



Stage 2, 2025

Parent Information Pack

RESPECT. RESILIENCE. RESPONSIBILITY
for self, for learning, for others and for the environment

Welcome to Stage 2 at Ryde Public School 2025

Dear Parents/Caregivers,

Welcome to the 2025 school year. Stage 2 teachers are looking forward to a wonderful year ahead. A strong partnership between home and school will help to provide the best possible education for your child. You can support your child by making sure they:

- attend school daily, arrive on time, ready to learn
- talk with you about something positive in their school day
- know you and the school are partners in their learning experience
- have crunch and sip (fresh fruit or vegetables), lunch, recess and water bottle with them each day
- wear their uniform, including a hat and sunscreen

We thank you for your support and look forward to meeting with you throughout 2025.

Stage 2 Teachers List and Information

Stage 2 Teachers, 2025			
Class	Grade	Teachers	Email
3B	3	Miss Rachel Batten	ryde-p.school@det.nsw.edu.au
3K	3	Miss Shivani Kumar	
3/4P	3/4	Mr Akshay Partha	
4T	4	Miss Brooke Tierney	
4R	4	Mr Russo (Stage 2 Assistant Principal)	
Community Language	K - 6	Miss Yingna Ke	
RFF	Stage 2	Ms Emma Thomson	

Bell Times		
Start of school	8:55 am	<p>Students may arrive from 8:30 am, walk straight to Area 5 (basketball/netball courts) until the bell rings. There is no teacher supervision before 8:30 am.</p> <ul style="list-style-type: none"> If your child arrives later than 8:55 am, they must go to the office and get a late note. All students are required to be in their classrooms by 8:55am.
Lunch	11:00 am – 11:10 am 11:10 am – 11:50 am	<p>Eating time in classroom</p> <p>Playtime in the playground</p>
Recess	1:50 pm – 2:20 pm	Playtime in the playground
Home time	2:55 pm - 3:00 pm	<p>Stage 2 parents can meet students in Area 5 (courts area). Please ensure your child knows their after-school arrangements and inform your teacher if there are any changes throughout the year (ie: After-school care, kiss and ride).</p> <p>Students will be taken to the office after 3.15 pm if not yet collected.</p>

Attendance – Absence notes, late arrivals and early departures

If a student is:

Late to school – Students **must** get a late arrival note from the office (arrival after 8:55 am). This can be

- a note signed by the parent/carer explaining the reason for being late.
- a parent/carer being present to provide a reason to the office when arriving late at school.
- an email from a parent/carer prior to the day, if the late arrival is expected. For example, a medical appointment

Please be aware that lateness is recorded as a partial absence from school. Reasons for being late are submitted via the Sentral Parent Portal.

- **Leaving early from school** – Must get a leave note from the office before picking the student up.
- **Absent from school** – Written documentation (Email, note or via the Sentral Parent Portal) must be submitted to the teacher.

School rolls are legal documents so any leave that students have requires written documentation (email, note or Sentral Parent Portal) even if you have notified the school by phone or told the classroom teacher personally.



General Timetable - Stage 2

Term 1	Monday	Tuesday	Wednesday	Thursday	Friday
Library <i>Bring library bags and books.</i>	3B 4R 4T 3/4P				3K
Sport <i>Wear your full sports uniform and hat.</i>			All Stage 2		All Stage 2 (Sport & PSSA)

Stage 2 Class Equipment List

Students <u>SUGGESTED</u> learning items: <ul style="list-style-type: none"> - Please label all your child's essentials. 	<ul style="list-style-type: none"> ● Suitable old shirt for painting or paint smock ● Library bag (Bring on library days) ● Headphones (To minimise the sharing of class sets, please ensure names are clearly labelled on the headphones)
--	---

Key Learning Area	Stage 2 Learning Overview Content/Information - This is a general outline.
English Term 1 – 4	<ul style="list-style-type: none"> ● Oral language and communication ● Vocabulary ● Reading comprehension ● Creating written texts ● Spelling ● Handwriting and digital transcription ● Understanding and responding to literature
Mathematics Term 1 – 4	Number and algebra <ul style="list-style-type: none"> ● Represents numbers ● Additive relations ● Multiplication relations

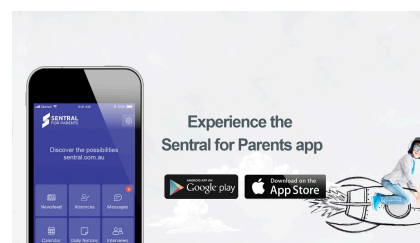
	<ul style="list-style-type: none"> Representing quantity fractions <p>Measurement and space</p> <ul style="list-style-type: none"> Geometric measure 2D spatial structure 3D spatial structure Non-spatial measure <p>Statistics and probability</p> <ul style="list-style-type: none"> Data Chance <p> Quick-Curriculum-Guide-for-Parents-and-Teachers-Year-3.pdf</p> <p> Quick-Curriculum-Guide-for-Parents-and-Teachers-Year-4.pdf</p>	
Science & Digital Technologies Term 1 - 4	Term 1: Material World Term 2: Living World Term 3: Physical world Term 4: Earth and space	
HSIE	<p>Geography</p> <ul style="list-style-type: none"> Term 1 & 2: Places are Similar and Different 	<p>History</p> <ul style="list-style-type: none"> Term 3 & 4: First Contact
PDHPE	<p><u>Personal Development and Health (PDH):</u> <u>Information and Overview for Parents and Carers</u></p> <p>Term 1: Weeks 1 - 4: Road Safety Program Term 1: Weeks 4 - 10: How can we include others and build respectful relationships? How can I be an advocate for my own and others' health and wellbeing? Term 2: My right to be safe? Term 3: What are the changes happening in my world and how can I manage them? Term 4: How do our decisions keep people safe?</p> <p><u>Physical Education (PE):</u> Weekly class/stage sport (Focus on the Fundamental Movement Skills) and additional physical activity (dance, fitness)</p> <p>Term 1: How does my culture influence the games I play? Term 2: How can I use tactics to be successful in territory games? Term 3: How does physical activity support positive health and wellbeing? Term 4: How can I develop a wide range of skills while moving?</p> <p>PSSA Summer (Terms 1 & 4) - Newcombe ball, Cricket & T-Ball PSSA Winter (Terms 2 & 3) - Soccer & Netball</p>	

Creative and Performing Arts	Visual Arts	Dance
	Music	Drama
Significant Dates, Excursions/ Incursions & other important events	Stage 2, Term 1 - Excursion (Science: Field of Mars)	Stage 2, Term 2 - Incursion (Geography: Ranger Jaime)
	Stage 2, Term 3 - Excursion (August 13th)	Stage 2, Term 4 - Incursion
*Changes may occur to these activities	PSSA - Sports and procedures (Summer teams have been selected and notes have been sent through email)	Swimming Meet - Information and abilities (Must be able to swim 50m without stopping)
	NAPLAN 12-24th March (Year 3 & 5 students) Writing, reading, conventions of language (spelling, grammar and punctuation) and numeracy	Check In assessments Term 3 Weeks 6-9 (25th August to 19th September)
	Opportunity Class 2026 (for Year 4 students) Opportunity classes— Year 5 entry in 2026 Opportunity Class Placement Test: 2 - 4 May 2025 Applications opened: 7 November 2024 Applications close: 21 February 2025	

Additional Information

Sentral Parent Portal

Please download the Sentral Parent Portal app on your device for regular school updates. If you require assistance, please do not hesitate to contact the office: ryde-p.school@det.nsw.edu.au



Change of Information

If your details have changed e.g. address, phone, emergency contact details etc. please notify the school immediately in case of emergency.

Medication

All medication must be labelled with your child's name and in its original container. Medication must be submitted to the office, this includes puffers for asthma and epipens. If your child is sick and medication needs to be taken during school time, please see the office staff. A separate note must be filled in for regular medication.

Birthdays/party bags/end-of-year gifts to students

Students may bring party bags for their peers. **Party bags must not include any food items** (ie: chocolates, lollies, jellies, chips etc). **All food items will be returned to families.** Party bags with no food items will be distributed at

the end of the day. Students are taught to open their party bags after seeking permission from their parents/carers.

Mobile phones and SMART watches

Your child is responsible for their mobile phone and/or SMART watch. All communication devices, including mobile phones and SMART watches, are required to be switched off during school hours from 8:55 am - 3:00 pm. Students are asked to put their devices in their bags, teachers are unable to supervise the safe keeping of these personal items.

- The Department of Education's policy on communication devices is: 1.3 Primary school students must not use digital devices during class, at recess and lunch unless approved by a principal or teacher. Exemptions may be granted by a principal or teacher, including allowing students to use a device for an educational purpose, or as part of a reasonable adjustment for student learning and wellbeing. More information can be found at: <https://education.nsw.gov.au/policy-library/policies/pd-2020-0471>

Permission to publish

At your child's enrolment, parents and carers have selected their decisions on 'permission to publish'. Students who do not have 'permission to publish' will not be published in any photos, videos or additional footage created by the school. This includes posts on Seesaw, the Community inFocus and the school website. Your child's classroom teacher may contact you to check whether you give permission to publish or not. If you would like to change your decisions on your child's permission to publish, please contact your classroom teacher.

Hats and water bottles

- Students should bring their hats and water bottles to school every day.
- No hat = Students must stay under the COLA and play in the shade.
- No hat on sports day = Cannot participate in uncovered sports activities.

Please do not send glass water bottles as it becomes a hazard when dropped.



Crunch and Sip

A piece of fresh fruit or vegetable for students to snack on during the day. You may wish to cut up the fruit and vegetables for your child if they are missing any teeth or find it difficult to bite into their snack. It cannot be 'fruit juice', 'fruit yoghurt' or 'fruit lollies'. Crunch&Sip® is a set time in primary schools for students to 'refuel' on vegetables, salad and fruit and 'rehydrate' with water. Students who are not hungry and are well-hydrated perform better in the classroom, show increased concentration, and are less likely to be irritable and disruptive.



Personal belongings at school

If your child brings personal belongings to school, it is your child's responsibility to look after their items. This includes toys, books, jewellery, stationery, devices, etc. Staff are not permitted to look after your child's personal belongings. We encourage students to keep valuables at home.

Homework

Please refer to the homework policy on the [Ryde Public School Website](#)

Homework for students in Years 3 to 6 will be varied and students will be expected to work more independently. In Stage 2, we encourage students to regularly read and write at home.

There may be varied emphasis during the year.

- **Daily Reading:** Quality home reading may include borrowed library books or texts selected from the Premier's Reading Challenge.
- **Daily Spelling:** Premier's Spelling Bee: Spelling lists provided to students to participate in the challenge
- **Speaking:** Public speaking tasks such as the Multicultural Perspectives Speaking Competition and projects related to in-class learning.
- **Premier's Sporting Challenge**
- **Premier's Reading Challenge** <https://online.det.nsw.edu.au/prc/home.html>

Communication

If you have any questions or concerns, your teachers are always happy to discuss matters with you. Please be advised that staff may take up to 3 working days to respond. At pick-up time in the afternoon, staff are on duty and are required to supervise the safe dismissal of all students. Staff are unable to have one-to-one discussions during this time, please request an appointment via email to organise an appropriate time to meet.

CONCERN	APPROPRIATE ACTION
General Enquiries	<ul style="list-style-type: none"> ● Contact school office via email (<i>ryde-p.school@det.nsw.edu.au</i>) or phone call (02 9809 3181) ie: Change of address, contact details, student medical details, questions on enrolment or finances etc
Late or Early Leavers on a school day	<ul style="list-style-type: none"> ● Sign in or out via the school office – do not take students directly to or from the classroom ● On special days/carnivals etc, students may be signed out via the classroom or supervising teacher - this is event-specific. You will be informed if students may be signed out early.
The academic progress, well-being or general enquiries of your child	<ul style="list-style-type: none"> ● Contact your child's classroom teacher via email. (<i>ryde-p.school@det.nsw.edu.au</i>) ● Contact the school office via email if you are uncertain of who to speak with.
Student absences	<ul style="list-style-type: none"> ● Advise via Sentral Parent Portal, email or send a written note when the student returns, explaining the reason for absence, dates of absence

Extended Leave or Travel Extended illness	<ul style="list-style-type: none"> • For extended illness contact the teacher via the school office and advise of the estimated date of return. Medical certificates will be required. • Application for Extended / Leave form (available from the office) completed and returned with a copy of travel itinerary and tickets.
---	--

Dismissal Areas

Please see a picture of dismissal areas in the infographic.

Alternatively, please click here for the full image: [PDF Ryde Public School Map Infographic 1st day back.pdf](#)

Stage 2 students get picked up in the **court area**.

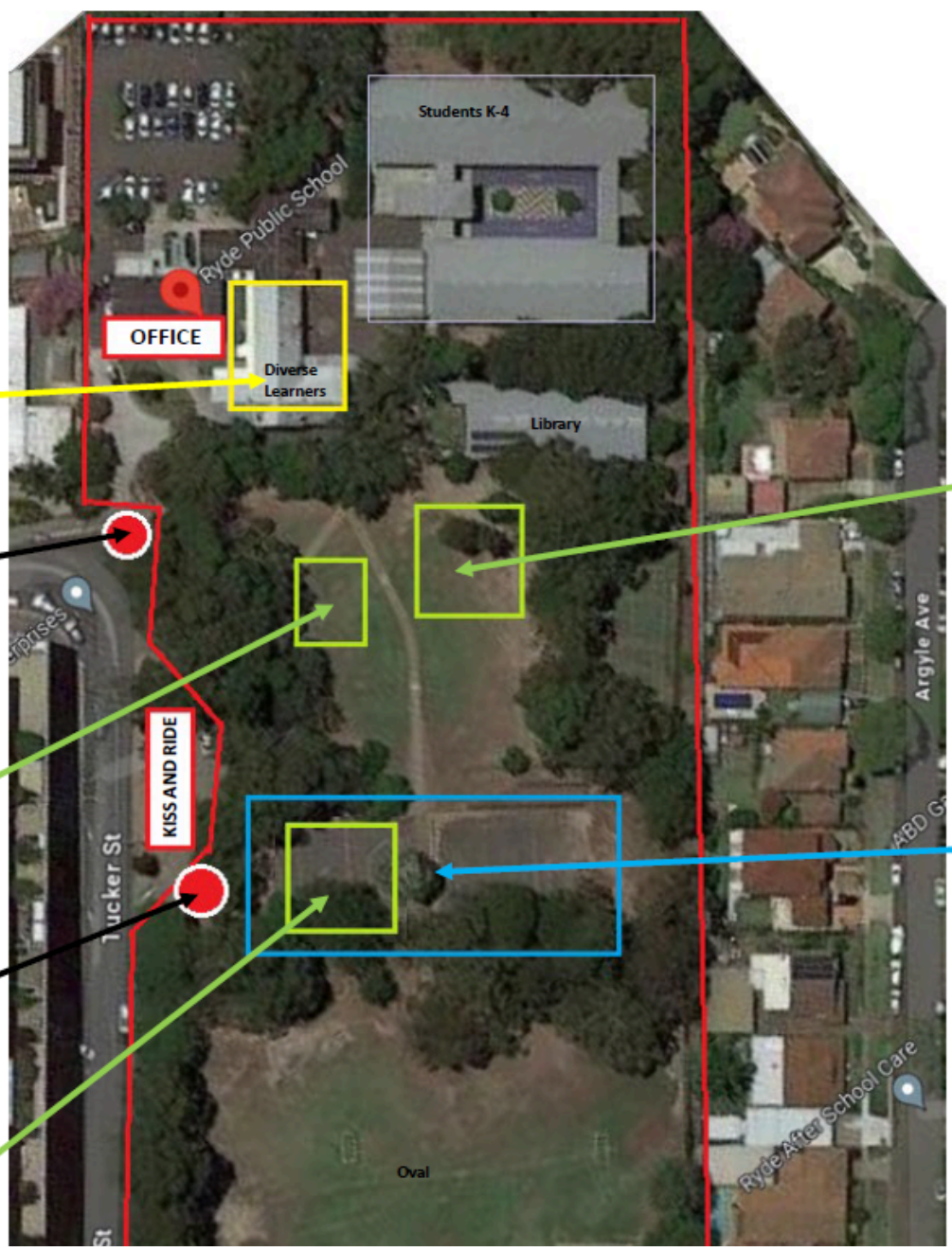
Diverse Learners:
Students in the Diverse Learners are dropped off and picked up in the Diverse Learners area.

Main Pope Street Gate (Closest to school office). This is the only entrance throughout the day.

After-school pick-up area: Kindergarten
Teachers wait here until 3:10pm.

Kiss and Ride, Pope /Tucker Street Gate (Closest to where students K-4 line up in the morning)

After-school dismissal area: Stage 2 (Years 3-4)



After-school pick-up area: Stage 1 (Years 1-2). Teachers wait here until 3:10pm.

Morning: Students in Kindergarten and Years 1 – 4 wait here until the bell rings (8:50am). Supervision from 8:30am.

Afternoon: Students who use the Kiss and Ride walk here after school to get picked up at the Kiss and Ride gate.