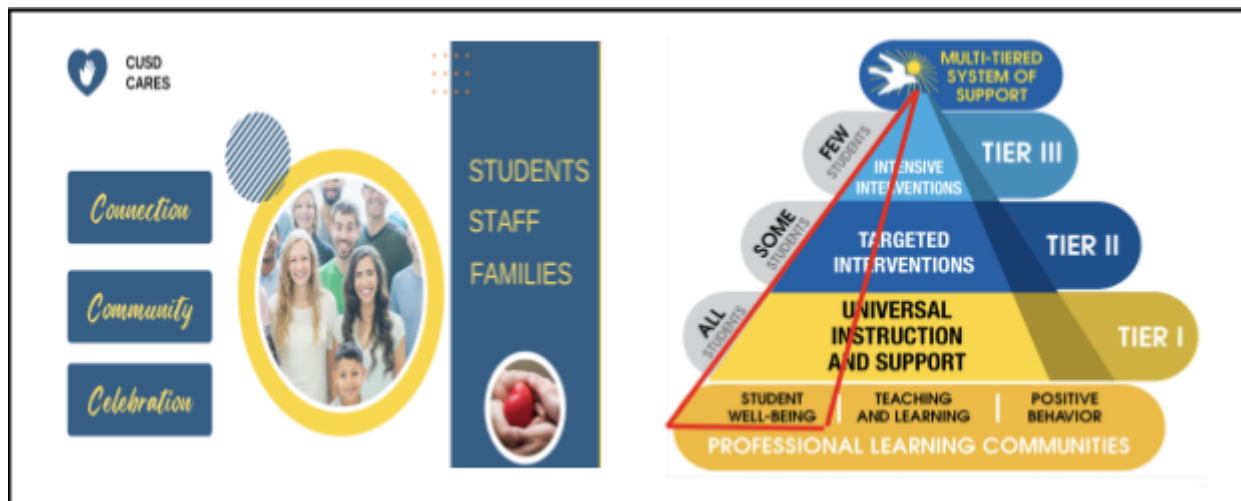
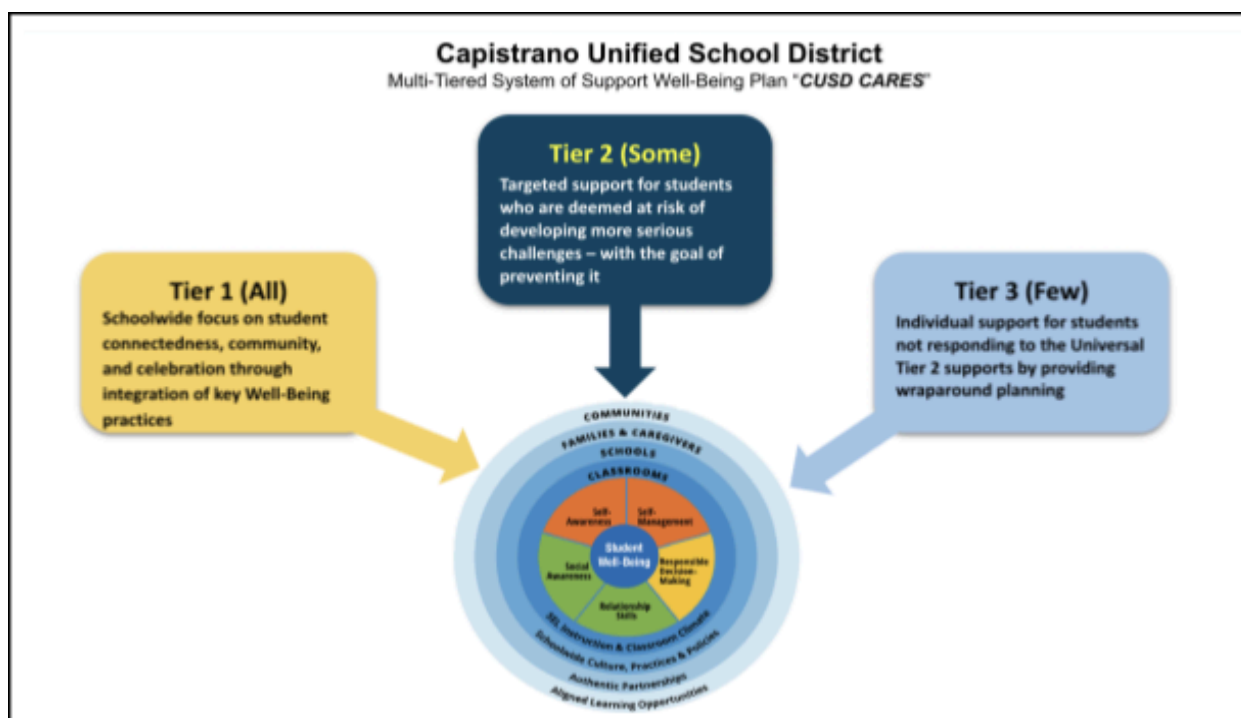


CUSD CARES (Aliso Viejo MS)

Multi-tiered System of Support (MTSS): Well-Being



Purpose



Tier 1 - Universal (All Students): Schoolwide focus on student connectedness, community, and celebration through integration of key "Well-Being" practices:

- Weekly "Well-being Check-In"
- Middle school intramural sports and activities during school day
- Staff training (WPC and Orange County Department of Education)
- "You Belong Here" attendance campaign
- Increased opportunities for middle students to take CCA courses that align with their interests
- Five Star system for encouraging student participation in activities
- Counselor support through Second Step and Cultural Proficiency Lessons
- Positive Behavior Support Tier 1 Strategies and Interventions

CUSD Cares (**Aliso Viejo MS**)

Multi-tiered System of Support (MTSS): Well-Being

- Aliso Viejo MS examples: ([LINK to District Sample Form](#))
 - Principal greets students and parents at the front of the school
 - Assistant Principal greets students at the bike rack at the beginning of school
 - No Place for Hate (Pledge and three activities)
 - Positive phone calls home

Tier 2 - Targeted (Some Students): Targeted support for students who are at risk of developing more significant challenges

- **Wellness Rooms**
- **Staff Mentor (HUG)**
- Targeted group counseling (Counselors & Intervention Specialists)
- Referral to counselor
- Restorative Practices
- Wellness and Prevention Center counseling at specific school sites
- Positive Behavior Support Tier 2 strategies and interventions
- Aliso Viejo MS examples:
 - *Daily check-ins with mentor (HUG)*
 - *Group discussions (Counselor)*
 - *Student-Family-Site collaboration*

Tier 3 - Intensive: Individual and intentional support for students not responding to the Tier 2 supports by providing comprehensive planning and services

- **Individual 1:1 Counseling**
- **District Support Team (counselors, psychologists, High School Family Lead Administrators, and District Staff)**
- County and outside mental health referral (with parent consent)
- Partnership with family, health provider, and school site team
- Aliso Viejo MS examples:
 - *Frequent, calendared Individual meetings with mentor, counselor, or administrator*
 - *Home visits*
 - *Individual discussions (Counselor)*
 - *Student-Family-Site-District collaboration*