

**PRODUCT DESCRIPTION AND INTENDED USE**

**PRODUCT CATEGORY: Cooked Cured Sausages**

**NAME: Kabana**

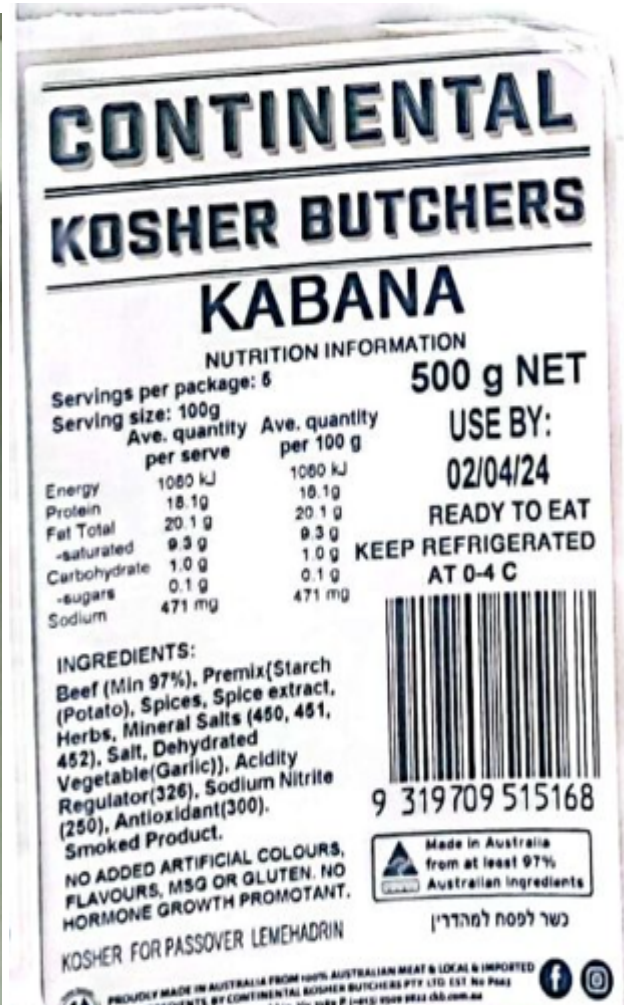
<b>COMPOSITION</b>	<b>NON - PASSOVER:(In-House)</b> Beef (min 96%),Potato Starch, Salt, Mineral Salts (450, 451, 452), Spices & Spice Extract (Mace, Caraway, Paprika,Cayenne, Nutmeg), Acidity regulator (326), Antioxidant (316), Herb, Vegetable Powder [ <b>Garlic (0.09%)</b> ], Sodium Nitrite (250). ,																				
	<b>PASSOVER:(In-House)</b> Beef (min 96%), PremixStarch (Potato), Mineral Salts (450, 451, 452), Salt, Spices & Spice Extract (Mace, Caraway, Paprika, Cayenne, Nutmeg), Vegetable Powder [Garlic (4%)], Antioxidant (316), Herb (Oregano)}, Acidity Regulator (326), Sodium Nitrite (250), Antioxidant (300). <b>Smoked product</b>																				
<b>STATEMENTS</b>	<b>NO ADDED ARTIFICIAL COLOUR, FLAVOURS, MSG OR GLUTEN.</b> <b>NO HORMONE GROWTH PROMOTANT.</b>																				
<b>SAFETY &amp; REGULATORY CRITERIA</b>	Sausage must contain: (a) No less than 500g/kg of fat free meat flesh; and (b) The proportion of fat in sausage must be no more than 500g/ kg of the fat free meat flesh content.( <a href="#">Food Standard 2.2.1</a> ).  Food Safety assured through the application of HACCP principles and GMP																				
<b>REGULATORY LIMITS</b>	Must not contain more than 125 mg/ kg nitrite total. ( <a href="#">FSC 1.3.1, Schedule 15, Section 8.2.2.</a> )  <b>Microbiological limits: (<a href="#">FSC 1.6.1 Schedule 27, Section 4</a>)</b> <table border="1" data-bbox="470 1057 1380 1288"> <thead> <tr> <th></th> <th>Number of samples (n)</th> <th>Number of samples (c) allowed to be &gt;m but &lt;M</th> <th>Limit (m)</th> <th>Maximum (M)</th> </tr> </thead> <tbody> <tr> <td>Coagulase-positive staphylococci</td> <td>5</td> <td>1</td> <td>100*</td> <td>1,000*</td> </tr> <tr> <td>Products in which growth of L. monocytogenes can occur</td> <td>5</td> <td>0</td> <td>0**</td> <td></td> </tr> <tr> <td>Salmonella</td> <td>5</td> <td>0</td> <td>0**</td> <td></td> </tr> </tbody> </table> * Count per gram of product ** Not detected in 25g samples		Number of samples (n)	Number of samples (c) allowed to be >m but <M	Limit (m)	Maximum (M)	Coagulase-positive staphylococci	5	1	100*	1,000*	Products in which growth of L. monocytogenes can occur	5	0	0**		Salmonella	5	0	0**	
	Number of samples (n)	Number of samples (c) allowed to be >m but <M	Limit (m)	Maximum (M)																	
Coagulase-positive staphylococci	5	1	100*	1,000*																	
Products in which growth of L. monocytogenes can occur	5	0	0**																		
Salmonella	5	0	0**																		
<b>MEAT &amp; FAT CONTENT</b>	Fat content of meat as per mixture of Red Meat, with 80-85% Visual Lean and Beef Fat (tallow) with 0% V.L  For NIP purposes: Raw beef supplied at wholesale level with a total fat content of 20% (The food composition database, FSANZ) and Beef tallow with 0% V.L (USDA Nutrient Database)																				
<b>QUALITY CRITERIA</b>	a) Koshering staff to ensure that all excess salt is removed from meat trim after the koshering process. This is a visual assessment. (b) Packing staff to ensure that all casing is intact, without breakages.																				
<b>CASING SIZE</b>	30mm, Edible Beef Collagen Casing																				
<b>METHOD OF PRESERVATION</b>	Chilling or/and Freezing, Vacuum Packaging, Preservative (250)																				
<b>PACKAGING - PRIMARY</b>	<b>Whole, variable weight, ≈ 230-260g/stick</b> (Wholesale, not vacuum packed). Meat bag, bag size: 460mm X 840mm <b>Whole, fixed weight 500g,</b> Golden Vacuum Pouch. Pouch size: 185 X 290mm																				
<b>TARE</b>	<b>Meat bag -16g</b>																				
<b>PACKAGING SECONDARY</b>	Carton/Printed H/D carton.																				
<b>STORAGE CONDITIONS</b>	Store in the chiller at 0°C – 4 °C, or freezer at –18 °C or lower.																				
<b>SHELF LIFE</b>	<b>Use within 28 days</b> if stored vacuum packed at 0–4°C (refrigerated). <b>Use within 6 months</b> if stored vacuum packed at –18°C or below (hard frozen). <b>Once opened (chub product):</b> Keep refrigerated at or below 4°C and consume within 5 days.																				
<b>DISTRIBUTION METHOD</b>	Delivered at not more than 5° C (chilled) and at -18°C (frozen) in clean, new containers.																				

<b>INTENDED CONSUMER /SPECIAL LABELLING</b>	Intended for general consumption.
<b>INTENDED USE/FINAL CUSTOMER PREPARATION</b>	READY TO EAT. For frozen products, to be thawed before consumption.

Continental Kosher Butchers Pty Ltd authorization

Signature: *[Signature]* Printed Name: LARISA ULIANITSKY  
Title: QAM Date: 20 March 2025

\*LABEL



**CONTINENTAL  
KOSHER BUTCHERS**

**KABANA**

**NUTRITION INFORMATION**

Servings per package: 5  
Serving size: Approx. 100 g

	Ave. quantity per serve	Ave. quantity per 100 g
Energy	1080 kJ	1080 kJ
Protein	18.1g	18.1g
Fat Total	20.1 g	20.1 g
-saturated	9.3 g	9.3 g
Carbohydrate	1.0 g	1.0 g
-sugars	0.1 g	0.1 g
Sodium	471 mg	471 mg

**500 g NET**  
**USE BY:**  
**06/09/24**

**KEEP FROZEN**  
**AT -18 C**

Thaw thoroughly in refrigerator.  
This product does not require further cooking

**INGREDIENTS:**

Beef (Min 97%), Premix(Starch (Potato), Spices, Spice extract, Herbs, Mineral Salts (450, 451, 452), Salt, Dehydrated Vegetable(Garlic)), Acidity Regulator(326), Sodium Nitrite (250), Antioxidant(300). Naturally Smoked Product.

NO ADDED ARTIFICIAL COLOURS, FLAVOURS, MSG OR GLUTEN. NO HORMONE GROWTH PROMOTANT.

KOSHER FOR PASSOVER LEMEHADRIN

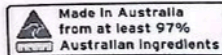
כשר לפסח למהדרין



PROUDLY MADE IN AUSTRALIA FROM 100% AUSTRALIAN MEAT & LOCAL & IMPORTED INGREDIENTS. BY CONTINENTAL KOSHER BUTCHERS PTY. LTD. EST. No P663 10 Powell St, Moorabbin, Vic 3189 P (+613) 9509 9822 ckb.com.au



9 319709 515168



Made In Australia from at least 97% Australian ingredients

**CONTINENTAL  
KOSHER BUTCHERS**

**KABANA**

**NUTRITION INFORMATION**

Servings per package: 6  
Serving size: 100g

	Ave. quantity per serving	Ave. quantity per 100 g
Energy	1080 kJ	1080 kJ
Protein	18.1g	18.1g
Fat Total	20.1 g	20.1 g
-saturated	9.3 g	9.3 g
Carbohydrate	1.0g	1.0g
-sugars	0.1 g	0.1 g
Sodium	471 mg	471 mg

**500g NET**  
**USE BY:**  
**24/11/24**

Thaw thoroughly in refrigerator. This product does not require further cooking.

**KEEP FROZEN**  
**AT -18 C**

**INGREDIENTS:**

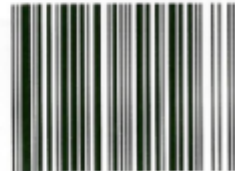
Beef (Min 97%), Potato Starch, Salt, Mineral Salts (450,451,452), Spices and Spice Extract, Acidity Regulator (326), Antioxidant (316), Herb, Dehydrated Vegetable (Garlic), Sodium Nitrite (250). Naturally smoked product.

NO ADDED ARTIFICIAL COLOURS, FLAVOURS, MSG OR GLUTEN. NO HORMONE GROWTH PROMOTANT.

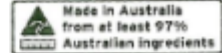
KOSHER LEMEHADRIN כשר למהדרין



PROUDLY MADE IN AUSTRALIA FROM 100% AUSTRALIAN MEAT & LOCAL & IMPORTED INGREDIENTS. BY CONTINENTAL KOSHER BUTCHERS PTY. LTD. EST. No P663 10 Powell St, Moorabbin, Vic 3189 P (+613) 9509 9822 ckb.com.au



9 319709 515168



Made in Australia from at least 97% Australian ingredients

# CONTINENTAL KOSHER BUTCHERS

## KABANA

### NUTRITION INFORMATION

Servings per package: 10 per kg

Serving size: 100g

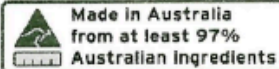
	Ave. quantity per serving	Ave. quantity per 100 g
Energy	1080 kJ	1080 kJ
Protein	18.1 g	18.1 g
Fat Total	20.1 g	20.1 g
-saturated	9.3 g	9.3 g
Carbohydrate	1.0g	1.0g
-sugars	0.1 g	0.1 g
Sodium	471 mg	471 mg

**READY TO EAT**

#### INGREDIENTS:

Beef (Min 92%), Premix (Potato Starch, Mineral Salts (450, 451, 452), Salt, Spices and Spice Extract, Garlic Powder, Antioxidant (316), Herb), Acidity Regulator (326), Salt, Sodium Nitrite (250). Naturally smoked product.

NO ADDED ARTIFICIAL COLOURS, FLAVOURS, MSG OR GLUTEN. NO HORMONE GROWTH PROMOTANT. MADE FROM NON-GM INGREDIENTS



כשר למהדרין KOSHER LEMEHADRIN



PROUDLY MADE IN AUSTRALIA FROM 100% AUSTRALIAN MEAT & LOCAL & IMPORTED INGREDIENTS. BY CONTINENTAL KOSHER BUTCHERS PTY. LTD. EST. No P663  
10 Powlett St. Moorabbin, Vic 3189 P. (+613) 9509 9822 ckb.com.au



# CONTINENTAL KOSHER BUTCHERS

## KABANA

### NUTRITION INFORMATION

Servings per package: 5

Serving size: Approx. 100 g

**500 g NET**

Ave. quantity per serving

	Ave. quantity per serving	Ave. quantity per 100 g
Energy	1080 kJ	1080 kJ
Protein	18.1 g	18.1 g
Fat Total	20.1 g	20.1 g
-saturated	9.3 g	9.3 g
Carbohydrate	1.0g	1.0g
-sugars	0.1 g	0.1 g
Sodium	471 mg	471 mg

**USE BY:**

**21/06/24**

**READY TO EAT**

**KEEP REFRIGERATED  
AT 0-4 C**

#### INGREDIENTS:

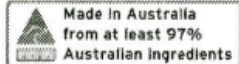
Beef (Min 97%), Potato Starch, Salt, Mineral Salts (450,451,452), Spices and Spice Extract, Acidity Regulator (326), Antioxidant (316), Herb, Dehydrated Vegetable (Garlic), Sodium Nitrite (250). Naturally smoked product.

NO ADDED ARTIFICIAL COLOURS, FLAVOURS, MSG OR GLUTEN. NO HORMONE GROWTH PROMOTANT.

כשר למהדרין KOSHER LEMEHADRIN



9 319709 515168



PROUDLY MADE IN AUSTRALIA FROM 100% AUSTRALIAN MEAT & LOCAL & IMPORTED INGREDIENTS. BY CONTINENTAL KOSHER BUTCHERS PTY. LTD. EST. No P663  
10 Powlett St. Moorabbin, Vic 3189 P. (+613) 9509 9822 ckb.com.au

