

Unit 1.2 Review

In which type of living things must groups of cells work together?

Why do cells in the same body look drastically different?

Do they have the same DNA?

What are enzymes? What do they do? How many are there in each cell?

What are the main differences between plant and animal cells?

Which organelles can be found in the cytoplasm and on the surface of the endoplasmic reticulum?

What are the four things that all living cells have?

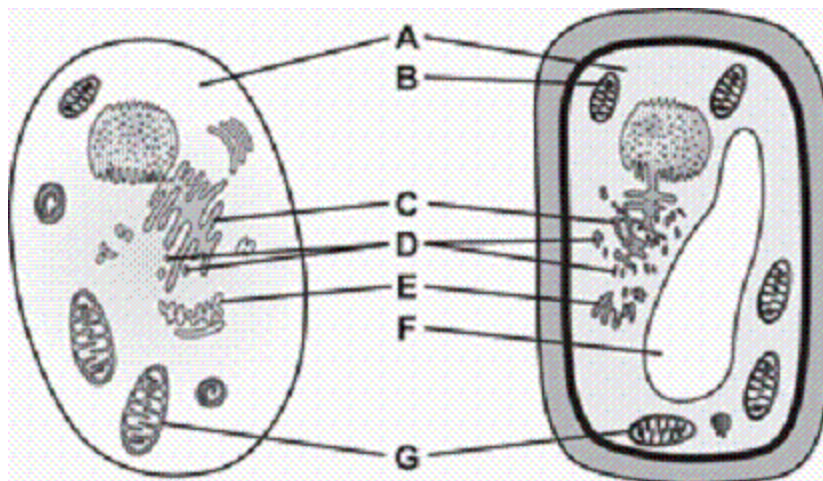
Specialized structures that work together inside a cell are called _____.

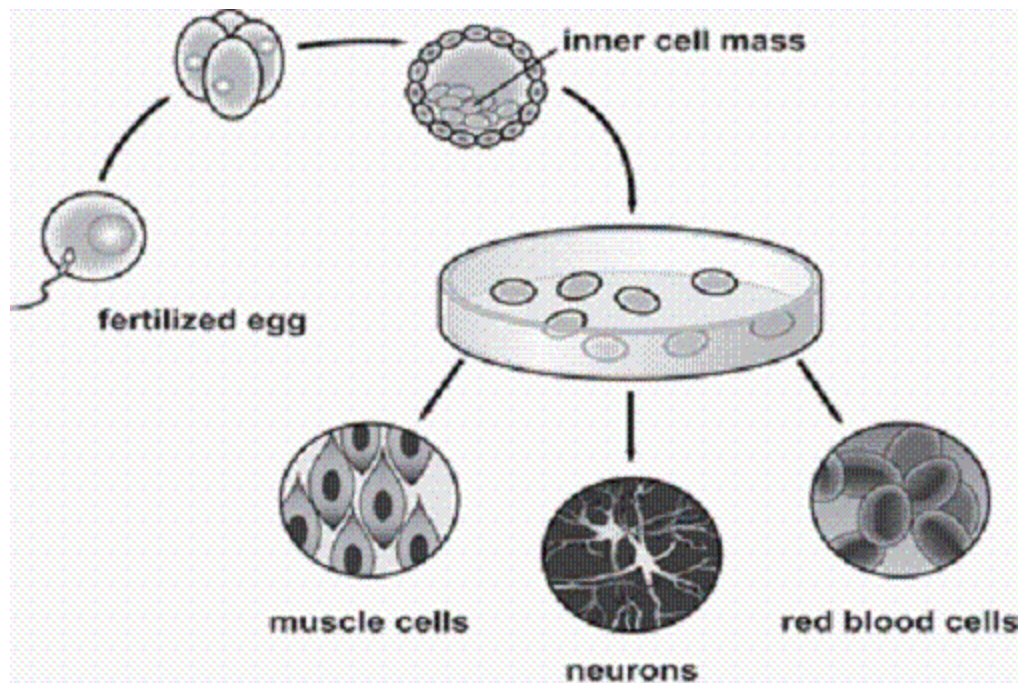
The movement of molecules down a concentration gradient through transport proteins in the cell membrane is a type of _____.

The cells in the human body need nutrients and other materials to stay alive. To be used by cells, the materials must be _____.

The specialized structures of different types of cells are related to the cell's _____.

What is cell differentiation and what does it do?





	ORGANS	FUNCTION
CIRCULATORY		
DIGESTIVE		
ENDOCRINE		
EXCRETORY		
IMMUNE		
INTEGUMENTARY		
MUSCULAR		
NERVOUS		
REPRODUCTIVE		
RESPIRATORY		
SKELETAL		