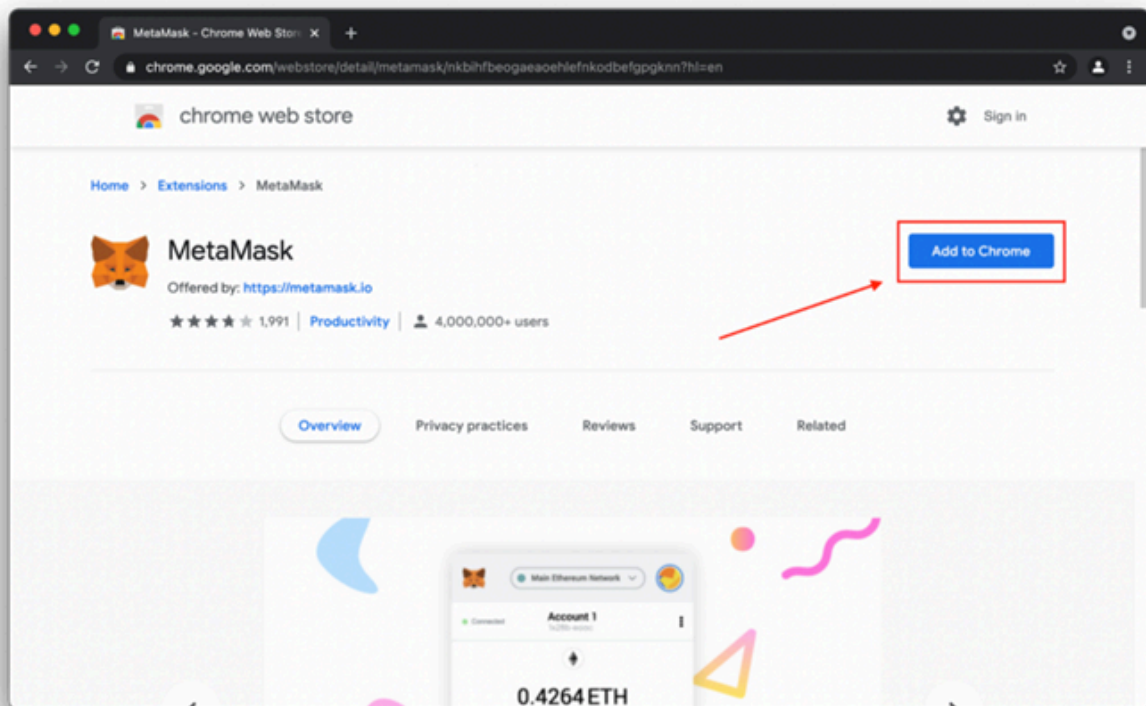


# AthenaDAO

## Step by Step guide for setting up a Metamask wallet

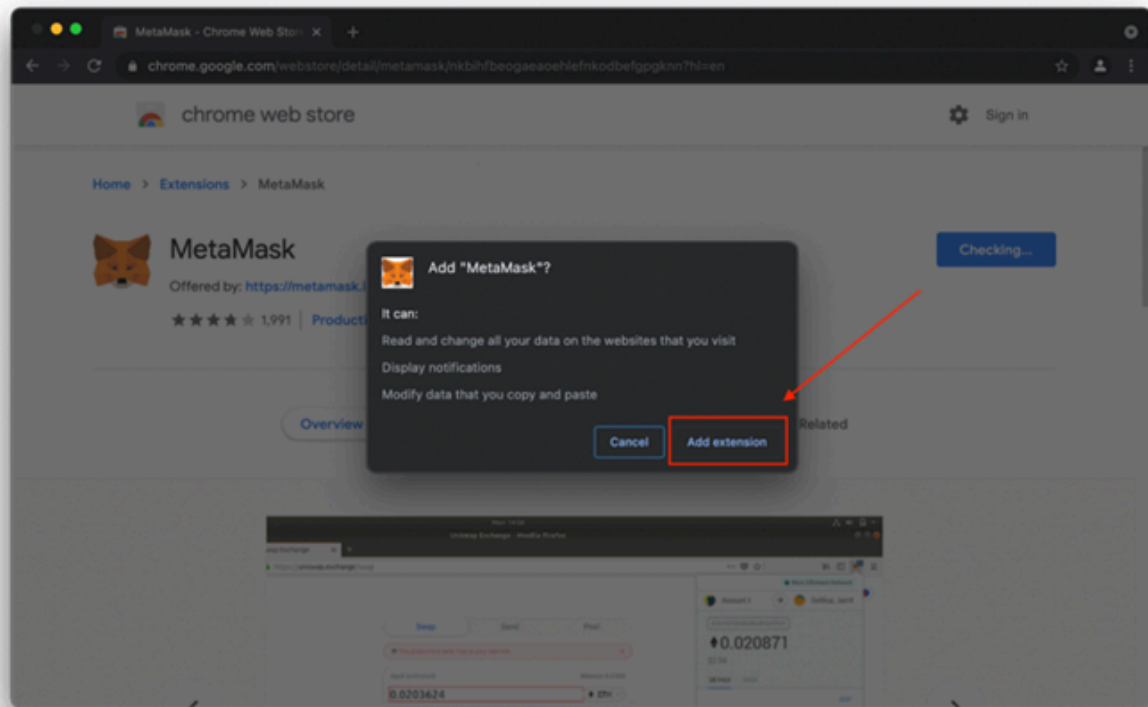
While there are many Ethereum wallet options, we recommend the following:

1. Install a Chromium-based browser, such as Chrome, Brave, Firefox or Edge.
2. Install the browser extension MetaMask, a reputable and easy-to-use Ethereum wallet.

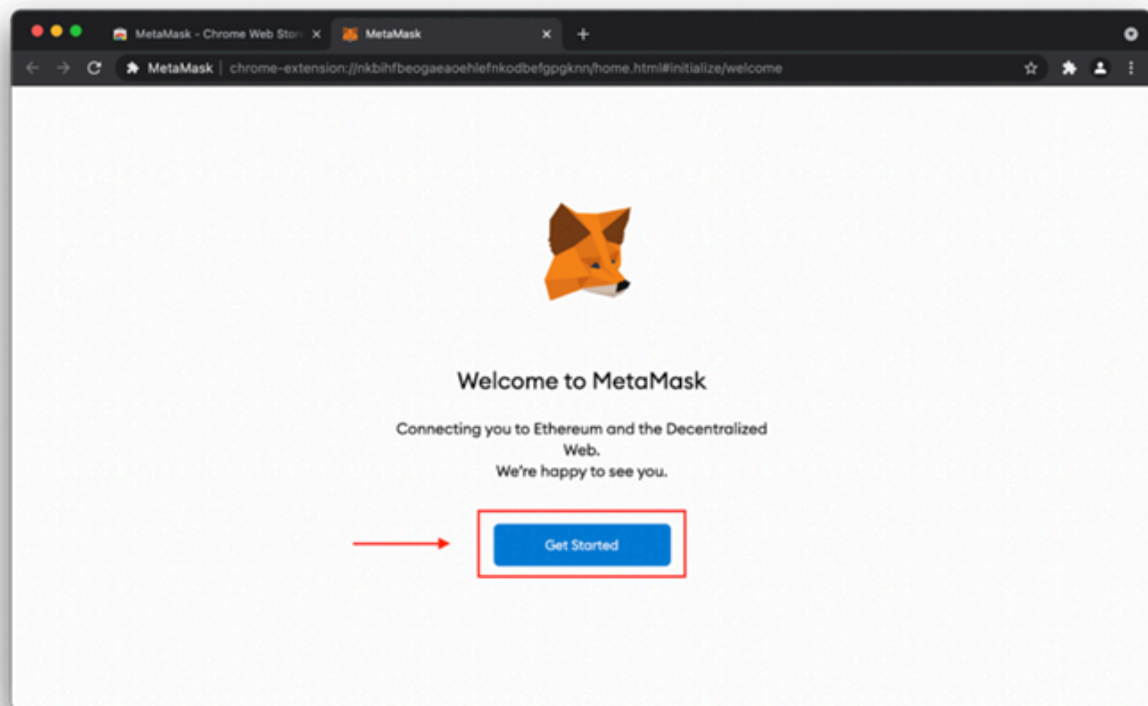


3. When prompted, allow the extension to be added to your browser.

# AthenaDAO

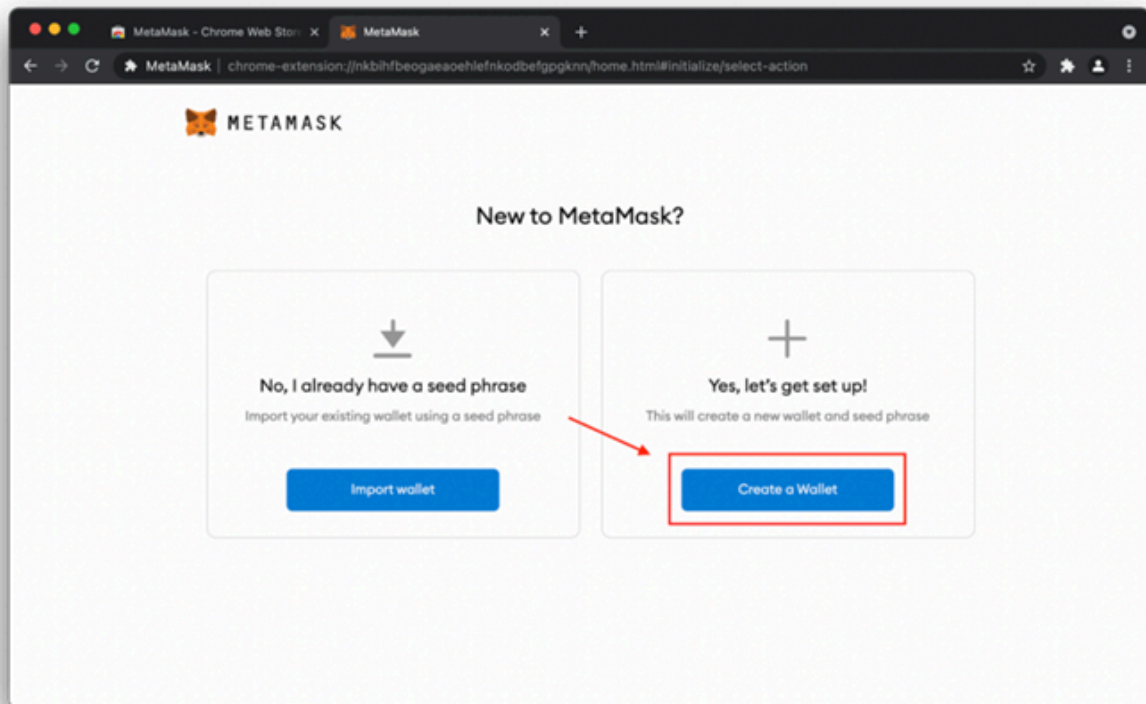


4. Click on “Get Started”.



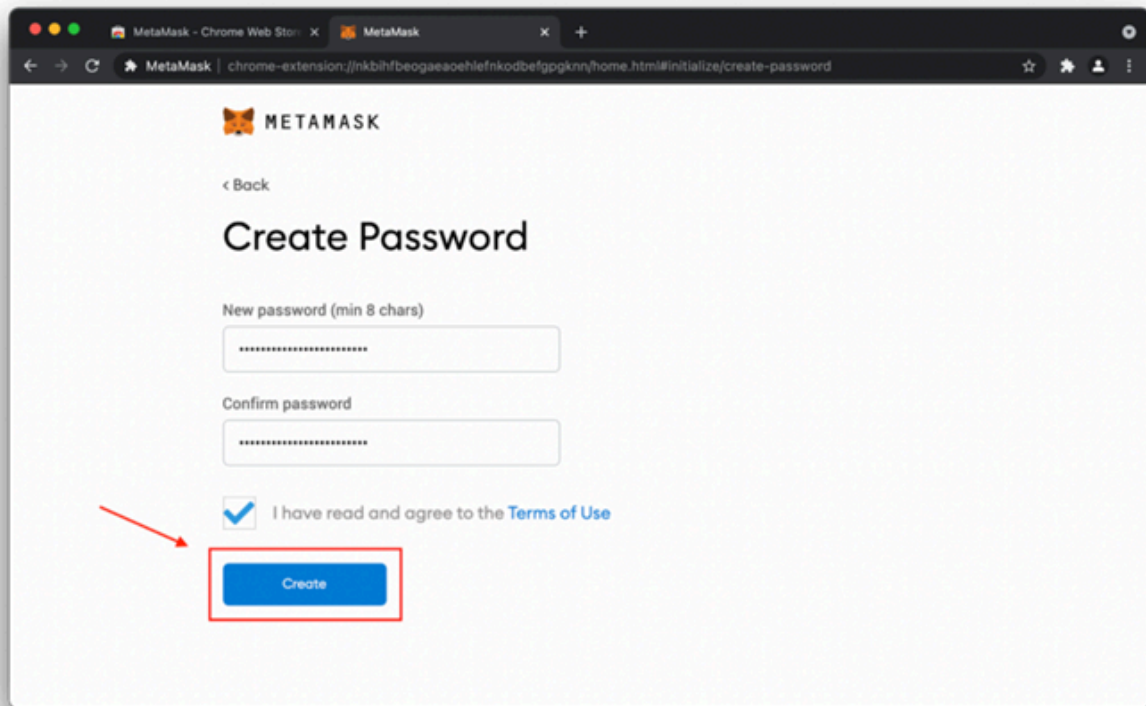
# AthenaDAO

5. Click on “Create a Wallet” and, on the next screen, choose whether you would like to provide MetaMask with optional analytical data.



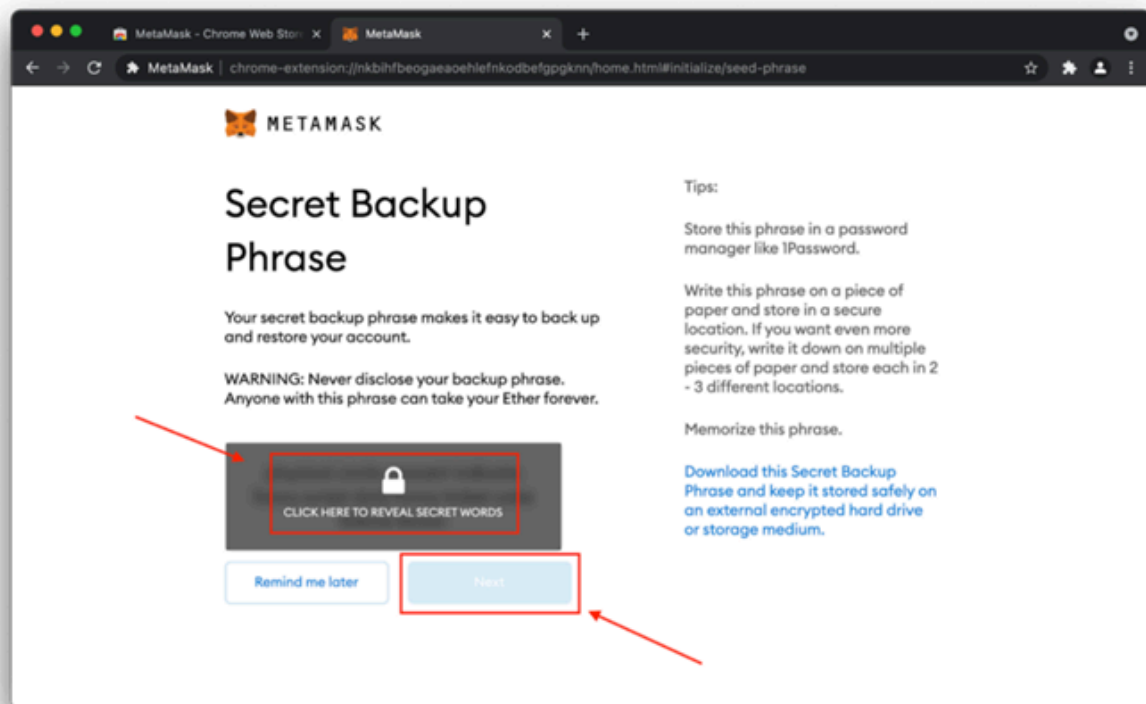
6. Choose a secure password and agree to the Terms of Use. In terms of password security, we recommend you think of your MetaMask wallet like a bank account. Make it a secure password and store it in a safe place, such as a password manager.

# AthenaDAO



7. **Very important:** Follow the instructions on your screen carefully in order to back up your “backup phrase”. This phrase, and only this phrase, guarantees you access to your Ethereum wallet. You must not disclose this phrase to others. If you lose this phrase, you cannot restore your account and lose your funds. Make sure you keep it safe.

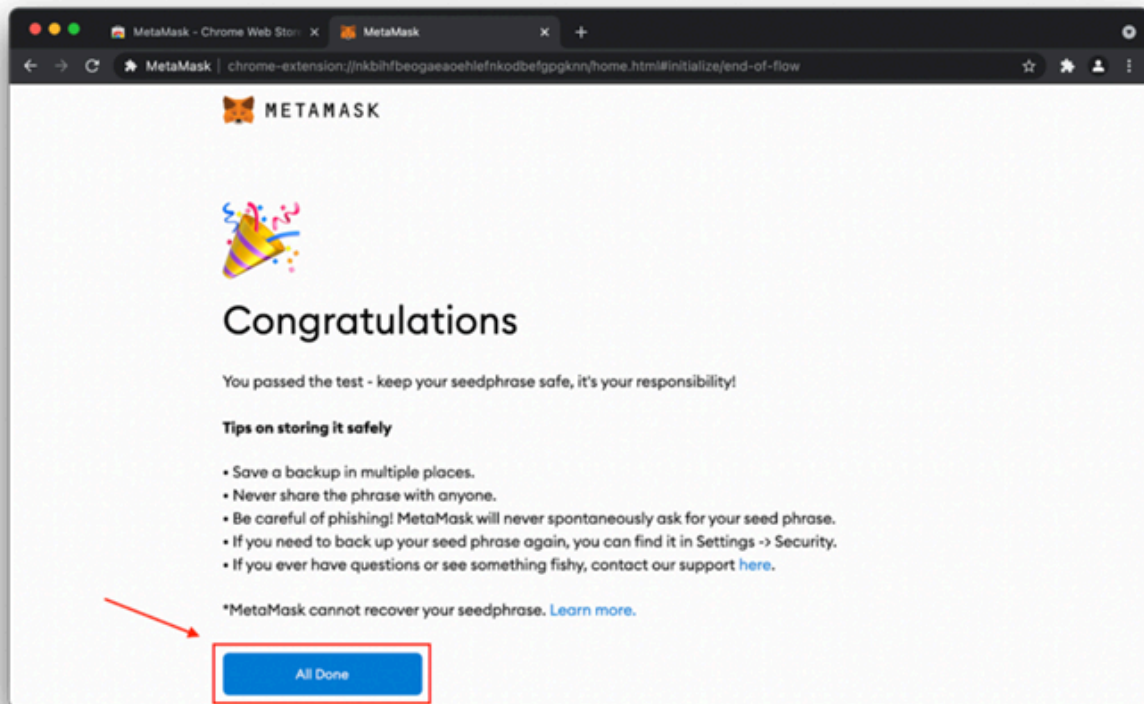
# AthenaDAO



8. Confirm your phrase and continue.
9. Now, if you see this screen, MetaMask is set up successfully.



# AthenaDAO



10. Dismiss the release notes and make yourself comfortable with the overview page of your newly created Ethereum wallet.

11. Finally, move your mouse cursor to the top where it says "Account 1", click left to copy your public Ethereum address. Sending this address to someone will allow them to send you tokens. Send it to us so we know where to send them!

# AthenaDAO

