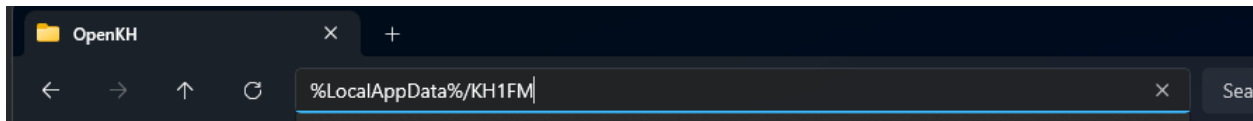


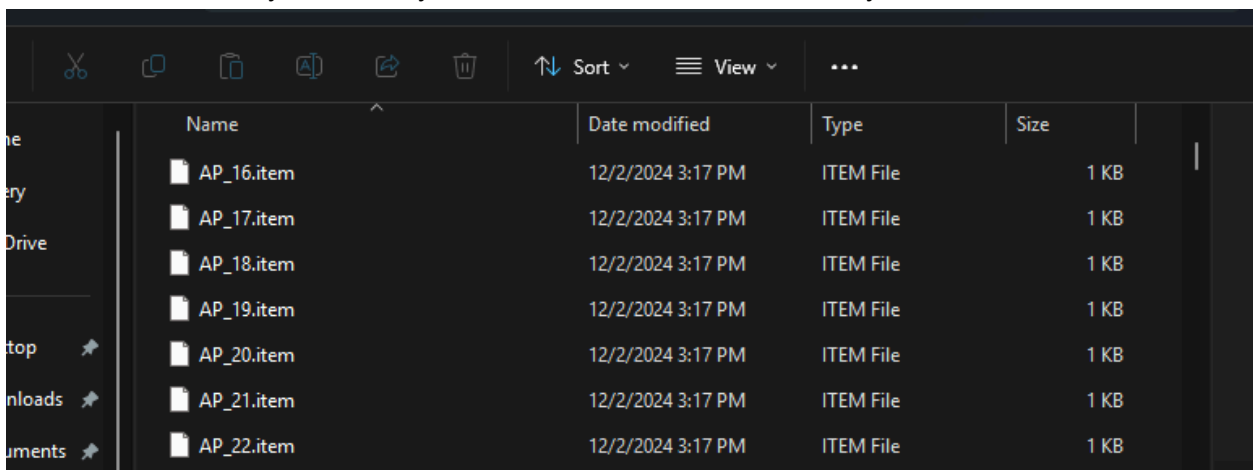
# KH1FM Archipelago Troubleshooting Guide

## My game is not sending/receiving checks.

Could be for a number of reasons. The game and client communicate by dropping/reading files in a defined game communication folder. This is usually found in your local app data folder. You can find it by typing “%LocalAppData%/KH1FM/” into your windows explorer directory bar.



While connected on your client, you should see files in this directory like so:



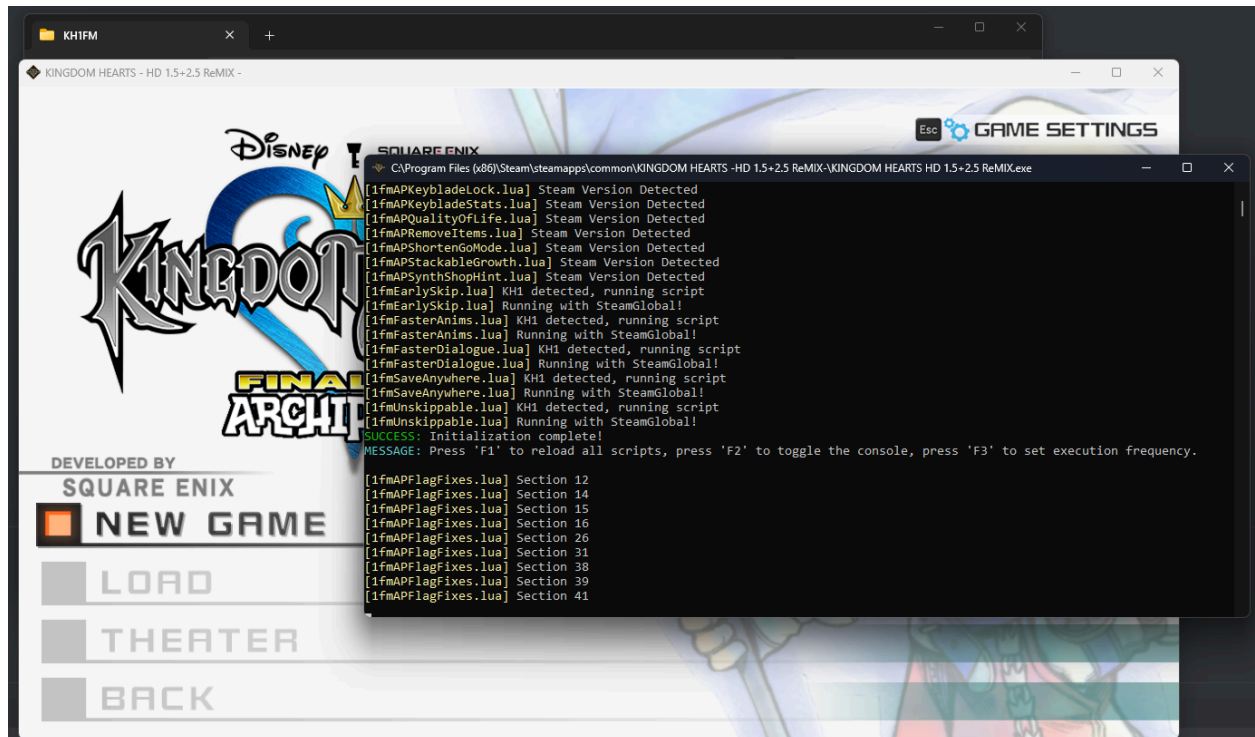
There are three types of files that can be found here:

- “.item” files. These are items that your client has sent your game
- “send” files. These are locations your game has checked.
- “.cfg” files. These are settings collected by your client from the server’s slot data associated with your slot that is communicated with the game.

If this folder does not exist, or there are no files inside the folder *while connected in the client* and playing, you can try:

- Close the game and client/launcher
- Reopen the launcher
- Open the client
- Connect to your server and type in your slot name
- Open the game
- Navigate back to “%LocalAppData%/KH1FM/” to see if files are being placed there

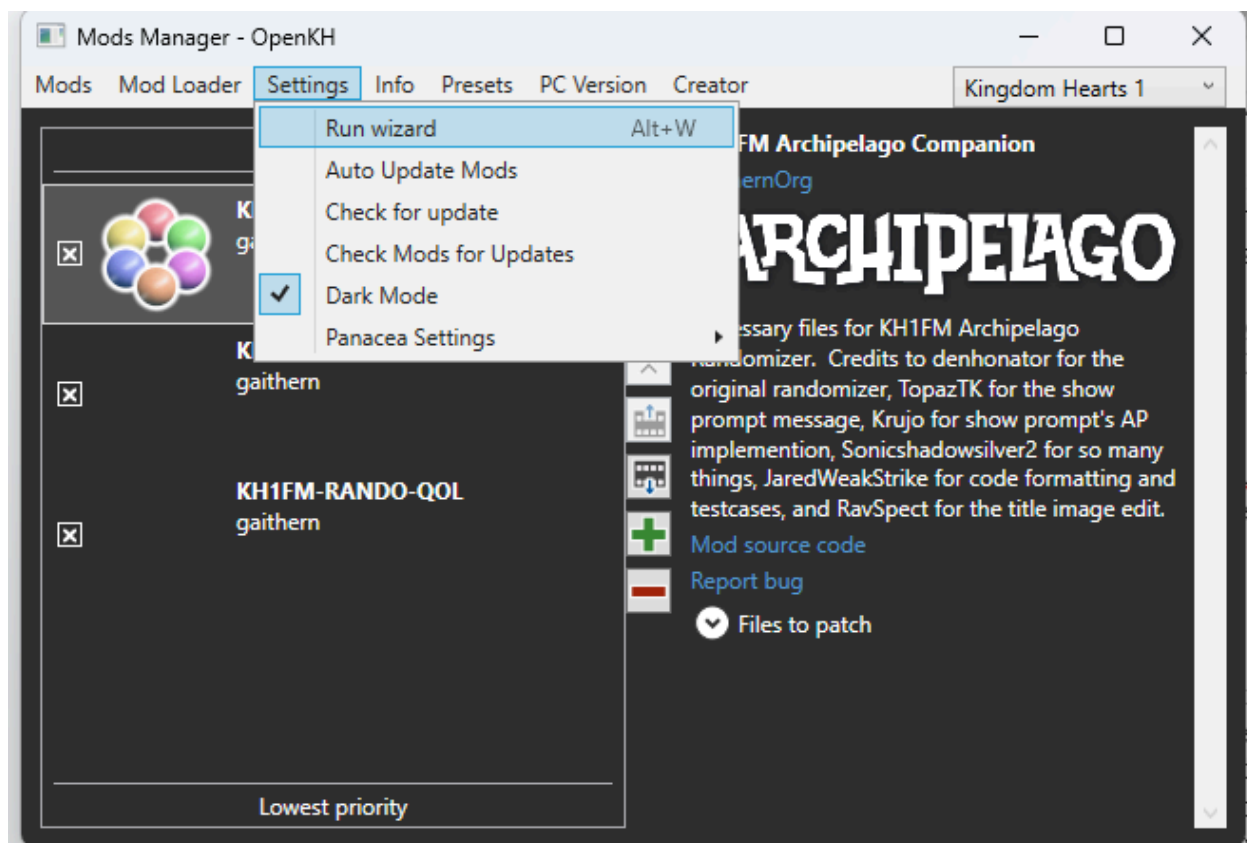
If files are being placed in that location, but the game isn’t receiving any items or sending any checks, there could be an issue with the mod portion of the game. You can check this by pressing F2 in game, which should bring up a lua console, like so:



You should see a list of scripts that output which version of the game that has been detected. If you don't see these messages about your game version being detected, you could be downpatched. KH1 should not be downpatched in order to play AP randomizer, you should be on the latest version of KH1.

You may also see some red text, indicating an error has occurred in one of the scripts. If you see such an error, please share it in the Kingdom Hearts 1 channel back on the Archipelago discord server.

If nothing comes up when you press F2, lua backend is not installed properly, and you'll need to reinstall (not reconfigure) Panacea + lua backend using the OpenKH wizard here:



## I can't open chests

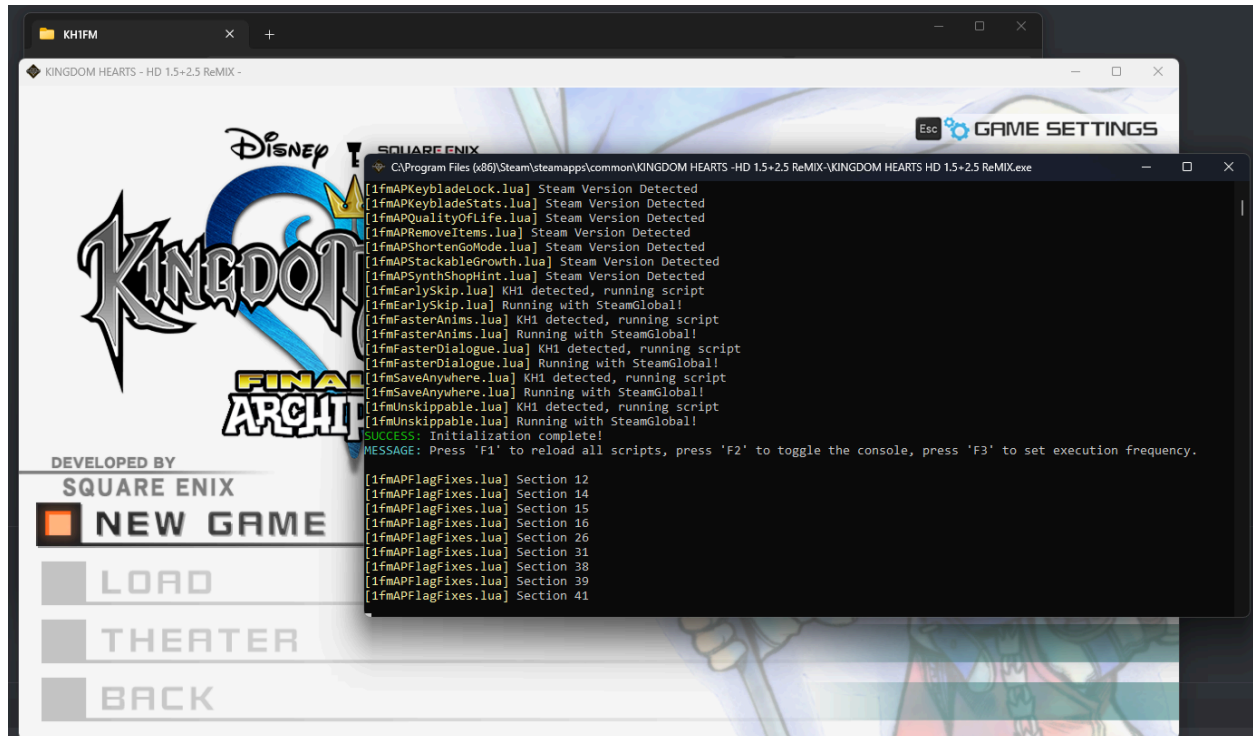
The game can determine whether the slot you've connected to has keyblade locking on by reading the config files placed by your client after reading your slot data from the server in the game communication path. If you navigate to the game communication path outlined above, you should see a file called "chestlocked.cfg" if you have keyblade locking ON or "chestsunlocked.cfg" if you have keyblade locking OFF.

AP_520.item	12/2/2024 3:17 PM	ITEM File	1 KB
AP_521.item	12/2/2024 3:17 PM	ITEM File	1 KB
AP_522.item	12/2/2024 3:17 PM	ITEM File	1 KB
AP_523.item	12/2/2024 3:17 PM	ITEM File	1 KB
atlantica.cfg	12/2/2024 3:17 PM	CFG File	1 KB
chestsunlocked.cfg	12/2/2024 3:17 PM	CFG File	0 KB
door.cfg	12/2/2024 3:17 PM	CFG File	1 KB
goal.cfg	12/2/2024 3:17 PM	CFG File	1 KB
hundred_acre_wood.cfg	12/2/2024 3:17 PM	CFG File	1 KB
keyblade_stats.cfg	12/2/2024 3:17 PM	CFG File	1 KB
required_reports_door.cfg	12/2/2024 3:17 PM	CFG File	1 KB

If no files are there, you can follow the same troubleshooting steps as the “My game is not sending/receiving items” section of this guide. However, if files are being communicated between game and client, but you fail to find either of these config files, your host likely has generated using an old apworld from before this setting was implemented.

### My game takes me to Destiny Islands after Dive to the Heart, is that normal?

No, and it indicates that something is likely wrong with your companion mod. You can check this by pressing F2 in game, which should bring up a lua console, like so:



You should see a list of scripts that output which version of the game that has been detected. If you don't see these messages about your game version being detected, you could be downpatched. KH1 should not be downpatched in order to play AP randomizer, you should be on the latest version of KH1.

You may also see some red text, indicating an error has occurred in one of the scripts. If you see such an error, please share it in the Kingdom Hearts 1 channel back on the Archipelago discord server.

If nothing comes up when you press F2, lua backend is not installed properly, and you'll need to reinstall (not reconfigure) Panacea + lua backend using the OpenKH wizard here:

