

California, Part 2

The Pilot Club: U.S. Tour

JULY 5, 2022



Not a TPC Member?! Click [here](#) to join!



- Recommended aeroplane: single or twin engine 100-150 kts.
- Set the weather as you like. Most use live weather with time set back a few hours.
- Moving map GPS. ForeFlight, FltPlan Go, Garmin Pilot.
- Bring your camera and share your pictures in our Discord.

If you'd like to fly the first part of the tour click [California tour Part 1.](#)

Suggested add-ons & charts

1. [Santa Barbara](#)
2. [Downtown Los Angeles](#)

3. [Hollywood Sign](#)
4. Los Angeles Sectional chart // Los Angeles TAC // Los Angeles FLY
5. San Diego Sectional Chart // San Diego TAC // San Diego FLY

WELCOME TO HOLLYWOOD!

Briefing

Depart **Santa Barbara Muni (SBA)** eastbound and continue following the coast, passing Point Mugu Nas (NTD), all the way to our first waypoint, **Point Dume**. Then, with just a short hop, **Malibu Beach** should be in view.

Once we're past Malibu, get ready to fly the **COASTAL ROUTE transition** through the LAX Bravo airspace on our way to **Vincent Thomas Bridge**, from there, we'll go direct to **Catalina Island (AVX)**!

Depart Catalina island east towards **Dana Point**, once we are near the coast we'll follow the San Diego VFR Corridor all the way to **Mormon Temple** and **MYF** thereafter. We'll continue on the southbound corridor until we reach our final destination **(SDM) Brown Field Muni**.

A bit of realism

We aim to interject real world parameters to our VFR flights. Read and understand the procedures prior to flight. Any questions or comments contact the Flight Ops team.

Coastal route southbound

Enter the Los Angeles Class B southbound abeam the Sepulveda Pass established on the Los Angeles 323 radial. After crossing the Los Angeles VOR, proceed outbound on the Los Angeles 123 radial until exiting Los Angeles Class B near the Vincent Thomas Bridge. Maintain altitude as assigned by ATC.

Use the LAX VOR, frequency 113.6, to determine radials 323° and 123°.

Flight Following Services are available on request and highly recommended in and around Class B, C, and TRSA areas.

**VFR TRANSITION ROUTE
(ATC CLEARANCE REQUIRED)
ALTITUDE ASSIGNED BY ATC**



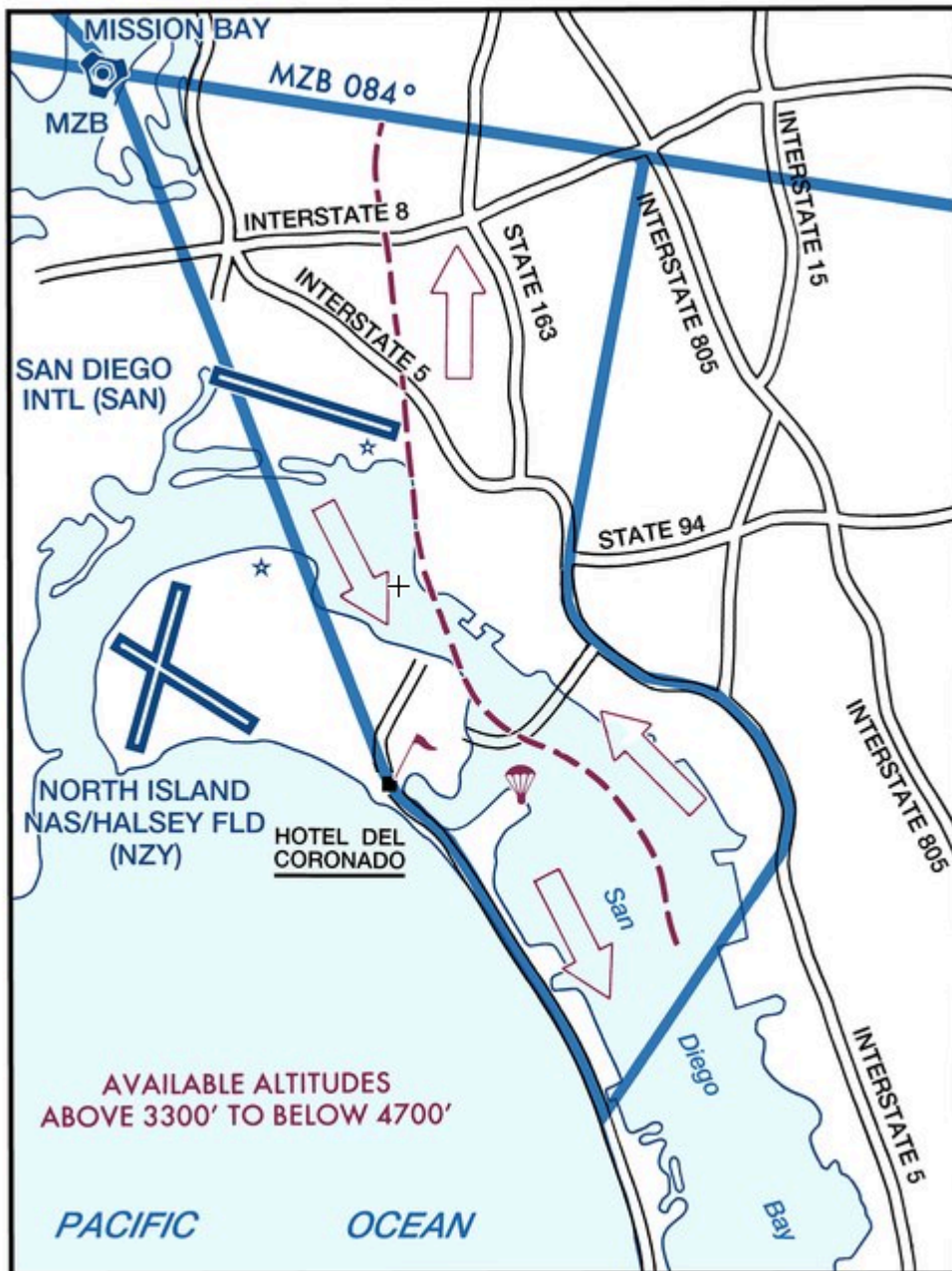
COASTAL ROUTE

VFR ONLY



San Diego VFR corridor

When transiting the VFR Corridor overlying San Diego Intl above 3300' and below 4700', pilots are encouraged to remain right of a Northwest/Southwest line extending across the San Diego Intl Runway 27 approach end. No communications or clearances with ATC are required while transiting the VFR corridor.



Airport information

Take a few minutes to become familiar with the airport, the runway diagrams, etc. Most of the information can be found on Skyvector's site. Each ICAO links to their respective pages.

Departure

Name	ICAO	Elevation ¹	Runways
Santa Barbara Municipal Airport	KSBA	13 ft	07/25 15R/33L 15L/33R

Aviation in the area began in 1914 when Lincoln J. Beachey flew an airplane across Goleta Valley. Two years later the Loughhead brothers, who later changed their name to Lockheed, established a seaplane factory on State Street (Alco Hydro-Aeroplane Company) and constructed a wooden ramp on West Beach to launch their planes. In 1928, Gordon Sackett and Royce Stetson landed a Hisso-powered airplane in a cow pasture near the corner of Hollister and Fairview Avenues and set up a flight school. That first airstrip marked the beginning of what was to become the **Santa Barbara Municipal Airport**.

Touch and go

Name	ICAO	Elevation ¹	Runways
Catalina Airport	KAVX	1,602 ft	04/22

Catalina Island was developed as a tourist site beginning in the 1920s by William Wrigley Jr., who owned most of the island under the Santa Catalina Island Company. In 1941 his son Philip K. Wrigley among others including Charles Hulen Moore built a runway on the island by blasting and leveling two hills and filling the canyon between them to create a leveled area. The airport opened as Buffalo Springs Airport in the spring of 1941, as a private airport. Prior to this, only seaplanes landed at Hamilton Cove Seaplane Base, just north of Avalon.

Arrival

Name	ICAO	Elevation ¹	Runways
Brown Field Municipal Airport	KSDM	526 ft	08L/26R 08R/26L

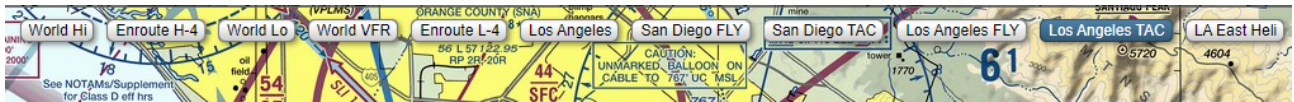
Brown Field is 1.5 miles north of the US/Mexico border in the Otay Mesa Community of the City of San Diego. The airport, originally named East Field in honor of Army Major Whitten J. East, opened in 1918 when the U.S. Army established an aerial gunnery and aerobatics school to relieve congestion at North Island.

Flight plan

KSBA - Point Dume - Malibu Beach - COASTAL ROUTE transition - KAVX - Dana Point - Mormon Temple - MYF - Coronado Bridge - KSDM

Use the briefing section to visualize the route in your electronic flight bag (EFB). The challenge of VFR is to not become *Children of the Magenta*. The Flight Ops team wants you to understand the flight plan and special rules with certain airspace; then execute the plan. Use your charts as reference instead of a crutch.

Use the dynamic charts that are made available in SkyVector to see sectional, TAC, FLY, and other specialized charts for the area.



VATSIM

One of the goals during the flight is to have air traffic control support from real people through the VATSIM network. Register for a free account at vatsim.net and complete the new member orientation in order to join the network.



When filing a flight plan with VATSIM make sure to add the following remarks to help support the club and increase our presence on the network.

/RMK OPERATED BY THEPILOTCLUB.ORG

Flight Ops General Aviation Team

- Paul, TPC25
- Cody, TPC991
- Miguel, TPC83
- Marc, TPC444

For more information about this organisation visit thepilotclub.org. There is also good information on the [Standard Operating Procedures](#) page. We also have a very active Discord server.

References

1. https://en.wikipedia.org/wiki/Santa_Barbara_Municipal_Airport
2. https://en.wikipedia.org/wiki/Brown_Field_Municipal_Airport
3. https://en.wikipedia.org/wiki/Catalina_Airport
4. https://www.faa.gov/air_traffic/flight_info/aeronav/digital_products/vfr/