

THE PRESIDENT'S OFFICE
REGIONAL ADMINISTRATION AND LOCAL GOVERNMENT
BUNDA DC WESTERN CLUSTER

FORM TWO PRE -MOCK EXAMINATION

024

BIOLOGY

TIME: 2:30Hours

June, 2022 .

INSTRUCTIONS

1. This paper consists of section A, B and C with a total of **Eleven (11)** questions
 2. Answer all questions
 3. Cellular phones are **not allowed** in the examination room
 4. Write your examination number on every page of your answer booklet.
-

SECTION A *Answer all questions*

1.
 - (i) The car utilizes fuel to release energy and unfortunately emits smoke this is similar to living organisms when exhibiting _____ and _____ process.
A) Respiration and Movement B) Nutrition and excretion
C) Nutrition and movement D) Movement and irritability
 - (ii) Which of the following bellow are examples of water-borne diseases?
A) Malaria and bilharzias B) Diarrhoea and malaria
C) Yellow fever and typhoid D) Cholera and typhoid
 - (iii) One of the distinctive features of kingdom Fungi is possession of:- A) Plasma membrane B) Chitin materials
C) Cell membrane D) Cellulose materials
 - (iv) The process by which green plants and other organisms use sunlight energy to manufacture their own food is known as _____.
A) Photosynthesis B) Autotrophic nutrition C) Respiration D) Digestion

- (v) Unexpected event which can cause injury and sometimes death is called. A) Emergency
B) Disaster C) Outbreak D) Accident
- (vi) John has behaviour of talking while eating, hence he can be considered to have _____. A)
Talkative manner B) Chatty manner C) Bad manner D) Eating manner
- (vii) Which safety precaution should be taken when administering First Aid to a wounded
person?
A) Washing hands with soap B) Calling the ambulance for pick-up
C) Washing the wound with Soap D) Wearing protective gloves.
- (viii) The following are the characteristics of prokaryotes except _____.
A) Have nuclear membrane B) Have cell wall
C) Have nuclear materials D) They are single celled
- (ix) Which of the following are the end products of digestion when lipids are digested
completely?
A) Glucose and fructose B) Fatty acid and glycerol
C) Fatty acid and glucose D) Glucose and glycerol
- (x) Suppose you are provided with small sections of cells from different organisms, which
equipments will you use to identify them?
A) Microscope B) Test tube C) Watch glass D) Petri dish

2. For each of the items (i) -(x), write **True** if the statement is correct or **False** if the statement is not
Correct in the space provided

- (i) A bacterium can be distinguished from amoeba by possession of cell wall.....
- (ii) Digestion of protein starts in the mouth.....
- (iii) Mosses provide shelter for small organisms.....
- (iv) A structure which prevents the entrance of food and water into the trachea is called
villus
.....
- (v) Heart, liver and leaves are examples of organs
- (vi) Tuberculosis is a communicable disease
- (vii) An experiment usually tests the problem identified
- (viii) Materials which can be recycled includes aluminium cans and used hospital syringes
.....
- (ix) We can use dry wooden stick to move a victim of electric shock from the source of
electric current.....
- (x) Botanists study both plants and animals

3. Match each item in List A with a correct response in List B by writing its letter below the
number of the corresponding item in the table provided.

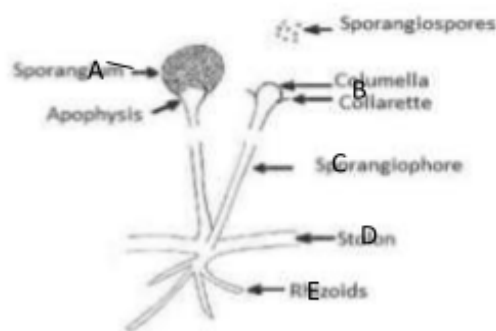
LIST A	LIST B
--------	--------

(i) A term used for animals with four chambered stomach (ii) A malnutritional disorder caused by deficiency of protein in children (iii) An enzyme responsible for digestion of protein (iv) Failure to see in dim light due to lack vitamin A in diet (v) Malformation of bones caused by deficiency of vitamin D (vi) Bleeding of gums and poor healing of wounds due to deficiency of vitamin C (vii) A painful sensation caused by regurgitation of stomach contents. (viii) A substance responsible for coagulation of milk (ix) A person has loss sensation and appetite due deficiency of vitamin B1 (x) A painful sore in the lining of digestive tract.	A. Night blindness B. Pepsin C. Pellagra D. Scurvy E. Ulcers F. Beriberi G. Rickets H. Kwashiorkor I. Dental Caries J. Marasmus K. Heart burn L. Rennin M. Anorexia Nervosa N. Ruminants O. Bulimia Nervosa
---	---

4. Complete each of the following statements by writing the correct answer in the space provided.

- (i) Taxonomic unit where the member share the least number of characteristics is
- (ii) Taxonomic unit with fewest number of members is known as
- (iii) The process of giving organism scientific names is known as
- (iv) The type of classification which is based on few observable features is called
- (v) The process of sorting living organisms into groups is called

5. (a) The villagers claims about the breads sold by Mangi has spoiled, then you tried to observe by using hand lens and you see the structure resembled to the diagram below:-



- (i) What is the name of organism represented in the figure above?
- (ii) Name the parts labelled with letter A, B, C, D and E
- (iii) Mention the phylum in which the organism named in (a) (i) belongs (b) Outline two disadvantages of Kingdom Fungi.

6. (a) What do you understand by the term “Personal hygiene”? (b) State four (4) principles of personal hygiene (c) State four (4) principles of good manner.
7. (a) Define the following terms:- (i) Mutualism
(ii) Parasite (iii)
Host
(b) Give two examples for each of the following group of parasitic organism
(i) Endoparasite
(ii) Ectoparasite
8. (a) Draw a well labelled diagram of animal cell. (b) What is the function of nucleus in a cell?
(b) Give three differences between animal cell and plant cell.
9. You are given a chance to supervise biology laboratory constructors. Give them directions about the quality of good biology laboratory.

SECTION C

10. Explain the cause, two symptoms, transmissions and prevention measures of cholera
11. The knowledge of biology is very important in the human life. Argue the statement by using five points.