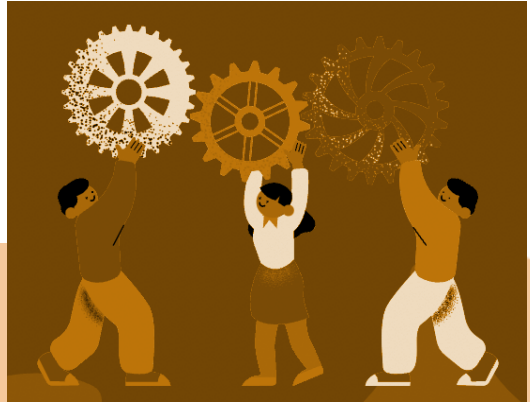


GENERAL ADVISOR



Serve as a primary source of contact and support for aspiring medical school applicants. Help students navigate the complex process of applying to medical school and beyond. You will be matched by our secretary to a student based on your strengths and experiences.

- Leverage your unique strengths to offer personalized guidance that resonates with the student's aspirations and challenges.
- Offer guidance beyond just application submission, encompassing various aspects of their medical school journey.
- Help students explore potential medical schools that align with their goals and values.
- Support students in considering the bigger picture, helping them understand the demands and expectations of medical school life.
- Offer advice on managing the academic workload, extracurricular involvement, and maintaining a work-life balance.

Time Commitment: as needed, flexible, no minimum commitment