



YARMOUTH ATHLETIC DEPARTMENT

Empowering Students



David Creech, Athletic Director

Sarah Holmes, Athletics Assistant/Trainer

Spring Sports 2021 Spectator Information

Yarmouth Athletics is pleased to announce we will be supporting spectator involvement for the Spring Sports Season. The latest State guidelines will allow us to support a limited number of spectators and maintain the game personnel needed while providing the participants the space needed to safely compete.

GUIDELINES FOR SPECTATORS

Spectators...

1. must complete a self assessment health screening **prior to attending**

Yarmouth Athletics - COVID-19 Health Screening Assessment

- a. In order to protect the health of participants attending Yarmouth Athletic Events, all spectators must self-screen for symptoms or other risk factors of COVID-19 prior to entering a Yarmouth School Department (YSD) facility. Spectators must use the information provided in this section for confirmation to Yarmouth Athletics that they are approved to enter YSD facilities.
 - b. All responses to the following questions should be "yes" or "no":
 - c. Have you experienced any of the following symptoms in the past 48 hours: fever or chills, cough, shortness of breath or difficulty breathing, fatigue, muscle or body aches, headache, new loss of taste or smell, sore throat, congestion or runny nose, nausea or vomiting, diarrhea?
 - d. Have you been in close physical contact in the last 14 days with anyone who is known to have laboratory-confirmed COVID-19 OR anyone who has any symptoms consistent with COVID-19?
 - e. Are you isolating or quarantining because you may have been exposed to a person with COVID-19 or are worried that you may be sick with COVID-19?
 - f. Are you currently waiting on the results of a COVID-19 test?
 - g. Have you traveled in the past 10 days?
 - h. If you answer "yes" to any of the above questions, you must not enter the Yarmouth High School Campus or any YSD facility as a spectator for a Yarmouth Athletics Event.
2. must sit or stand **at least six feet** from non-family/household spectators
note: Distancing is required regardless of an individual's vaccination status
 3. must leave the facility at the conclusion of the event
 4. must watch events in the designated areas for spectators
 5. may not enter the playing area or contact any participant/game personnel

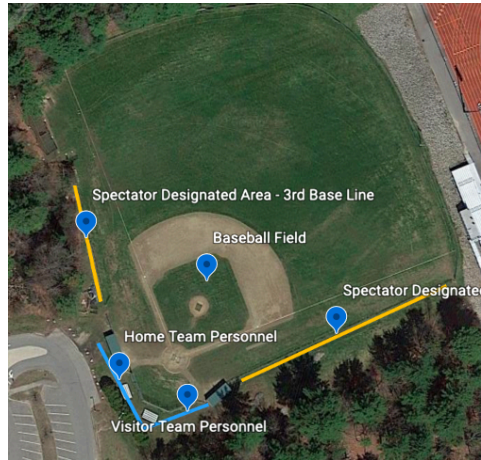
Please note:

- Spectators who are viewed by school staff as "non compliant" may be asked to leave the venue
- If a parent is waiting for their child they should do so in the confines of their vehicle
- In the event of a positive COVID-19 case at an event in which an individual attends, spectators will **not** be contacted

Designated Areas for Spectators

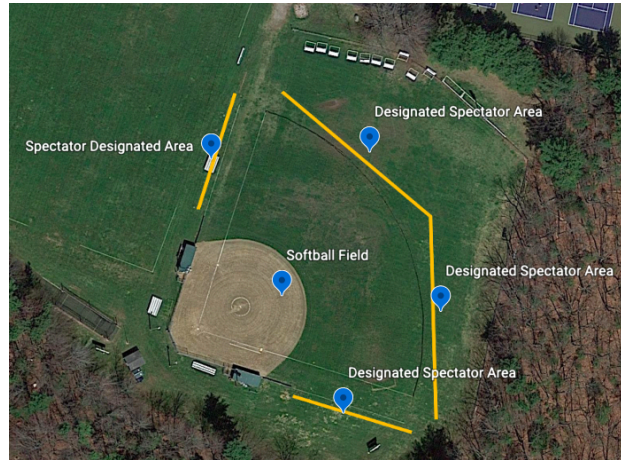
Baseball Field

- Behind fence on 1st and 3rd base line
- Outside of team personnel areas



Softball Field

- Along 1st and 3rd base line
- Behind Temporary Fence



Turf Field and Track

- Bleachers
- Behind fenced area adjacent to bleachers



Tennis Courts

- Outside of fenced off tennis courts
- Physically distanced at least 6 feet from team personnel

