



## Quick Start Guide

***Welcome to Livewire Indicators!*** These tools were created to help our new and or struggling traders find their edge and start to make consistent profits in the market. Our goal was to create simple, customizable and affordable tools that will help traders at all experience levels.

*Most indicators work great in strong trends. The Livewire Trend Tracker and Livewire MacDuo shine in trending and choppy price action.*

***Good risk management is the foundation of a profitable edge in the market.*** Over leveraging on prop accounts – risking more than \$200 per trade on a \$2000 drawdown account – is a recipe for a busted account.

***Good risk management is strongly recommended.*** A good rule of thumb is to keep your risk low enough where losing 10 trades in a row will not bust your account.

***NO STRATEGY or system will make you a profitable trader if you do not manage your risk appropriately!***

*Your chance of success on any given trade is at best 60%. That means you will lose the trade 40% of the time. If you over risk on your trades you will blow your account.*

**[Click here](#)** for more help with risk management.

*The Livewire tools all pack a punch and can be used in any strategy or system. I use a combination of candlestick charts and a Livewire renko brick chart for precise entries.*

***This set up guide will help you get started on my personal templates,*** however, you can use these tools on any chart, instrument, or with your current system. They work on all instruments, you will just need to adjust the brick sizes on your Livewire Renkos.

***If you are brand new to NinjaTrader,*** welcome to the community! Please **[click here](#)** and use this full Ninja install tutorial. Then return here to finish the Livewire

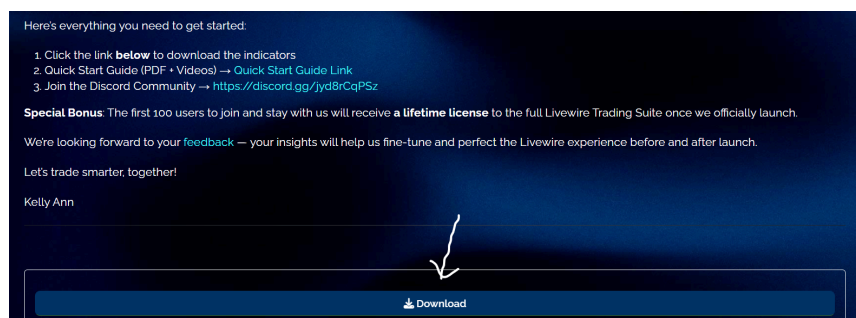


set up steps below. I strongly recommend you [join](#) the FTKA discord for community support and extra help.

If you need help, open a ticket on the [Livewire Discord](#). Support is available from 9am EST to 6pm EST. You can also email [support@livewireindicators.com](mailto:support@livewireindicators.com).

## OK let's get started ....

**Step 1** - Install the Livewire Indicator suite you have already downloaded from the welcome page. [Click here](#) for a step by step video tutorial on how to install indicators.



---

**Step 2** - Download and install the additional free indicators on my personal charts [here](#). These indicators are needed to exactly match my own custom Livewire charts.

If for some reason you have issues and need to start over, [here](#) is a quick guide on how to uninstall indicators on ninjatrade.

---



**Step 3** - Download and install my personal templates. I use 4 charts th daily, 30 minutes, 15 minutes and a 20-40-80 Livewire Renko brick chart. I will add a library of alternate chart templates you can test out below.



[Click here](#) for a step by step video tutorial on how to install chart templates on ninja.

[Click here](#) for a pdf tutorial on how to install templates.

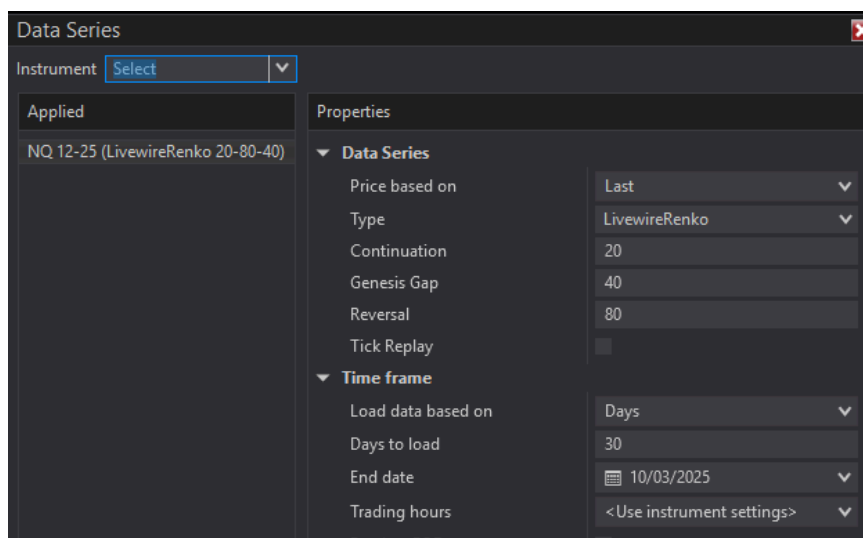
**Here are my 4 templates.** Note: Expected Levels is not being released yet. I have added Weekly Pivots as an alternative to help you find the daily target. EMs are posted daily in the FTKA Discord on the main channel.

Click on these links to download my templates.

**Chart 1 Download Link - [Livewire Combined Trend Tracker and MacDuo Template](#)**

I use 20-40-80 for NQ, 3-5-10 for GC, 5-10-20 for ES/RTY.

See [how to set up Brick Shortcuts](#) for other size suggestions.



### Chart 2 Download Link - [Livewire 60 Minutes IB Chart](#)

This chart also shows the RTY/NY Session gap.

Live

### Chart 3 Download Link - [Livewire 15 Minutes VP Chart](#)

### Chart 4 Download Link - [Daily Chart with Weekly Fib](#)

---

**Step 4** - Open 4 charts and go to each one and right click - select templates - load and apply the template. Then change the bricks. If you don't see any

candles or bricks, just change the short cut to any size and then change it back to what you want. Bricks will appear.

[Here](#) you can watch a step by step video on how to set up brick short cuts.

---



**Data Settings:** Please load 30 days on the Livewire Renko and the 60 IB Chart. Do not load more than 10 days of data for the Volume Profile Chart. You must enable tick data for the Volume Profile chart to work properly. Here is a video to explain how to enable tick data. Only enable tick data for the Volume Profile Chart. It will take at least 5 minutes to load all of the tick data the first time. After that your charts will load fast. Blame ninja sorry!

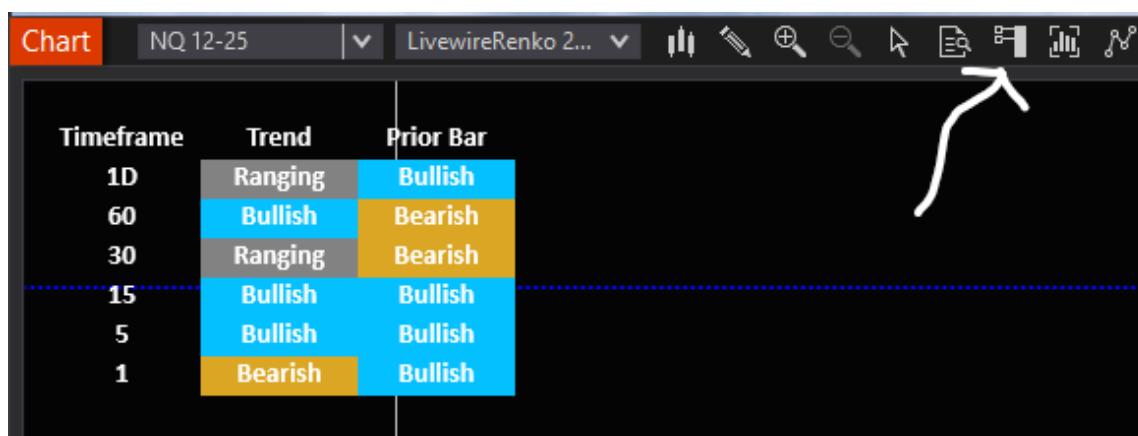
---

the bottleneck isn't raw hardware — it's how NinjaTrader 8 handles tick data requests and rendering.

Loading 10 days of tick data on a 15-minute chart can be very heavy because NT8 pulls and processes every single tick before building the bars.

---

**Step 5** - Now that your charts are set up, it is time to set up an ATM. If you used my chart template, you will see the chart trader on your renko chart. If you did not use my template, this is what you will click on your chart to turn it on.





Here are the parameters for my personal ATM

	Quantity	Stop loss	Profit	Stop strategy
Target 1	1	200	80	None
Target 2	1	200	400	40 Ticks

Auto Breakeven (t)
Profit Trigger: 40, Plus: 1

Auto Trail (t)
<input type="radio"/> None <input type="radio"/> 1 Step <input type="radio"/> 2 Step <input type="radio"/> 3 Step

Simulated stop
Volume Trigger: 1, Enabled

## The Indicators:

Here is a list of the indicators and links to the videos that explain the settings for them.

[Livewire Trend Tracker](#) This [Video](#) explains how I use this). Here are [live trades](#).

[LiveWire MACDuo](#)

[LiveWire Gap Tracker](#) (includes Initial Balance [click here](#) for more info)

[LiveWire Key Levels](#)

[LiveWire Waddah Explosion](#)

[LiveWire Volume Profile](#)

[LiveWire Renko](#)

LiveWire Renko Boundaries - Explained in Volume Profile [Video](#).

LiveWire Reversals - Here is a [Video](#) explaining how I trade reversal bars.



---

## **Important Risk Disclaimers**

### **General Trading Risks**

Trading in financial markets is inherently risky due to the unpredictable nature of the market. Past performance is not an indicator of future results. You could lose all or more than your initial investment. Livewire Indicators does not assume any responsibilities, make any guarantees whatsoever. All risks and all trading decisions are made by you and you are solely and individually responsible for the outcome of those decisions.

Livewireindicators.com makes every effort to ensure the accuracy of its information. However, we cannot be held responsible for oversights or inaccuracies from end users and data interpreters.

Day trading strategies involving security futures contracts and other products pose special risks. As with any financial product, persons who seek to purchase and sell the same security future in the course of a day to profit from intra-day price movements ("day traders") face a number of special risks, including substantial commissions, exposure to leverage, and competition with professional traders. You should thoroughly understand these risks and have appropriate experience before engaging in day trading.