



Dorset Street Walk/Bike Audit



How easy and safe is it to bike, walk, or roll to school?

Date: _____ Time: _____ Weather: _____

This survey can be done with a group or on your own. How many people are filling out this survey together?

Number of middle school students: _____

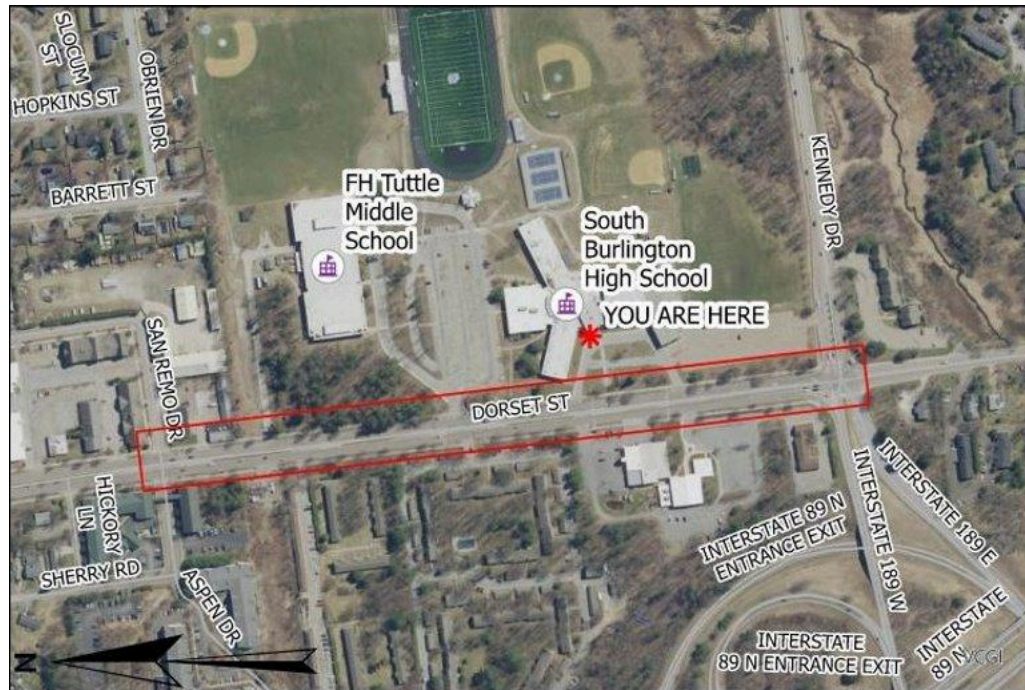
Number of high school students: _____

Number of parents/guardians: _____

Number of school staff or teachers: _____

Number of community members: _____

Other: _____



Route

This walk/bike audit is for the section of Dorset Street that extends from Kennedy Drive to Aspen/San Remo Drives.

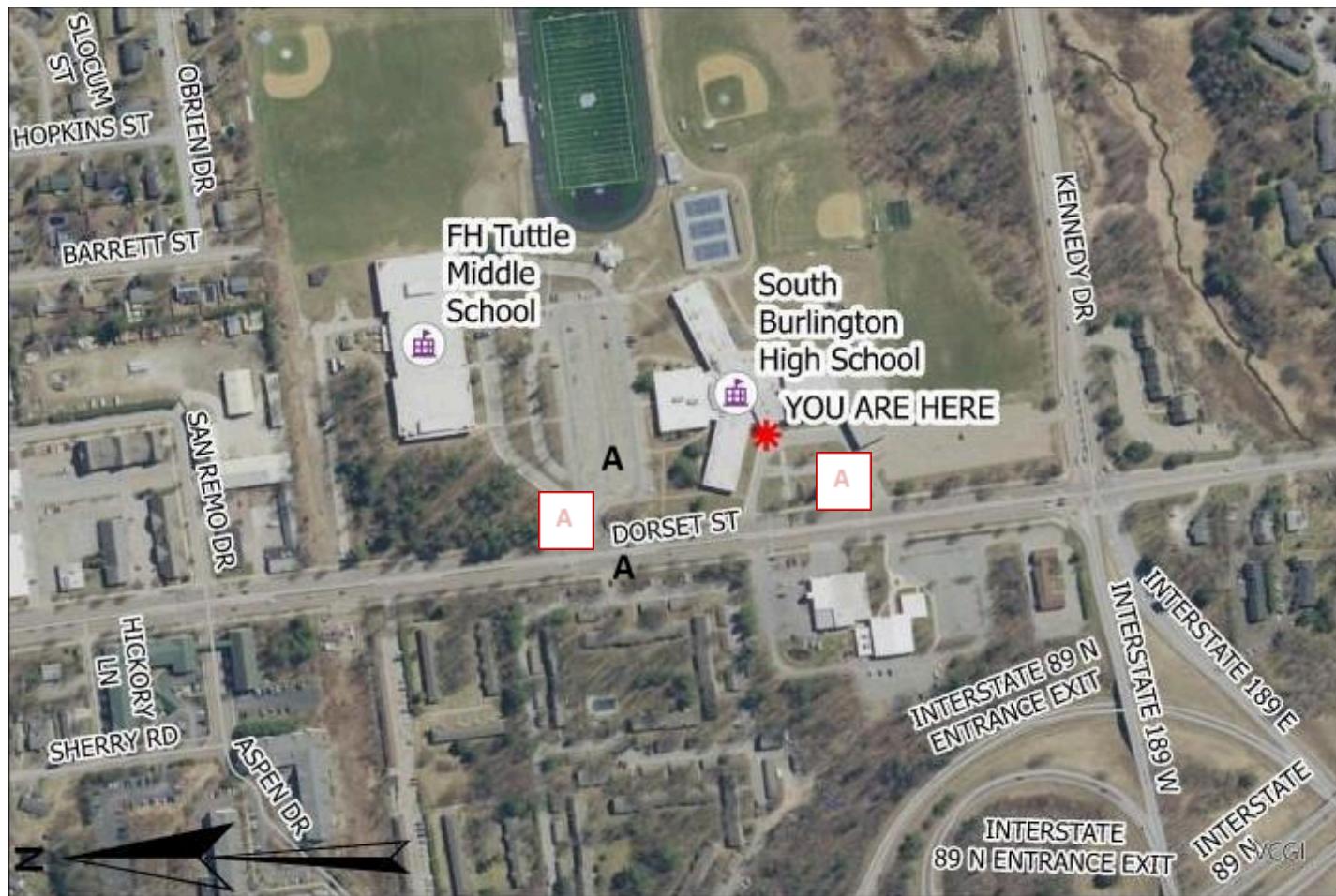
See instructions on reverse side.

Instructions

The walk/bike audit is broken into four separate sections (pages) for (1) sidewalks and bike paths; (2) street crossings, intersections and driver behavior; (3) safety and comfort; and (4) school vicinity. Each section has its own map. We invite you to complete as many of these sections as you are able.

In each section, you will see a list of potential problems (labeled A-Z). Use the letters to label the maps where you see any of these problems during your walk.

See below for an example sidewalk map. In the street crossings/intersections/driver behavior section, “A” means “The road is too wide to cross easily”. You would write an “A” at any place on the street crossings and intersections map where the road feels too wide to cross easily.



SIDEWALKS AND BIKE PATHS

Use the letters below to label the map on the back of this page with any sidewalk or bike path problems you see.

Sidewalks and Bike Paths

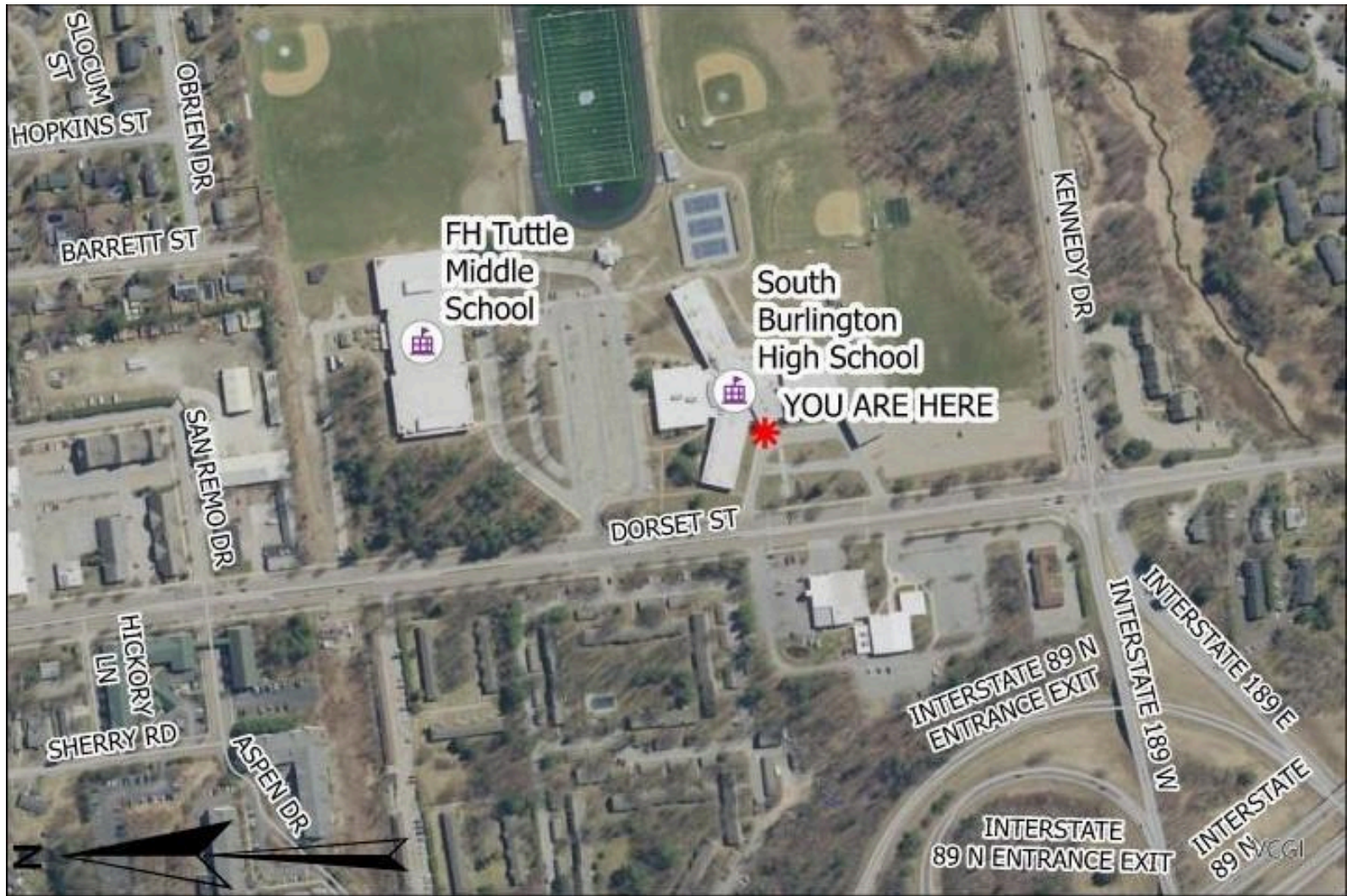
- A. There is no sidewalk
- B. There is no bike path
- C. Sidewalk is not wide enough
- D. Bike path is not wide enough
- E. Sidewalk or bike path ends abruptly
- F. Sidewalk or bike path surface is poorly maintained (e.g., snow-covered, bumpy, cracked etc.)
- G. Sidewalk or bike path is blocked by plants, poles, signs, cars, trucks, etc.
- H. Sidewalk or bike path is right next to the street (not separated by grass, trees, parked cars, etc.)

Overall, the quality and safety of **sidewalks** is (circle one): 😞 😞 😐 😊 😄

Overall, the quality and safety of **bike paths** is (circle one): 😞 😞 😐 😊 😄

Did you see something else about the **sidewalks and bike paths**? Please share that in the space below!

Problems with Sidewalks and Bike Paths



Key

- There is no sidewalk
- There is no bike path
- Sidewalk is not wide enough
- Bike path is not wide enough
- Sidewalk or bike path ends abruptly

Key

- Sidewalk or bike path surface is poorly maintained (e.g., snow-covered, bumpy, cracked etc.)
- Sidewalk or bike path is blocked by plants, poles, signs, cars, trucks, etc.
- Sidewalk or bike path is right next to the street (not separated by grass, trees, parked cars, etc.)

Street Crossings and Intersections, and Driver Behavior

Please use the letters below to label the map on the back of this page with any street crossings, intersections, or driver behavior problems you see.

Street Crossings and Intersections

- A. The road is too wide to cross easily
- B. Traffic signals do not give enough time to cross the street
- C. The crossing does not have a button you can push
- D. There is no crosswalk or the crosswalk is not marked on the ground
- E. There are no signs to tell drivers where the crossing is, or the signs are hard to see
- F. I have to walk too far to find a safe, marked crosswalk
- G. Intersection does not have a curb ramp for carts, wheelchairs, strollers, walkers, etc.

Overall, the quality and safety of **street crossing and intersections** is (circle one): 😞 😡 😐 😄 😁

Did you see something else about the **street crossings or intersections**? Please share that in the space below!

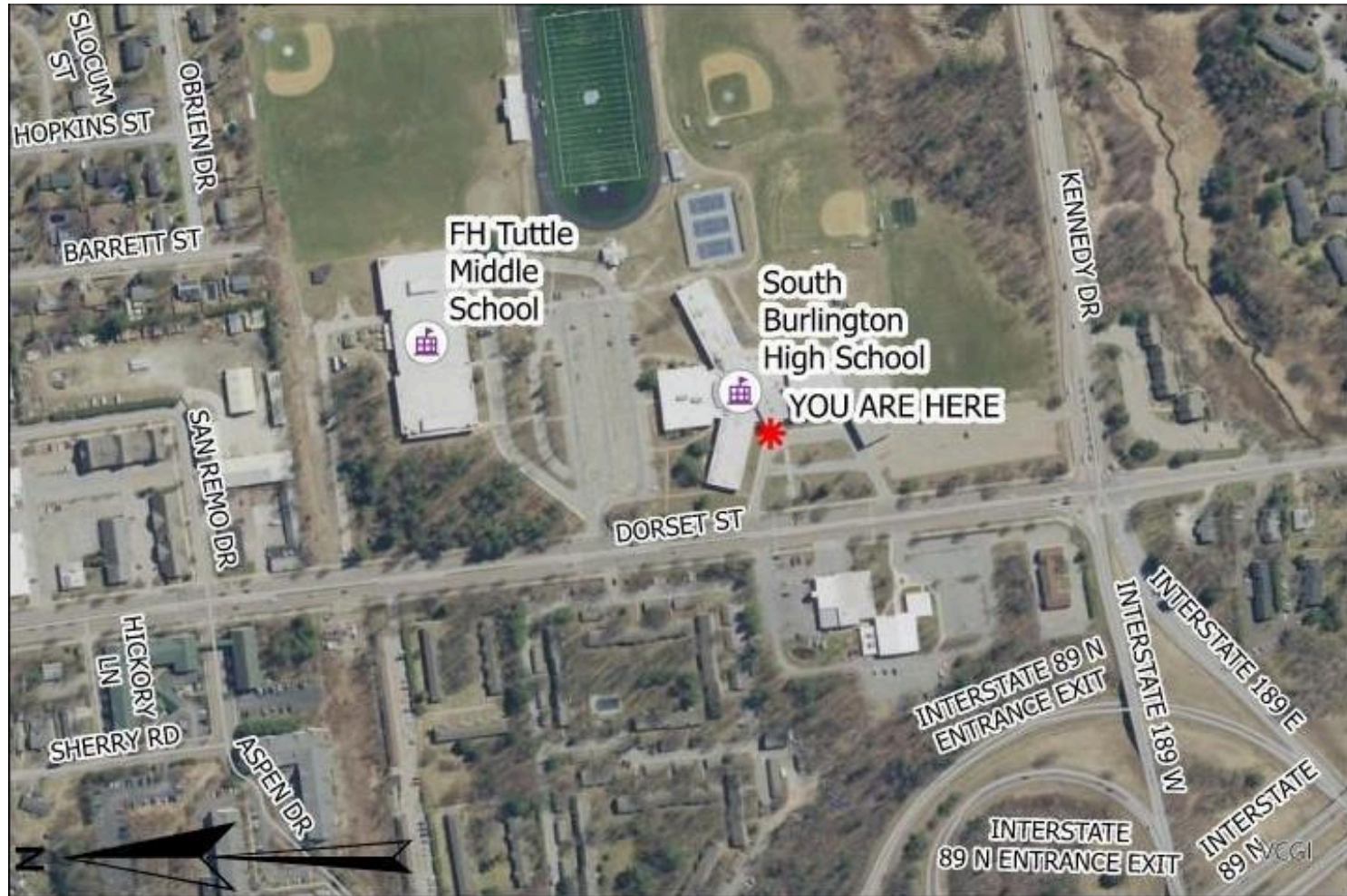
Driver Behavior

- H. Drivers do not stop at stop signs or crosswalks
- I. Drivers seem to be speeding
- J. Drivers do not yield to people walking
- K. Drivers are distracted (on the phone, texting, not watching the road)
- L. Drivers are not looking out for people walking, or make sudden turns

Overall, the quality and safety of **driver behavior** is: 😞 😡 😐 😄 😁

Did you see something else about **driver behavior**? Please share that in the space below!

Problems with Street Crossings, Intersections, and Driver Behavior



Key

- The road is too wide to cross easily
- Traffic signals do not give enough time to cross the street
- The crossing does not have a button you can push
- There is no crosswalk or the crosswalk is not marked on the ground
- There are no signs to tell drivers where the crossing is, or the signs are hard to see
- I have to walk too far to find a safe, marked crosswalk

Key

- Intersection does not have a curb ramp for carts, wheelchairs, strollers, walkers, etc.
- Drivers do not stop at stop signs or crosswalks
- Drivers seem to be speeding
- Drivers do not yield to people walking
- Drivers are distracted (on the phone, texting, not watching the road)
- Drivers are not looking out for people walking or make sudden turns.

Safety and Comfort

Please use the letters below to label the map on the back of this page with any safety or comfort problems you see.

Safety

- A. Car speeds are too fast
- B. There is too much traffic
- C. Streetlights for nighttime lighting are not there, or not working
- D. There are people who bully others
- E. I'm afraid other people might hurt me
- F. Scary dogs or other animals are present

Overall, the feeling of **safety** on your walk is: 😞 😞 😐 😊 😄

Did you see something else that made you **feel unsafe**? Please share that in the space below!

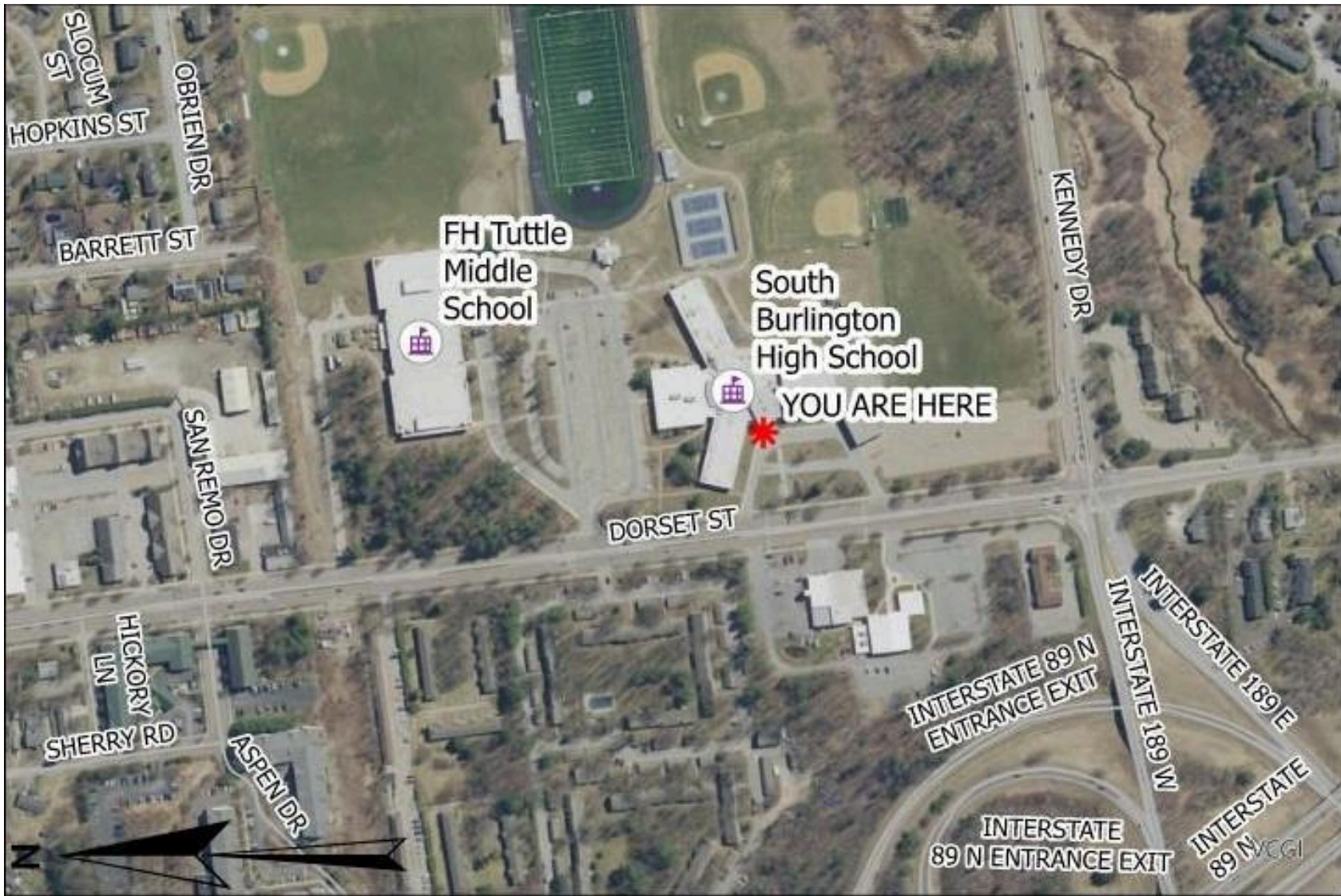
Comfort

- G. There is not enough shade from trees, homes, and buildings
- H. There are few or no street trees or plants
- I. There are empty lots or rundown buildings
- J. The street/sidewalk needs benches and places to rest

Overall, the **comfort and appeal** of your walk is: 😞 😞 😐 😊 😄

Did you see something else that was **uncomfortable**? Please share that in the space below!

Problems with Safety and Comfort



Key

- Car speeds are too fast
- There is too much traffic
- Streetlights for nighttime lighting are not there, or not working
- There are people who bully others
- I'm afraid other people might hurt me

Key

- Scary dogs or other animals are present
- There is not enough shade from trees, homes, and buildings
- There are few or no street trees or plants
- There are empty lots or rundown buildings
- The street/sidewalk needs benches and places to rest

School Vicinity

Please use the letters below to label the map on the back of this page with any problems you see in the school vicinity.

School Vicinity

- A. No signs for school crosswalks
- B. No signs for school vicinity speed limit
- C. Signs are hard to read or are damaged
- D. Drivers are going too fast for school vicinity
- E. Idling cars
- F. Backed-up line of cars during arrival or drop-off

Overall, the comfort and safety of the **school vicinity** is: 😞 😞 😐 😊 😄

Did you see something else about the **school vicinity**? Please share that in the space below!

Problems in the School Vicinity



Key

- No signs for crosswalks
- No signs for school zone speed limit
- Signs are hard to read or are damaged
- Drivers are going too fast for school zone
- Idling cars
- Backed-up line of cars during arrival or drop-off