



Article Title (English, Capitalize Each Word, 12 pt, bold, max. 16 words)

First Author¹, Second Author², Third Author³

¹Author affiliation: Department/Program, Faculty, University, City, Country

²Department of Biochemistry and Medicinal Chemistry, Faculty of Medicine, Universitas Sriwijaya, Palembang, Indonesia

³Biomedical Sciences Doctoral Program, Faculty of Medicine, Universitas Sriwijaya, Palembang, Indonesia

ARTICLE INFO

Keywords:

3-5 keywords

(Enter after each keyword)

Corresponding author:

First Author

E-mail address:

firstauthor@unsri.ac.id

Please add the corresponding author's phone/Whatsapp number here. We will not publish your phone number, the number will solely be used for easier communication between the editorial team and the author(s).

All authors have reviewed and approved the final version of the manuscript.

<https://doi.org/10.32539/BJI.v7i3.538>
(to be filled by the journal)

ABSTRACT

Introduction. The abstract should be written in English with written in one paragraph using Indonesian and English with Cambria font, size 8 pt, single space as used in this template. The abstract should be divided into the following sections: Introduction, Methods, Results, Conclusions. **Methods.** The abstract contains a brief introduction, the purpose of the study, a brief explanation of the methods, results of the study, and conclusions. **Results.** The word count of the abstract should not exceed 250 words. **Conclusion.** Keywords are to be written in the left column, pressing Enter after each keyword. Three to five keywords relevant to the study may be used.

1. Introduction

The introduction should contain the background of the study, including prior studies and previous reports from other studies. For example, if this study is a follow-up of a previously conducted pilot study, please include the pilot study as part of the background. The rationale and significance of the study should also be explained in this part. Previous findings and existing contradictions should also be included in this section. The study's novelty and aims or research question should also be written in this section.

For example, there have been contradicting reports on the efficacy of a certain antimicrobial drug towards *Staphylococcus aureus* in soft tissue in¹fections. Therefore, the study aimed to determine the efficacy of that drug in SSTI patients at a given healthcare facility.

2. Methods

The Methods section should explain in detail the methods used in the study, including the study design, population and sampling, sampling methods (including the sample size calculations, where applicable), variables, treatments/interventions to the subject (if experimental), measurements, laboratory analysis, and statistical analysis, in accordance to your study. The methods used in the study should be explained clearly and concisely for other researchers to follow, should they decide to conduct a similar study. If the methods are novel or have not yet entered widespread usage, please include your references.

Ethical clearance needs to be obtained prior to the commencement of the study. Please include the number of your

ethical clearance certificate here in this section.

3. Results

Results of your study may be presented as tables, graphs, and supporting images where applicable (e.g. PCR-RFLP or Western blot bands, histopathological features, wound size during follow-up, or other supplementary visuals).

The narration of the Results section should provide the interpretation of the results, and not merely repeating the results already available in tables or graphs.

Placement of the tables and figures should be at the top or bottom of the page, as shown in the following example (Table 1).

Table and figure titles should be written in sentence case, as shown in the following examples (Figure 1).

Table 1. Sample table placement in your article

(Cambria font, 10 pt, Bold, centered. Text within table should be 10 pts or smaller.)

Treatment Group	Wound area (cm ²)		<i>p</i>
	Pre-treatment Mean	Post-treatment Mean	
Salve base	2.403	0.356	0.001**
Binahong leaf extract 2.5%	2.368	0.225	0.001**
Binahong leaf extract 5%	1.427	0.259	0.001**
Binahong leaf extract 10%	2.069	0.198	0.001**
Povidone iodine 10%	2.208	0.302	0.001**

Paired T test, *p* = 0.05

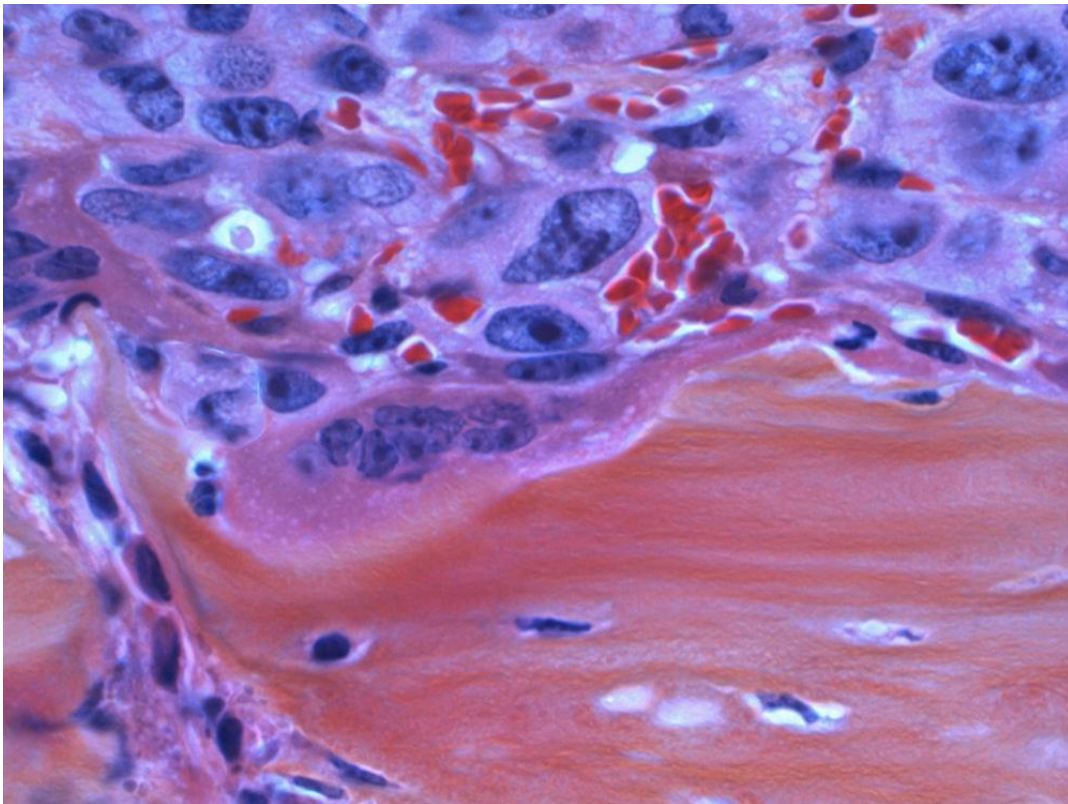


Figure 1. Sample figure placement

(Sample photo by the National Cancer Institute on Unsplash)

(Cambria, 10 pt, Bold, centered and sentence case.)

4. Discussion

This section discusses the main findings of the study, novel findings, and the results of the study in general. Authors may compare their findings to existing literature and previous studies, providing a logically sound explanation why the findings are similar to or different from existing data.

In this section, authors need to explain the strengths and limitations of the study. This may help future research to be developed and conducted in the needed direction, in accordance with existing literature and the current findings.

5. Conclusion

This concludes the main findings of your study, which answers the research question or the aim of the study. Future research suggestions may be added at the end of the paragraph.

6. Author Contribution

A.B. and B.C. carried out the experiment. A.B. wrote the manuscript with support from C.D.. D.E. and E.F. collected the XYZ data sample. F.G. and G.H. helped supervise the project. G.H. and H.I. conceived the original idea. H.I. supervised the project.

7. Acknowledgements

You may thank your collaborators, sponsors, and other institutions/parties contributing to your research here.

8. References

A minimum of 15 references is required for one article, 85% of which should be of journal articles from the past 10 years. The citation style used in the Biomedical Journal of Indonesia is **Vancouver superscript**, and DOI identifiers should be appended where applicable.

Please use a citation manager (**Mendeley**) to manage your citations and ensure the citation style is correct. Articles containing references written manually without using a citation manager will be returned to the authors for revision before the review phase.

Citation examples are as follows.

1. Wong SY, Manikam R, Muniandy S. Prevalence and antibiotic susceptibility of bacteria from acute and chronic wounds in Malaysian subjects. *J Infect Dev Ctries*. 2015;9(9):936–44.

If the authors of your reference are more than 6 people, the first 6 names are given, followed by et al.

2. Wang L, Qin W, Zhou Y, Chen B, Zhao X, Zhao H, et al. Transforming growth factor β plays an important role in enhancing wound healing by topical application of Povidone-iodine. *Sci Rep*. 2017; (March): 1–8. doi: 10.1038/s41598-017-01116-5.

Citing from books:

3. Tejiram S, Kavalukas SL, Shupp JW, Barbul A. Wound healing. In: Ågren M, editor. *Wound Healing Biomaterials*. Cambridge: Woodhead Publishing; 2016. p. 3–39.

Citing from internet sources (such as institution websites):

4. Kementerian Kesehatan RI. InfoDatin Situasi Demam Berdarah Dengue. Kemenkes RI [Internet]. 2018; 31(1): 71. Available from: <https://www.kemkes.go.id/download.php?file=download/pusdatin/infodatin/InfoDatin-Situasi-Demam-Berdarah-Dengue.pdf>.