

# How to Download and Install Smoothwall Certificate on PC

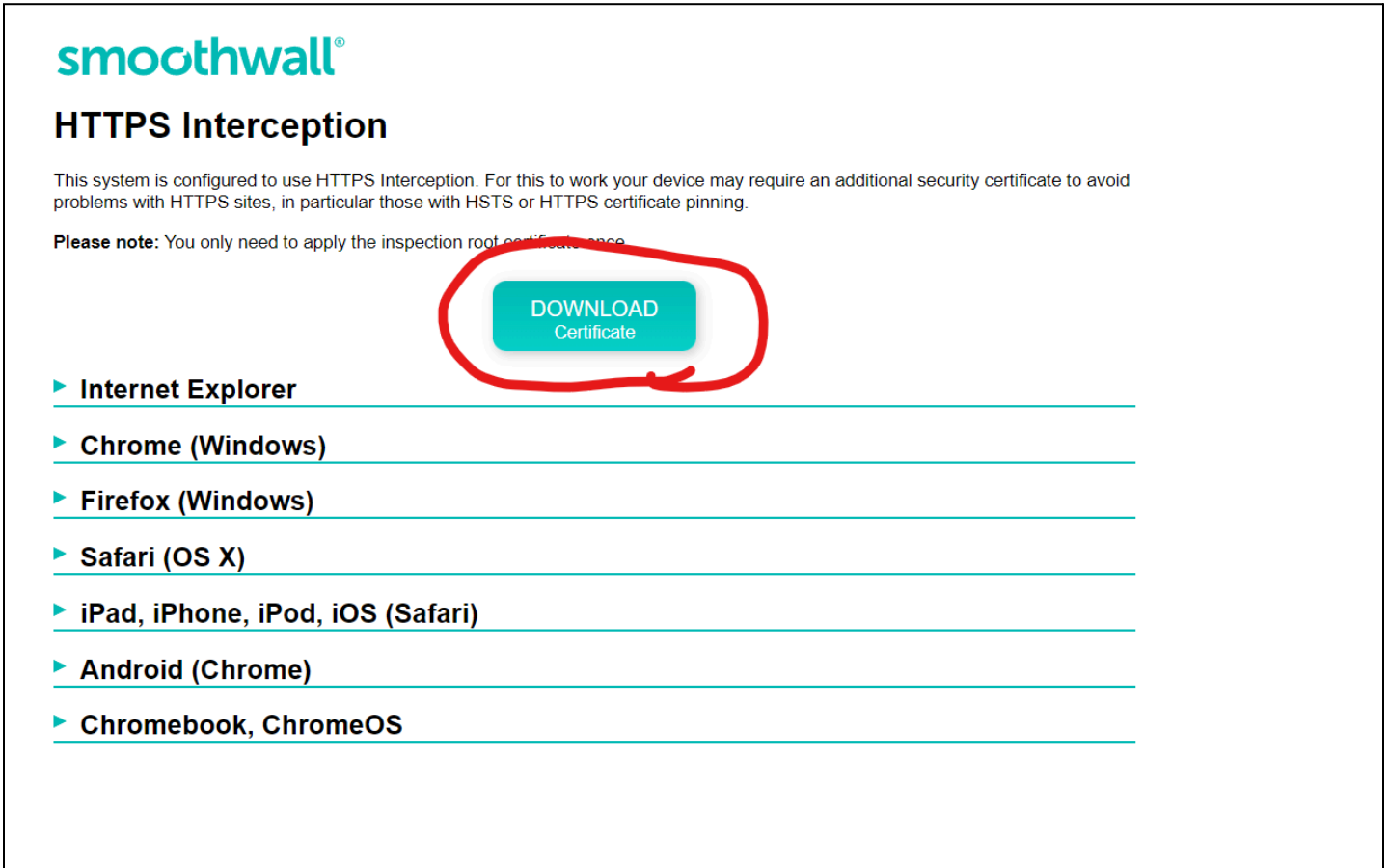
---

The Certificate can be downloaded here:

<http://smoothwall.northclayschools.com/modules/guardian3/mitm/>

## On Individual Devices

1. Go to the [link](#) above.
2. Download the certificate.



The screenshot shows the Smoothwall logo at the top left. Below it is the heading "HTTPS Interception". A paragraph explains that the system is configured for HTTPS interception and that a security certificate is required. A "Please note" section states that the inspection root certificate only needs to be applied once. A red circle highlights a teal button labeled "DOWNLOAD Certificate". Below this, a list of devices with expandable sections is shown, each preceded by a teal arrow icon.

**smoothwall®**

## HTTPS Interception

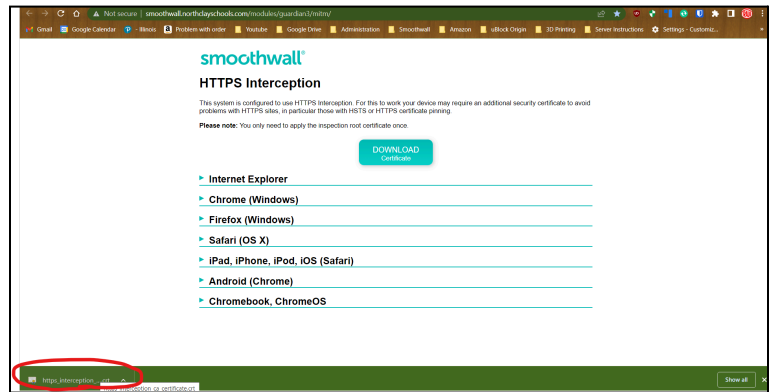
This system is configured to use HTTPS Interception. For this to work your device may require an additional security certificate to avoid problems with HTTPS sites, in particular those with HSTS or HTTPS certificate pinning.

**Please note:** You only need to apply the inspection root certificate once.

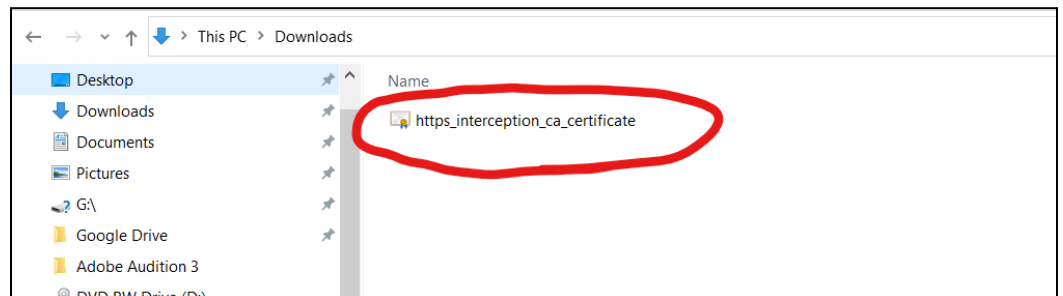
**DOWNLOAD Certificate**

- ▶ Internet Explorer
- ▶ Chrome (Windows)
- ▶ Firefox (Windows)
- ▶ Safari (OS X)
- ▶ iPad, iPhone, iPod, iOS (Safari)
- ▶ Android (Chrome)
- ▶ Chromebook, ChromeOS

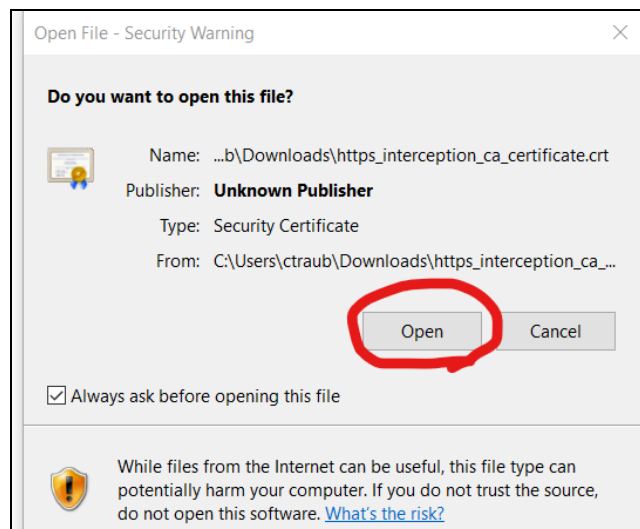
3. Open the certificate.
  - a. If you are in Chrome, the certificate will probably appear in the lower left and you can just click on it.



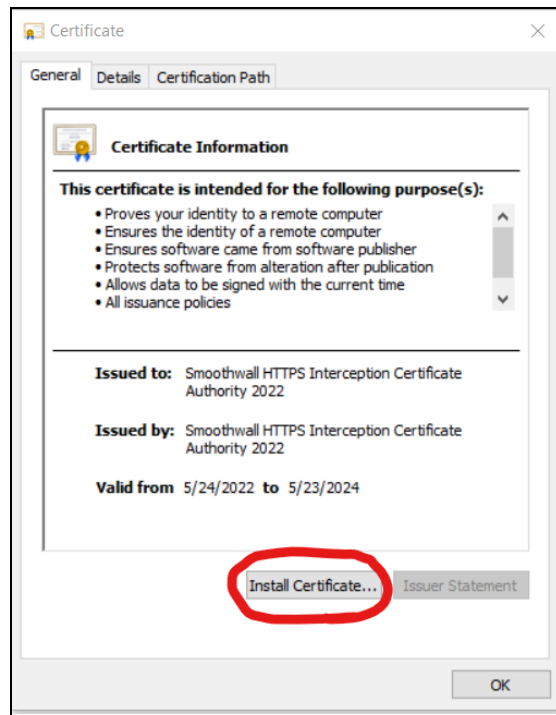
- b. If you are using another browser you will have to open it either by clicking where it downloads within the browser or by going to the folder where it downloaded (typically the “downloads” folder) and opening it there.
- c. Below is what the certificate looks like when you see it in a Windows folder.



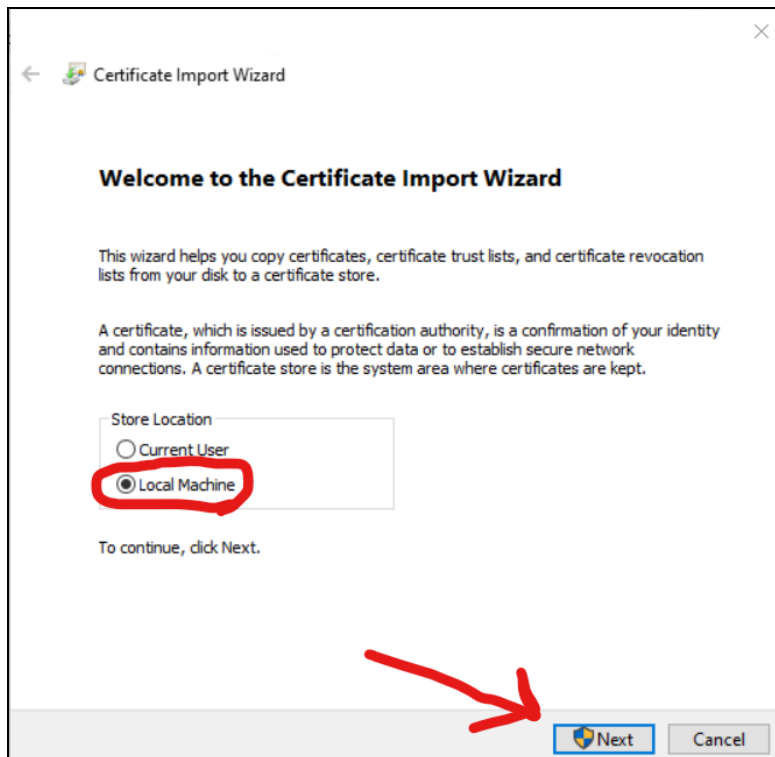
- 4. When you open the certificate it asks: “Do you want to open this file?” Click Open.



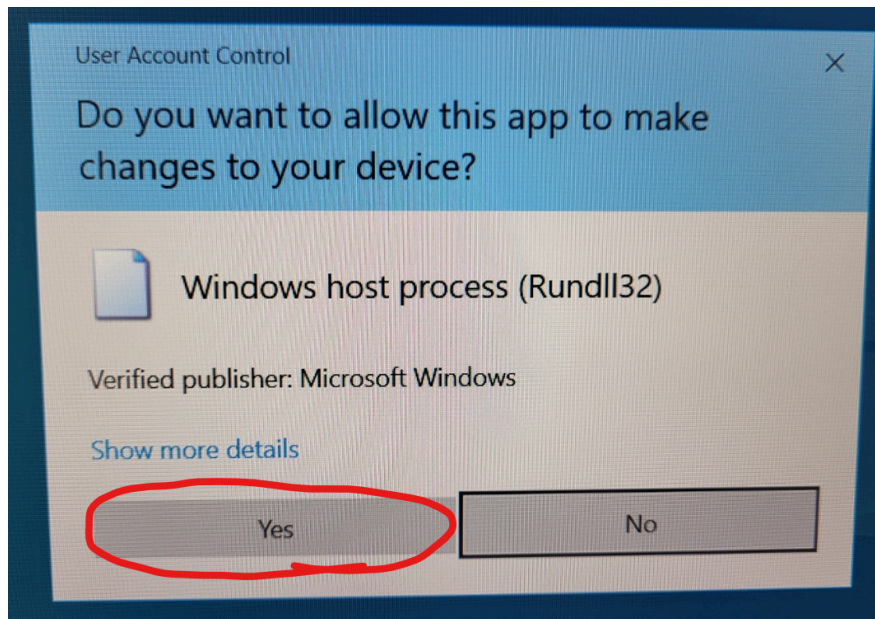
- 5. A box pops up. Click “Install Certificate...”



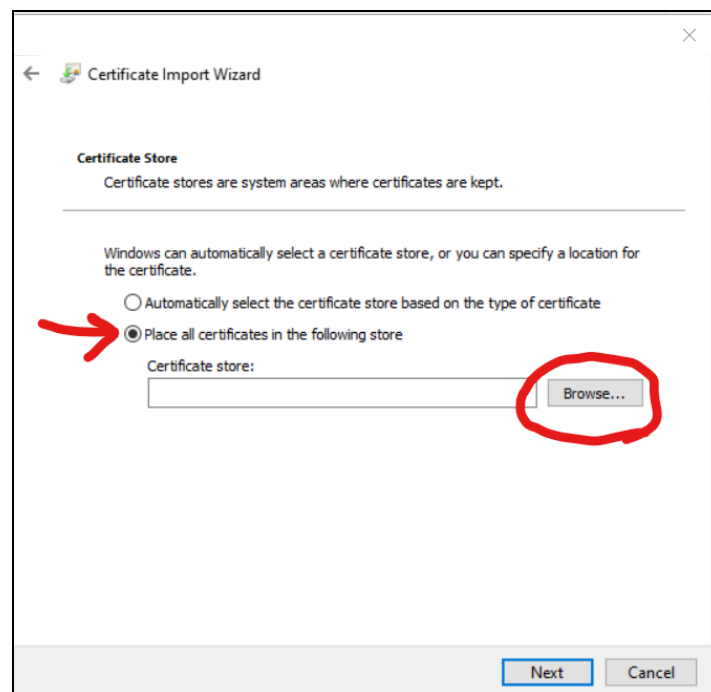
6. Now it lets you choose the Store Location.
- You can either choose "Current User" or "Local Machine". Either one of these will work and if you just have one user account on your PC it's really all the same, but I recommend just choosing "Local Machine" because that will install for all users on the PC.
  - Choose either Current User or Local Machine and click "Next".



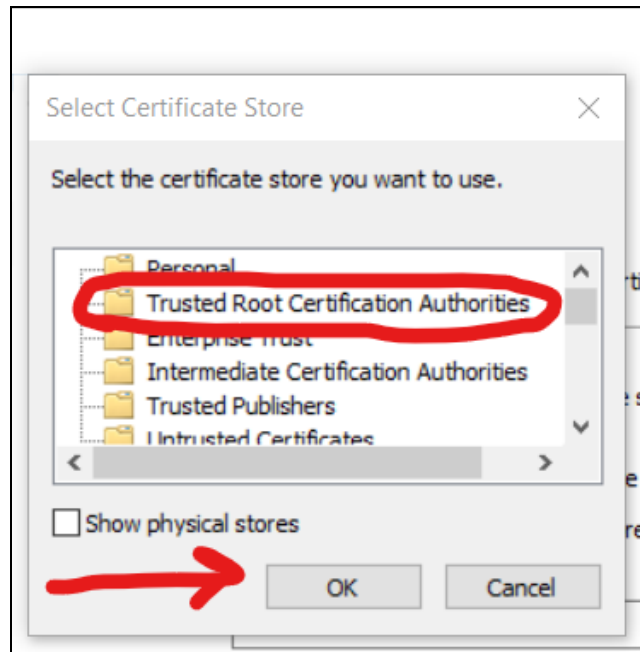
7. A security warning will pop up asking if you want to allow the app to make changes. Click “Yes”.



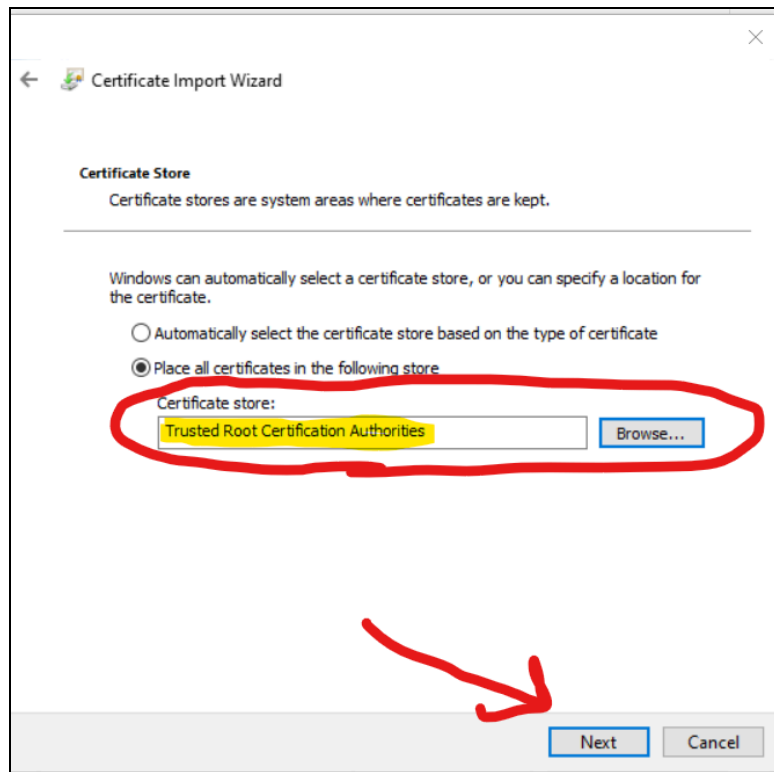
8. Choose “Place all certificates in the following store” and then click “Browse...”



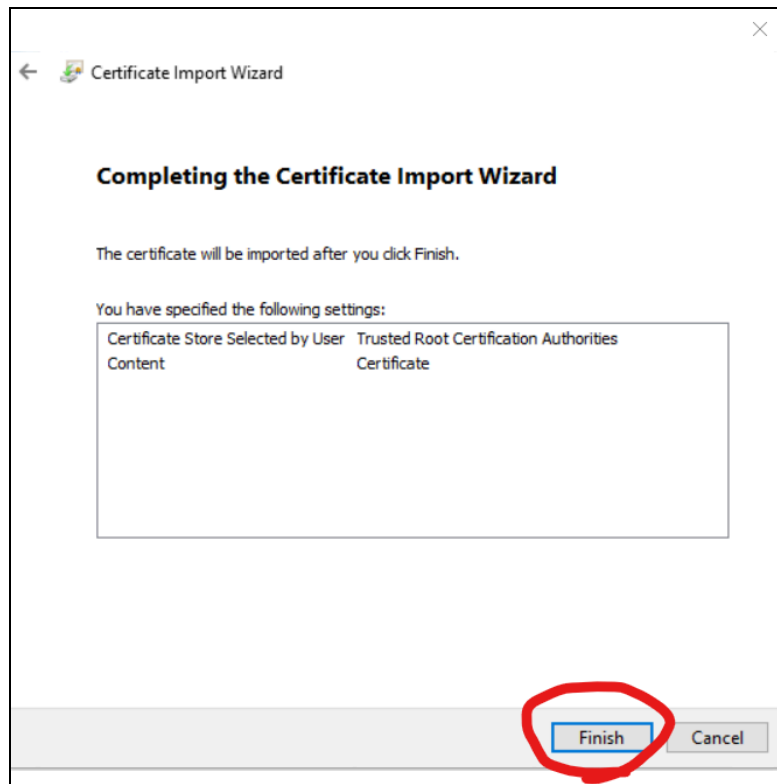
9. Click on “Trusted Root Certification Authorities” and click “OK”.



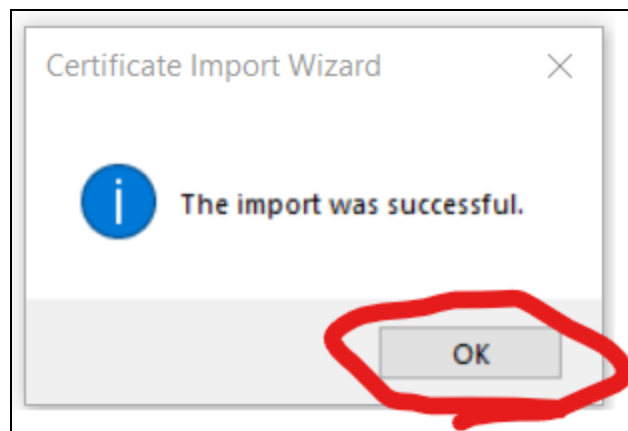
10. Check to see that the Certificate store says “Trusted Root Certification Authorities” and then click “Next”.



11. Click “Finish”.



12. If you are successful, it will say "The import was successful." Click "OK".



13. Then click "OK" again.

