

SONC - Natasha's Web Trail

Rating: Easy

Location: Buck Prairie Sno-Park

Outing Distance: 4.4 miles

Starting Elevation: 5180 feet at lowpoint

Elevation Change: 500 feet

Estimated Tour Duration: 2 1/2 hours

Type: Loop

Driving Distance & Travel Time: from Ashland: 13 miles / from Medford: 32 miles

Driving Donation: short / \$5

Trailhead Location: Sno-Park on Dead Indian Memorial Road

Trail Markings: Nordic (blue diamonds)

Trail Description: roadway 85% / hiking trails 15%

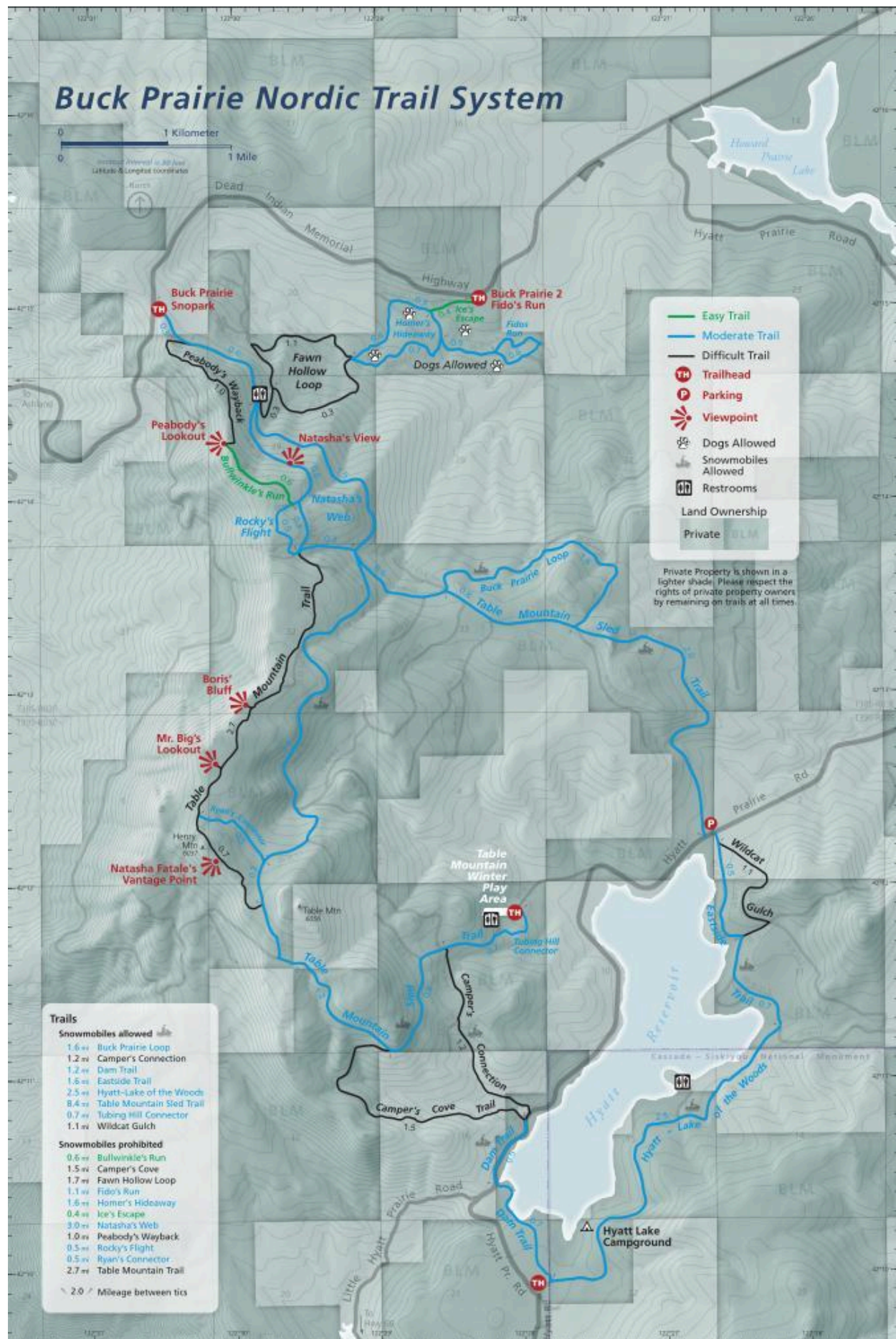
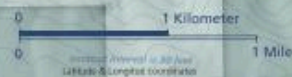
Maps: Bureau of Land Management Winter Recreation ski trails

Course Description: Starting from the Sno-Park you will be on Natasha's Web. Skiing 0.9 mile will bring you to a restroom and a trail junction. Take the right fork 0.8 mile and you will come to a trail map board. Take a left turn at this point and follow the road until you come to a junction sign at 0.3 miles ahead. A left turn at this point will put you on the down hill section of Natasha's Web. Follow the diamonds until you hit a road at the bottom of the meadow. Turn to the left to head for the restroom (1.5 miles) and Sno-Park. (an additional 0.9 miles)

Special Considerations: Icy conditions can be challenging.

file: SONC -**Natasha's Web**

Buck Prairie Nordic Trail System



- Easy Trail
- Moderate Trail
- Difficult Trail
- Trailhead
- Parking
- Viewpoint
- Dogs Allowed
- Snowmobiles Allowed
- Restrooms
- Land Ownership
- Private
- BLM

Private Property is shown in a lighter shade. Please respect the rights of private property owners by remaining on trails at all times.

Trails

- Snowmobiles allowed**
 - 1.6 mi Buck Prairie Loop
 - 1.2 mi Camper's Connection
 - 1.2 mi Dam Trail
 - 1.6 mi Eastside Trail
 - 2.5 mi Hyatt-Lake of the Woods
 - 8.4 mi Table Mountain Sled Trail
 - 0.7 mi Tubing Hill Connector
 - 1.1 mi Wildcat Gulch
- Snowmobiles prohibited**
 - 0.6 mi Bullwinkle's Run
 - 1.5 mi Camper's Cove
 - 1.7 mi Fawn Hollow Loop
 - 1.1 mi Fido's Run
 - 1.6 mi Homer's Hideaway
 - 0.4 mi Ice's Escape
 - 3.0 mi Natasha's Web
 - 1.0 mi Peabody's Wayback
 - 0.5 mi Rocky's Flight
 - 0.5 mi Ryan's Connector
 - 2.7 mi Table Mountain Trail

2.0 / Mileage between ticks