

**Melissa Kline Struhl**

I am the Executive Director of Lookit, a website that lets families participate in cognitive development experiments from home. Lookit hosts experiments for research groups around the world. Previously, I was a graduate student and postdoc in BCS, and am returning to MIT after a stint at the Center for Open Science where I worked on a large-scale project studying the reliability of claims in social science journals.

I am passionate about improving our scientific practices as social scientists, including promoting replication, data sharing, and large collaborations to improve the reliability of what we learn about the minds of young children.



**Yuichi Shoda**

Yuichi Shoda, PhD, is a Professor in the Department of Psychology at the University of Washington. After studying physics at Hokkaido University in Sapporo, Japan, he studied psychology at the University of California, Santa Cruz, and at Stanford University, and received his doctorate at Columbia University. Dr. Shoda's research is aimed at identifying and understanding stable and distinctive within-person patterns of variation in the ever-changing stream, over time and across situations, of an individual's cognition, affect, and behavior.



**Flávio Azevedo**

I am a research associate at Cambridge University's Social Decision-Making Lab (CSDMLab), Cambridge, UK, and at the Saxony's Center for Criminological Research (ZFKS), Chemnitz, Germany. I did my Ph.D. in Political Science at the Graduate School of Cologne University, a German Excellence Center (expected to defend in the second quarter of 2022). I co-founded and direct FORRT —A Framework for Open and Reproducible Research Training— an award-winning interdisciplinary initiative aiming to integrate open scholarship principles into higher education and to advance research transparency, reproducibility, rigor, and ethics through pedagogical reform.



**Ayanna K. Thomas**

Ayanna Kim Thomas is an American scientist, author, and [cognitive researcher](#). Her research centers on the intersection of memory and aging, particularly as those fields relate to brain and [cognitive science](#). She is the editor-in-chief of the journal [Memory & Cognition](#) and President of the Spark Society.



**Aishwarya Iyer**

ABRIR (co-Founder)  
Aishwarya Iyer is an incoming PhD candidate at Christ University (2022) and a Master's graduate from the University of Glasgow (2018). With interests at the intersection of climate change and psychology, she envisions an open science community that is accessible, inclusive and representative.



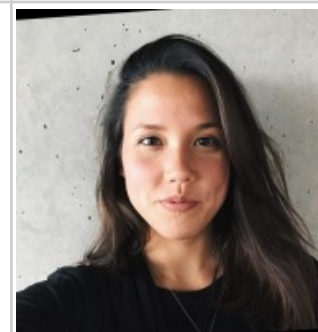
**Angela Gutches**

Angela Gutches is a Professor of Psychology at Brandeis University, with appointments in Neuroscience and the Volen Center for Complex Systems. She is also 2023 Chair of the Psychonomic Society Governing Board. Her research interests include studying the influences of age and culture on memory and social cognition using behavioral and cognitive neuroscience (fMRI; EEG) methods. The courses she teaches at Brandeis include Learning & Memory, Social Neuroscience and Culture, and Cognitive Neuroscience of Aging.



**Anne Lee Steele**

I am the community manager for The Turing Way, based at the Alan Turing Institute, where I am stewarding an open source, community-driven resource for reproducible data science, *The Turing Way*. I'm also an Early Career Fellow at the Internet Society, where I'm investigating low earth orbit (LEO) satellite supply chains, and a co-curator of The Resource Project, which was incubated at Wikimedia Deutschland's Unlock Accelerator.



**Annie Hill**

As Editorial Director, Journals at the American Psychological Association, I oversee the strategic direction, editorial policy, and business operations for a portfolio of 90 journals. I'm particularly interested in equitable open access strategies and EDI in publications.



**Briana Wade**

At the Center for Open Science, leads efforts for improving diversity, equity, and inclusion as a persistent organizational, mission-aligned priority. Responsible for engaging the entire team to continue to cultivate a positive, supportive, and productive organizational culture. Have a leadership role in improving the organization's performance evaluation process and provide managers and staff with training and professional development. Administer all HR functions to include performance management, compensation, compliance, training, employee retention, recruiting, payroll, benefits and records retention.



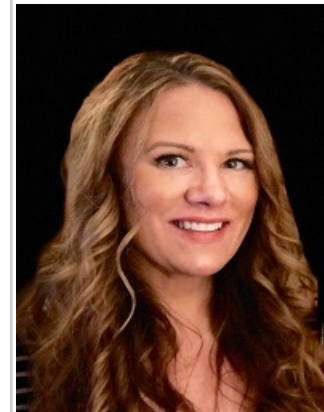
**Chris Erdmann**

Christopher Erdmann is a community advocate, developer, and experimenter in the areas of Open Science and FAIR. Prior to joining the Michael J. Fox Foundation as the Associate Director for Open Science, he was the Assistant Director for Data Leadership at the American Geophysical Union where he was responsible for data stewardship and drove programs on open science and FAIR.



**Dana Basnight-Brown**

Dr. Basnight-Brown is an Associate Professor of Psychology and the Director of the Centre for Cognitive and Developmental Research at USIU-A. She currently serves as an Associate Director for the Psychological Science Accelerator, a globally distributed network of laboratories representing dozens of countries across six continents.



**Sara El-Gebali**

Sara El-Gebali is a project leader for metadata and curation at the SciLifeLab Data Centre, the founder of OpenCIDER (Open Computational Inclusion and Digital Equity Resource), co-founder of FAIRPoints, and an advocate for community building and the promotion of underrepresented groups in STEM fields.



**Greg Tananbaum**

Greg Tananbaum is Director of the Open Research Funders Group (ORFG), a partnership of leading philanthropies committed to the open sharing of research outputs. Collectively, the ORFG members hold assets in excess of \$250 billion, with total annual giving in the \$12 billion range. Members' interests span the entirety of the disciplinary spectrum, including life sciences, physical sciences, social sciences, and the humanities. Additionally, Greg serves as the Secretariat for the National Academies of Sciences, Engineering, and Medicine's Roundtable on Aligning Incentives for Open Scholarship. He has 25+ years' experience in open science and scholarly communications. Greg has advised on projects for the American Heart Association; the Chan Zuckerberg Initiative; Microsoft Research; the American Institute of Physics; and the University of California, among other prominent organizations. Greg previously served as President of The Berkeley Electronic Press (bepress), as well as Director of Product Marketing for EndNote. He holds a Master's Degree from the London School of Economics and a B.A. from Yale University.

**Heidi Baumgartner**

ManyBabies executive director, Heidi is a behavioral scientist with 14+ years of psychology and neuroscience research experience, with particular expertise in project design/management and developing innovative methods for visualizing and analyzing data.

**Katie Corker**

Katie is an associate professor of psychology at Grand Valley State University in Michigan (USA). Since helping to found the Society for the Improvement for Psychological Science (SIPS) in 2016, she now serves as executive officer of SIPS. She is also the current chair of the APA open science and methodology expert panel, which works to spread open science practices within APA journals, as well as providing resources to editors, authors, and reviewers as they implement policies and practices relevant to open science. The overarching theme of her work is building communities of practice to advance open scholarship across diverse communities and research disciplines.



**Kristi Multhaup**

Kristi's main research interest is in cognitive aging, particularly the mechanisms that are responsible for memory changes and, in some cases, the lack of memory changes in healthy older adults. Specialty areas include source memory (e.g., where did you learn information, a friend, a TV show, Facebook), autobiographical memory, and inhibitory control (e.g., what we use to name the color of ink in RED "black"). Kristi is the President of APA D3.

**Lisa Levinson**

My research interests are in natural language semantics and psycholinguistics, focusing on verbs. I conduct behavioral psycholinguistic experiments with methodologies such as self-paced reading and maze tasks, as well as surveys of linguistic and semantic judgments. I also study semantic variation using corpora and datasets such as the Twitter Decahose, to better understand how words have developed diverging meanings in different communities, age groups, or regions.



**Matt Goldrick**

Matt is interested in the cognitive science of language. His research utilizes behavioral experiments as well as formal models to build theories of the cognitive and neural mechanisms underlying linguistic knowledge and processing in mono- and multi-lingual speakers. He is also on the Organizing Committee for Reviewer Zero – which reimagines the peer review processes in the world of diverse scientists.

**Mia Bynum**

Senior Director for Science Equity, Diversity, & Inclusion at the American Psychological Association



<b>Michael R Dougherty</b>	<p>My research interests are in cognitive psychology, but most of my current work has been squarely focused on research evaluation, bibliometrics, and policy development, in particular policies for promotion and tenure as well as merit review. I currently serve as one of the University of Maryland's representatives on the Higher Education Leadership in Open Science (HELIOS), and have participated in similar efforts organized by the Counsel of Graduate Studies, and by the National Institutes for Health, and serve on our campus committee charged with creating UMD's equitable access publishing policy and advancing equitable access to research. My scientific research focuses complex cognition, addressing questions such as:</p> <p>How do people generate hypotheses and make judgments?          What processes are modified through working memory (WM) training and do they generalize?          Can metacognitive judgments be used to modify people's learning behavior?          How can the process of scientific discovery be improved?</p> <p>APS - COGDOP association</p>	
<b>Mike Frank</b>	<p>Michael C. Frank is David and Lucile Packard Professor of Human Biology at Stanford University and Director of the Symbolic Systems Program. He received his PhD from MIT in Brain and Cognitive Sciences in 2010. He studies language use and language learning, focusing especially on early word learning. He is the founder of the ManyBabies Consortium, a collaborative replication network for infancy research, and has led open-data projects including Wordbank and MetaLab. He was a Jacobs Foundation Fellow and has received the Troland Award from the National Academy of Sciences, the FABBS Early Career Impact Award, and the Marr Prize and Glushko Dissertation Prize from the Cognitive Science Society. He served as Chair of the Governing Board of the Cognitive Science Society and has edited for journals including Cognition and Child Development.</p>	
<b>Karen J. Mitchell</b>	<p>I have broad interests in human memory and cognition, including cognitive neuroscience. My research focuses especially on: source monitoring (the processes by which we attribute mental experiences to sources) and the phenomenal experience of remembering; specification of the component cognitive processes and neural substrates of episodic memory, especially those involved in the binding of attributes into complex memories and in cognitive control; application of theories of human memory to real-world problems, including eyewitness suggestibility and interpersonal reality monitoring (how we judge the veracity of other people's memory accounts). I am also interested in the impact of both emotion and aging on cognition, and I collaborate with clinicians in studies looking at cognitive disruptions in psychopathology (depression, schizophrenia, PTSD). I also enjoy collaborating with students on cognitive topics of mutual interest.</p> <p>SARMAC Publication Committee</p>	

**Priya Silverstein**

I am a consultant Research Scientist for the Center for Open Science and a Community Manager for the Journal Editors Discussion Interface (JEDI). As well as this, I continue to work on my ongoing research projects in [predominantly] developmental psychology, and to train researchers at all career stages in open and reproducible science. I have coauthored a paper on how to get started in open science as a graduate student and a guide on open research across disciplines.

SIPS Executive Committee

**Robert Gropp**

CEO/Executive Director at Association for Psychological Science

**Sakshi Ghai**





Sakshi Ghai is a third-year doctoral student in Psychology at the University of Cambridge with affiliations to the Department of Psychology and the MRC Cognition and Brain Sciences Unit. Her research focuses on the cognitive and social effects of technology, specifically in the context of gender and the Global South. Sakshi is hoping to diversify behavioral science.

**Sarah Brown-Schmidt**

My research focuses on the mechanisms by which people produce and understand utterances during the most basic form of language use: interactive conversation. I am currently pursuing three questions in related lines of research: Common ground and perspective-taking; Memory and language; Message formulation.

President, Society for Human Sentence Processing; Editor in Chief, JEP: General



<b>Sarah Creem-Regehr</b>	<p>My research examines how humans perceive, learn, and navigate spaces in natural, virtual, and visually impoverished environments. My research takes an interdisciplinary approach, combining the study of space perception and spatial cognition with applications in visualization and virtual environments. Our work in computer graphics and virtual environments has contributed to solutions to improve the utility of virtual environment applications by studying human perception and performance.</p> <p>Editor, Cognitive Research: Principles and Implications</p>	
<b>Sarah Shomstein</b>	<p>My research is concerned with understanding the psychological and neural mechanisms underlying attentional selection, and focuses on two questions in particular. The first question concerns the representations, or units, from which selection occurs and this line of research focuses primarily on the behavioral and neural correlates of spatial and object-based selection as human observers analyze incoming information. The second question concerns the computations involved in the selection per se and this research investigates the neural source of the attentional signal and the impact this signal exerts on the neural trace of the sensory stimulus before and after it has been attentionally selected.</p> <p>Editor, Attention, Perception and Psychophysics</p>	
<b>Sha Raye Horn</b>	<p>Senior Science Programs Associate at the American Psychological Association. Sha Raye is a senior-level psychological science associate with a demonstrated history of specialty in minoritized children, adolescents and their families. Sha Raye has strong research interests in intersectionality, mechanisms for resiliency in underprivileged and at risk youth, and trauma.</p>	
<b>Shandol Hoover</b>	<p>Science Program Officer for the American Psychological Association. My strengths lie in program development, project management, relationship building, professional development, training, and college student development. I bring professional experience with large non-profit organizations and over 20 years of experience in higher education.</p>	



**Zachary Loomas**

Center for Open Science

