

CSF FLOW Brain WO Protocol

Scan notes:

This protocol requires the use of gated pulse box for CSF Flow imaging (gating source set to “Retro”). Must have Radiologist live supervise case for QA purposes.

Revised 11/11/2021

Charge as: Brain WO IV CONTRAST

Scanner: 1.5T or 3T

Coil: Head Coil/Flex Coil (flex coil may be needed if anterior head coil cannot clamp)

Plane	Weighting	Slice	Gap	FAT SAT	Scan Range
SAG	T2_ciss3d	.6mm	.12mm	None	Midline brain coverage/parallel to midline of brain.
SAG	T2	4mm	0mm	None	Whole brain/ parallel to midline of brain.
SAG (in plane)	Flow_csf_venc 5	5mm	1mm	None	Cerebral Aqueduct /parallel to Cerebral Aqueduct (identify duct on SAG3d and copy image position)
SAG (in plane)	Flow_csf_venc 12	5mm	1mm	None	Cerebral Aqueduct /parallel to Cerebral Aqueduct (identify duct on SAG3d and copy image position)

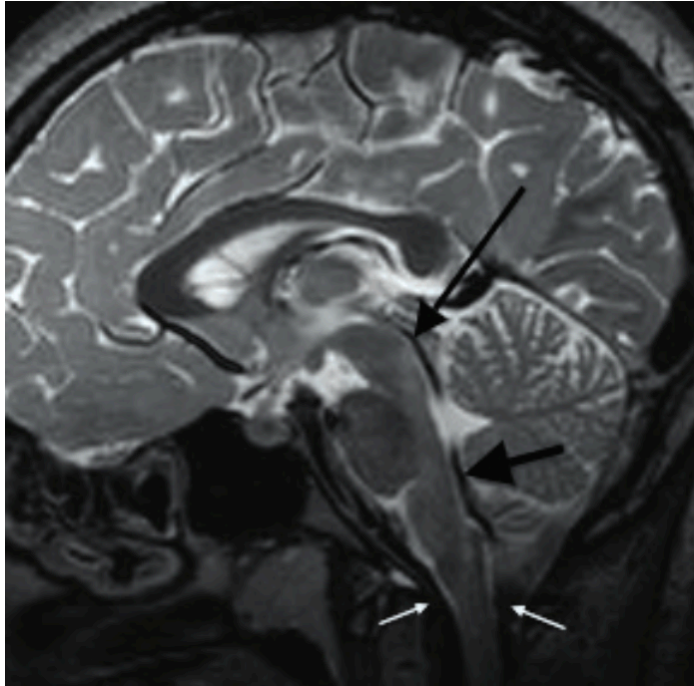
*****May require “through plane” flow imaging (perpendicular to cerebral aqueduct)*****

Foramen Magnum Optional:

Plane	Weighting	Slice	Gap	FAT SAT	Scan Range
AXIAL (through plane)	Flow_csf_venc 5	5mm	1mm	None	Cerebral Aqueduct /perpendicular to Cerebral Aqueduct at foramen magnum level

AXIAL (through plane)	Flow_csf_venc 12	5mm	1mm	None	Cerebral Aqueduct /perpendicular to Cerebral Aqueduct at foramen magnum level
------------------------------	---------------------	-----	-----	------	---

SAG T2 Cerebral Aqueduct Image (in plane view):



Red lines = Through Plane Views:

