



Hambright Happenings “Family Edition”

Early Dismissal/Change of Dismissal/Pick-Up Form



The Hambright Office is asking parents/guardians to please use this [form](#).

**Salida Temprana/Cambio de Salida/Procedimientos para
Recoger**

La Oficina de Hambright solicita a los padres/tutores que utilicen esta [Solicitud](#)

[Resources for You](#)
[Penn Manor Athletics](#)
[PM Community Announcements](#)
Learn more about [The LOFT](#)
[Hambright website](#)

Sept. 1, 2025

**It was great to welcome back our
students!**



~~~~~  
~~~~~

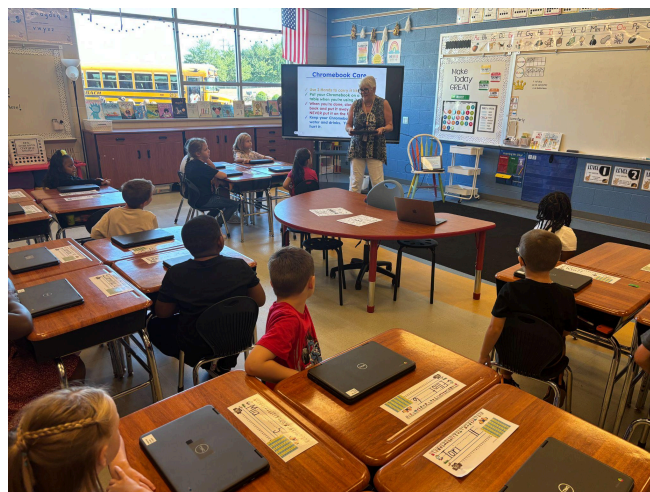
Featuring...Grade 1

Throughout the first week of school, first-grade students met as a grade level to discuss what it means to leave their M.A.R.K. throughout Hambright. We also took the time to get to know one another, learn about what makes us all unique, and build a strong classroom community. First grade's incredible efforts were celebrated at the end of the week with an all-school assembly. We are so proud of how hard this group has worked and are looking forward to a wonderful school year!





Miss Suter, Miss Ross, Mrs. Adams, and Mrs. Emerson



Reviewing letter/letter sounds on our sentence strips ~~~~~ Mrs. Keller (AKA The Google Goddess)
reviews
computer care and safety

~~~~~  
~~~~~

At our first ALL SCHOOL Opening Assembly, DJ Shope and Miss Miller challenged all students to leave their M.A.R.K. See the School-Wide Behavior Plan at the bottom to review the expectations for students in all areas of the building. If students fill the 100 MARK Chart in the office two times by October 15th we will celebrate with a DANCE PARTY!



~~~~~  
~~~~~

Academic Allies



Hello! Hambright Academic Support Team (AST) has kicked off the school year with school wide DIBELS reading assessments K-6th grades.

AST goes where there's a need! Stay tuned for monthly updates and activities from AST.

Team: Megan Peart, Amy Bittenbender, Amy Flores, Kathy Rowley, and Ellen Finger.

~~~~~  
~~~~~

From Mr. Hite, Physical Education Teacher

Dear Hambright Families,

My name is Mr. Hite, I will be teaching Physical Education for the 2025-2026 school year and I am excited for the school year to begin.

This year, students in grades 1-6 will participate in a four-day schedule (Days A, B, C, and D). Each homeroom teacher will be assigned a specific Cycle Day for Physical Education this year, which will remain the same for the entire 2025-26 school year.

The Elementary Physical Education Department has created a list of recommendations to ensure that all students can be successful and enjoy their P.E. experience as much as possible. Please help your student(s) to remember the following recommendations when they are participating in Physical Education this school year:

- Wear sneakers (no crocs) and comfortable clothing for P.E.
- Bring extra shoes for after PE (*they may get wet/muddy outside*).
- Bring extra socks for after PE (*they may get wet/muddy outside*).
- Wear outer layers appropriate for the weather conditions.
- Limit jewelry.

I am very excited to work with your student this year! I look forward to meeting all the new faces.

If you have any further questions, please contact me directly at the e-mail address, below.

Sincerely,

Mr. Hite

Health & Physical Education Teacher
Hambricht Elementary
timothy.hite@pennmanor.net

~~~~~  
~~~~~

Upcoming Dates

Mark your calendar with all PM dates. Here is the 25-26 [PMSD Calendar](#).

Join the [Hambricht Community Google Calendar](#)

September 1 - No School

September 3 - Rita's Night, 4-6pm

September 16 - PTO Meeting (Hambricht Library), 6:30pm

September 19 - Early Dismissal at 1:30 pm, No AM Kindergarten

September 24 - Picture Day

October 10 - No School
October 13 - No School
October 29 - End of Marking Period 1
October 31 - No School
November 13 - Grades posted to Sapphire portal
November 17-21 - Interpreter/Parent/Teacher Conferences
November 24-25 - Parent/Teacher Conferences
November 26-December 1 - No School

~~~~~  
~~~~~

From Your PTO



Hambright School Spirit Store

We're thrilled to announce our new partnership with a local Millersville, PA business called **Berry Good Embroidery**. The owner is a proud Hambright graduate, and we're excited to support local talent while offering great spirit wear options for our school community.

Visit the Hambright Spirit Store here: [Hambright | Berry Good Embroidery](#)

Password: COMETS

All orders are shipped directly to homes. All product and shipping questions can be directed to Berry Good Embroidery.



2025-2026 Hambright PTO Board:

- Tara Winters, Co-President
- Alyssa Martin, Co-President
- Carrie Keener, Vice President
- Londa Windlebleck, Treasurer
- Krissy Koenig, Secretary

HAMBRIGHT ELEMENTARY SCHOOL

RITA'S NIGHT!

BEAT THE HEAT WITH A RITA'S TREAT
TO START THE 2025-2026 SCHOOL YEAR!

LOCATION: RITA'S ON COLUMBIA AVE/REDWOOD DRIVE

DATE: SEPTEMBER 3RD, 2025

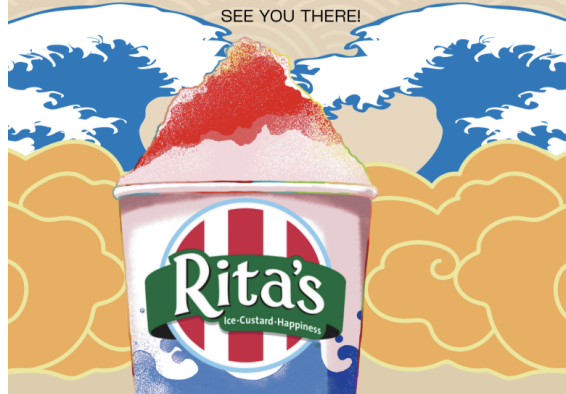
TIME: 4-6PM

EVERY CURRENT HAMBRIGHT STUDENT WILL RECEIVE AN
ITALIAN ICE (PAID FOR BY THE PTO).

FAMILY MEMBERS MAY PURCHASE THEIR OWN TREATS.

TREATS WILL BE SERVED BY OUR VERY OWN HAMBRIGHT
TEACHERS!

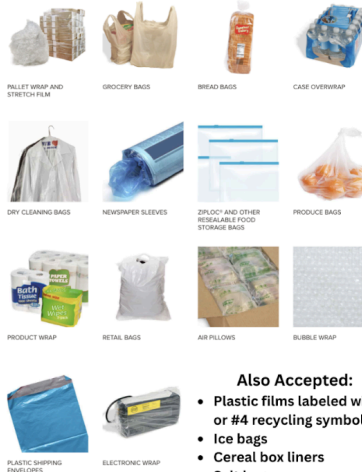
RAIN OR SHINE!
SEE YOU THERE!



WE NEED YOUR PLASTIC BAGS!

Hambright is
collecting plastic
bags.
We are looking to
gather 1,000
pounds of plastic
bags to earn a fourth
and final bench for
our garden.
Please be sure the
bags are dry and
cleaned of food
particles. Students
can place plastic
bags in the white
bins in the lobby.

All plastic must be clean, dry and free of food residue.



Also Accepted:

- Plastic films labeled with #2 or #4 recycling symbol
- Ice bags
- Cereal box liners
- Salt bags
- Wood pellet bags

Contact amy.bittenbender@pennmanor.net with any questions.

~~~~~  
~~~~~

PMHS - Home football game attendance guidelines issued for upcoming season

~~~~~  
~~~~~

LOST AND FOUND

Please have your child check the Lost and Found in the cafeteria for lost or misplaced items. We will be donating items from the Lost and Found at the end of each Marking Period.

Aug 15, 2025

Dear Parents and Guardians,

Welcome back to another exciting school year! The entire staff is thrilled to greet our returning students and to extend a very warm welcome to all our new families. We hope you had a wonderful and restful break, filled with fun and relaxation, and that everyone is feeling refreshed and ready to learn.

We are committed to creating an engaging and supportive learning environment where every child can reach their full potential. A strong partnership between home and school is essential for student success, and we look forward to working closely with you throughout the year.

We have many exciting events planned, including Rita's Night, a Basketball Assembly, and more! We will keep you updated on all events and important school news through our school website and Hambright Parent Update emails. Please be sure to stay connected to ensure you don't miss any key information or reminders.

We can't wait to see you all on August 25th!

Sincerely,

Eric Howe, Principal Kelli Eachus, Assistant Principal

~~~~~  
~~~~~

Drop off and Pick Up Procedures for the Car Rider Line

If you are dropping your child off before school or picking him/her up after school, please see the map below. This is our pick up and drop off route. Please do not block cars in the Manor Middle School back parking lot while waiting in line.

At no time should students be dropped off in the parking lots and use the crosswalks.

The left/inside lane closest to the building is for drop off after 8:50am. The right/outside lane is for students arriving early for breakfast. This lane can begin to unload at 8:35am. Please do not unload early, as we do not have staff available to supervise students until 8:35am.

Please be alert to students exiting their cars. Thank you for assisting in keeping our students safe.

If you are picking up your student(s) early or dropping off late, please come to the Main Office to speak with one of our secretaries. See NEW ENTRY PROCEDURES BELOW.

If the car line during pick up goes out to Charlestown Rd., please use Ironstone Ridge Rd. to circle around to the front of Manor Middle School and over to Hambright.



NEW Entry Procedures for ALL Penn Manor Buildings

For the safety of our students and staff, we are implementing new procedures for building entry, effective immediately. We appreciate your cooperation and patience as we work to provide a secure environment for everyone.

When Arriving at School:

1. The main entrance door will be locked. Please ring the doorbell.
2. Mrs. Jurgaitis or Mrs. Ortiz will ask the reason for your visit.
3. After stating the reason for the visit, they will admit you into the lobby.

For Student Pick-Up:

We will continue our policy of checking ID to verify all adults picking up children. Please have your identification ready.

If you do not have a placard in the Car Rider Line, we will ask to confirm your ID as well.

~~~~~  
~~~~~

Upcoming Dates

Mark your calendar with all PM dates. Here is the 25-26 [PMSD Calendar](#).

Join the [Hambright Community Google Calendar](#)

August 19 - Kindergarten and New Student Orientation, 5:00pm
August 25 - First Day of School
August 27 - Back to School Night, 4-6pm
August 28 - Early Dismissal, No PM Kindergarten
August 29 - No School
September 1 - No School
September 3 - Rita's Night, 4-6pm
September 16 - PTO Meeting (Hambright Library), 6:30pm
September 19 - Early Dismissal at 1:30 pm, No AM Kindergarten
September 24 - Picture Day

~~~~~  
~~~~~

From Your PTO

We look forward to meeting you at Kindergarten Orientation and Back to School Night. Our first PTO Meeting will be on 8/27/2024 "drop in" 4-6pm .



Hambright School Spirit Store

We're thrilled to announce our new partnership with a local Millersville, PA business called **Berry Good Embroidery**. The owner is a proud Hambright graduate, and we're excited to support local talent while offering great spirit wear options for our school community.

Visit the Hambright Spirit Store here: [Hambright | Berry Good Embroidery](#)
All orders are shipped directly to homes. All product and shipping questions can be directed to Berry Good Embroidery.



2025–2026 Hambright PTO Board:

- Tara Winters, Co-President
- Alyssa Martin, Co-President
- Carrie Keener, Vice President
- Linda Windlebleck, Treasurer
- Krissy Koenig, Secretary

The new school year is here!

We need your help to stock the teacher's lounge and provide a welcoming luncheon on August 20th! See the Sign Up Genius to register to support our Hambright staff as they head back to school! 📚

All donations must be dropped off at the front office by 10 AM on August 20th.

Sign up [here](#) to donate items for the "Fall Fill Up."

HAMBRIGHT ELEMENTARY SCHOOL

RITA'S NIGHT!

BEAT THE HEAT WITH A RITA'S TREAT
TO START THE 2025-2026 SCHOOL YEAR!

LOCATION: RITA'S ON COLUMBIA AVE/REDWOOD DRIVE

DATE: SEPTEMBER 3RD, 2025

TIME: 4-6PM

EVERY CURRENT HAMBRIGHT STUDENT WILL RECEIVE AN
ITALIAN ICE (PAID FOR BY THE PTO).

FAMILY MEMBERS MAY PURCHASE THEIR OWN TREATS.

TREATS WILL BE SERVED BY OUR VERY OWN HAMBRIGHT
TEACHERS!

RAIN OR SHINE!
SEE YOU THERE!



~~~~~  
~~~~~

Title I: [Parent Right to Know](#)

[Parent Right to Know \(Spanish\)](#)

As Required by The Elementary and Secondary Education Assistance (ESEA) [Section 1112(e)(1)(A)] and the Every Student Succeeds Act [Section 1112(e)(1)(A)]

Dear Parent(s)/Legal Guardian(s):

Your child attends a Penn Manor school that receives Federal Title I funds to assist students in meeting state achievement standards. Throughout the school year, we will be providing you with important information about this law and your child's education. This letter lets you know about your right to request information about the qualifications of the classroom staff working with your child.

~~~~~  
~~~~~

LOST AND FOUND

Please have your child check the Lost and Found in the cafeteria for lost or misplaced items. We will be donating items from the Lost and Found at the end of each Marking Period.

~~~~~  
~~~~~

School-Wide Behavior Plan

Hambright is continuing our school wide behavioral system this year-
PBIS (Positive Behavioral Interventions and Supports)

- Students will be acknowledged for positive behaviors.
- Students will be asked to fill out a "MARK" sheet when an unexpected behavior occurs.
 1. First Mark Sheet - Signature from home
 2. Second Mark Sheet - A teacher will communicate to an adult in the student's home.
 3. Third Mark Sheet - The student will not be able to attend the grade level/school wide monthly incentive.

*If you have any questions, please contact your child's teacher.

Here is the matrix that we use to review expectations for our students.
You can also talk about how your child can leave their MARK at home.

Leaders leave their MARK

	Hallway Voice level 0-1	Cafeteria Voice level 0-2	Classroom Voice level 0-3	Recess Voice level 0-4	Bus Voice level 0-2	Bathroom Voice level 0-1
M Make Good Choices	-Walk quietly -Stay to the right -Go straight to your destination	-Clean up your area -Get all the things you need the first time through the line	-Be prepared with all your materials -Use materials appropriately -Keep your workspace neat and organized	-Play with and use equipment safely -Line up when your class is called -Stay in approved areas -Use appropriate language	-Stay seated while the bus is moving -Use appropriate language -Be ready for your stop	-Keep the bathroom clean by flushing and throwing all trash in the trash cans - Use only 1 or 2 paper towels -Wash your hands with soap and water
A Act Kindly	-Keep hands by your side -Stay in your spot in line	-Say "please" and "thank you" -Use your table manners	-Cooperate with others -Speak nicely to and about others	-Invite others to play with you -Treat others the way you want to be treated	-Keep your hands and feet to yourself -Use kind words with everyone	-Wait your turn in line -Use kind words with everyone
R Respect Others and Yourself	-Silently smile and wave -Listen to all adults in the hallway -Stay quiet/calm in the hallway when waiting for specials	-Follow directions when given -Listen to adults on duty -Keep your hands, feet, and food to yourself -Respect the meal choices of others	-Be accepting of the ideas of others -Follow classroom expectations	-Follow playground / indoor recess expectations -Listen to adults on duty -Enter and exit the building quietly	-Listen to the bus driver -Respect other people's belongings and space	-Be aware of the privacy of others -Keep your hands, eyes, and feet to yourself -Keep the stalls and walls clean
K Keep Being Your Best	-Keep the hallway clean -Be a role model for others	-Wait your turn in line -Check your area before leaving -Make healthy choices	-Give your best effort -Be an active listener -Accept responsibility	-Work to solve problems -Stay quiet in line waiting for your teacher	-Report any incidents -Be a good example for others	-Report any messes in the bathroom -Return promptly to class