

Title of article: in Spanish and English. Centered, in bold, in capital letters, Times New Roman 14, double space.

EVALUACIÓN DE LAS CONCENTRACIONES DE *ESCHERICHIA COLI* EN *CRASSOSTREA GIGAS*...

EVALUATION OF *ESCHERICHIA COLI* CONCENTRATIONS IN *CRASSOSTREA GIGAS* ...

Leave single space between the title and the authors.

Luis A. Vega Corrales^{1*} y *Carolina Marín Vindas*¹

Author(s): full name in italics, Times New Roman 11, double space, justified.

¹Estación de Biología Marina Juan Bertoglia Richards, Universidad Nacional, Costa Rica.

luis.vega.corrales@una.cr* ORCID: <http://orcid>

Indicate all of the authors' institutional affiliation, place of work or physical address. Use numbered superscripts.

Include e-mail address of corresponding author. Marked with an Asterisk and **ORCID identifier**

Leave a single space between the author(s) and the abstract.

Titles of section (Abstract, Introduction, Materials and Methods, Results, Discussion, Acknowledgments, Bibliography): left margin, in bold, in capital letters, Times New Roman 14.

RESUMEN

Costa Rica no cuenta con referencias sobre la calidad sanitaria de las zonas de cultivo de *Crassostrea gigas* y esto puede representar un riesgo para la salud pública...

Palabras claves: Contaminación marina, maricultura, *Escherichia coli*, *Crassostrea gigas*, Costa Rica.

Keywords subtitle: in bold, Times New Roman 11.

Minimum and maximum 5 keywords, as required by databases.

Abstract: in Spanish and English. Times New Roman 10, justified, single space. Maximum length: 250 words.

ABSTRACT

Costa Rica does not have references on health quality of harvesting zones of *Crassostrea gigas*, which can pose a potential public health risk...

Keywords: Marine pollution, mariculture, *Escherichia coli*, *Crassostrea gigas*, Costa Rica.

Leave a space between section titles and the text.

INTRODUCCIÓN

Text: Times New Roman 12, double space, justified. Both lowercase and capital letters must have accents if in Spanish. Each paragraph must have a 5 character indentation. There should be no spaces between paragraphs within the same section.

Los ecosistemas marinos son vulnerables a la contaminación antropogénica. Según Halpern *et al.* (2008), no existen zonas marino costeras que no estén impactadas por la influencia humana...

Citation for one author.

...Estudios recientes han demostrado que las concentraciones de *E. coli* en las zonas de cultivo de moluscos bivalvos dependen, entre muchos otros factores, de las condiciones climatológicas y estacionales del área (Peterson, 1960; CITES, 2011; Campos *et al.* 2013b; Derolez *et al.* 2013; Lee & Silk, 2013; Mignani *et al.*

Citation for two author publications.

Citation for different publications of the same author and year.

Citation for more than 2 author publications.

MATERIALES Y MÉTODOS

Se evaluó la contaminación por *E. coli* en las zonas de cultivo de ostras de Punta Cuchillo (9°49' 48" N y 84°52' 48" O) y de Punta Morales (10°4' 84" N y 84°58' 37" O), ubicadas en el Golfo de Nicoya, Costa Rica (Fig. 1).

Tables and figures must be delivered separately.

Para la fase presuntiva se inoculó cada serie de cinco tubos de Lauryl Tryptose Broth (BD®) con 10, 1 y 0.1 mL de la muestra de agua... Para las muestras de ostras se homogeneizaro en 225 mL de Buffered Peptone Water (BD®). A partir de esta mezcla se prepararon las diluciones 1:100 y 1:1 000. De cada dilución se inocularon 5 tubos de Lauryl Tryptose Broth.

Use a decimal point rather than a comma.

Thousands should be indicated with a comma.

The abbreviations used should conform to the international system of units (m, km, g, mg, %, PSU, °C).

REFERENCES

Use "&".

Use letters to differentiate publications by the same author and year.

Campos, C. J. A., Acornley, R., Morgan, O. C. & Kershaw, S. (2013a). Trends in the levels of

Escherichia coli in commercially harvested bivalv

1999-2008.

Mar.

Pollut.

Bu

Periodicals: journal volume in italics and issue in parentheses. There should be no space between the volume and the issue. Initial and final pages separated with a hyphen.

<https://doi.org/10.1016/j.marpolbul.2012.11.030>

Campos, C. J. A., Kershaw, S. R. & Lee, R. J. (2013b). Environmental influences on faecal

indicator organisms in coastal waters ~~and their accumulation in bivalve shellfish~~

Estuaries Coasts, 36(4), 834-853. <https://doi.org/10.1007/s12237-013-9599-y>

Non-periodical publications: title of book in italics.

Clesceri, L. S., Greenberg, A. E. & Trussell, R. R. (1989). *Standard methods for the*

examination of water and wastewater (17th ed.). EE. UU.: American Public Health

Association, American Water Works Association, Water Pollution Control Federation.

Halpern, B. S., Walbridge, S., Selkoe, K. A., Kappel, C. V, Micheli, F., D'Agrosa, C., ... &

Watson, R. (2008). A global map of human impact on marine ecosystems. *Science*,

319, 948-952. <https://doi.org/10.1126/science.1149345>

Cuando son más de 7 autores, se enuncian los primeros 6 autores seguido de "... " y luego se escribe el último autor

IMN. Instituto Meteorológico Nacional. (2014). Clima en Cos

Nacional de Costa Rica. http://www.imn.ac.cr/educacion/CLIMA_DE_COSTA

Organization

[RICA.html](http://www.imn.ac.cr/educacion/CLIMA_DE_COSTA_RICA.html)

CITES. (2011). *The CITES species. Convention on International Trade in Endangered Species*

of Wild Fauna and Flora. www.cites.org/eng/disc/species.php

Website:

R Core Team. (2013). R: A language and environment for statistical computing. Viena, Austria: R Foundation for Statistical Computing. <http://www.R-project.org/>

CUADROS Y FIGURAS

Tables should be numbered consecutively.

Tables and figures must be properly reduced (up to 60%) and their components must be properly sized to allow easy reading; the size of the font and the thickness of the lines should be properly visible and clear when reduced. The font already reduced should not be smaller than 8. The manuscript may include drawings and/or photographs; in the case of photographs, the journal will cover the cost of publishing them in black and white; otherwise, the author will cover the cost.

Cuadro 1. Criterios de clasificación de zonas de producción de moluscos bivalvos con base en muestras de agua de mar

Title of table: in Spanish and English. It should be placed at the top of the table, in lower case and not in bold. Times New Roman 11, double space, justified.

Table 1. Shellfish harvesting zones classification criteria based in seawater samples

Avoid vertical lines. Use horizontal lines only when they separate fields of information (headlines, subheadings, lower fields).

Category of classification	Faecal coliforms (MPN 100 mL ⁻¹)		Treatment required
	Geometric mean	90% compliance	
Approved areas	≤ 14	≤ 43	None.
Prohibited areas	No sanitary survey or conditions for approved/restricted areas not met.		Harvesting not permitted.

Reference: Lee *et al.* (2008)

You must indicate the source of the data.

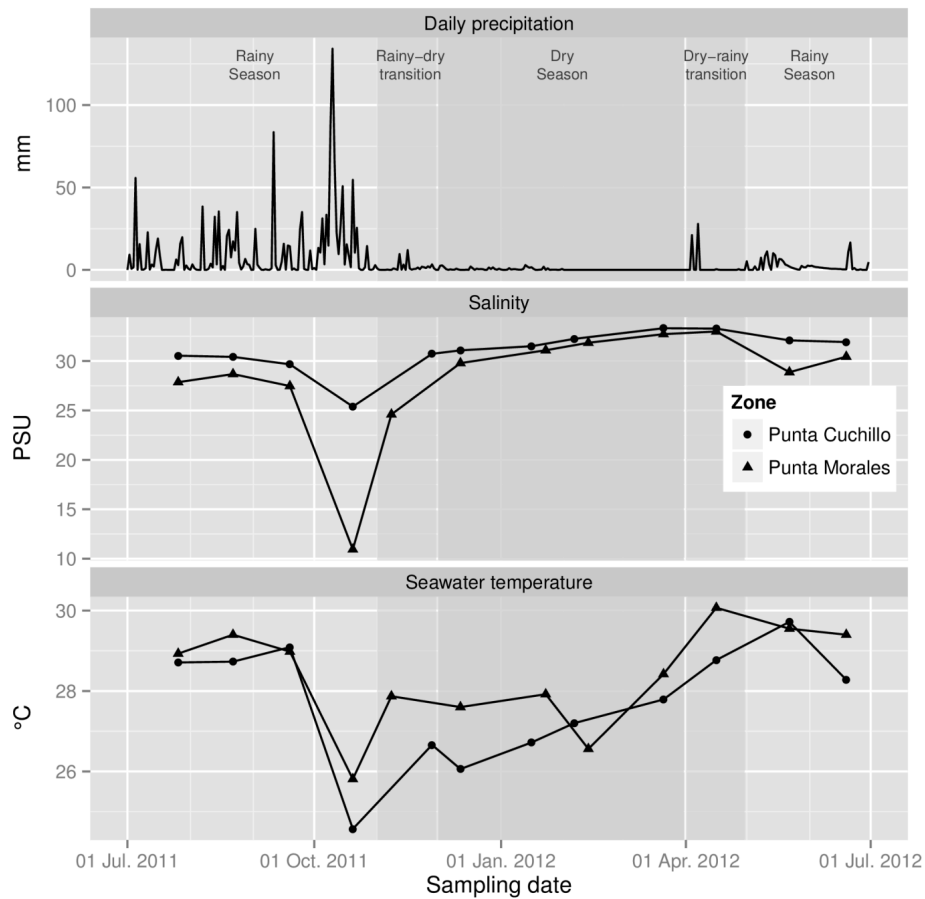


Fig. 3. Precipitación diaria (mm) y salinidad (UPS) y temperatura (°C) mensual registradas de julio de 2011 a junio de 2012 en las zonas de cultivo de *Crassostrea gigas* de Punta Cuchillo y de Punta Morales, Golfo de Nicoya, Costa Rica. Se representan la estación seca, la estación lluviosa y los meses de transición establecidos para la zona de estudio por el Instituto Meteorológico de Costa Rica. Fuente precipitación: Instituto Meteorológico Nacional de Costa Rica

Fig. 3. Daily precipitation (mm) and salinity (PSU) and temperature (°C) registered monthly from July 2011 to June 2012 in the *Crassostrea gigas* harvesting zones of Punta Cuchillo and Punta Morales, Gulf of Nicoya, Costa Rica. It represented dry season, rainy season and the transition months established for the study zone by the Meteorological Institute of Costa Rica. Precipitation source: Meteorological Institute of Costa Rica

Title of figure: in Spanish and English. It should be placed at the bottom of the figure, in lower case and not in bold. Times New Roman 11, double space, justified.