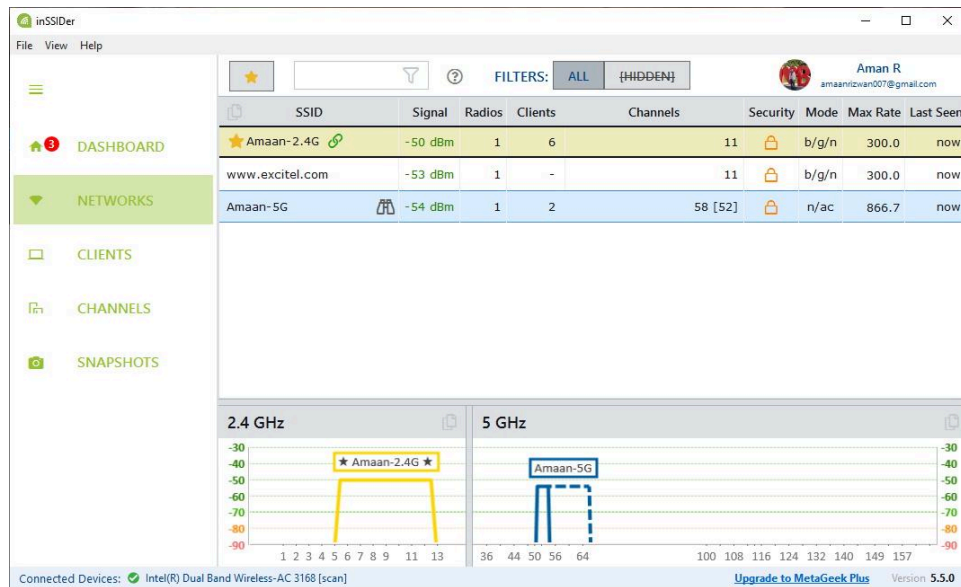


With everyone using their wireless internet, you may experience a drop in WiFi signals, resulting in poor connectivity and slow speed. However, analyzing the WiFi connection and finding a root cause can help fix the connectivity issues. Here we look at five of the best WiFi Analyzer apps for Windows to inspect and fix the wireless connectivity issues.

#1 inSSIDer

Your WiFi connection keeps dropping unexpectedly, even with the router in the next room. We can use inSSIDer to find the WiFi coverage in different rooms. This can help you decide whether to replace the router or buy a WiFi repeater to extend the wireless coverage.

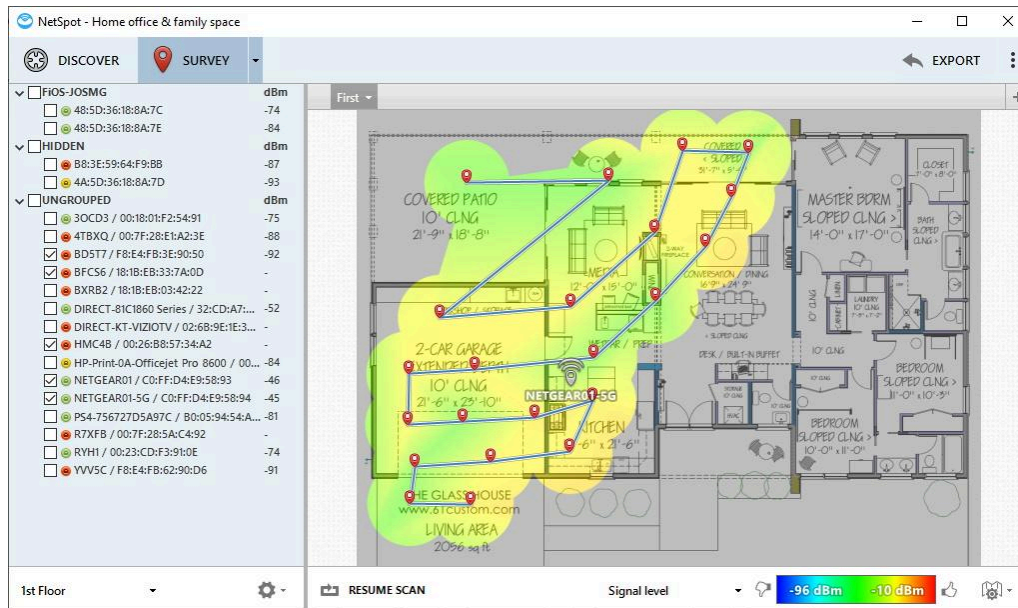


Head to the dashboard, and you get recommendations about the best channels for the WIFI connection, wireless security. In addition, stay on top of your network by seeing all the devices on the same wireless network without logging into the router.

[inSSIDER](#) (Freemium)

#2 Netspot

Living in a small house, you can find strong WiFi signal spots around the house. The problem begins when it's a bigger place with multiple rooms, so the wireless coverage is limited and inconsistent.



Visualize your wireless network through Netspot and find the dead spots around the house with no signals. Use this data to optimize hotspots and increase wireless coverage areas.

[Netspot](#) (Freemium)

#3 WiFi Analyzer

Don't fancy complicated tools? Then we recommend WiFi Analyzer, which keeps it simple on all fronts. See details of your connected WiFi appear in the first tab. It is followed by *Analyze* tab, where you can see how your wireless connection overlaps with others in the area, thus affecting the internet quality.



When you are in a public place with many WiFi options, explore different networks and see the signal strength of your laptop, frequency, occupied channels, and more.

[WiFi Analyzer](#) (Freemium)

#4 Vistumbler

Sometimes inconsistent WiFi can hinder work, studies, but you cannot identify the fault. Vistumbler can help you analyze the connection with networking tools. Use heatmaps, signal filters, and individual graphs for a side-by-side comparison of networks.

Vistumbler v10.7.1 Beta - By Andrew Calcutt - 19-05-2021 - (2022-09-21 19-12-08.mdb)

File Edit Options View Settings Interface Extra WifiDB Help *Support Vistumbler*

Stop Use GPS Save & Clear Latitude: N 0000.0000 Active APs: 6 / 19
Longitude: E 0000.0000 Loop time: 1009 ms

	#	Active	Mac Address	SSID	Signal	High Signal	RSSI	High RSSI	Channel	Authentication
+	1	Active	B4:F9:49:95:61:88	Amaan-5G	100%	100%	-56 dBm	-51 dBm	52	WPA2-Personal
+	2	Active	8C:A3:99:21:77:E9	Franciscan	100%	100%	-69 dBm	-56 dBm	1	WPA2-Personal
+	3	Active	B4:F9:49:95:61:8E	www.excitel.com	100%	100%	-47 dBm	-44 dBm	11	WPA2-Personal
+	4	Dead	94:98:69:68:87:8E	Lal's	0%	15%	-100 dBm	-85 dBm	9	WPA2-Personal
+	5	Dead	B4:A7:C6:94:3D:C0	subir4g	0%	100%	-100 dBm	-74 dBm	6	WPA2-Personal
+	6	Active	8C:A3:99:21:77:EA	Franciscan_5G	75%	95%	-73 dBm	-69 dBm	149	WPA2-Personal
+	7	Dead	8E:A3:99:31:77:EA		0%	90%	-100 dBm	-67 dBm	149	WPA2-Personal
+	8	Active	B4:A7:C6:94:3D:C1	subir5g	15%	25%	-86 dBm	-81 dBm	44	WPA2-Personal
+	9	Active	B4:F9:49:95:61:8D	Amaan-2.4G	100%	100%	-64 dBm	-44 dBm	11	WPA2-Personal
+	10	Dead	F8:C4:F3:C2:66:14	Om namah shivay	0%	75%	-100 dBm	-73 dBm	5	WPA2-Personal
+	11	Dead	7A:BC:25:BA:83:D2	Nokia C01 Plus	0%	12%	-100 dBm	-88 dBm	10	WPA2-Personal
+	12	Dead	0E:44:03:6F:43:AD	Realme GT Master	0%	8%	-100 dBm	-92 dBm	11	
+	13	Dead	04:20:84:AD:B0:73	Tusha	0%	10%	-100 dBm	-90 dBm	6	WPA2-Personal
+	14	Dead	AE:37:28:4D:16:69		0%	7%	-100 dBm	-93 dBm	11	WPA2-Personal
+	15	Dead	AC:37:28:5D:16:69	Aarika	0%	8%	-100 dBm	-92 dBm	11	WPA2-Personal
+	16	Dead	F8:C4:F3:DA:CE:1B	Alaska	0%	10%	-100 dBm	-90 dBm	11	WPA2-Personal
+	17	Dead	7C:A9:6B:4F:5D:98	www.excitel.com	0%	8%	-100 dBm	-92 dBm	1	WPA2-Personal
+	18	Dead	7C:A9:6B:4F:5D:95	Shanvi2.4	0%	8%	-100 dBm	-92 dBm	1	WPA2-Personal
+	19	Dead	04:C8:07:6D:8C:E9	Lucknow	0%	9%	-100 dBm	-91 dBm	11	WPA2-Personal

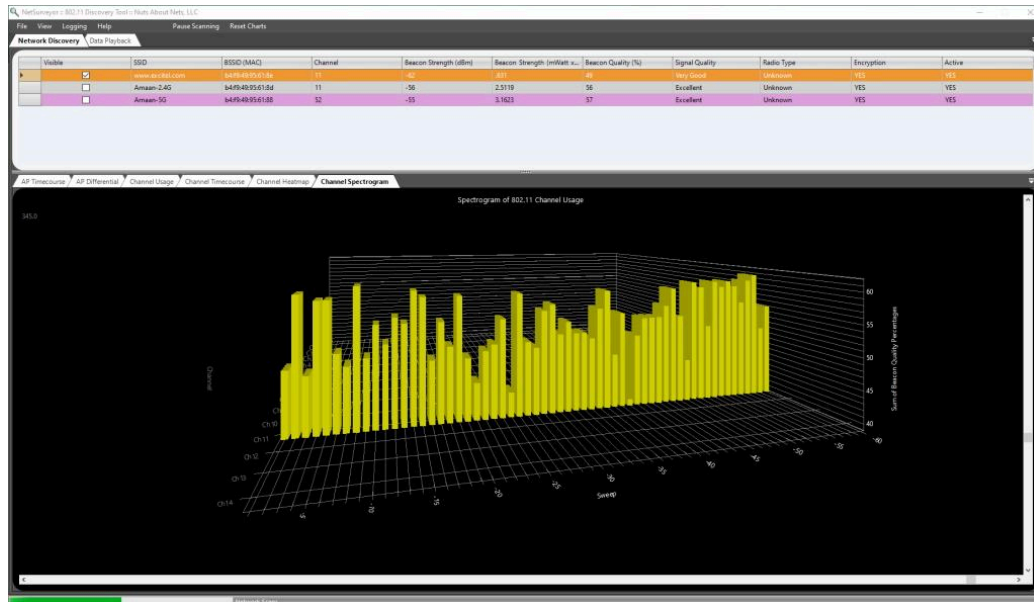
When you hit a dead-end while troubleshooting the WiFi problem at home, use the report feature to export the network data and send it to experts. While the internet is down at home, use the on-board feature to locate internet hotspots nearby or in public places.

[Vistumbler](#) (Free)

#5 NetSurveyor

You have WiFi connectivity problems, but they disappear when the technician pays a visit. Here we can record the real-time network activity and show it to the support agent, who can look into the issue at hand.

NetSurveyor lets you visualize the network activity in various ways. It can be a three-dimensional bar, spectrogram, or a pie chart.



Export the complete report of your network in PDF. It contains all the visualizations, AP and SSID details, channels, and band information.

[NetSurveyor](#) (Free)

Conclusion

Analyzing WiFi on laptops and desktops is easy. You can start with WiFi Analyzer available on the Microsoft store. Move to inSSIDer and Netspot for in-depth information.