

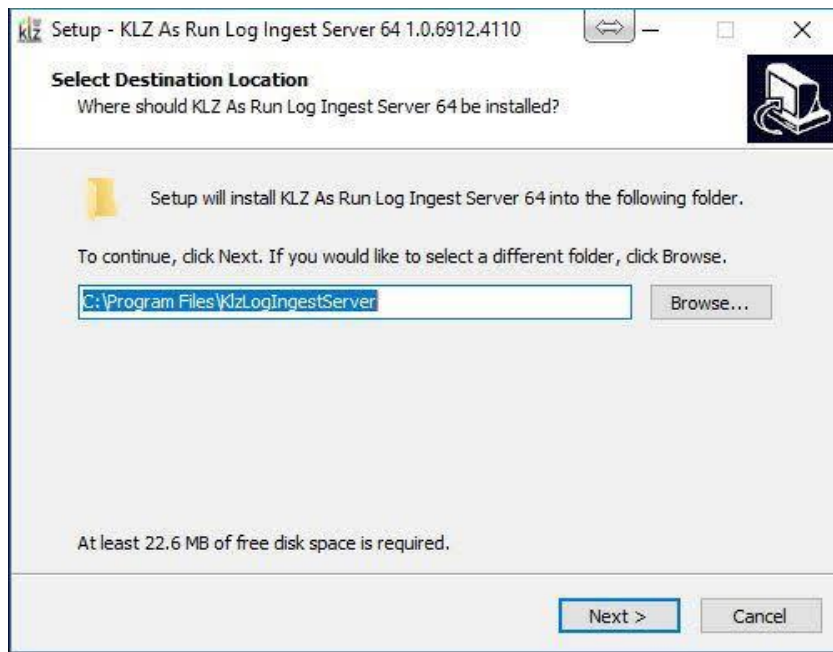
KLZ LogCapture Service

Installation

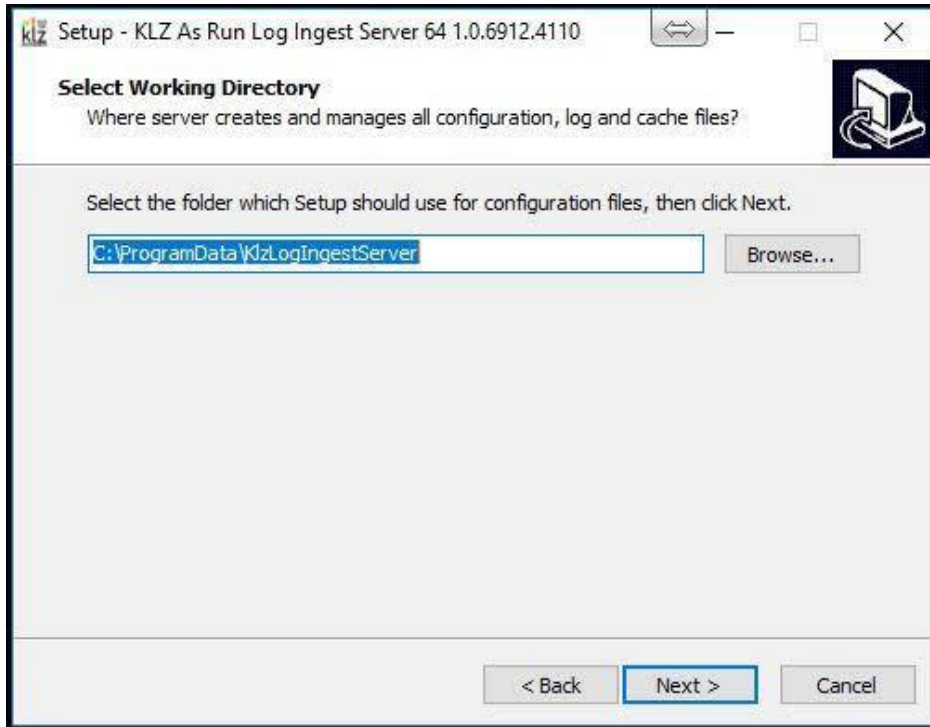
The LogCapture Service can be installed on 32 or 64 bit computers running Windows 7 ,8.1,10. Windows Server 2008- 2016 operating systems.

Download the SetupKlzLogIngestServer64.exe or the SetupKlzLogIngestServer32.exe setup files. Copy the installation file to a folder.

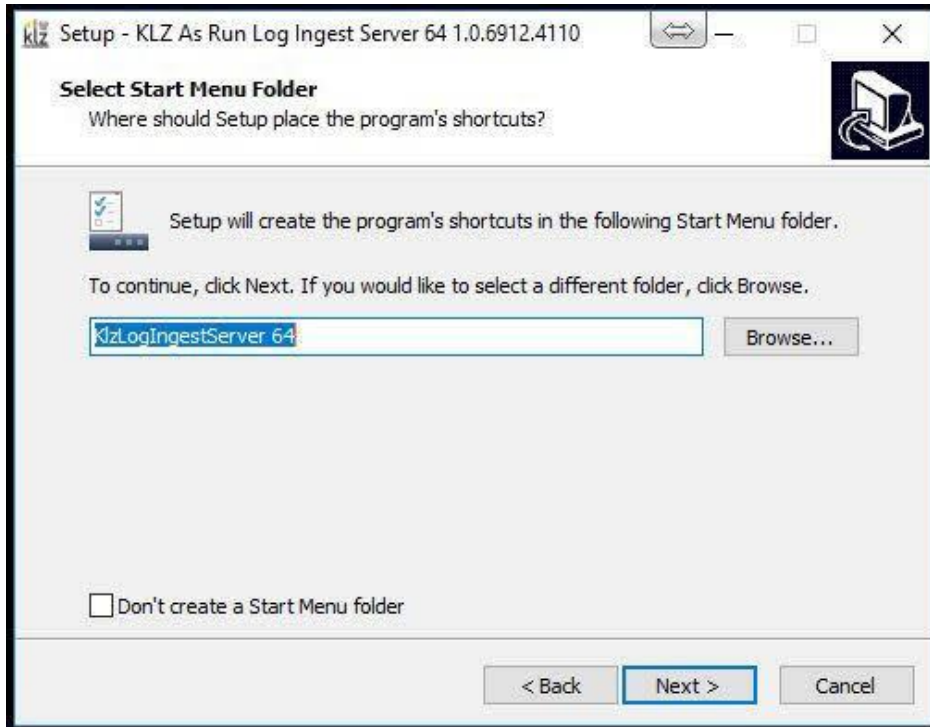
Double click the SetupKlzLogIngestServer64.exe to start the installation . This installation requires that you have administrative rights to install the service.



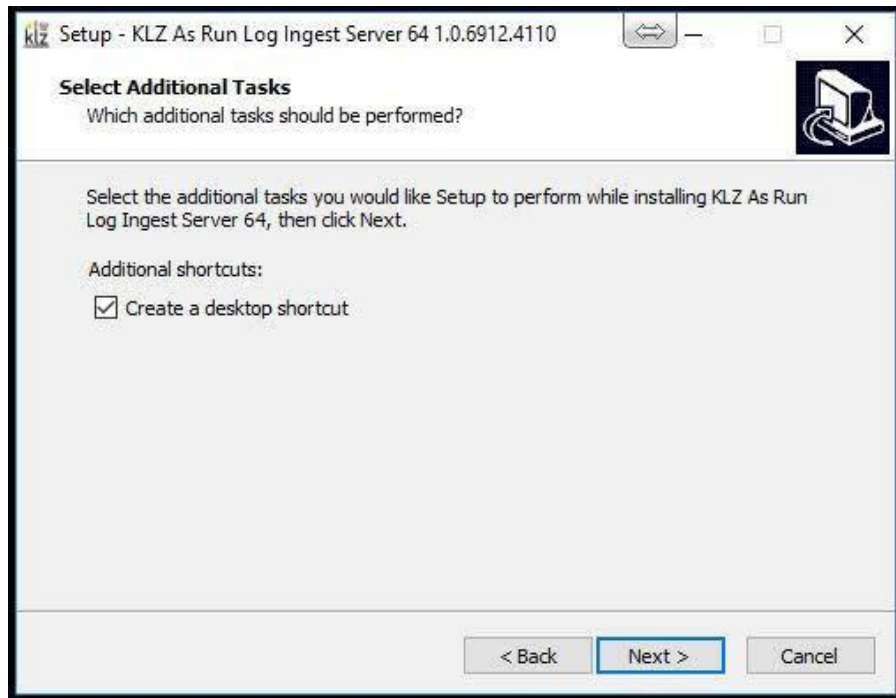
KLZ recommends taking the default folder path. Click Next to install to the Program Files\KlzLogIngestServer folder.



Click Next to select the ProgramData\KlzLogIngestServer folder as the Working Directory.

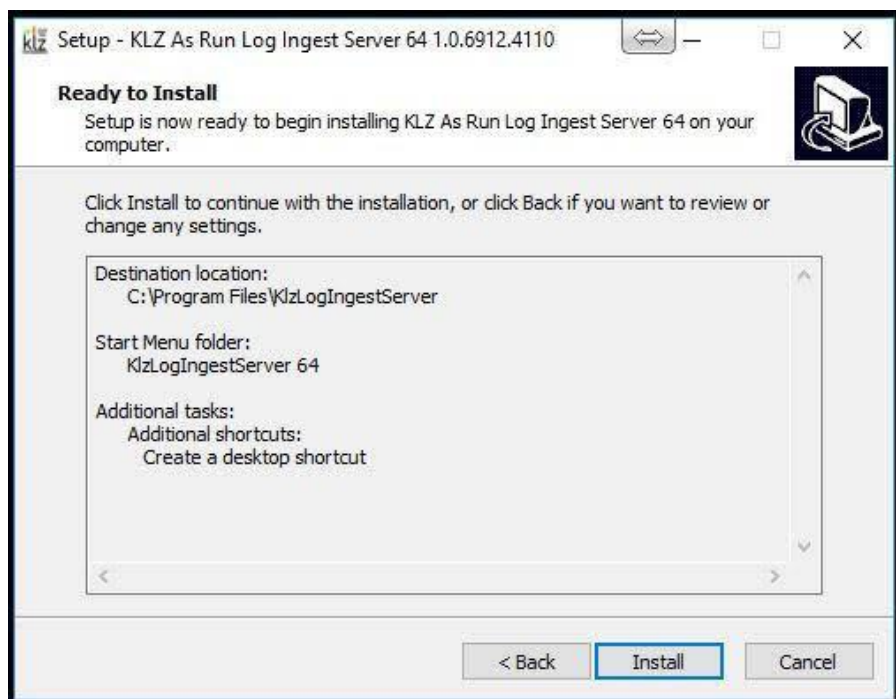


Click Next to add KLZLogIngestServer to the Start Menu Folder.



Click Next to create a desktop shortcut .

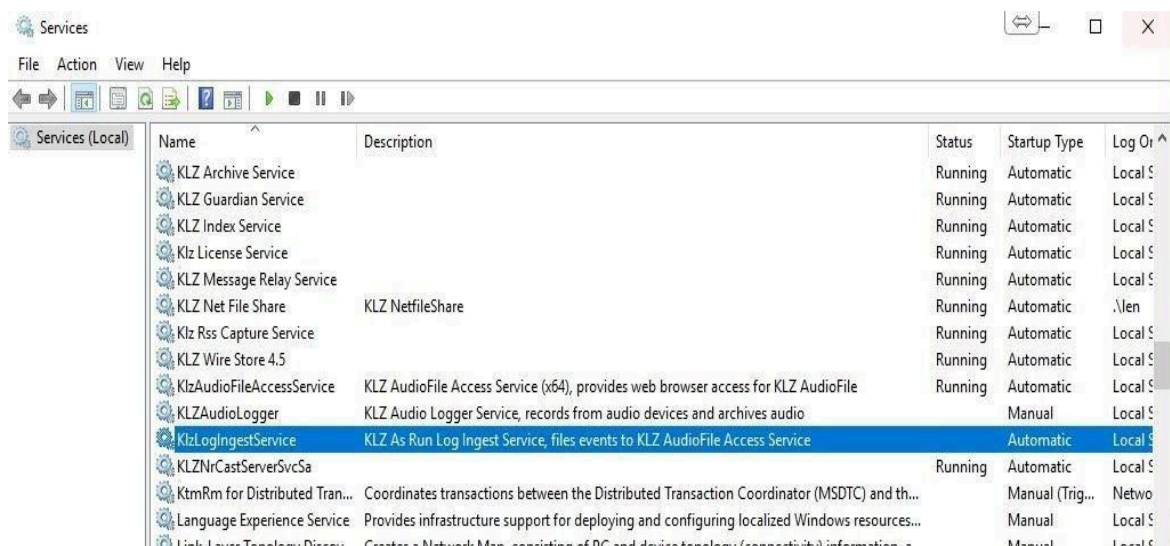
Select Install to install the KlzLogIngestServer.





Press Finish to to exit.

Open Services to confirm the KLZLogIngest Service is installed . The service can also be controlled with the KlzLogIngestConfig program . Start the KLZLogIngestService .



Configure KLZLogIngestService

Start the shortcut to KlzLogIngestConfig.exe located on your desktop.

(A shortcut can be made by browsing to the C:\Program Files\KlZLogIngestServer folder. Right click on the KlzLogIngestConfig.exe and select Create Shortcut on Desktop .)

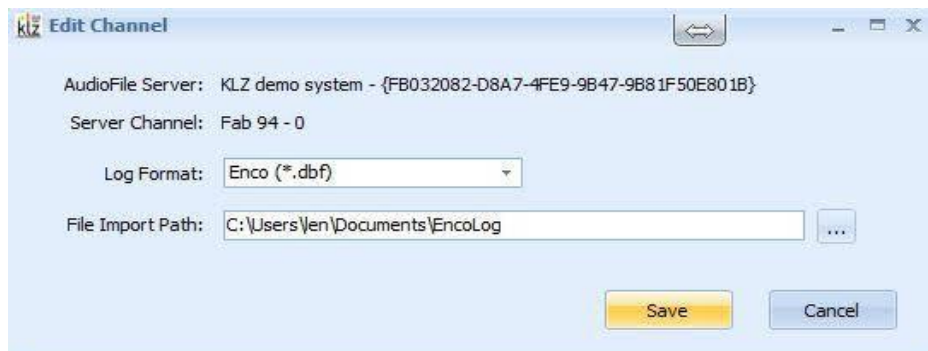
Add the Server Host IP Address, , Server Port (default 5502)and password of the computer that is running the KLZ Access Server service. Press Update to connect.

Once connected select the “Available” tab to show all the AudioFile Servers and channels configured on KLZ Access Server .



Configured Tab

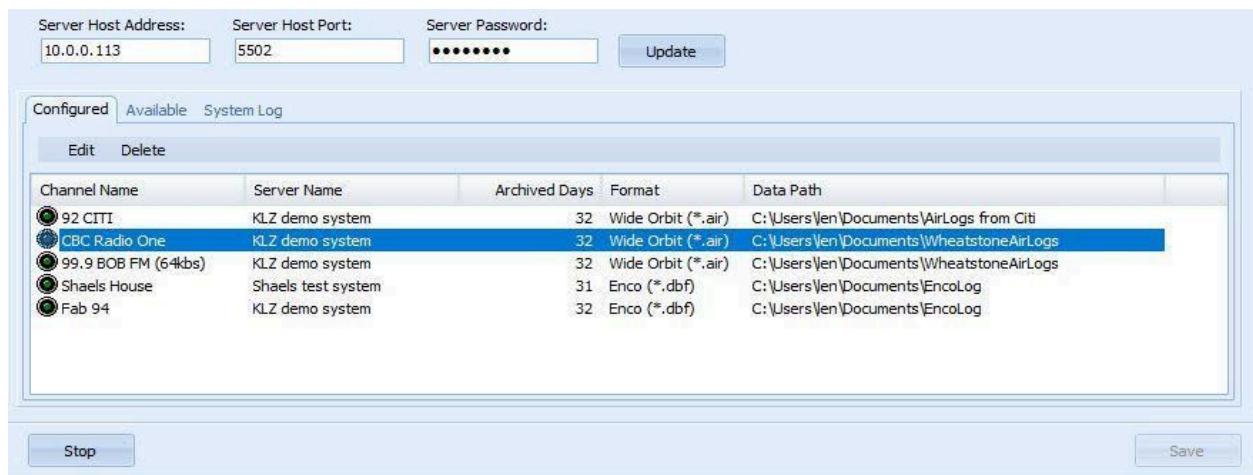
Select the Configured Tab to View channels , Server Name, Archived Days, Log Format and the Data Path to the as run logs . Use the Edit button to change the log format or path to the as run log folder. Use the Delete button to delete a channel . The Save button is used to save the configuration when a change is made .



Add Channel

Press the Add Button to configure a new channel. Select the log format and File Import Data Path where the as run logs are located.

Use the Start/; Stop button to control the KLZLogIngestService



System Logs

The System Logs provides information on the success or failure of imports, posting, parsing and urgent events.

Information Success or failure of posting the log

Error Critical errors

System Service was stopped or started. Parse and Post

Urgent Channels events ..status of log import process

Server Host Address: 10.0.0.113 Server Host Port: 5502 Server Password: Update

Configured Available System Log

Information Errors System Urgent

	Title	Source	Event Time
Information	Process Channel	Fab 94	Thu Jan 03 02:20:43 pm
Information	Process Channel	92 CITI	Thu Jan 03 02:19:43 pm
Information	Process Channel	Fab 94	Thu Jan 03 02:18:01 pm
Information	Process Channel	Fab 94	Thu Jan 03 02:17:00 pm

180417.AIR Posted Events: 1424 Invalid Events: 0 [cached]

Stop Save

Server Host Address: 10.0.0.113 Server Host Port: 5502 Server Password: Update

Configured Available System Log

Information Errors System Urgent

	Title	Source	Event Time
System	Parse and Post Service active	Started	Fri Jan 04 09:54:03 am
System	Service was stopped	Stopped	Fri Jan 04 09:53:58 am
System	Parse and Post Service active	Started	Fri Jan 04 09:20:16 am
System	Parse and Post Service active	Started	Thu Jan 03 02:14:59 pm
System	Service was stopped	Stopped	Thu Jan 03 02:14:18 pm

The service was activated

Stop Save