

Content

Enabling MS Excel Macros

Certain templates make use of macros to perform the more complex calculations or to automate other elements of the interface. This document provides guidance on how to configure Excel to enable the template's macros.

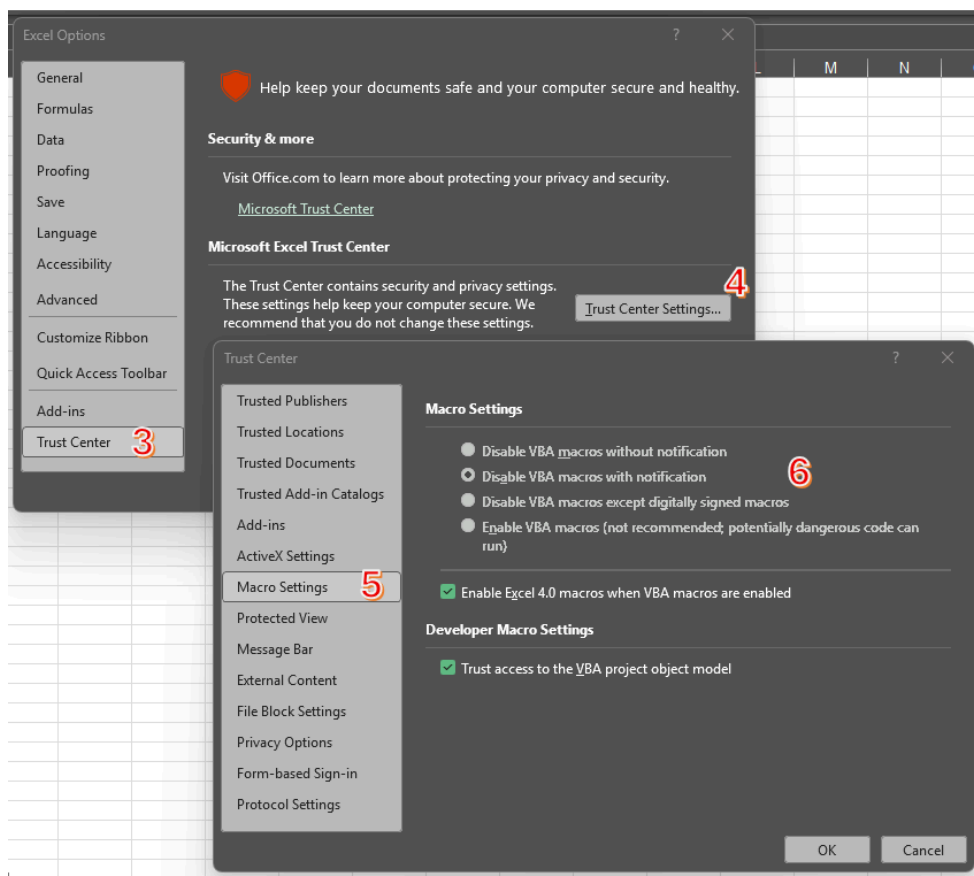
⇒ [How to enable macros](#)

⇒ [How to enable ActiveX components](#)

How to enable macros

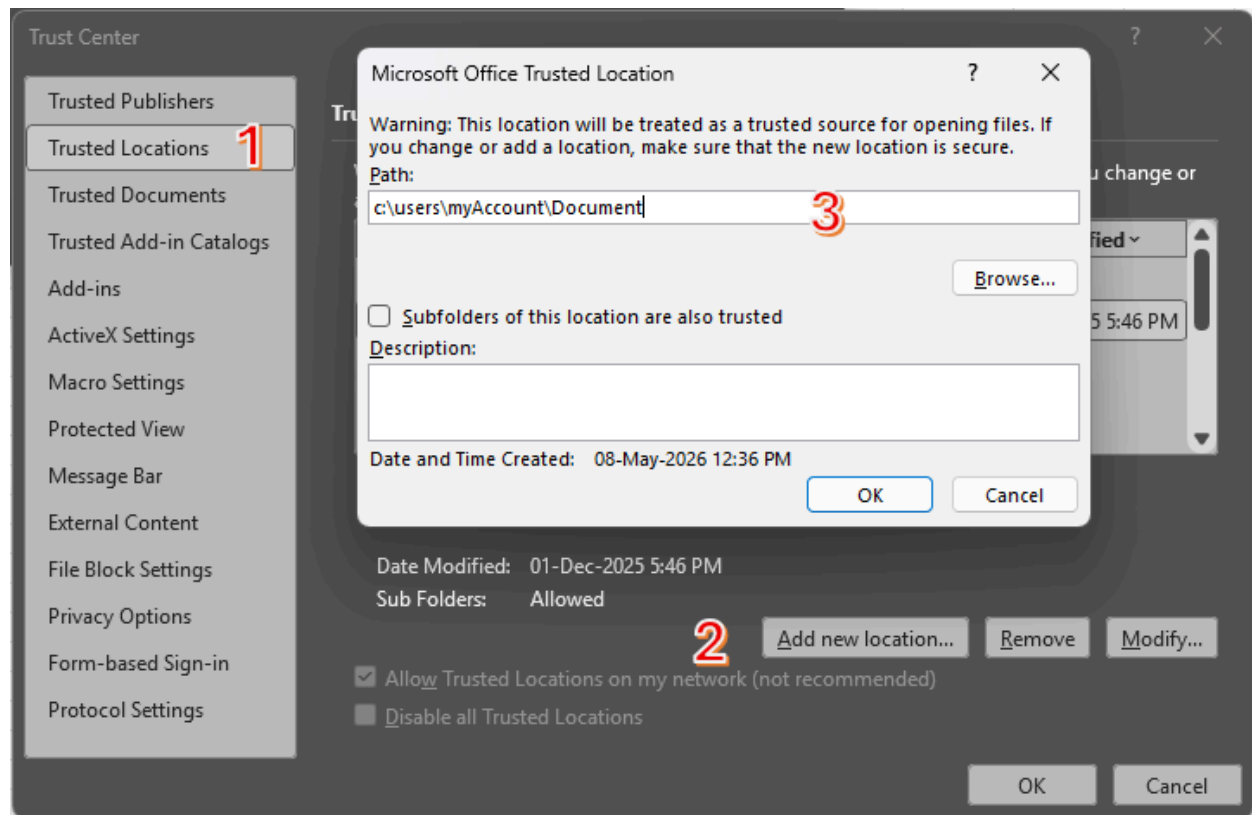
From Excel's menu:

- Go to File → Options → Trust Center (3) → Trust Center Settings (4) → Macro Settings(5)
- Select "Disable VBA macros with notification" (6). Click Ok.
- Close and restart Excel.



Make sure your template is saved in a trusted location on your computer. To add one a trusted location:

- From the Excel's Trust Center, click Trusted Locations (1) → Add new location... (2)
- Provide the folder path for your trusted location (3). Click OK.
- Close and restart Excel.



How to enable ActiveX components

If you receive warnings related to “ActiveX” components upon opening the template

- From Excel's Trust Center, click ActiveX Settings
- Select “Prompt me before enabling all controls with minimal restrictions”
- Close and restart Excel.

Please note that ECCC is updating templates to replace ActiveX components by native Excel components. These templates will be available shortly on the Google Drive.

