

## Glover Elementary School: Arrival/Dismissal Protocols

The following is a visual summary of Glover's Arrival and Dismissal Protocols. This can help anyone who is dropping off or picking up students navigate safely and efficiently. Please share with anyone who may be dropping off or picking up your children.

### **Live Drop Off/Pick Up Line**

Consistent with previous years, our car line will cue up in the front parking lot and snake around through the back parking lot at arrival and dismissal. School buses will continue to drop off students in front of the building.

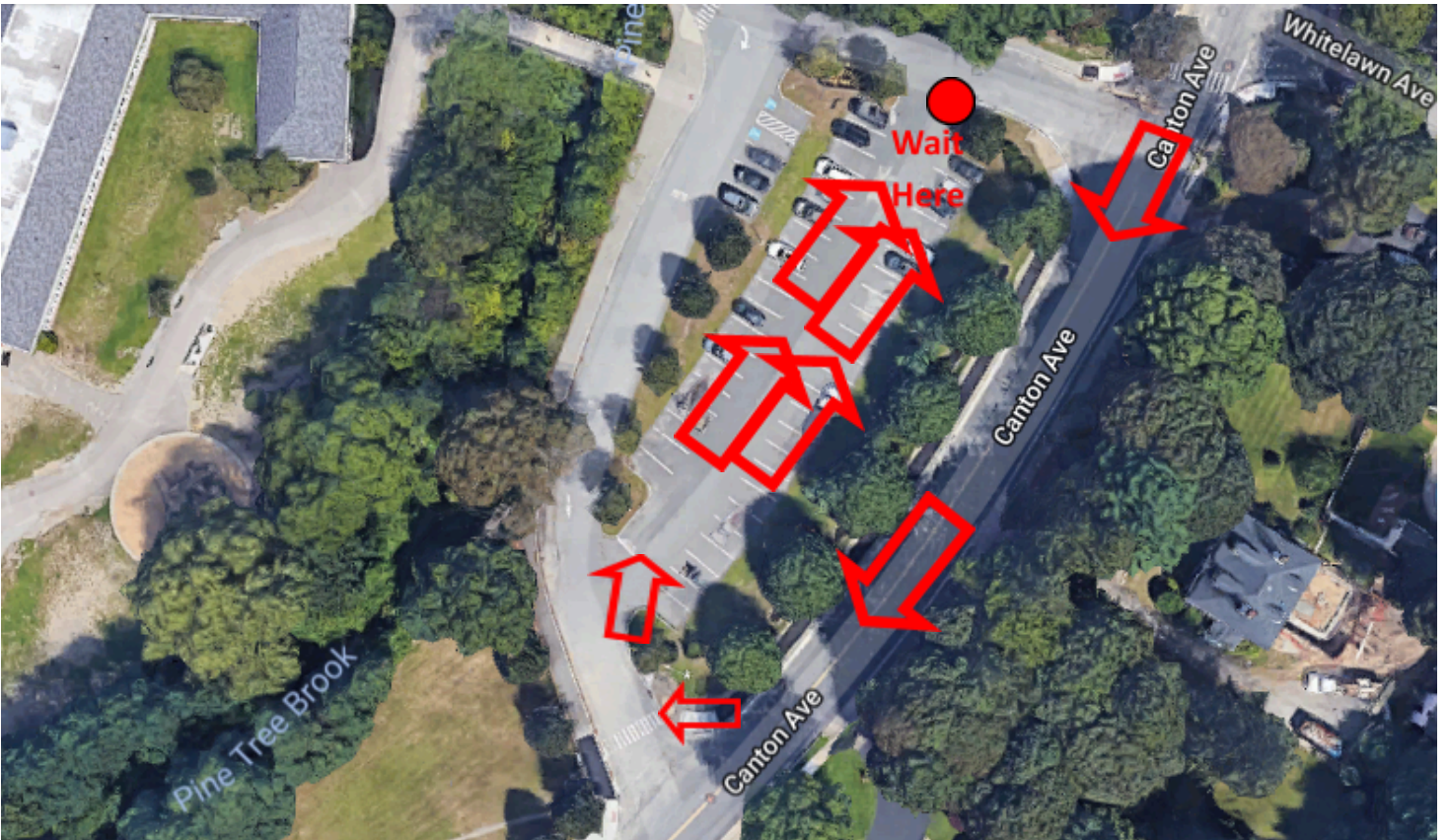
At arrival (8:35-8:50) and dismissal (3:19-3:35) times, we ask that you form two lines in the front parking lot which allows us to accommodate as many vehicles as possible. Please follow staff directions and wait until your car is called into the back parking lot. Once called to the back parking lot, please pull all the way up so that we can make room for as many cars as possible. Once your child has entered/exited your car, please follow the parking lot exit plan described below.

A few reminders:

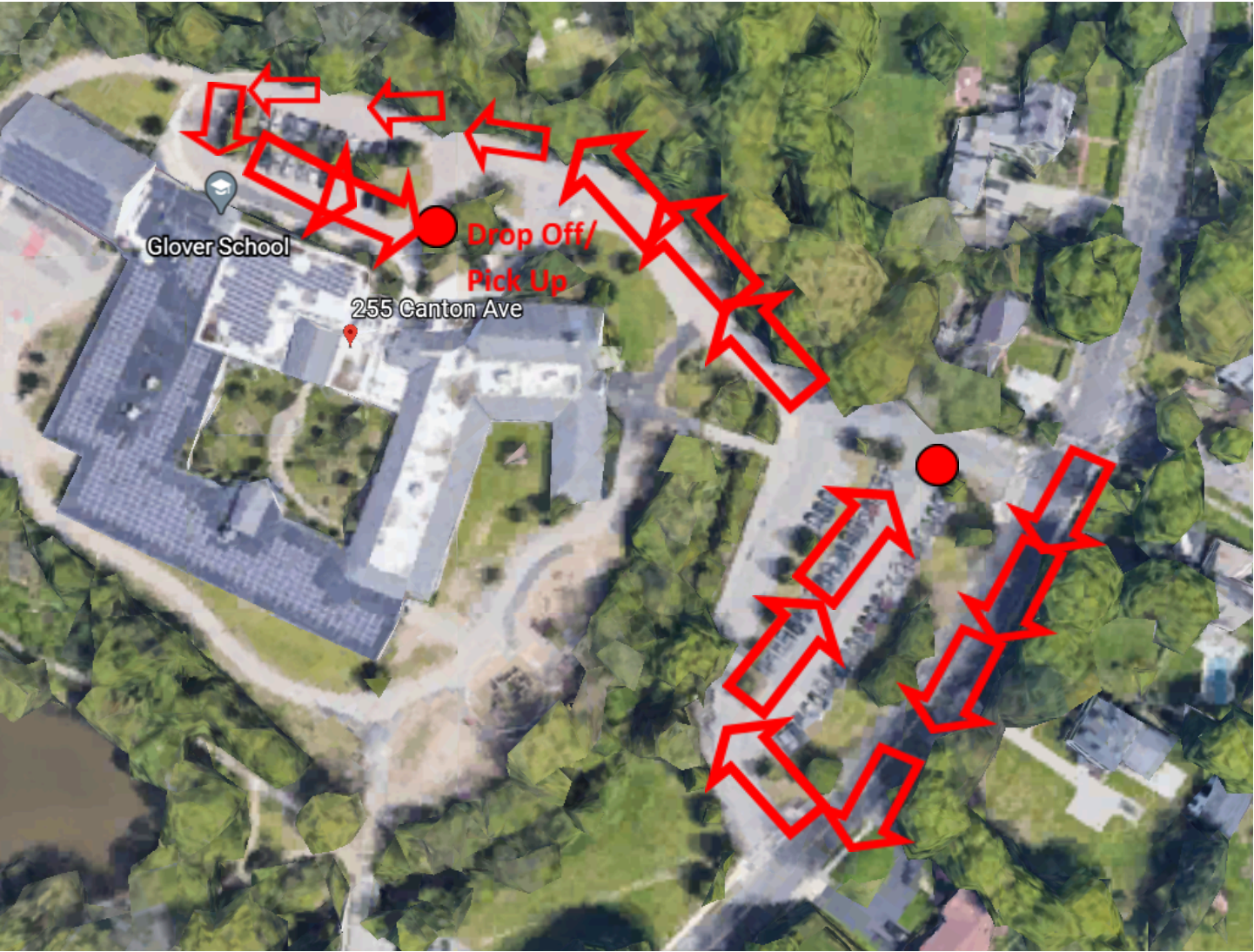
If you notice a fellow Glover Grown-Up not following these expectations, please email me directly and I will follow up accordingly.

- ***ALL STUDENTS SHOULD EXIT THE VEHICLE ON THE PASSENGER SIDE.*** Students should never exit the vehicle on the driver's side. This is a safety issue. If car seats need to be rearranged in order to make sure students only exit on the passenger side, we would appreciate it.
- Please do not exit your vehicle at any point. Please make sure your children are able to open their own car doors on the ***PASSENGER SIDE*** and exit/enter vehicles independently and efficiently. If your child is unable to exit/enter the vehicle independently, please email me and we can arrange for accommodations to be made.
- Please make sure your child is **prepared** to exit the vehicle. Waiting until your vehicle is stopped to gather backpacks, coats, finish breakfast, etc. slows down the entire car line and potentially results in children arriving tardy to school.
- ***NO VEHICLE SHOULD PULL AROUND AND PASS A VEHICLE IN FRONT OF THEM.*** This poses a significant risk to our students. We expect that all students exit on the passenger side onto the sidewalk but in the off chance that a student is exiting on the driver's side, passing a vehicle in front of you is dangerous.
- Please do not enter through the bus entrance.
- In the car line, please pull forward as much as possible to make room for additional cars.
- Glover hours are 8:35am-3:19pm. Students should arrive between 8:35am-8:50am. Students who arrive before 8:35am will not be supervised by staff. If you arrive in the drop off line before 8:35, please remain in your vehicle with your child until staff arrive on duty.

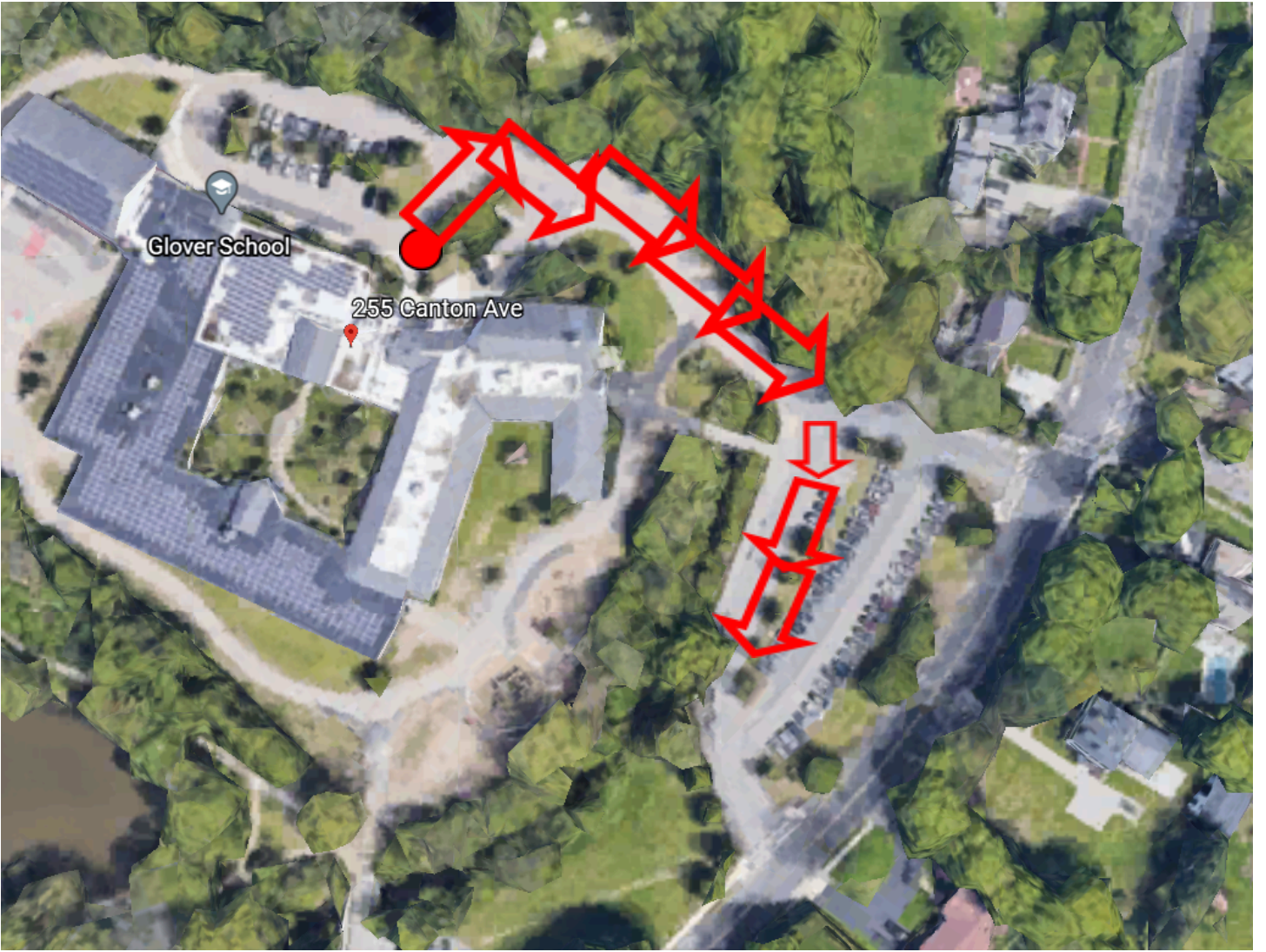
Front Parking Lot Waiting Zone



Back Parking Lot Drop Off Zone



Parking Lot Exit

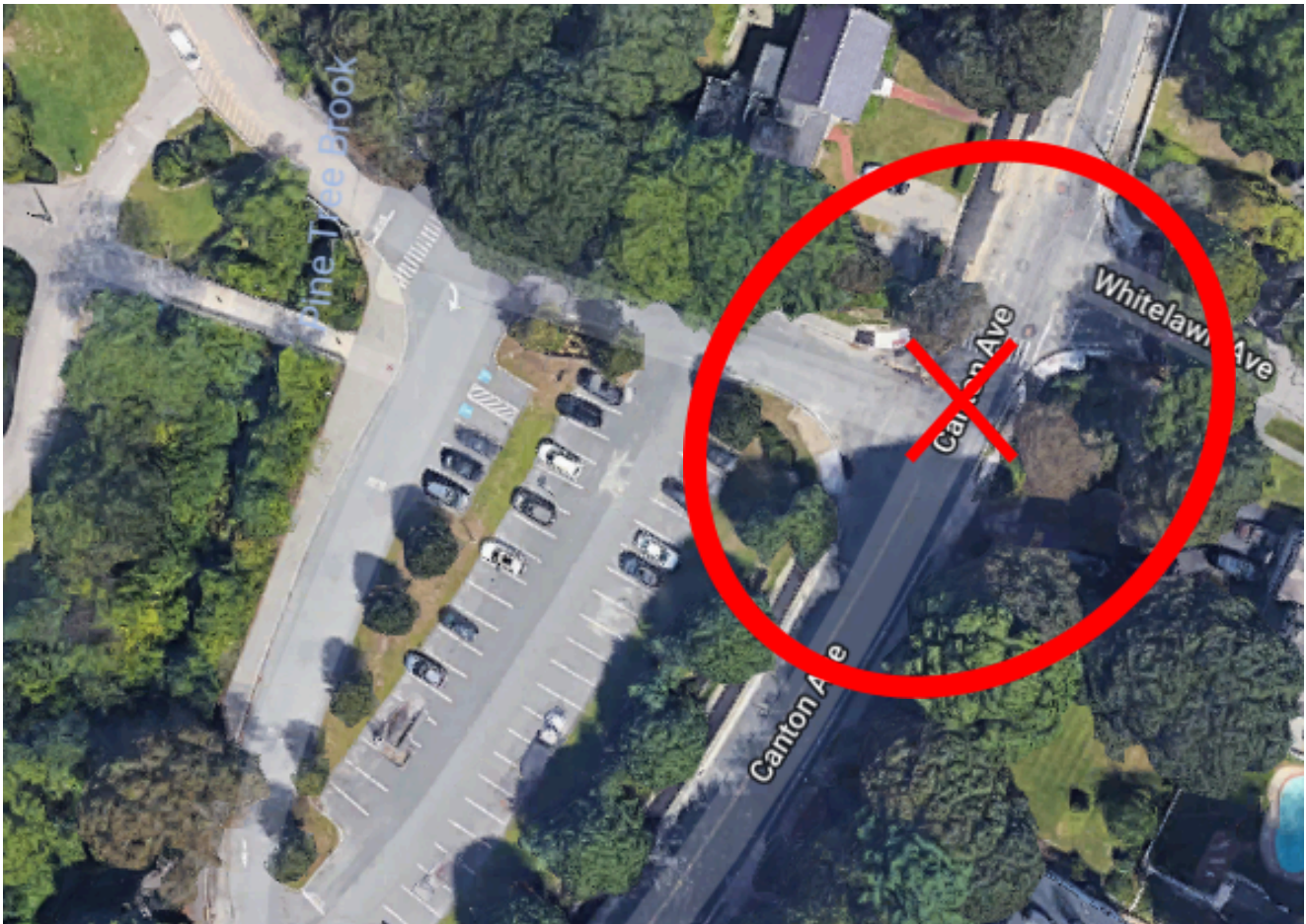


## Canton Avenue Through Traffic



It is very important that we avoid blocking through traffic on Canton Avenue. Emergency vehicles need to be able to get through. Please pull as close as possible to the side of the road if you need to wait to enter the parking lot and be cognizant of vehicles passing through. Please do not block the bus entrance.

## Bus Only Entrance



During the hours of 8:00-4:00, this entrance is for BUSES ONLY. Please do not enter through this entrance. Instead, follow the traffic pattern delineated above.



School bus driveway signage.

## Parking on Whitelawn



Please remember to enter Whitelawn at the FAR entrance (the one farthest from the school) and loop around towards the school. Please only park on one side of Whitelawn. Please be cognizant of our neighbors and avoid parking on their lawns.

## Central Ave Parking Lot



This is just a reminder that there is a parking lot off of Central Avenue. The footpath leads directly to Glover. If you are looking for a place to park and walk with your children, this is always an option.

## Walk/Bike To School!

Just a reminder...a great way to avoid the car line is to encourage walking or biking to/from school.



School front bike racks.