

The Introduction presents the purpose of the studies reported and their relationship to earlier work in the field. It should not be an extensive review of the literature. Use only those references required to provide the most salient background to allow the readers to understand and evaluate the purpose and results of the present study without referring to previous publications on the topic.

The Introduction presents the purpose of the studies reported and their relationship to earlier work in the field. It should not be an extensive review of the literature. Use only those references required to provide the most salient background to allow the readers to understand and evaluate the purpose and results of the present study without referring to previous publications on the topic.

RESEARCH METHOD

The Methods sections should be brief, but they should include sufficient technical information to allow the experiments to be repeated by a qualified reader. Only new methods should be described in detail. Cite previously published procedures in References.

Tables and Figures are presented center, as shown below and cited in the manuscript.

Table 1. Number of students based early mathematical ability

PAM	Experiments	Control
High	11	12
Medium	53	44
Low	9	10
Total	73	66

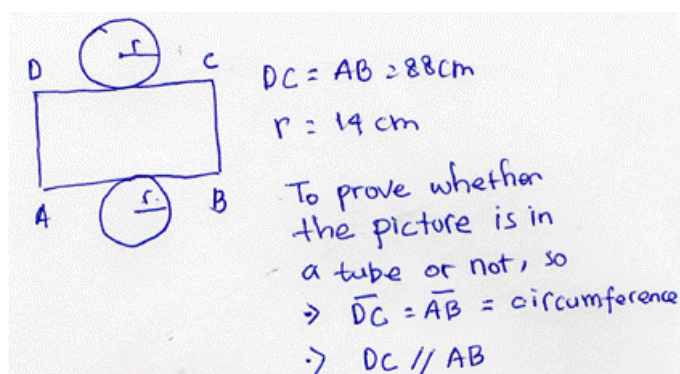


Figure 1.Work studentresults

RESULTS AND DISCUSSION

Based on the description of the observation results, student effectiveness increases when learning **Results (12pt)**

The Results should include the rationale or design of the experiments as well as the results of the experiments. Results can be presented in figures, tables, and text. The Results should include the rationale or design of the experiments as well as the results of the experiments. Results can be presented in figures, tables, and text.

Discussion (12pt)

The Discussion should be an interpretation of the results rather than a repetition of the Results. The Discussion should be an interpretation of the results rather than a repetition of the Results. The Discussion should be an interpretation of the results rather than a repetition of the Results. The Discussion should be an interpretation of the results rather than a repetition of the Results. The Discussion should be an interpretation of the results rather than a repetition of the Results.

The Discussion should be an interpretation of the results rather than a repetition of the Results. The Discussion should be an interpretation of the results rather than a repetition of the Results. The Discussion should be an interpretation of the results rather than a repetition of the Results. The Discussion should be an interpretation of the results rather than a repetition of the Results.

CONCLUSION

The Conclusion should contain the confirmation of the problem that has been analyzed in result and discussion section. The Conclusion should contain the confirmation of the problem that has been analyzed in result and discussion section. The Conclusion should contain the confirmation of the problem that has been analyzed in result and discussion section

REFERENCES

- Abdurrahman, Mulyono. 2003. *Pendidikan Bagi Anak Berkesulitan Belajar*. Jakarta: Rineka Cipta.
- Asrori, Mohammad. 2007. *Psikologi Pembelajaran*. Bandung: CV Wacana Prima. Dari sumber : <http://jagadsuminar.blogspot.com/2012/05/active-leraning-teori->
- Daryanto. 2014. *Pendekatan Pembelajaran Saintifik Kurikulum 2013*. Yogyakarta: Gava Media.
- Dimiyati dan Mujiono. 2009. *Belajar dan Pembelajaran*. Jakarta: Rineka Cipta. Dwijanto. 2013. Keefektifan Pendekatan *Problem Based Learning* Terhadap Kemampuan Berpikir Kreatif Matematika. Unnes Journal Of Mathematics Education. 2252-6927.
- Johnson, Lou Anne. 2009. *Pengajaran Yang Kreatif dan Menarik*. Bandung: PT Macanan Jaya Cemerlang.
- Kurinasih, Imas dan Sani, Berlin. 2014. *Sukses Mengimplementasikan Kurikulum 2013*. Yogyakarta: Kata Pena.
- Praptiwi, L. 2012. Efektivitas Model Pembelajaran Eksperimen Inkuiri Terbimbing Berbantuan *MY Own DICTIONARY* Untuk Meningkatkan Penguasaan Konsep dan Unjuk Kerja Siswa SMP RSBI. Unnes Science Education Jurnal. 2252- 6617.
- Purwanto (2011). *Evaluasi Hasil Belajar*, Yogyakarta : Pustaka Belajar. Sugiyono. 2011. *Statistika Untuk Penelitian*. Bandung : ALFABETA.
- Sumiati dan Asra. 2007. *Metode Pembelajaran*. Bandung: CV Wacana Prima. Suprijono, Agus. 2009. *Cooperative Learning*. Jakarta: Pustaka Pelajar.
- Yannidah, Novi. 2013. Pengembangan Perangkat Pembelajaran Matematika Dengan Pendekatan *UPTITUDE TREATMENT INTERACTION* Pada Efektivitas Pembelajaran Matematika. Jurnal Pendidikan Matematika STKIP PGRI Sidoarjo. 2337-8166.
- Susanti, Vera Dewi. 2011. Efektivitas Model Pembelajaran Portofolio dan Model Pembelajaran Kooperatif *THINK PAIR AND SHARE* (TPS) Terhadap Prestasi Belajar Matematika Ditinjau Dari Kreativitas Siswa VII SMP Negeri 2 Kebonsari Tahun Ajaran 2011/2012. Jurnal Pendidikan Matematika FPMIPA IKIP PGRI Madiun.

- Erlangga, Yohanna. 2014. Penerapan Model Pembelajaran Berbasis Masalah Dengan Pendekatan Scientific Dalam Pembelajaran Matematika Pada Siswa Kelas VII MTsN Batu Bara. Jurnal Matematika dan IPA FKIP Universitas Muhammadiyah Sumatera Barat. 091000284202116.
- Susanti, Vera Dewi. 2011. Efektivitas Model Pembelajaran Portofolio dan Model Pembelajaran Kooperatif *THINK PAIR AND SHARE* (TPS) Terhadap Prestasi Belajar Matematika Ditinjau Dari Kreativitas Siswa VII SMP Negeri 2 Kebonsari Tahun Ajaran 2011/2012. Jurnal Pendidikan Matematika FPMIPA IKIP PGRI Madiun.
- Erlangga, Yohanna. 2014. Penerapan Model Pembelajaran Berbasis Masalah Dengan Pendekatan Scientific Dalam Pembelajaran Matematika Pada Siswa Kelas VII MTsN Batu Bara. Jurnal Matematika dan IPA FKIP Universitas Muhammadiyah Sumatera Barat. 091000284202116.
- A Parasuraman, Valerie A. Zeithmal, Leonardo L. Berry. 1990. *“Delivering quality Service: Balancing Customer Perception and Expectations”* (The Free Press)
- Arikunto, Suharsimi. 2010. *Prosedur Penelitian: Suatu Pendekatan Praktik*, Rineka Cipta, Jakarta
- Depkes RI. 2006. *Pedoman Penyelenggaraan dan Prosedur Rekam Medis Rumah Sakit Di Indonesia*. Jakarta: Depkes RI.
- Djarwanto, Ps. 1995. *Petunjuk Penulisan Skripsi*. Edisi kedua. BPFE.
- Effendi, Sofian dan Tukiran. 2014. *Metode Penelitian Survey*. Jakarta: LP3ES.
- Kementrian Kesehatan RI. 2012, *Pedoman Teknis Bangunan Rumah Sakit*, Jakarta: Direktorat Bina Pelayanan Penunjang Medik dan Sarana Kesehatan Direktorat Bina Upaya Kesehatan
- Martilla, J.A dan James. (1977). *Importance-Performance Analysis*. Journal of marketing, 41 (1), 77-79.
- Parasuraman, A., Zeithaml Valerie.1990. *Servqual:A Multiple-Item Scale for Measuring Consumer Perception of Service Quality*. Journal of Retailing.
- Pohan, S Imbalo. 2013. *Jaminan Mutu Layanan Kesehatan Dasar-Dasar Pengertian dan Penerapan*. Jakarta: EGC.
- Sugiyono. 2017. *Metodologi Penelitian Kuantitatif, Kualitatif dan R&D*. Bandung: Alfabeta, CV
- Tannady, N, H. et al. (2018). *Service Quality analysis of two of the largest retail chains with minimart concept in Indonesia*. *Business: Theory and Practice*, 1(9), 177-185