

WAVE (WEB ACCESSIBILITY EVALUATION TOOL) GUIDE

What is WAVE?

WAVE is a free, online accessibility evaluation tool “to help you determine the accessibility of web content.” [WAVE About](#) WAVE is being used to help faculty determine if their websites meet ADA compliance standards for students needing alternative content delivery.

What can WAVE do?

WAVE will alert you to possible issues related to the accessibility of your web content.

What WAVE is not

- Evaluate content within the a secure and closed environment.
- Examine the content **INSIDE** a webpage. For example, a video on YouTube. WAVE will report on the YouTube web page itself but not the media (video) contained inside the page.
- Allow you to fix errors for web content you do not control.
- Tell you how to fix errors or alerts identified by WAVE.

Using WAVE

Faculty should examine their online course content and identify all links that direct students to content outside the Learning Management System. (This may include links or embed codes for video, podcasts, vodcasts, interactive web pages, websites, etc.).

What happens if my course materials are not accessible?

Immediate alterations to the content are *only* required if a student needs specific accommodations related to that content. However, the goal of MCC is to move towards Universal Design, where all course materials are accessible to the fullest extent possible.

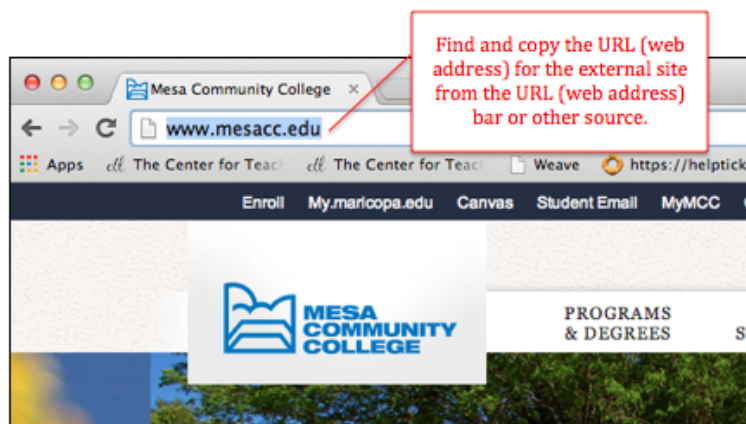
Use this [Course Accessibility Checklist](#) to assist you in making your materials accessible to all students.

Steps:

1. **Go to WAVE:** <http://wave.webaim.org> from your web browser.




2. **Copy the URL** (web address) to the external site you wish to run through WAVE.



3. **Paste the URL** in the WAVE window.



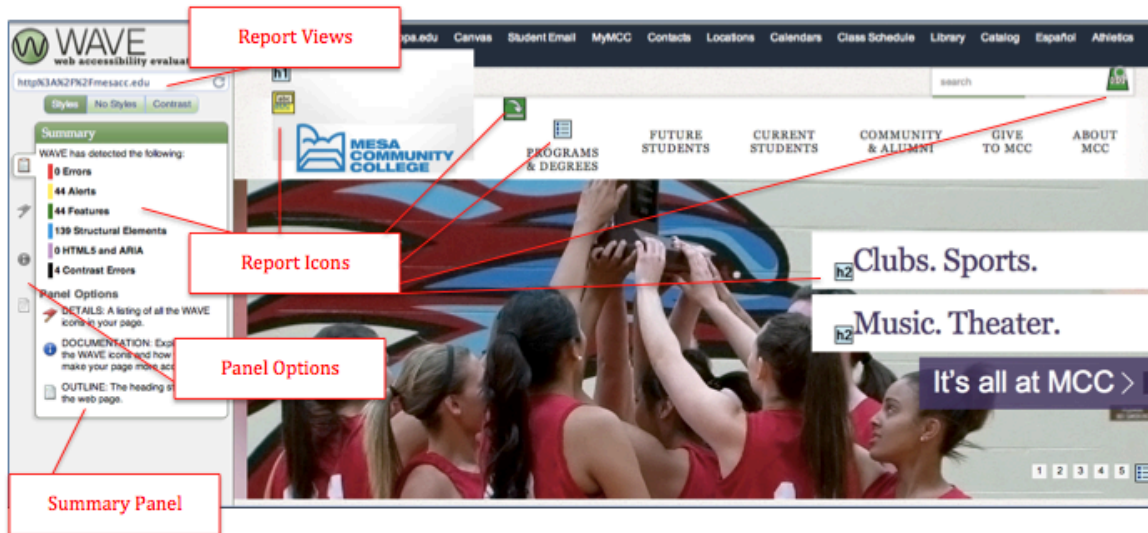
4. **Click the advance arrow**  to run and view the WAVE Accessibility Report.

Note: WAVE should work with any web browser, but Firefox is recommended.

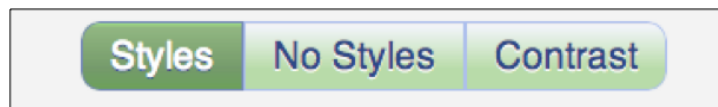
Reading the WAVE Accessibility Report

The Report Interface

WAVE will display the external website you pasted in the box with a **Summary Panel** automatically. This panel highlights and color codes all errors, alerts, Features (these are positives), etc.) in a series of icons and indicators.



WAVE displays the report in three views to help you evaluate the site for accessibility:



- The **Styles View** presents your page with the embedded accessibility icons and indicators. This is the default view AND has the most WAVE features enabled.
- The **No Styles View** displays your page with styles disabled and presents the reading and navigation order which keyboard-only and screen reader users will use to access the page.
- The **Contrast View** reports contrast issues on your page, based on accessibility guidelines.

Note: Use the Details Panel to review and find suggestions for each of these views.



Summary Panel Overview

The tabs or **icons** in the Summary Panel on the left can be clicked to review each indicator. The icons are categorized and correspond to areas throughout the site report so you can review the issues in context.

- **RED** icons indicate accessibility errors.
- **YELLOW** icons indicate alerts that should be reviewed.
- **GREEN** icons indicate accessibility features (positives).
- The other icons indicate other elements that you should look at.

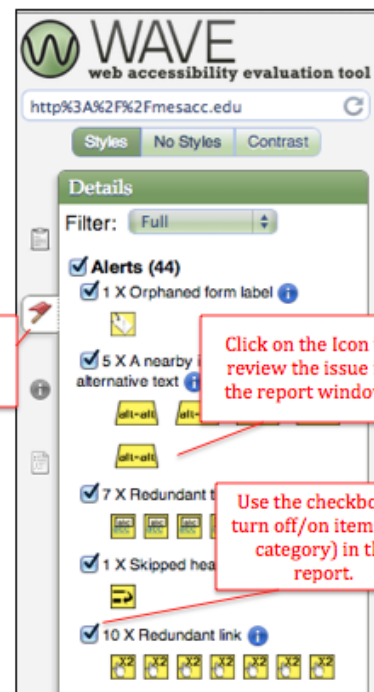
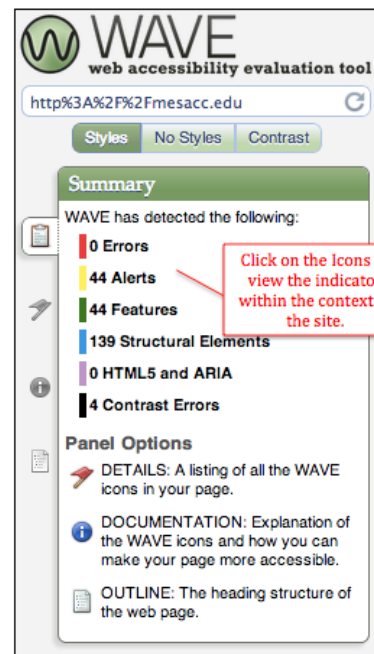
Note: You can view a brief summary of what each icon means by clicking it in the report and reading the pop-up window display. Select **More Information** to access details.



Details Page

The **Details Page** gives you a breakdown of ALL the indicators within the report window. The tabs or **icons** in the Details Panel on the left can be clicked to review each indicator. The icons are categorized and correspond to areas throughout the site report. Click the checkbox next to each category of icons to turn items on/off on.

Note: You can view a brief summary of what each icon means by clicking it in the report and reading the pop-up window display. Select **More Information** to access details. **Click the “i” Information Icon to open the Documentation Panel.**





Documentation Page

The **Documentation Page** gives you an explanation of all symbols used in the WAVE report.

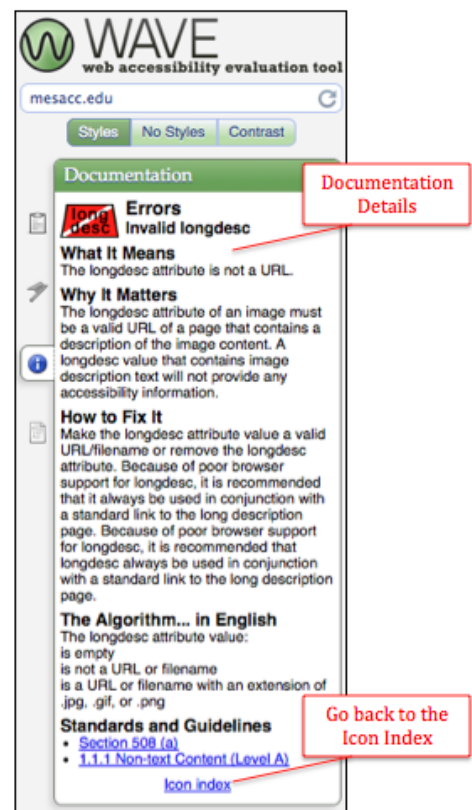
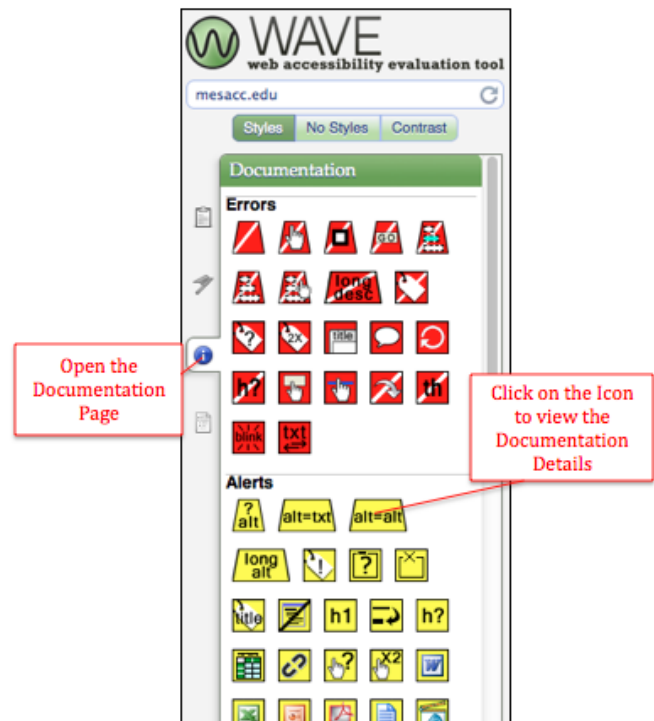
Note: If the icons do not display automatically click on **view Icon index** and the icons will appear (see illustration).

Interpreting the Index:

Mouse over an icon to see the name and click on an icon to see the detailed description of each indicator. Specifically it documents:

- **What it Means**
A brief description of the indicator.
- **Why it Matters**
An overview of how it affects accessibility.
- **How to Fix It**
A description of the correction process so that the site complies with accessibility standards.
- **The Algorithm...in English** (technical specs)
A description of the specific technical issue that were discovered by the tool.
- **Standards & Guidelines**
Sources of accessibility guidelines.

Note: Remember that you can only fix web content that you control. Content alternatives might be required if you are unable to make the necessary corrections to errors.





Outline Page

The **Outline page** gives you a breakdown of the Header information in the web page that WAVE evaluated when it ran its accessibility report. Headers are used to distinguish between elements by a structure of importance.

Beginning from the top of the page down, WAVE will display all the headers H1, H2, H3, H4, etc. and corresponding text. The tabs or **icons** in the Outline Panel on the left can be clicked to review each header indicator. The icons are categorized and correspond to areas throughout the site report.

Header Structure:


Review the flow to understand how the web page text will be contextualized for a person using a screen reader.

- Are the headers consistent for information of the same importance?
- Does this flow reflect the same intended importance and meaning conveyed by the visual information?

Additional Resources

WAVE Help - <http://wave.webaim.org/help>

WAVE Firefox Toolbar - <http://wave.webaim.org/toolbar/> (for reviewing password protected sites or dynamic content).

WAVE Bookmarklet - <http://wave.webaim.org/help> (right-click on the  WAVE icon to add the bookmarklet to your browser toolbar to make it easier to check web content as you browse the internet).

Disability Resources & Services - <http://www.mesacc.edu/disability-services/faculty-staff>

