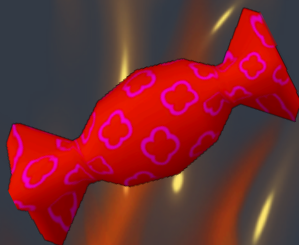


Tab 1



CLASSIFIED RESEARCH REPORT



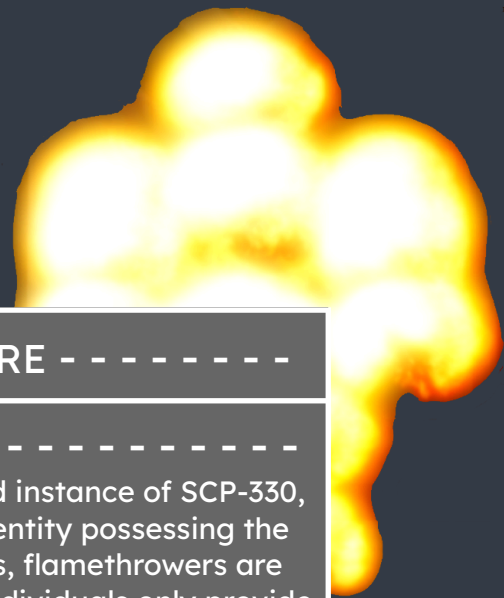
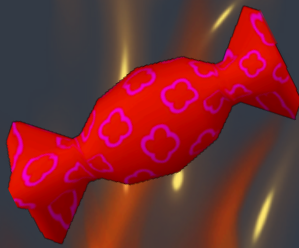
➤ SCIENTIST INFORMATION

- Username: SUPERZUESS
- Rank: Researcher
- Clearance: SC-2
- Research Report Number: #023
- Thanks to Bread_ToastisFood for assisting in gathering photos.



➤ REPORT INFORMATION

- Class-D[s]: 4
- Security Personnel: 2 - Vivid_Whitey & ImperialVezyr
- Mobile Task Force Personnel: 2 - GyNoMight & davud76247
- Spectator[s]: 4
- SCP: 457 x 330
- Containment Zone: MCZ



----- TESTING/INTERVIEW PROCEDURE -----

----- RESEARCH SUBJECT -----

Upon consumption of the red coloured with a pink patterned instance of SCP-330, an individual immediately ignites in flames. SCP-457 is an entity possessing the constant desire to gain “fuel”. In comparison to individuals, flamethrowers are known to be more efficient when fueling SCP-457 whereas individuals only provide SCP-457 with a certain amount of fuel. Yet, if an individual were to be ignited in flames, would they provide SCP-457 with more fuel in comparison to an unaffected individual?

----- HYPOTHESIS -----

I believe that SCP-457 will immediately notice a visible difference between the CD's, as some will be ignited in flames whilst others are not. As such, SCP-457 may immediately target the CD's which are ignited in flames, as the elevated heat is SCP-457's fuel source. Since SCP-457 demonstrates a preference towards flamethrowers, as they allow SCP-457 to gain more fuel due to their 'constant' supply of the heat, as such I believe the same may apply to the CD's which are enveloped in flames.

----- PROCEDURAL STATEMENT -----

----- STATEMENT -----

“I **agree** that I have followed all testing procedures and regulations throughout the duration of this test. I also understand that if a breach of procedure/regulation were to occur during this test that I may and will be punished.”

SIGNATURE:


SUPERZUESS

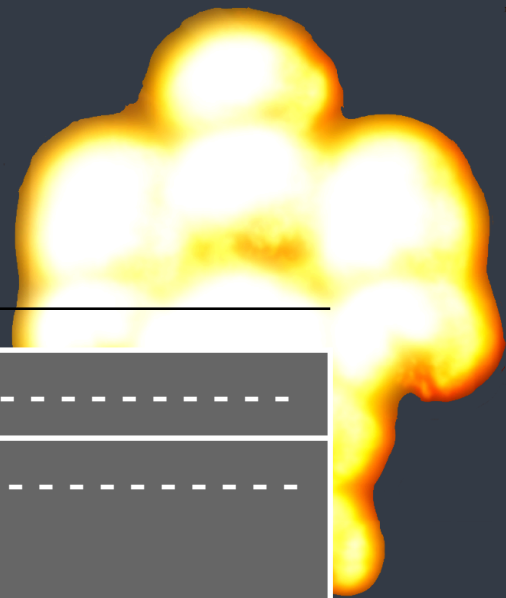
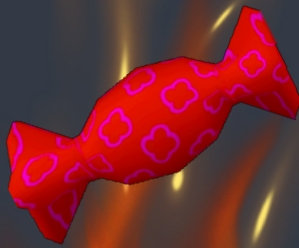
I **required permission** to complete this test. Evidence of approval -



Peelyparadise | AEST 1/9/25, 12:45 AM

Seems good to me.

Approved 



----- METHOD -----

----- TESTING PROCEDURES -----

Before

Before being briefed at Site-Epsilon, I will request that an escort acquires SCP-330 & SCP-500 from Theta. (Note : SCP-500 will be utilized by CD's in an attempt to acquire the specific SCP-330 instance.)

Once the C-9 operative finishes their brief outside SCP-457's containment chamber, I will announce the following brief to the CD's.

(I will select two CD's) - "You two will be in the first group, on my command you will each grab two instances of SCP-330 then show them both to me.

The aim is to acquire a specific instance, the red instance.

If you do not acquire it, then consume an instance of SCP-500 and retry.

Repeat this process until you gain the correct instance.

Once you both have the correct instance, please wait until the airlock opens once you are inside, consume it.

As for the other group, please remain patient whilst the first group obtains the SCP-330 instance.

I want you two to enter alongside the affected individuals.

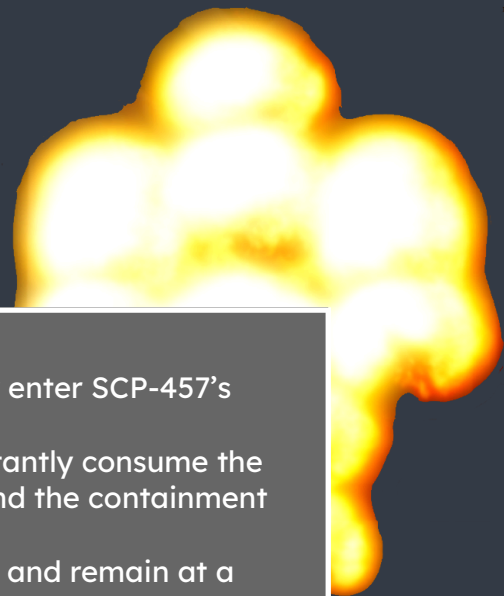
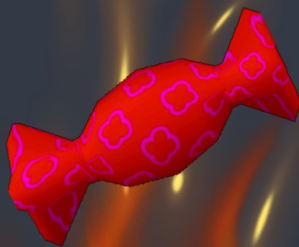
As a side note, do not use a fire extinguisher whilst within SCP-457's containment chamber, please.

Do you each understand what to do? If not, now is the time to ask questions."

(Any questions proposed by the CD's will be clarified.)

The CD's will then be taken towards the front of the airlock, where I will instruct the two chosen CD's to acquire the correct instance of SCP-330, ensuring they obtain the correct instance.

Once the two CD's have acquired the correct instance, I will head to the viewing area and once I am ready the test will commence as the CD's will enter the airlock and then enter SCP-457's containment chamber.



During

Once the airlock opens, both groups of CD's will immediately enter SCP-457's containment chamber.

The two CD's with the fire-inducing SCP-330 instance will instantly consume the instance, becoming enveloped in flames whilst running around the containment chamber.

Whereas the other three unaffected CD's will split from them and remain at a distance anyway as they move around the containment chamber.

SCP-457's immediate behaviour will be recorded and detailed, such as if SCP-457 targets a specific individual/s or if SCP-457 is unphased by the flame induced CD's.

I will also closely observe if SCP-457 'grows' larger than normal when it neutralizes the flame induced CD's.

Any noticeable events which occur will also be noted.

Once each CD has died, the test will be concluded and I will alert the escorts that the test is over.

If SCP-457 attempts to breach during the test, the test will immediately be cancelled and I, alongside any spectators, will leave through EPS as soon as possible without announcing the event on the radio as per the handbook instructs.

After

Once the test has been concluded, I alongside any spectators will be escorted out of the observation area and immediately exit the Medium Containment Zone as well as Site-Epsilon.

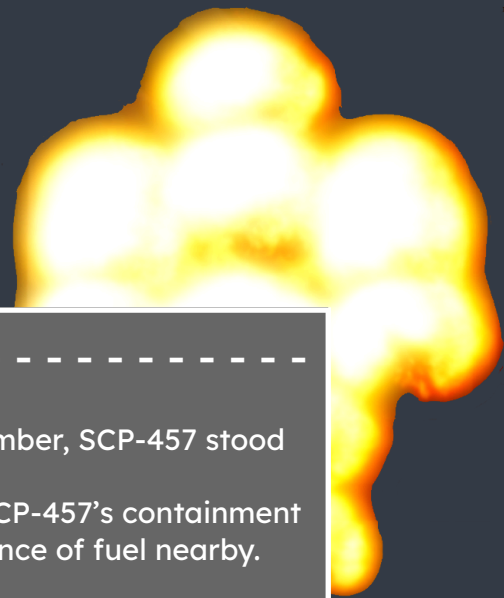
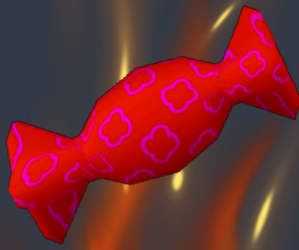
- - - - - POSSIBLE SCENARIOS - - - - -

Scenario A: SCP-457 is unphased by the CD's on fire, not targeting them, instead attacking all the CD's at random, as usual. Thus indicating that SCP-457 does not have a preference towards ignited CD's

Scenario B: SCP-457 indicates a preference towards the fire induced CD's, as SCP-457 targets them, ignoring the other CD's as it seeks the source of fuel which would cause SCP-457 to become more powerful.

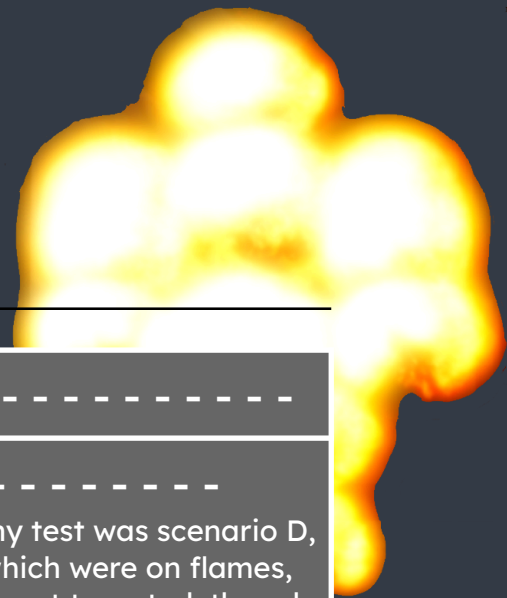
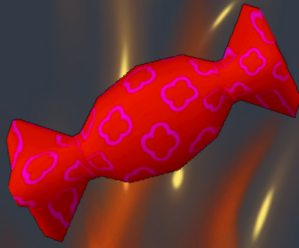
Scenario C: SCP-457 attacks the individuals who are not in flames but does not attack the individuals enveloped in flames due to SCP-330's anomalous properties. SCP-457 may be intrigued by the sight of the CD's, resembling similarities to itself and attempt to interact with them without hostile intent.

Scenario D: SCP-457 indicates a preference towards the fire induced CD's, but continues to attack the unaffected CD's at the same time, demonstrating a preference towards the ignited CD's, but not continuously targeting them as it still attacks the other CD's if they get too close.



- - - - - TESTING RESULTS - - - - -

- Prior to the CD's entering SCP-457's containment chamber, SCP-457 stood stationary, observing me alongside the spectators.
- Although, as the airlock was about to open towards SCP-457's containment chamber, it approached the airlock, sensing the presence of fuel nearby.
- As the four CD's entered SCP-457's containment chamber, SCP-457 immediately attacked the two non-ignited CD's, setting them alight. As the two ignited individuals were able to dodge SCP-457 due to the increased speed which they anomalously had gained from the SCP-330 fire inducing instance.
- SCP-457 then further engulfed one of the ignited CD's in flames, as they ran around. SCP-457 then targeted the other ignited CD, successfully engulfing them in flames as well. At the same time, one of the unaffected CD's were also ignited by SCP-457 which resulted in their death after a couple seconds.
- SCP-457 then attempted to target both of the ignited CD's whom were affected by SCP-330, ignoring the unaffected CD whom remained on the opposite side of the chamber.
- As SCP-457 chased after one of the ignited CD's, it used its anomalous firebolt ability, firing it towards the other ignited CD, across the containment chamber. This caused the CD to become enveloped in SCP-457's flames, which SCP-457 chased after the newly burning CD to finish them off, successfully doing so.
- SCP-457 then began attacking the other SCP-330 affected CD, as they ran away from SCP-457, eventually chasing them and killing them.
- Then SCP-457 attempted to use its firebolt ability again, yet missed but eventually killed the individual.
- Once all the CD's had been neutralized by SCP-457, I attempted to converse with SCP-457, the following is a direct transcript.
"SCP-457 may I ask you a question?" - SUPERZUESS
"IS THAT IT, PAWNS?"
"Did you notice any fuel differences between the individuals?"
(Whilst awaiting for an answer, an exploiter flung me out of the containment chamber. However, I was teleported back by Grydor and I was told by the C-9 that SCP-457 responded by stating something along the lines of "They all burned the same.")
- After gathering the available information, I concluded the test and exited the Medium Containment Zone.



----- RESULTS -----

----- CONCLUSION -----

According to my results, the scenario that occurred during my test was scenario D, as SCP-457 demonstrated a preference towards the CD's which were on flames, mainly targeting them whilst the other unaffected CD's were not targeted, though still attacked if they were in a close vicinity with SCP-457.

My hypothesis was correct, as SCP-457 certainly reacted differently, noticing a difference between the CD's such as a fuel difference. As stated above, SCP-457 targeted the ignited CD's, as they were its main focus due to them providing more fuel in comparison to the unaffected CD's since their heat is elevated.

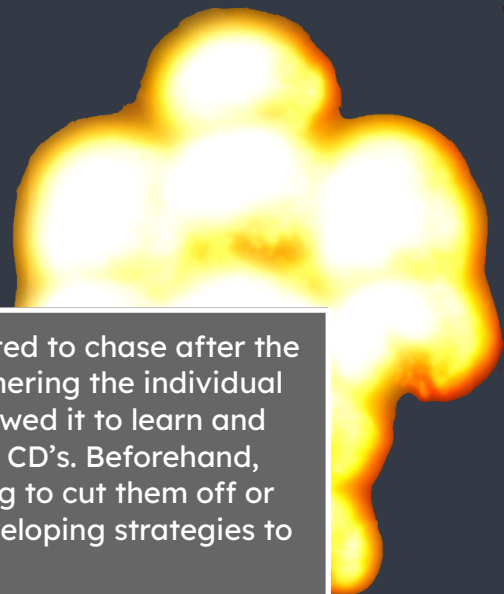
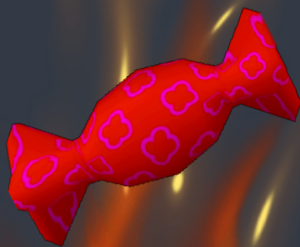
Whilst the CD's remained within the airlock, SCP-457 visibly sensed them, either determining them by gaining an understanding that most of the time, when individuals appear in the viewing area, others will appear from the airlock to supply SCP-457 with fuel. I also believe that SCP-457 may be able to sense nearby fuel sources as SCP-457 may possess infrared detection to seek out and determine individuals who are emitting the most amount of heat, to gain the most amount of fuel. This could be possibly tested further, to determine if SCP-457 truly does possess the ability to detect infrared waves emitted by individuals.

SCP-457 seemed to immediately notice the difference between the group of CD's, as it engulfed one of the anomalously affected ones, causing them to be further ignited in flames, damaging them.

At the same time, one of the unaffected CD's also caught on fire as they got in the way, causing them to promptly become deceased. Thus allowing SCP-457 to reach its second stage.

As SCP-457 attempted to target both the anomalously affected CD's afterwards, it ignored the unaffected CD, even though they were standing still and were an easy target. Instead, focusing on the CD's enveloped in flames, as it likely understood they were significantly more valuable, fuel wise.

As such, when both separated, SCP-457 remained attempting to chase after one of the affected CD's whilst then using its firebolt ability to ignite the other SCP-330 affected CD. Then, SCP-457 diverted its attention to the CD which had been attacked to ensure their death and gain the fuel. I am unable to fully determine if SCP-457 gained more fuel when the SCP-330 affected CD died, as I couldn't fully observe and compare the differences, but I assume that SCP-457 gained more fuel when it 'consumed' the anomalously affected as flamethrowers emit more fuel for SCP-457 so it is a highly likely assumption that an individual that is ignited due to the fire enveloping instance of SCP-330.



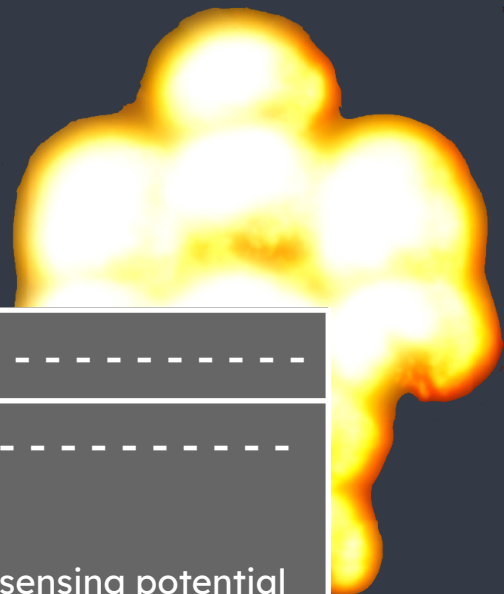
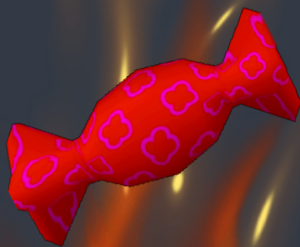
After ensuring the first ignited CD's death, SCP-457 attempted to chase after the other anomalously ignited CD, eventually chasing and cornering the individual resulting in their death, as its heightened intelligence allowed it to learn and develop strategies to ensure the deaths of the remaining CD's. Beforehand, SCP-457 was chasing the CD's from behind, not attempting to cut them off or corner them, whereas when it became more intelligent, developing strategies to ignite the CD's.

After the death of the last anomalously affected CD, SCP-457's attention turned towards the final remaining CD, whom eventually was killed by SCP-457. This was expected as SCP-457's hostile nature due to its constant hunger for fuel to become more powerful causes it to constantly attack anyone within its vicinity.

During my attempted questioning of SCP-457, SCP-457 regarded I alongside the spectators and escorts as pawns, indicating that SCP-457 views itself as an entity with a powerful status in comparison to us humans, even though it is contained securely within its specialized containment chamber, controlled by us humans.

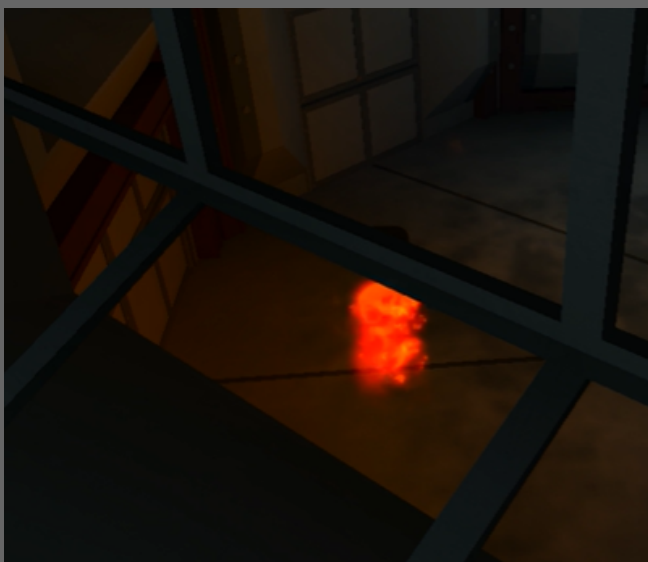
Alongside this, when I attempted to confirm if SCP-457 noticed any differences between the CD's, SCP-457's response was ominous, "They all burned the same." This statement did not confirm nor deny if SCP-457 noticed a change, as SCP-457 is known to be non-cooperative when conversing with personnel as such this response was semi-expected. Although, SCP-457's behaviour during the test suggests that SCP-457 did notice a change as it continued to target and focus upon the CD's that were anomalously enveloped in flames.

I do believe that my theory upon SCP-457 being able to determine the heat difference between individuals is due to it using infrared detection capabilities, as it is an entity solely made out of fire which could be able to detect an elevated temperature of an individual to understand if they possess more fuel so that SCP-457 is able to target that individual to become more powerful.

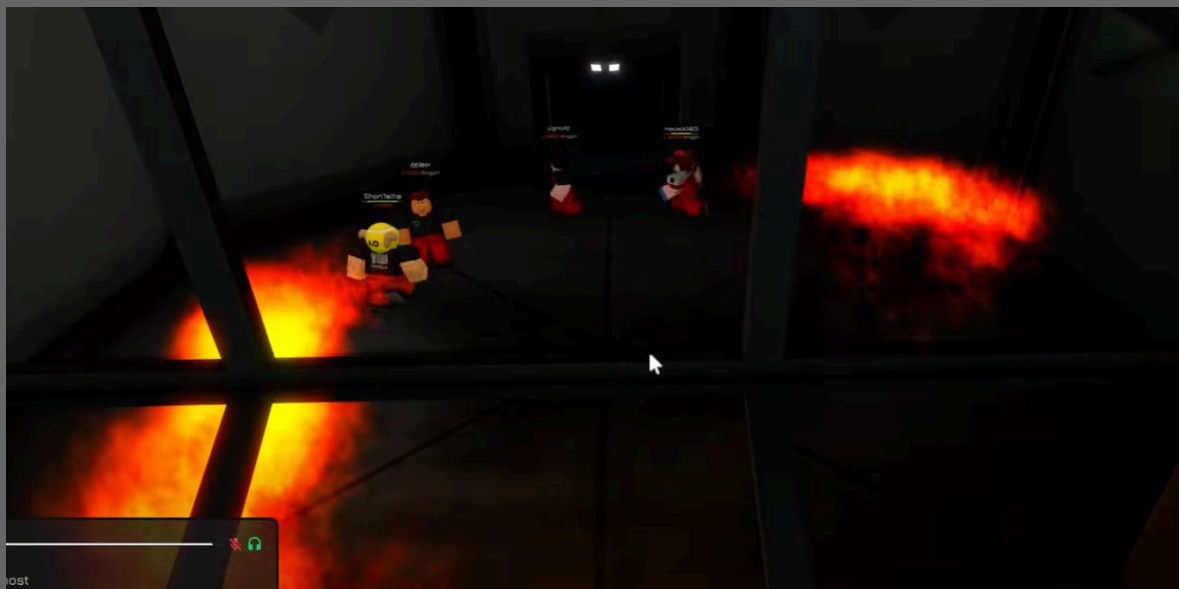


----- EVIDENCE -----

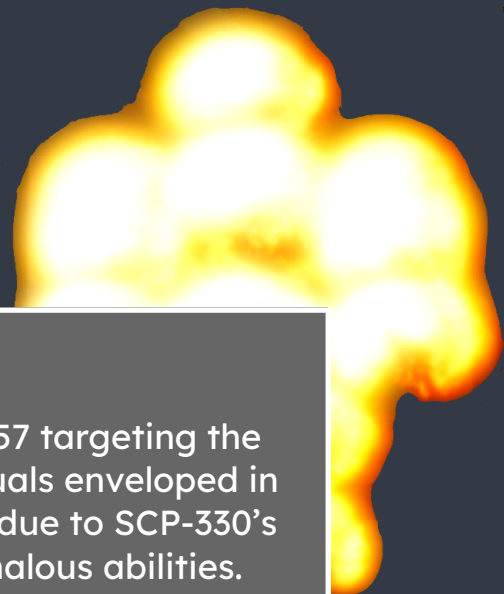
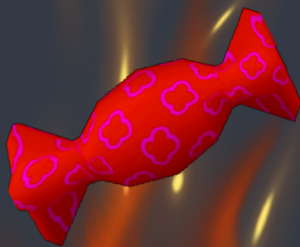
----- PHOTOS -----



SCP-457 sensing potential fuel nearby, standing close towards the airlock, understanding that individuals will enter its chamber.



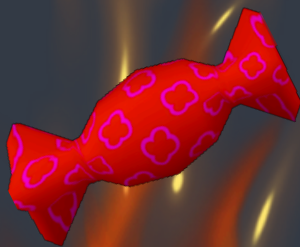
SCP-457 immediately attacked the CD's once they entered the containment chamber.



SCP-457 targeting the individuals enveloped in flames due to SCP-330's anomalous abilities.



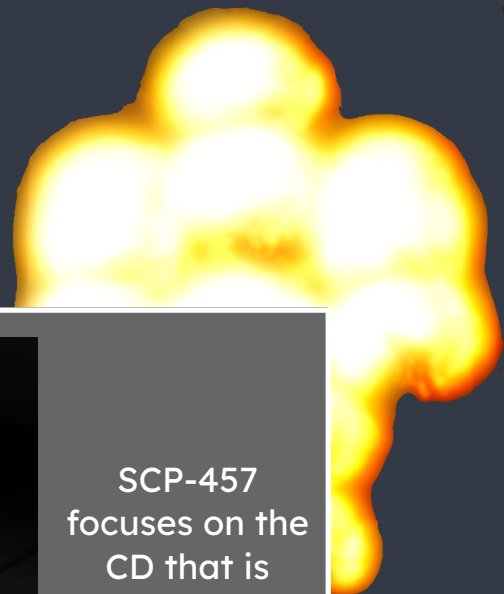
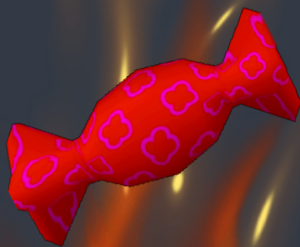
The first death, a non-affected CD. SCP-457 transformed into its second stage.



SCP-457 utilizing its firebolt ability to attack one of the anomalously affected CDs.



SCP-457 ensures the death of one of the anomalously affected CDs, gaining the additional fuel.



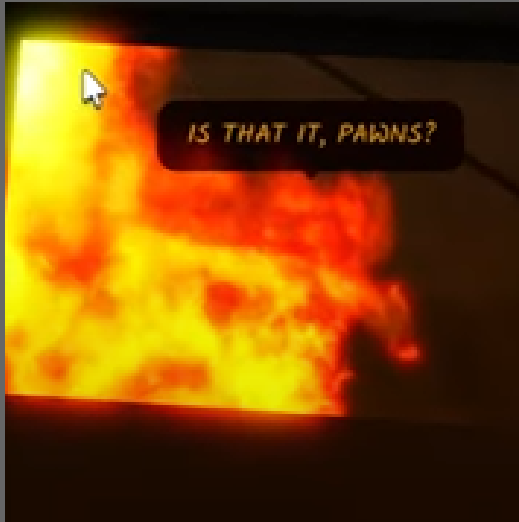
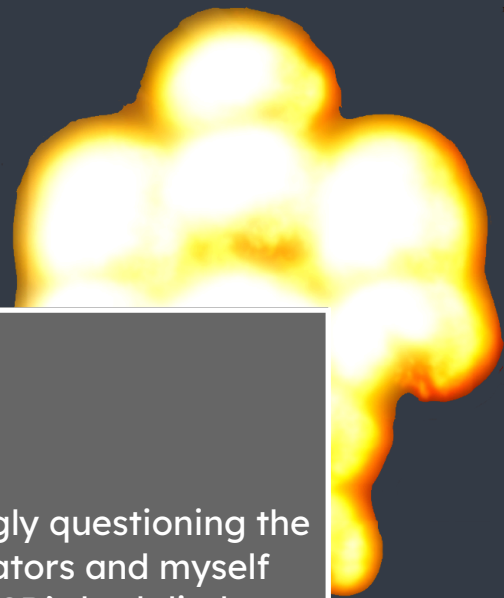
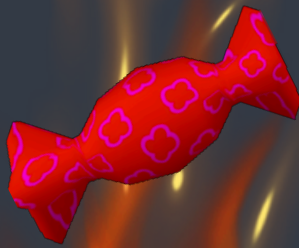
SCP-457 focuses on the CD that is enveloped in flames due to SCP-330's anomalous ability.



The last anomalously affected CD dying after being targeted by SCP-457.



After the death of the previous CD, SCP-457 continued to attack the remaining CD until they were eventually killed.



SCP-457 mockingly questioning the escorts, spectators and myself after all the CD's had died.

