

REPUBLIC OF THE PHILIPPINES
UNIVERSITY OF SOUTHERN MINDANAO
KABACAN, COTABATO

GRADUATE SCHOOL



S.2. Apparatuses, tools and materials conform with the standards and the specifications required for the subjects in accordance with the CMO of the Program

Master of Science in Animal Science

S.2. Apparatuses, tools and materials conform with the standards and the specifications required for the subjects in accordance with the CMO of the Program.



Republic of the Philippines
OFFICE OF THE PRESIDENT
COMMISSION ON HIGHER EDUCATION



CHED MEMORANDUM ORDER (CMO)
NO. 25;
Series of 2015

SUBJECT : REVISED POLICIES, STANDARDS, AND GUIDELINES FOR BACHELOR OF SCIENCE IN COMPUTER SCIENCE (BSCS), BACHELOR OF SCIENCE IN INFORMATION SYSTEMS (BSIS), AND BACHELOR OF SCIENCE IN INFORMATION TECHNOLOGY (BSIT) PROGRAMS

In accordance with the pertinent provisions of Republic Act (RA) No. 7722, otherwise known as the "Higher Education Act of 1994," in pursuance of an outcomes-based quality assurance system as advocated under CMO 46 s. 2012, and by virtue of the Commission en banc Resolution No. 268-2015 dated May 25, 2015 the following policies, standards and guidelines (PSGs) are hereby adopted and promulgated by the Commission.

ARTICLE I INTRODUCTION

Section 1 Rationale

Based on the Guidelines for the Implementation of CMO 46 s 2012, this PSG implements the "shift to learning competency-based standards/outcomes-based education." It specifies the 'core competencies' expected of graduates of *Bachelor of Science in Computer Science (BSCS)*, *Bachelor of Science in Information Systems (BSIS)*, and *Bachelor of Science in Information Technology (BSIT)*, "regardless of the type of HEI they graduate from." However, in "recognition of the spirit of outcomes-based education and ... of the typology of HEIs," this PSG also provides "ample space for HEIs to innovate in the curriculum in line with the assessment of how best to achieve learning outcomes in their particular contexts and their respective missions ..."

The field of computing is ever dynamic; its advancement and development had been rapid and its evolution is a continuous process (O'Brien, 2008). To face the challenges of advancement, the Commission recognizes the need to be responsive to the current needs of the country. It is essential and important that the country's computing capability be continually developed and strengthened to be at par globally.

It is the objective of the Commission to develop and promote the Policies, Standards and Guidelines (PSG) for BSCS, BSIS and BSIT, to provide a minimum standard for Higher Education Institutions (HEIs) offering or intending to offer these programs. The PSG is developed with consultations from all stakeholders, from the academe to industry (Sarmiento, 2009).

The PSG contains provisions that cultivate the culture of excellence in offering these programs. This is in line with the vision of the Commission to have HEIs produce competent graduates that shall cater to the needs of the industry. The PSG is also designed for all HEIs to exercise their innovativeness and creativity in the development of their curricula in the offering of BSCS, BSIS, and BSIT programs (RA 7722, 1994).

Higher Education Development Center Building, C.P. Garcia Ave., UP Campus, Diliman, Quezon City, Philippines
Web Site: www.ched.gov.ph Tel. Nos. 441-1177, 385-4391, 441-1169, 441-1149, 441-1170, 441-1216, 392-5296

**ARTICLE II
AUTHORITY TO OPERATE**

Section 2 Government Recognition

All Higher Education Institutions (HEIs) including private HEIs, State Universities and Colleges (SUCs), and Local Universities and Colleges (LUCs) intending to offer BSCS, BSIS, and BSIT must first secure proper authority from the Commission in accordance with this PSG. All HEIs with existing BSCS, BSIS, and/or BSIT programs are required to shift to outcomes-based approach pursuant to this PSG and must inform the Commission of such shift. SUCs and LUCs should likewise strictly adhere to the provisions in these policies, standards and guidelines.

**ARTICLE III
GENERAL PROVISIONS**

Section 3 The succeeding articles provide minimum standards and other requirements and prescriptions. The minimum standards for each program are expressed as minimum sets of desired program outcomes which are given in Article IV Section 6. The Commission designed **sample** curricula to attain such outcomes and these are shown in Article V Section 9. The total number of units for each program is here prescribed as the "minimum unit requirement" under Section 13 of RA 7722. In designing the curricula, the Commission employed curriculum maps which are shown in Article V Section 10 as **sample** curriculum map.

Using a learner-centered/outcomes-based approach, the Commission provided sample curricula delivery methods shown in Article V Section 11. The sample course syllabi given in Article V Section 12 show some of these methods.

Based on the curricula and the means of their delivery, the Commission determined the physical resource requirements for the library, laboratories and other facilities and the human resource requirements in terms of administration and faculty, as indicated in Article VI.

Section 4 The HEIs are allowed to design curricula suited to their own contexts and missions provided that they can demonstrate that the same leads to the attainment of the required minimum set of outcomes, albeit by a different route. In the same vein, they have latitude in terms of curriculum delivery and in terms of specification and deployment of human and physical resources as long as they can show that the attainment of the program outcomes and satisfaction of program educational objectives can be assured by the alternative means they propose.

The HEIs can use the **CHED Implementation Handbook for Outcomes-Based Education (OBE) and the Institutional Sustainability Assessment (ISA)** as a guide in complying with Sections 16, 17 and 22 of Article VII, hereof.





**Globe
Business**



32nd Street corner 7th Avenue
Bonifacio Global City
Taguig, Philippines 1634
16th Floor, The Globe Tower Cebu,
Samar Loop corner Panay Road,
Cebu Business Park, Cebu City 6000



www.business.globe.com.ph



www.facebook.com/globebusiness



@globe_business

SOA Number: I000073620924

TIN: 000-360-916-000 VAT Registered

Statement of Account

878295322



University Of Southern Mindanao

Gf
Ictc Building
University Of Southern Mindanao
Kabacan North Cotabato
9407 Philippines
Attn : Xenia Lanoy

COMMUNICATIONALS, INC.

Statement Summary

Previous Bill Charges	Amount
Amount Due from Previous Bill	179,200.00
Remaining Balance from Previous Bill	P179,200.00
Current Bill Charges	
Monthly Recurring Fee (MRF)	80,000.00
VAT	9,600.00
Total Current Bill	P89,600.00

TOTAL AMOUNT DUE: P268,800.00

Bill Number **28**
Bill Period **01 Feb 21 to 28 Feb 21**
Account Number **878295322**

Previous Balance Due Immediately	179,200.00
Current Balance Due Date Mar 21, 2021	89,600.00
Total Amount Due	P268,800.00

IMPORTANT INFORMATION

Your Account Statement for this bill period covers monthly recurring fee for fixed-based services from March 01 to 31, 2021 and actual usage charges for usage-based services from February 01 to 29, 2021.

For questions about your billing statement or any other concern, please let us know. You may contact us through our Globe Business Support (GBS) at e-mail enterprisesupport@globe.com.ph. Our GBS representatives will be available to assist you from 8AM to 5PM Mondays thru Fridays (excluding holidays). If no error is reported within 30 days from billing date, the bill will be considered true and correct.

In compliance with RA 9510 or the Credit Information Systems Act (CISA), we'll be sending basic credit information about your Globe account/s, including any overdue balance to the Credit Information Corp. (CIC), a state-run agency, on a monthly basis. We at Globe value your awareness on these matters. Learn more at www.creditinfo.gov.ph.

Please examine your Statement of Account immediately. If no discrepancy is reported within 30 days from this bill's cut-off date, the contents of this statement will be considered correct. Thank you.

You may have overlooked payment of your previous bill. Please pay your overdue charges immediately.

Payments made after the previous bill period's due date may not be reflected in this bill.

University Of Southern Mindanao

Gf
Ictc Building
University Of Southern Mindanao
Kabacan North Cotabato
9407 Philippines
Attn : Xenia Lanoy

SERVICE	ACCOUNT NUMBER	BILL NUMBER	BILL PERIOD	PAYMENT DUE DATE:	AMOUNT DUE:
Globe Landline/ Broadband	878295322	28	01 Feb 21 to 28 Feb 21	Due Immediately	179,200.00
				Mar 21, 2021	89,600.00
				TOTAL AMOUNT DUE:	P268,800.00



878295322 *UNIVERSITY OF SOUTH*000026880000

Innovate Communications, Inc.
A wholly-owned subsidiary of Globe Telecom, Inc.

MONTHLY RECURRING FEE (MRF)

Service Id	Rental Period	Description	Speed	Amount
IC-APZ-2349	03/01/21-03/31/21	DIRECT INTERNET - ICTC BUILDING UNIVERSITY OF SOUTHERN MINDANAO KABACA NORTH COTABATO		80,000.00
IC-APZ-2349 IC-APZ-2349	03/01/21-03/31/21 03/01/21-03/31/21	DIRECT INTERNET MRC EQUIPMENT (STRAIGHT LEASE)	60 Mbps	0.00
Total Monthly Recurring Fee (MRF)				80,000.00

SUMMARY

	MRC(PHP)	OTC(PHP)	Usage(PHP)	Total(PHP)
DIRECT INTERNET	80,000.00	0.00	0.00	80,000.00
Total Summary	80,000.00	0.00	0.00	80,000.00

BIR Permit No.: 1912_0126_PTU_CAS_000741
 Series from IN000000000001 to IN999999999999
 Effectivity Date: December 01, 2019
 Valid Until: November 30, 2024

Section 18 its proposed curriculum and its justification including a curriculum map.

Section 19 Proposed performance indicators for each outcome. Proposed measurement system for the level of attainment of each indicator.

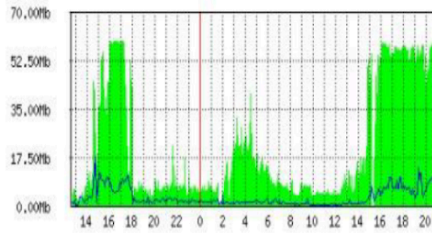


Internet Utilization in USM

Interface <WAN2> Statistics

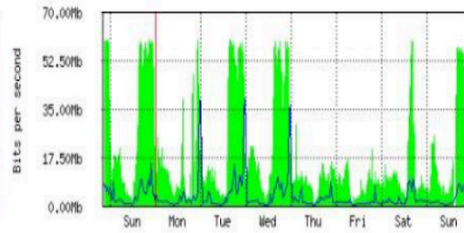
• Last update: Sun Jan 30 20:33:31 2011

"Daily" Graph (5 Minute Average)



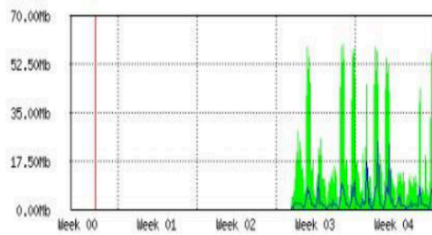
Max In: 60.08Mb; Average In: 20.71Mb; Current In: 58.97Mb;
Max Out: 17.80Mb; Average Out: 2.74Mb; Current Out: 9.16Mb;

"Weekly" Graph (30 Minute Average)



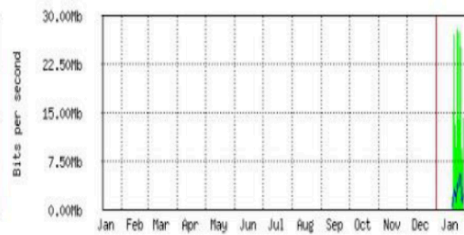
Max In: 60.46Mb; Average In: 19.15Mb; Current In: 50.72Mb;
Max Out: 39.15Mb; Average Out: 3.20Mb; Current Out: 7.08Mb;

"Monthly" Graph (2 Hour Average)



Max In: 60.04Mb; Average In: 18.32Mb; Current In: 54.48Mb;
Max Out: 24.12Mb; Average Out: 2.82Mb; Current Out: 6.21Mb;

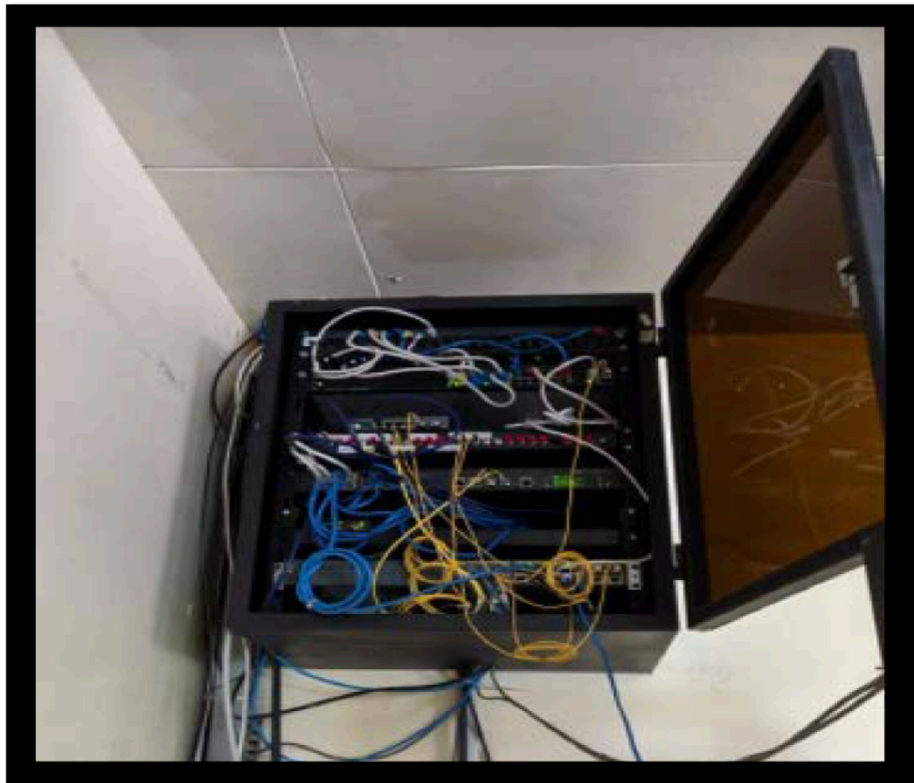
"Yearly" Graph (1 Day Average)

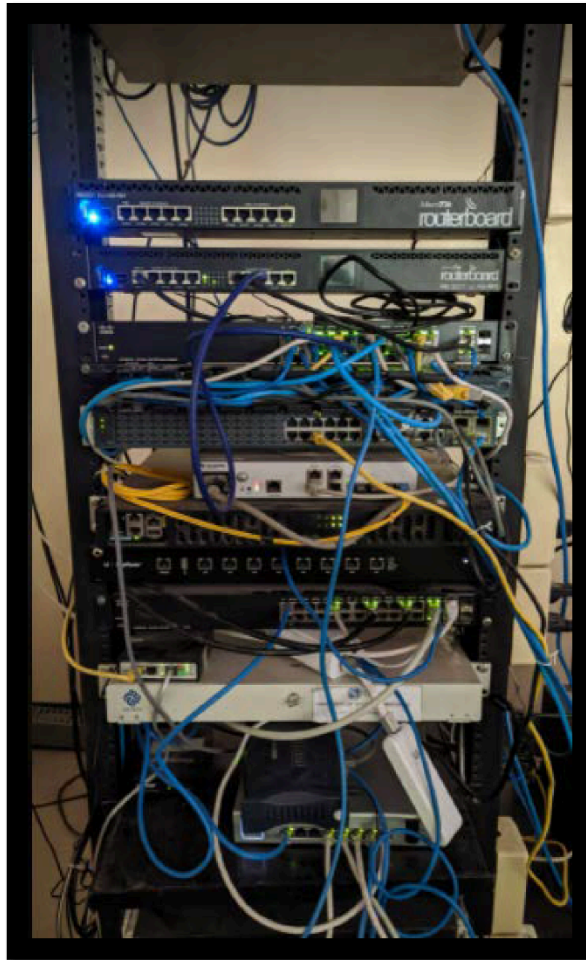


Max In: 28.09Mb; Average In: 16.91Mb; Current In: 14.09Mb;
Max Out: 5.41Mb; Average Out: 2.63Mb; Current Out: 2.24Mb;

Pictures showing the server inside each computer laboratories







Microsoft account security | Volume Licensing Service Center | Volume Licensing Service Center | Document Tracking System | New Tab

https://www.microsoft.com/Licensing/servicecenter/Downloads/DownloadsAndKeys.aspx

Sign out Microsoft

Microsoft Volume Licensing Service Center

Home Licenses Online Service Activation Downloads and Keys Software Assurance Subscriptions Administration Help

Downloads and Keys

Export all keys: CSV 1 - 28 of 28 items

Filter

- All Products (64)
- Office (35)
- Software Assurance (6)
- Windows (28)

Product	Description	Download	Key		
Product Keys					
Some products require setup or product activation keys. Find out more about different types of Product keys and Volume Activation and Activating Online Services					
<input checked="" type="checkbox"/> Windows 10 Professional					
License ID	Organization	Key	Type	Activations or Seats	Status
66213799	University of Southern Mindanao	WFNMJ-KFRGK-FKGWR-3DTD9-3RR9M	MAK	0/250	
Windows 10 Professional Features on Demand	Description	Download	Key		
Windows 10 Professional KN	Description	Download	Key		
Windows 10 Professional Language Pack	Description	Download	Key		
Windows 10 Professional N	Description	Download	Key		
Windows 7 Local Pack	Description	Download	Key		
Windows 7 Professional	Description	Download	Key		
Windows 7 Professional K	Description	Download	Key		
Windows 7 Professional K Upgrade	Description	Download	Key		

Windows 10 Professional

Windows 10 Professional Features on Demand

Windows 10 Professional KN

Windows 10 Professional Language Pack

Windows 10 Professional N

Windows 7 Local Pack

Windows 7 Professional

Windows 7 Professional K

Windows 7 Professional K Upgrade

Start | Taskbar icons | System tray: 11:16 AM