

Community Links Academy Trust



Education Links: Early Help, Safeguarding and Child Protection Policy

CHILD PROTECTION AND SAFEGUARDING POLICY FOR COMMUNITY LINKS ACADEMY TRUST

APPROVED BY GOVERNORS

DATE POLICY TO BE REVIEWED: [04/2021](#)

School Designated Safeguarding Lead	Sophie Groenvynck
School Deputy Safeguarding Lead	Gary Partridge
School Deputy Safeguarding Lead	Deborah Gallagher
School Designated Safeguarding Governor	Denice Sealy
Chair of Governors /Trustees	Arfa Butt

This policy is available on our school website and also on request from the school office. We inform parents and carers about this policy when their children join our school and through the school newsletter or social media.

Contents

- 1. Introduction**
- 2. Statutory Framework**
- 3. School Roles and responsibilities**
- 4. Types of abuse and specific safeguarding Issues**
- 5. School Procedures**
- 6. Continuous Professional Development**
- 7. Professional Confidentiality**
- 8. Record keeping and Information Sharing**
- 9. Interagency Working**
- 10. Allegations about members of the children's workforce**
- 11. Whistleblowing**

Appendix 1 - Early Help Offer

Appendix 2 - Recording Format

Appendix 3 - Body Plans

Appendix 4 - Document History

CHILD PROTECTION AND SAFEGUARDING POLICY FOR COMMUNITY LINKS ACADEMY TRUST

1. Introduction

*“Schools and colleges and their staff are an important part of the wider safeguarding system for children. Safeguarding and promoting the welfare of children is **everyone’s** responsibility. **Everyone** who comes into contact with children and their families has a role to play. In order to fulfil this responsibility effectively, all professionals should make sure their approach is child-centred. This means they should consider at all times, what is in the **best interests of the child**”.*

(Keeping Children Safe in Education - DfE, September 2018)

This Child Protection and Safeguarding Policy is for all school staff, parents, governors, volunteers and the wider school community. It forms part of the safeguarding arrangements for our school and should be read along with the school’s

Safer Recruitment Policy,
Staff Code of Conduct Policy,
Physical Intervention Policy,
Anti-Bullying Policy,
Promoting Positive Behaviour Policy,
Health and Safety Policy,
Educational Visit and Residential Policy ,
Online Safety Policy,
Social Media Policy and Photography Policy,
Appropriate Touch policy,
Visitor and Visiting Speakers policy

Our school is committed to safeguarding children and to create a culture of vigilance in school. This policy should also be read in conjunction with Keeping Children Safe in Education (DfE, 2018).

Safeguarding and promoting the welfare of children is defined in Keeping Children Safe in Education 2018 as:

- Protecting children from maltreatment
- Preventing impairment of children’s health or development
- Ensuring that children grow up in circumstances consistent with the provision of safe and effective care
- Taking action to enable all children to have the best outcomes

2. Statutory framework

The Education Act 2002 Section 175, (*Section 157 for Independent schools*) places a statutory responsibility on the governing body to have policies and procedures in place that safeguard and promote the welfare of children who are pupils of the school.

The development of appropriate procedures and the monitoring of good practice in the London Borough of Newham are the responsibilities of the Newham Safeguarding Children Board (NSCB) In Newham all professionals must work in accordance with the London Child Protection Procedures.

Our school also works in accordance with the following legislation and guidance:

[Keeping Children Safe in Education \(DfE September 2020\)](#)

[Working Together to Safeguard Children \(HMG, 2018\)](#)

Education Act 2002

[Counter-Terrorism and Security Act \(HMG, 2015\)](#)

[The Prevent duty Departmental advice for schools and childcare providers \(DfE 2015\)](#)

[Prevent Duty Guidance for Further Education Establishments in England and Wales \(HMG 2015\)](#)

[Serious Crime Act 2015](#) (Home Office, 2015)

Sexual Offences Act (2003)

Education (Pupil Registration) Regulations 2006

General Data Protection Regulations 2018 (GDPR)

[What to do if you're worried a child is being abused](#) (HMG, 2015)

[Searching, screening and confiscation](#) (DfE, 2018)

Children Act 1989

Children Act 2004

Children and Social Work Act 2017

Modern Slavery Act 2015

The Homelessness Reduction Act 2017

[Preventing and Tackling Bullying \(DfE, 2017\)](#),

Female Genital Mutilation Act 2003 (S. 74 - Serious Crime Act 2015)

[Sexual violence and sexual harassment between children in schools and colleges](#) (DfE, 2017)

Information Sharing Advice for practitioners providing safeguarding services to children, young people, parents and carers. (DfE July 2018)

Advice on Whistleblowing in Maintained Schools (DfE 2014)

<https://www.gov.uk/guidance/whistleblowing-procedure-for-maintained-schools>

3. School roles and responsibilities

All adults working with or on behalf of children have a responsibility to protect them and to provide a safe environment that enables them to learn and achieve their full potential. However, there are identified key adults in schools and in the Local Authority who have specific responsibilities under child protection procedures. The names of those in our school with these specific responsibilities are shown on the front cover sheet of this policy. All staff in our school are familiar with the Early Help Offer. See Appendix 1.

3.1 The governing body

The governing body or Trustees has a responsibility to ensure that the policies, procedures and professional development and training in our school are effective and comply with the statutory requirements at all times.

It ensures that all required policies relating to child protection and safeguarding are in place and that the child protection policy reflects statutory and local guidance and is reviewed at least annually.

The governing body also ensures there are a named Designated Safeguarding Lead and Deputy Safeguarding Lead in place and that they have their safeguarding role explicitly in the job description and are trained for the role as set out in Keeping Children Safe in Education 2018.

The governing body ensures the school contributes fully to inter-agency working, in line with statutory and local guidance. It ensures that information is stored and shared appropriately and in accordance with the statutory requirements.

The governing body monitors to ensure that all staff members and volunteers undergo safeguarding and child protection training at induction and that it is then regularly updated. All staff members receive regular safeguarding and child protection updates, at least annually, to provide them with the relevant skills and up to date knowledge to keep our children safe. The governing body will also ensure that staff has the knowledge, skills and understanding of the additional vulnerabilities of looked after and previously looked after children to keep them safe.

The governing body ensures that children are taught to keep themselves safe, including online, ensuring that that appropriate filters and monitoring systems for online usage are in place in school. Our children will be taught how to keep themselves safe through teaching and learning opportunities as part of a rich and balanced curriculum.

The governing body and school leadership team are responsible for robust safer recruitment procedures that help to deter, reject or identify people who may abuse children. It adheres to statutory responsibilities to check adults working with children and has recruitment and selection procedures in place (see the school's 'Safer Recruitment' policy for further information). It also ensures that volunteers are appropriately supervised in school. We will undertake a risk assessment and use our professional judgement when deciding whether to obtain an enhanced DBS certificate for any volunteer undertaking unregulated activity.

3.2 The Designated Safeguarding Lead and Deputies

The Designated Safeguarding Lead (DSL) in school takes the lead responsibility for managing child protection referrals, safeguarding training and raising awareness of all child protection policies and procedures in school and that everyone in school, including temporary staff, volunteers and contractors are aware of these procedures and that they are followed at all times. They are a source of advice and support to other staff on child protection matters and make sure that timely referrals to Newham Triage Team are made in accordance with current London Child Protection Procedures. The Designated Safeguarding Lead (DSL) works with the local authority and other agencies as required. If for any reason the Designated Safeguarding Lead is unavailable, the Deputy Designated Safeguarding Lead will act in their absence.

In addition, in most cases homelessness would be considered in the context of children living with their families, however the Designated Safeguarding Lead (DSL) will be alert that some children may be homeless independently and this will require a different level of intervention and support.

3.3 The Principal

The Principal works in accordance with the requirements upon all school staff. In addition, the Principal ensures that all safeguarding policies and procedures adopted by the governing body are followed by all staff. The Principal will ensure that children are taught about safeguarding, including on-line as part of the broad and balanced curriculum.

The Principal will make sure that s/he is satisfied that any children on the school roll placed with an alternative education provider can meet the needs of the child(ren) and obtain written confirmation that the appropriate safeguarding checks have been carried out.

3.4 All school staff

Everyone at our school has a responsibility to provide a learning environment in which our children can feel safe to learn. All staff members are prepared to identify children who may benefit from early help and understand their role and responsibilities within this process. This includes identifying any emerging problems so appropriate support may be provided and in liaison with the Designated Safeguarding Lead (DSL) report any concerns. All staff members are aware of and follow school processes as set out in this policy and are aware of how to make a referral to the Newham Triage Team when there is a need to do so.

4. Types of abuse / specific safeguarding issues

“Somebody may abuse or neglect a child by inflicting harm or by failing to act to prevent harm. Children may be abused in a family or in an institutional or community setting by those known to them or, more rarely, by others. Abuse can take place wholly online, or technology may be used to facilitate offline abuse. They may be abused by an adult or adults or by another child or children”

Keeping Children Safe in Education (DfE, 2018)

The four main types of abuse referred to in Keeping Children Safe in Education are:

- o Physical
- o Emotional
- o Sexual
- o Neglect

Our school is aware of the signs of abuse and neglect so we are able to identify children who may be in need of help or protection. Within those four main types of abuse there are specific types of abuse that our school is alert to.

4.1 Child on child abuse

Our school may be the only stable, secure and safe place in the lives of children at risk of, or who have suffered harm. However, on occasions their behaviour may be challenging and defiant, or they may instead be withdrawn, or display abusive behaviours towards other children.

Child on child abuse can manifest itself in many ways. This may include bullying (including cyber bullying), online abuse, gender-based abuse, ‘sexting’ or sexually harmful behaviour. We do not tolerate any harmful behaviour in school and will take swift action to intervene where this occurs. We use the curriculum and all school events to help children understand, in an age-appropriate way, what abuse is and we encourage them to tell a trusted adult if someone is behaving in a way that makes them feel uncomfortable. Our school understands the different gender issues that can be prevalent when dealing with peer on peer abuse.

Education Links aims to deal with child on child abuse in a timely fashion and with the utmost seriousness. Policies which should be checked for specific information are

- Social Media Policy
- Online Safety Policy
- Bullying Policy
- Behaviour Policy.

4.2 Sexual Violence and Harassment

Sexual violence and harassment can occur between children of any age individually or in groups. Children who are victims of sexual violence and sexual harassment will likely find the experience stressful and distressing, and in all likelihood will adversely affect their educational attainment. Our school takes all victims seriously and they will be offered the appropriate support.

Our school will ensure that sexual violence and sexual harassment is not acceptable in any circumstances. We do not accept that it is 'just part of growing up' or a joke. Our school will manage such incidences in the same way by considering the need to undertake an immediate risk and needs assessment and as with any other child protection concern we will follow the same procedures.

4.2 Children with special educational needs and disabilities

Our school understands that children with special educational needs (SEN) and disabilities can face additional safeguarding challenges. Our school recognises that additional barriers can exist when recognising abuse and neglect in this group of children. These can include:

- o Assumptions that indicators of possible abuse such as behaviour, mood and injury relate to the child's disability, without further exploration;
- o Be more prone to peer group isolation than other children;
- o Children with SEN and disabilities can be disproportionately impacted by things like bullying, without outwardly showing signs
- o Communication barriers that make telling an adult difficult and
- o The requirement of personal or intimate care

Our school will consider these additional vulnerabilities and challenges in considering the safeguarding of our children.

4.3 Children Missing from Education (CME)

All children, regardless of their age, ability, aptitude and any special education needs they may have are entitled to a full-time education. Our school recognises that a child missing education is a potential indicator of abuse or neglect and will follow the school procedures for unauthorised absence and for children missing education. Parents should always inform us of the reason for any absence, our staff will call all contact numbers associated with the student so we are informed of the students whereabouts by 9.30 am. Where contact is not successfully made, a referral may be made to another appropriate agency (Newham Attendance Management Service (NAMS), Social Care or Police).

Education Links procedure for CME includes welfare visits. Where a child's / child's parent has not had contact with the school for two days the third non contact day will be a visit to the pupils home address.

Our school will inform the local authority of any pupil who fails to attend school regularly or has been absent without school permission for a continuous period of 10 days or more in line with the requirements for Children Missing Education.

4.4 Child Sexual Exploitation (CSE)

Child Sexual Exploitation (CSE) is a form of child abuse, which can happen to boys and girls from any background or community.

"Child Sexual Exploitation is a form of child sexual abuse. It occurs when an individual or group takes advantage of an imbalance of power to coerce, manipulate or deceive a child or young person under the age of 18 into sexual activity (a) in exchange for something the victim needs or wants, and/or (b) for the financial advantage or increased status of the perpetrator or facilitator. The victim may have been sexually exploited even if the sexual activity appears consensual. Child sexual exploitation does not always involve physical contact; it can also occur through the use of technology".

The Department of Education (DfE, 2017)

It is understood that a significant number of children who are victims of CSE go missing from home, care and education at some point. Our school is alert to the signs and indicators of a child becoming at risk of, or subject to, CSE and will take appropriate action to respond to any concerns. The Designated Safeguarding Lead (DSL) will lead on any concerns and work with other agencies as appropriate.

4.5 Criminal Exploitation including County Lines

Criminal exploitation of children is a geographically widespread form of harm that is a typical feature of County Lines criminal activity: drug networks or gangs groom and exploit children and young people to carry drugs, weapons and money for them. Key to identifying potential involvement may be 'missing episodes' when the victim may have been trafficked for the purpose of transporting drugs, weapons or money. Our school will consider a referral using the Newham pathways or a direct referral using the National Referral mechanism for human trafficking.

4.6 Female Genital Mutilation (FGM)

Female Genital Mutilation comprises all procedures involving partial or total removal of the external female genitalia or other injury to female genital organs. It is illegal in the UK and a form of child abuse.

From October 2015, the Serious Crime Act 2015 (Home Office, 2015) placed a duty on teachers to notify the police of any known cases of female genital mutilation where it appears to have been carried out on a girl under the age of 18. Our school will operate in accordance with the statutory requirements relating to FGM in line with the London Child Protection Procedures.

4.7 Forced marriage

A forced marriage is one that is entered into without the full consent of one or both parties. It is where violence, threats or other forms of coercion is used and is a crime. Our staff understand how to report concerns where this may be an issue.

4.8 Prevention of radicalisation

Children can be vulnerable to extremist ideology and extremism. Protecting children from this risk is similar to protecting them from other forms of harm and abuse. The [Counter-Terrorism and Security Act \(HMG, 2015\) Section 26](#) places a duty on schools in the exercise of their functions, to have “due regard to the need to prevent people from being drawn into terrorism”. This duty is known as the PREVENT duty.

It requires schools to:

- o teach a broad and balanced curriculum which promotes spiritual, moral, cultural, mental and physical development of pupils and prepares them for the opportunities, responsibilities and experiences of life and must promote community cohesion;
- o be safe spaces in which children and young people can understand and discuss sensitive topics, including terrorism and the extremist ideas that are part of terrorist ideology, and learn how to challenge these ideas and;
- o be mindful of their existing duties to forbid political indoctrination and secure a balanced presentation of political issues.

CHANNEL is a national programme which focuses on providing support at an early stage to people identified as vulnerable radicalisation and being drawn into terrorism. All staff members understand how to identify those who may benefit from this support and are aware of relevant agencies to contact in circumstances where an individual demonstrates indicators of concern, as well as how to make a referral using the Newham referral pathways.

4.9 Self-Harm and Suicide Risk

Mental health is the concern of the whole community and we recognise that schools play a key part in this. Our school wants to develop and protect the emotional wellbeing and resilience of all pupils and staff, as well as provide specific support for those with additional needs. We understand that there are risk factors which increase someone's vulnerability and protective factors that can promote or strengthen resilience. The more risk factors present in an individual's life, the more protective factors or supportive interventions are required to promote further growth and resilience. It is recognised that young people that may be suffering from mental ill-health and are at risk of self harm or suicide may present in school as making good progress and achieving well. It is therefore vital that we work in partnership with parents and carers to support the well-being of our pupils. It is equally important that parents share any concerns about the well-being of their child with school, so appropriate support and interventions can be identified and implemented.

Where there are concerns that a child or young person may be self-harming, it will be taken seriously as this may indicate an increased risk of suicide either intentionally or by accident. If a child discloses self-harm or found to be self-harming the Designated Safeguarding Lead (DSL) or relevant key person will take the time to establish any underlying concerns.

The child will be supported to access services using the appropriate Newham referral pathways.

5. Procedures

All staff members have a duty to identify and respond to suspected and actual abuse or disclosures of harm. Any member of staff, volunteer or visitor to our school who receives a disclosure or allegation of abuse, or suspects that abuse may have occurred **must** report it immediately to the Designated Safeguarding Lead (DSL) or, in their

absence, the Deputy Designated Safeguarding Lead. Some schools may also have a separate Designated PREVENT Lead, any concerns about a child or young person at risk of radicalisation or extremism will be raised with the PREVENT and Designated Safeguarding Lead (DSL).

All action is taken in accordance with the following guidance;

- o Newham Safeguarding Children Board guidelines - Pan-London Child Protection Procedures
- o Keeping Children Safe in Education (DfE, 2018)
- o Working Together to Safeguard Children (DfE, 2018)
- o PREVENT Duty - Counter-Terrorism and Security Act (HMG, 2015)

Any staff member or visitor to the school will refer concerns to the Designated Safeguarding Lead (DSL) or Deputy Designated Safeguarding Lead. Where there is risk of immediate harm, concerns will be referred by telephone using the Newham Referral Pathways or the Police. Less urgent concerns or requests for support will be referred via the Newham Referral Pathways for consideration of Early Help support as appropriate. Wherever possible, the school will share any safeguarding concerns, or an intention to refer a child to Children's Social Care, with parents or carers. However, we will not do so where it is felt that to do so could place the child at greater risk of harm or impede a criminal investigation. On occasions, it may be necessary to seek advice from the Newham Triage team or the Police in making decisions about when it is appropriate to share information with parents or carers.

If a member of staff continues to have concerns about a child and feels the situation is not being addressed or does not appear to be improving, the staff member concerned should press for reconsideration of the case with the Designated Safeguarding Lead (DSL) who will escalate the concern as appropriate.

If, for any reason, the Designated Safeguarding Lead (DSL) or Deputy Designated Safeguarding Lead is not available, this should not delay appropriate action being taken. Safeguarding contact details are displayed in the school to ensure that all staff members have unfettered access to safeguarding support, should it be required. Any individual may refer using the Newham Referral Pathway where there is suspected or actual risk of harm to a child.

When new staff, volunteers or regular visitors join our school they are informed of the safeguarding arrangements in place, the name of the Designated Safeguarding Lead (DSL) and deputy and how to share concerns with them.

6. Training

The Designated Safeguarding Lead (DSL) and deputy undertake child protection training appropriate to the role at every two years as a minimum. The Principal, all staff members and governors receive appropriate child protection training that is regularly updated. In addition, all staff members receive safeguarding and child protection updates as required, but at least annually, to provide them with relevant skills and knowledge to safeguard children effectively. Records of any child protection training undertaken is kept for all staff and governors.

The school ensures that the Designated Safeguarding Lead (DSL) and deputy also undertake training in inter-agency working and other matters as appropriate.

7. Professional confidentiality

Confidentiality is an issue that needs to be discussed and fully understood by all those working with children, particularly in the context of child protection. A member of staff must never guarantee confidentiality to anyone about a safeguarding concern (including parents / carers or pupils) or promise to keep a secret. In accordance with statutory requirements, where there is a child protection concern, this must be reported to the Designated Safeguarding Lead (DSL) or deputy and may require further referral and subsequent investigation by appropriate authorities.

Information on individual child protection cases may be shared by the Designated Safeguarding Lead (DSL) or deputy with other relevant staff members. This will be on a 'need to know' basis only and where it is in the child's best interests to do so.

8. Records and information sharing

Where there are concerns about the safety of a child, the sharing of information in a timely and effective manner between organisations can reduce the risk of harm. Whilst practitioners must have due regard for the Data Protection Act 2018 and the General Data Protection Regulations (GDPR) it is not a barrier to sharing information. Our school is confident of the processing conditions that allow us to store and share information for safeguarding purposes. This allows us to share information without consent, if it is not possible to gain consent or if to gain consent would place a child at risk.

Well-kept records are essential to good child protection practice. Our school is clear about the need to record any concern held about a child or children within our school, the status of such records and when these records should be shared with other agencies.

Any member of staff receiving a disclosure of abuse or noticing signs or indicators of abuse, will record it as soon as possible, noting what was said or seen, if appropriate, using a body map to record, with the date, time and location. All records will be dated and signed, with the name printed and will include the action taken. This is then presented to the Designated Safeguarding Lead (DSL) or deputy, who will decide on the appropriate action and record it accordingly.

Any records related to child protection are kept in an individual child protection file for that child, separate to the pupil file. All child protection records are stored securely and confidentially and will be retained for 25 years after the pupil's date of birth, or until they transfer to another school or educational setting.

Where a pupil transfers from our school to another school or educational setting including colleges, their child protection records will be forwarded to the new educational setting. These will be marked 'Confidential' and for the attention of the receiving school's Designated Safeguarding Lead (DSL) with a return address on the envelope so it can be returned to us if it goes astray. We will obtain evidence that the paperwork has been received by the new school and then destroy any copies held in our school.

Where a pupil joins our school, we will request all child protection records from the previous educational establishment if none are received.

9. Interagency working

Schools often hold crucial information and as such our school is an essential partner in strategy discussions, child protection conferences and core groups. Our school will be proactive and prioritise inter-agency working to contribute to safeguarding children. It is the responsibility of the Designated Safeguarding Lead (DSL) to ensure that the school is represented at and a report is submitted to any child protection conference or core group meeting for children on the school roll or previously known to them. Where possible and appropriate, any report will be shared in advance with the parent(s) and/or carer(s). Whoever represents the school will be fully briefed on any issues or concerns the school has and will be prepared to contribute to the discussions at the meeting(s).

If a child is subject to a child protection or a child in need plan, the Designated Safeguarding Lead (DSL) will ensure the child is monitored regarding their school attendance, emotional well-being, academic progress, welfare and presentation. The Designated Safeguarding Lead (DSL) will ensure the school prioritises attendance at core group meetings and provide appropriate information to contribute to the plan at these meetings. Any concerns about the child protection plan and/or the child's welfare will be discussed and recorded at the core group meeting, unless to do so would place the child at further risk of significant harm. In this case the Designated Safeguarding Lead (DSL) will inform the child's key worker immediately and then record that they have done so and the actions agreed.

When we become aware that a child or young person who is being, or is going to be, privately fostered our school has a duty under Section 10 of the Children Act 2004 to inform the Local Authority to ensure the appropriate safeguards are in place. The Designated Safeguarding Lead (DSL) will make appropriate referrals using the Newham Referral pathways.

10. Allegations about members of the workforce

The aim of our school is to provide a safe and supportive environment that secures the well-being and best learning outcomes for children. All staff members are made aware of the boundaries of appropriate behaviour and conduct. These matters form part of staff induction and are outlined in the Staff Handbook. We do, however recognise that sometimes allegations of abuse are made and when they occur they are distressing and difficult for all. We also understand that some allegations are genuine and that there are adults who deliberately seek to harm or abuse children. Our school takes all possible steps to safeguard our children and ensure that the adults in our school are safe to work with children.

We will always ensure that the procedures outlined in Chapter 7 of the London Child Protection Procedures are adhered to and will seek appropriate advice from the Local Authority Designated Officer (LADO) by telephone 0203 373803 or email nick.pratt@newham.gov.uk

If an allegation is made or information is received about any member of staff or volunteer who works with children has:

- behaved in a way that has harmed a child, or may have harmed a child;
- Possibly committed a criminal offence against or related to a child or
- behaved towards a child or children in a way that indicates they may pose a risk of harm to children.

The member of staff receiving the information should inform the Principal immediately. This includes concerns relating to agency and supply staff. In addition, staff should also alert the Principal if an individual has behaved in a way in their personal life that raises safeguarding concerns. These concerns do not need to relate directly to a child.

Should an allegation be made against the Principal, this will be reported to the Chair of Governors. In the event the Chair of Governors is not contactable the same day, the information must be passed to the Vice Chair of Governors. The Principal or Chair of Governors will seek advice from the LADO within one working day. No member of staff will undertake further investigations before seeking advice from the LADO.

Any member of staff or volunteer who does not feel confident to raise their concerns within the school should contact the LADO directly. Please refer to section 12 of this policy.

The school has a legal duty to refer to the Disclosure and Barring Service (DBS) anyone who has harmed, or poses a risk of harm, to a child, or if there is reason to believe the member of staff has committed one of a number of listed offences, and who has been removed from working (paid or unpaid) in regulated activity, or would have been removed had they not left. The DBS will consider whether to bar the person from regulated activity. If these circumstances arise in relation to a member of staff at our school, a referral will be made as soon as possible after the resignation or removal of the individual in accordance with advice from the LADO and/or HR.

11. Whistleblowing

Whistleblowing is defined as ‘*making a disclosure in the public interest*’ and occurs when a worker (or member of the wider school community) raises a concern about danger or illegality that affects others, for example pupils in the school or members of the public.

All staff members are made aware of the duty to raise concerns about the attitude or actions of staff in line with the school’s Code of Conduct and Whistleblowing policy.

We want everyone to feel able to report any child protection or safeguarding concerns. More information is available called Advice for Whistleblowing in Maintained Schools (DfE 2014). However, for members of staff who feel unable to raise these concerns internally, they can contact the NSPCC whistleblowing helpline on: 0800 028 0285 or email: help@nspcc.org.uk

Parents or others in the wider school community with concerns can contact the NSPCC general helpline on: 0800 800 5000 (24 hour helpline) or email: help@nspcc.org.uk

Appendix 1 Early Help Offer

http://www.newhamlscb.org.uk/wp-content/uploads/2018/02/04892-Pathways_A4-HIRES.pdf

Appendix 2 - Recording Format

CLAT staff make electronic referrals to the safeguarding team via our MIS and safeguarding software

<https://eduspot.co.uk/> until September 2019 then
<https://cloudmis.bromcom.com/Nucleus/Framework/Login.aspx>

<https://safeguard.software/> (includes body maps)

In the event that these options are not available please use the suggested documents in this section and appendix.

Recording Safeguarding Concerns

Full Name of Child	Date of Birth	Tutor Group/Class

Nature of worry, concern or disclosure	
Please include where you were when the child made a disclosure, what you saw, who else was there and what the child said or did and what you said.	
Time and date of incident:	
Was there an injury? Yes/ No	Did you see it Yes / No
Describe the injury	
Have you filled in the body plan to show where the injury is and its approximate size? Yes /No	
Was anyone else with you? If 'Yes' who?	
Has this happened before? Is 'Yes' did you report the previous incident?	
Who are you passing this information to?	
Name:	
Position:	
Your signature:	
Printed Name:	
Role in School:	
Time form completed:	

Recording Safeguarding Concerns

Time form received by Designated Safeguarding Lead:

Action taken by Designated Safeguarding Lead:

Referred to:

Date:

Time:

Have Parents been informed? Yes / No (If No, state reason)

Feedback given to:

☐

Pastoral team

☐

Early Help
Lead

☐

Child

☐

Person who recorded disclosure

Further Action Agreed:

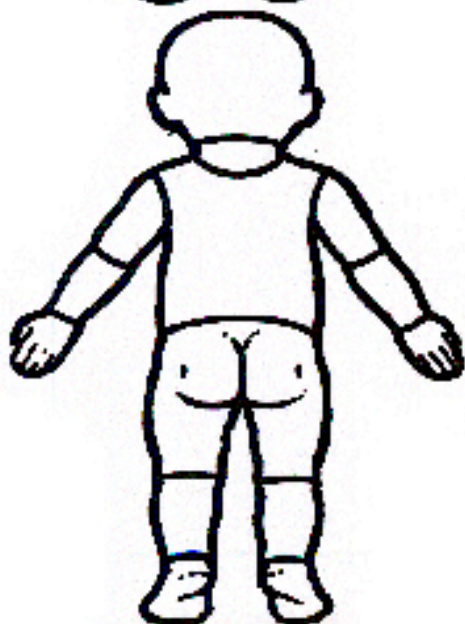
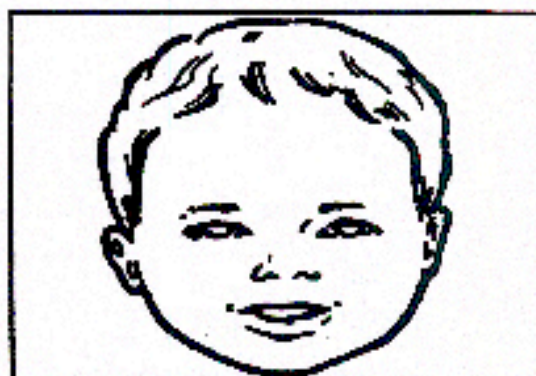
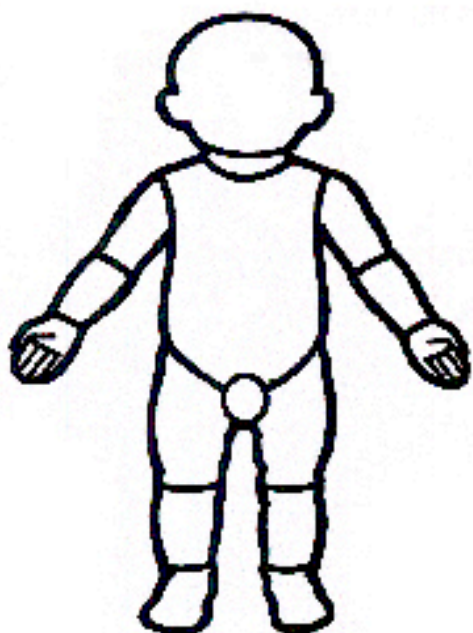
DSL Signature:

Printed Name:

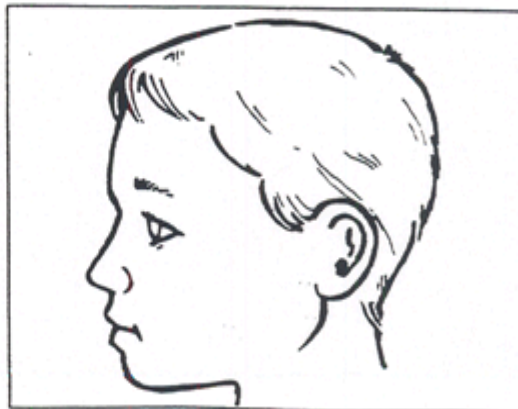
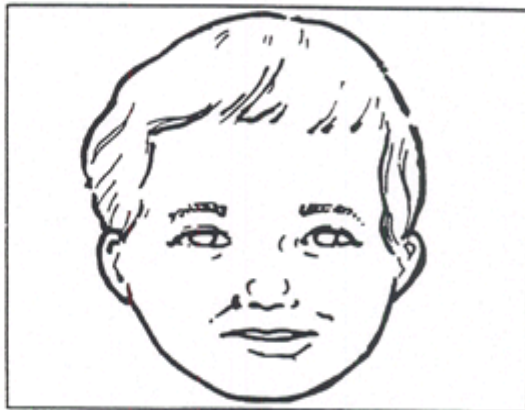
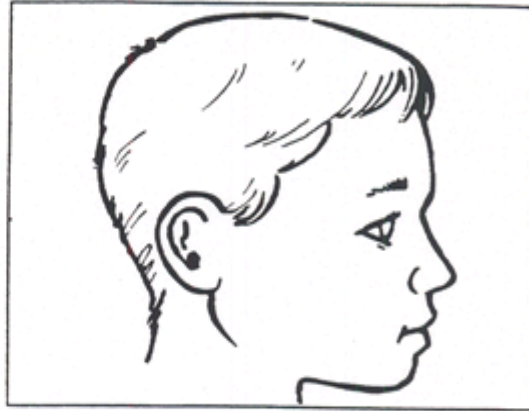
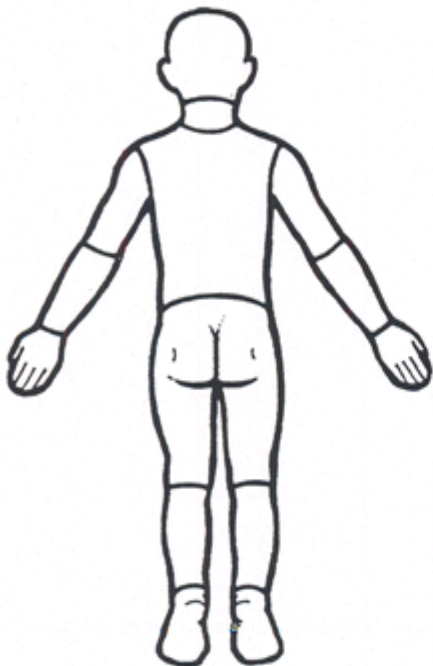
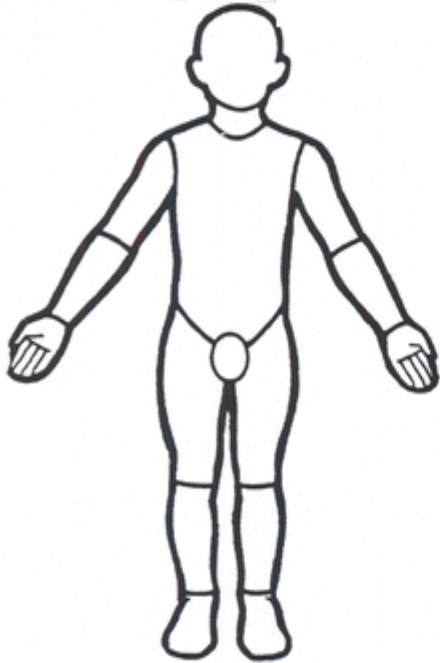
Date

Appendix 3 - Body Plans

Young Child



Older Child



Appendix 4

Document History

Adoption / Review Date	Lead Personnel	Notes	Governor Review
Sept 2015	S. Davies	Adapted from policy existing pre-opening	XXXX
Feb 2016	S. Davies	Adapted from LBN Newham Policy	11 Feb 2016
Jan 2017	S. Davies	Updated to reflect changes in staff team	
June 2019	S. Groenvynck	Revised in line with LBN Model Policy	