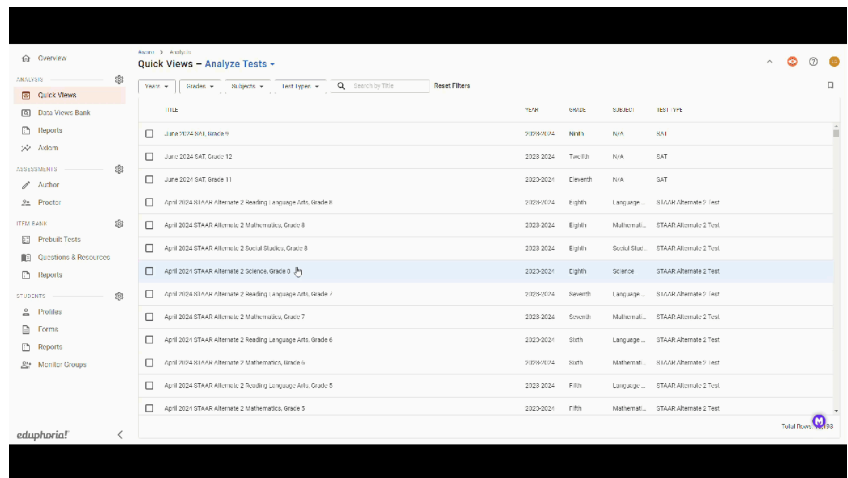


Edit Feature to AWARE Data

Viewing Multiple Tests:

Click on the quick view tab.
Find a test to view the data .
Click the box to select the test.
Click the apply bottom right.



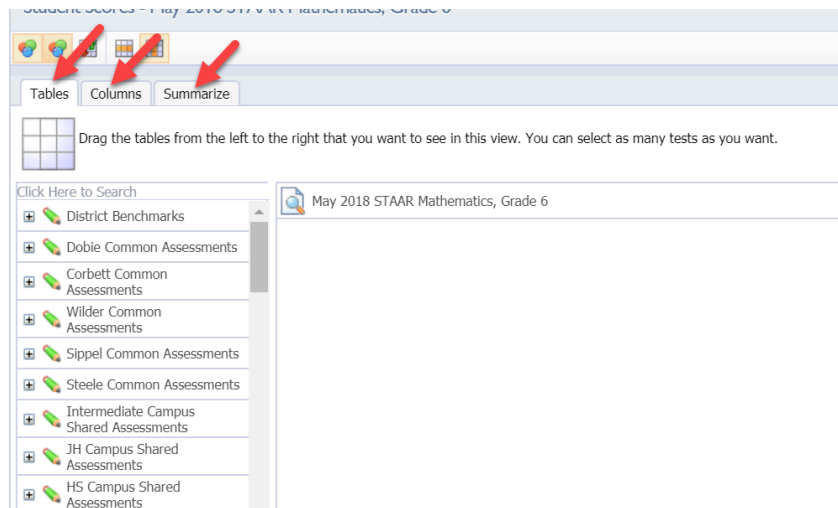
Edit Mode:

You have 3 options to edit:

Tables: Add multiple tests to view at once. To add another test just find the test and drag below the other test.

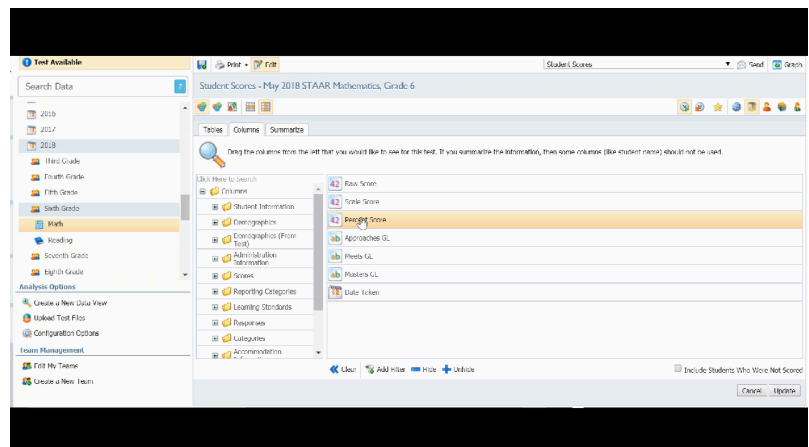
Columns: Actual test information that can be viewed. These can also be filtered.

Summarize: Summarizes data requested in the columns tab. These will appear as rows.



Filtering:

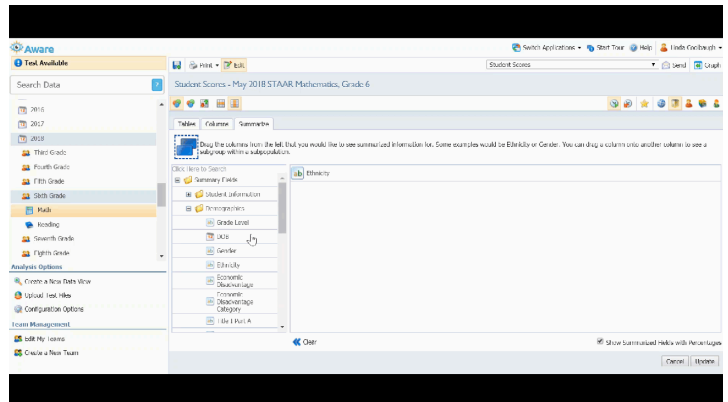
In the columns tab to create a filter, select the information you want filtered. Choose filter at the bottom and select how you want the information filtered.



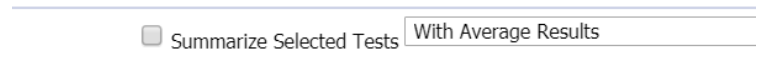
Edit Feature to AWARE Data

Creating Subgroups for Subpops:

You can also create subgroups within a subpopulation. Just drag them under the subpopulation to summarize them.



In the tables tab you also have summarize test option. This allows an average of all tests that you have chosen to be viewed.



When you have the information ready to be viewed, click at the bottom right update.