

## Tab 1



# Carlton County 4-H 2025 Premium Book

**4-H Fair Registration deadline: Wednesday, July 10th, 2025** (paper copy delivered to Extension Office by 4:00 p.m. or postmarked that day) or entered into FairEntry by 11:59 p.m. at <http://carlton-county.fairentry.com>

**Carlton County Fair: Thursday, August 14 to Sunday, August 17, 2025**  
**4-H General Exhibit Judging: Tuesday, August 12, 2025**

**University of Minnesota - Carlton County Extension**  
**317 Chestnut Avenue, PO Box 307, Carlton, MN 55718**

**Office: 218-384-3511**

**Website: [www.extension.umn.edu/carlton](http://www.extension.umn.edu/carlton)**

**Email: [mnext-carlton@umn.edu](mailto:mnext-carlton@umn.edu)**

# Table of Contents

<b>Table of Contents</b>	1-4
<b>State Fair Registration</b>	5
<b>Animal Check-In</b>	5
<b>2025 4-H Fair Schedule</b>	5-6
<b>Registration Information</b>	6-8
4-H Registration	6
Carlton County Fair General Information	7
Fairgrounds Map 2025	8
<b>Exhibit Rules</b>	9-17
Absentee Judging	9
Judging Experiences for Youth with disabilities or injuries	9
Cloverbud Policies	9
Code of Conduct	9
Grievance Policy	9
IAFE Show Ethics	9
Eligibility	9
Registration	9
Project Requirements	10
Exhibits	10-11
Animal Science	11-12
Ribbon Placing Explanation	12-13
Exhibit/Livestock Arrival & Release	14
Insurance	14
Procedure for Entering Club Exhibits	14
Conference Judging Expectations	14
Livestock Health Requirements	15
State Fair and State Events Schedules	15-16
State Fair Eligibility	16-17
Claiming State Fair Trips	17
State 4-H Policies	17
<b>4-H Blue Ribbon Auction</b>	17-18
<b>Science of Animals Educational Exhibits</b>	18-19
<b>Animal Science Exhibits</b>	19-38
Beef	19-20
Dairy	20-22
Dog	22-23
Goat	23-25
Horse and Pony	25-33
Poultry	33-35
Rabbit	35-36
Sheep	36-37
Swine	37-38
Livestock Demonstration	38

<b>Cloverbud Exhibits</b>	39-41
<b>General Cloverbud Exhibits</b>	40
Cloverbud Food Revue	40
Cloverbud Performing Arts	40
Cloverbud Fashion Revue	40
Cloverbud Public Presentation	40
Cloverbud Pet Show	40
Cloverbud Show Your Pet	40
Cloverbud Livestock Exhibits	40-41
Cloverbud Presentation Day Events	41
<b>General Exhibits</b>	41-75
Aerospace	39-40
Agronomy (see plant science section)	42
Bicycle	42
Cats (see Pets section)	42
Child & Family Development	42-43
Citizenship	43-44
Clothing & Textiles	44-45
Constructed Clothing	44
Upcycled Clothing	44
Purchased Clothing	44-45
Sewn Non-Garment	45
Computers (see technology section)	45
Consumer Education & Money Management	45
Crafts & Fine Arts	45-46
Crafts	45-46
Fine Arts	46
Creative Writing	46
Engineering Design	46-47
Engineering Design	46-47
Engineering Design Challenge	47
Exploring Animals	48
Exploring the Environment/Environmental Science (see Natural Resource section)	48
Fashion Revue	48
Fashion Revue Constructed Clothing	48
Fashion Revue Purchased Clothing	48
Fashion Revue Upcycled Clothing	48
Fishing Sports	49
Food & Nutrition	49-51
Foods	49-50
Nutrition	50
Food Preservation	50-51
Food Revue	51
Global Connections	51-52
Health & Wellness	52-53
Home Environment	53
Horticulture	53-55

Flower Gardening	53-54
Indoor Gardening	54
Landscape Design	54-55
Industrial Technology	55
Metal Work	55
Woodworking	55
Mechanical Science	55-56
Natural Resources	56-59
Entomology	56-57
Exploring the Environment/Environmental Science	57-58
Forest Resources	58
Geology	58
Water Resources	59
Needle Arts	59
Performing Arts Exhibit (non-performance)	60
Performance Based	60
Non-performance Based	60
Pets	61
Cats	61
Dogs	61
Show Your Pet	61
Photography	61-64
Elements Of Photography	62-63
Photo Manipulation	63-64
Plant Science	64-66
Agriculture Technology	64
Corn	64
Forages	64
Plant & Soil Science	65
Small Grains	65
Soybeans	65
Specialty Crops	65-66
Weeds & Pests	66
Plastic Sculpture Challenge	66-67
Potatoes (see Vegetable, Fruit, and Herb Gardening)	67
Quilting	67
Safety	67-68
Science Inquiry	68
Self-Determined	68-69
Shooting Sports	69
Technology- Includes Aquatic Robotics, Computer, & Robotics exhibits	69-70
Vegetable, Fruit & Herb Gardening	70-72
Fruit	70
Herb Gardening	71
Potatoes	71
Vegetable Gardening Box	71
Vegetable Plate	71-72

Vegetable Container Garden exhibit	72
Largest Vegetable	72
Veterinary Science	72-73
Video/Filmmaking	73-74
Video/Filmmaking	73
Video/Filmmaking – Production Team (2-3 members per team)	73-74
Wildlife Biology & Management	74-75
Youth Leadership	75-76
Club Exhibits	76-77
Banner	76
Booth	76
Community Pride	76-77
Scrapbook	77
Plastic Sculpture Challenge (see Plastic Sculpture Challenge under General Projects)	77
Public Presentations	77-78
Demonstrations (Individual or team)	77
Presentations & Speeches (Individual or team)	77
Livestock Demonstrations (Individual or team)	77
Interactive Demonstrations (Individual or team)	77-78

# State Fair Registration

## Saturday, August 16th at 9:00 a.m. - 1:00 p.m. - 4-H Building at the Carlton County Fairgrounds

Plan to join 4-H staff to complete your State Fair Registration forms. Youth **MUST** register during this time if they are accepting a State Fair Trip or attending North East Livestock Show. If you are unable to attend during this time you must complete your State Fair Registration prior to **Saturday, August 16th** with Katie or other 4-H staff.

We will be sharing general trip information, changes for this year, answering questions, handing out registration information, and more!

If you are not able to attend due to a conflict, please see Katie at the 4-H Fair Office.

## Animal Check-In

### Wednesday, August 13, 2025

4 to 8 p.m.: GOAT check in  
4 to 8 p.m.: RABBIT check in  
4 to 8 p.m.: SWINE check in  
4 to 8 p.m.: POULTRY check in  
4 to 8 p.m.: BEEF CATTLE check in  
4 to 8 p.m.: SHEEP check in starts

### Thursday, Aug 14, 2025

7:30 a.m. to 1 p.m.: DAIRY CATTLE check in  
8 a.m. to 12 Noon: SHEEP check in ends  
12 Noon to 5:30 p.m.: HORSE check in

**\*\*Animal ID verification will be done by Extension staff and 4-H Superintendents**

## 2025 4-H Fair Schedule

### Thursday, July 10

11:59 p.m.

ALL County Fair registrations forms due in FairEntry OR paper forms due to the Extension office by 4 p.m.

### Monday, August 11

5:00 p.m.

County Fair Clean Up Night - Carlton County Federation

7:00 p.m.

Federation Meeting

### Tuesday, August 12

1:30 p.m. - 2 p.m.

Judges Orientation - 4-H Office

2:15 p.m. - 2:30 p.m.

Judges Assistant check-in - 4-H Office

2:15 p.m.

Exhibit registration begins (Pick up Exhibit cards and wrist bands)

2:30-6 p.m.

**4-H General Exhibit Judging** (including Demonstrations, Performing Arts and Food

Revue)\*\*ENAgFMZ5..

5:30 p.m.

Exhibit Registration closes

6 p.m.

4-H Building closes - Champion and Reserve ribbons placed

### Wednesday, August 13

1 - 6 p.m.

4-H building open for arranging exhibits and pick up wristbands - 4-H Office

4 - 8:00 p.m.

Goat, Rabbit, Swine, Poultry & Beef entry (ALL must be stalled by 8 p.m.)

4 - 8 p.m.

Sheep Entry (continues Thursday 8 a.m. to Noon)

### Thursday, August 14

6 - 11 a.m..

Horse riding - Front Arena

7:30 a.m. - 1 p.m.

Dairy Cattle check in (ALL Dairy Cattle must be stalled by 1 p.m.)

8 a.m.

**4-H Dairy Goat Show** - Swine Barn Show arena; open class to follow

8 a.m. - 12 Noon

Sheep check in (ALL Sheep must be stalled by 12 Noon).

12 Noon - 5:30 p.m.

Horse check in (ALL Horses must be stalled by Noon)

12:30 p.m.

**4-H Beef Show** - Main Arena; open class to follow

3 p.m.

**DEADLINE** for accepting a State Fair trip for General exhibitors

4 p.m.

**4-H Swine Show** - Swine Barn Arena; open class to follow

4:30 p.m.

**4-H Rabbit Show** - Rabbit Barn Arena; open class to follow

5:30 p.m.

Horse Project Exhibitor meeting - Horse Barn

### Friday, August 15

6 - 8 a.m.	Horse riding - <i>Front Arena</i>
8:30 a.m.	<b>4-H Dairy Show</b> - <i>Main arena or Front of Dairy Barn; open class to follow</i>
10:30 a.m.	<b>4-H Meat Goat Show</b> - <i>Swine Barn; open class to follow</i>
12:30 p.m.	<b>4-H Sheep Show</b> - <i>Swine barn; open class to follow</i>
1:30 - 3:30 p.m.	Horse riding - <i>Front Arena</i>
2:30 p.m.	<b>4-H Poultry Show</b> - <i>Poultry Barn; open class to follow</i>
6:30 p.m.	<b>4-H Cloverbud Horse Show</b> - <i>Main Arena</i>
7 p.m.	<b>4-H Drill Team</b> - <i>Front Arena (followed by riding)</i>
7:30 p.m.	<b>DEADLINE</b> for accepting State Fair Livestock Trip

### Saturday, August 16

7 a.m.	Horse riding - <i>Front arena</i>
7:30 a.m.	<b>4-H Horse Show</b> - <i>Horse Arena</i>
9 a.m. - 1 p.m.	<b>MANDATORY</b> State Fair Livestock, General, & Northeast Livestock Show Drop in - <i>4-H Office</i>
1:00 p.m.	<b>DEADLINE</b> for State Fair Livestock, General, & Northeast Livestock Show registration & payment
5 p.m.	<b>MANDATORY</b> State Horse Show meeting (immediately following Horse Show) - <i>4-H Building</i>
6 p.m.	<b>DEADLINE</b> for State Horse Show registrations and payments

### Sunday, August 17

9:30 - 11 a.m.	4-H Round Robin Showmanship Contest - <i>Front Arena</i>
3:30 p.m.	Registration for Blue Ribbon Auction - <i>Swine barn arena</i>
4:30 p.m.	<b>4-H Blue Ribbon Auction</b> - <i>Swine Barn arena</i>
8 p.m.	ALL exhibits released

### Monday, August 18

TBD	Post-fair 4-H Exhibit Building cleanup Rowdy Wranglers
-----	--

## Registration Information

### 4-H Registration

All registrations are due by July 10, 2025.

Fair registration will be done online in the [FairEntry online registration system](#). Any entries not submitted in FairEntry by 11:59 p.m. on July 10, 2025 will have to be submitted to the Extension Office and will not be eligible for a placing higher than a blue or eligible for State Fair. If you do not have access to a computer and internet at home, you can stop by the Extension Office, Monday – Friday, 8 a.m. – 4 p.m., or utilize computers at your local library. If you are unable to make any of this work, please contact the Extension Office (218-384-3511) and we will assist you.

For additional fair-related information, please check out the [4-H at the Carlton County Fair](#) information section of the Carlton County Extension website.

## Carlton County Fair General Information

Contact the Carlton County Fair Manager, Lindsey Larson ([info@carltoncountyfairmn.com](mailto:info@carltoncountyfairmn.com)) with questions

<u>Date</u>	<u>Hours</u>	<u>Admission</u>
Tuesday, Aug. 12	General Exhibit Judging Day	No admission charged
Wednesday, Aug. 13	Animal Entry Day (various times)	No admission charged
Thursday, Aug. 14	11 a.m. until 10 p.m.	
Friday, Aug. 15	8 a.m. until 10 p.m.	
Saturday, Aug. 16	7 a.m. until 10 p.m.	
Sunday, Aug. 17	9 a.m. until 8 p.m.	

All 4-H youth members who bring exhibits to the fair and club leaders get a wristband that provides free admission all four days of the fair. Please plan to pick-up your wristband at the 4-H building registration desk on **Tuesday, August 12th from 2:30 to 6 p.m.** and on **Wednesday, August 13th between 1 and 6 p.m.** If you are unable to pick up your wristband in this timeframe, please contact Katie to make other arrangements. All other family members must pay gate admission. \*\* There are 4-day passes available for \$35 if purchased two weeks before the fair.

## Fairgrounds Map 2025



## 4-H Exhibit Rules

Minnesota 4-H has a series of policies to provide continuity in programming from county to county and address risk management of our events and activities at county and state fairs. These [statewide policies](#) include but are not limited to:

- [Absentee judging of projects](#)
- [Judging experiences for youth with disabilities or injuries](#)
- [Cloverbud Policies and other info regarding age, judging procedures, showing animals, etc...](#)
- [Code of Conduct](#)
- [Grievance Policy](#)
- [IAFE Show Ethics](#)

### Eligibility

1. The 4-H division of the Carlton County Fair is open to all youth currently enrolled in 4-H with the University of Minnesota Extension in Carlton County.
2. All 4-H exhibits must be registered in advance of the fair. Registration materials **MUST BE RETURNED TO THE EXTENSION OFFICE BY JULY 10, 2025**. *Late registrations can still exhibit at the county fair, however, will result in no ribbon placing higher than a blue, no participation in the Blue Ribbon auction, and projects are not eligible for state trips. Any projects added after this date are considered late. Late projects will receive premiums earned.*
3. 4-H members exhibiting must check in with the 4-H Staff or volunteers at the 4-H Building registration desk on Tuesday, August 12th or Wednesday, August 13th to pick up exhibit cards, wristbands and t-shirt.
4. In all livestock shows, only registered 4-H members are allowed to show animals. The only exception would be for Cloverbud exhibitors.

### Registration

1. 4-H county fair registration will be done online at [carlton-county.fair entry.com](#), opening on **Thursday, June 5 2024** and will remain open until **Thursday, July 10, 2024 at 11:59 p.m.**
2. All exhibits must be registered in advance of the fair. **Pre-registration for all exhibits is required by 11:59 p.m. on July 10.** *Late registrations can still exhibit at county fair, however, will result in no ribbon placing higher than a blue, and projects are not eligible for state trips. Late projects will receive premiums earned. Any projects added after this date are considered late.*
3. Youth are allowed to bring **5 exhibits for each class**, unless otherwise noted. Youth are allowed to bring **1 exhibit for each livestock class**.
4. Each 4-H member is strongly encouraged to exhibit a project at the county fair. All youth exhibitors will receive a complimentary 4-day gate pass (wristband and a t-shirt). Wristband will be received at registration on static project judging day or livestock entry day.
5. 4-H members may enter up to:
  - a. **5 general exhibits per class**, unless otherwise stated.
  - b. **1 livestock exhibits per class**, unless otherwise stated.
6. **Cloverbud members** may exhibit **5 general exhibits**, plus **1 livestock exhibit** per species, as well as ***Fashion Revue, Food Revue, Performing Arts, Pet Show, and Public Presentations***. Meeting exhibition requirements of the local county fair board and the 4-H Youth Development Program from 4-H exhibit entry day through release time: If exhibition requirements are not met (and permission is not granted by 4-H and fair), you will not be eligible for all show related premiums, awards, and participation in the state event. Approved early release is an exception to the rule and becomes a 4-H staff and fair board decision based on each situation.

## Project Requirements

4-H members may enter up to:

- a. **5 general exhibits per class**, unless otherwise stated.
- b. **1 livestock exhibits per class**, unless otherwise stated.

**Cloverbud members** may exhibit **5 general exhibits**, plus **1 livestock exhibit** per species, as well as ***Fashion Revue, Food Revue, Performing Arts, Pet Show, and Public Presentations***. Meeting exhibition requirements of the local county fair board and the 4-H Youth Development Program from 4-H exhibit entry day through release time: If exhibition requirements are not met (and permission is not granted by 4-H and fair), you will not be eligible for all show related premiums, awards, and participation in the state event. Approved early release is an exception to the rule and becomes a 4-H staff and fair board decision based on each situation.

## Exhibits

1. Youth will be eligible for all show-related premiums, awards, and participation in the state event when exhibition requirements are met and appropriate permissions are granted by 4-H program staff. Approved early release is an exception to the rule and becomes a 4-H staff, in partnership with the county fair board, decision based on each situation.
2. All youth must be enrolled in 4-H to exhibit, demonstrate, or take part in projects. All work on exhibits entered must be done by the 4-H member and completed during the current 4-H year unless otherwise noted.
3. Note - Cloverbud exhibits, including livestock posters, will not be judged blue, red and white. Instead, all will receive participation recognition.
4. Poster exhibits may not exceed 22" wide x 28" high (unless otherwise noted in a specific project area). They may be smaller.
5. Education/Science Tri-fold Exhibits for all project areas may not exceed 12" deep x 24" wide x 36" high. (Center back 24" wide x 36" high, right and left wings each 12" wide x 36" high.)
6. **All exhibits will be evaluated by a conference with the judge.**  
Exhibit judging criteria:  
Exhibit quality..... 25%  
Educational value ..... 25%  
Knowledge and ability to explain..... 50%

***Decision of the judge is final and may not be appealed.***

7. All exhibits must be labeled with name, club, and county. Other appropriate information for the project (i.e., vegetable varieties) should be included. If the exhibit has multiple pieces, each part needs to be labeled and should indicate 1 of 4, 2 of 4, etc.
8. Oversized exhibits (i.e. large exhibits such as machinery, etc.) Projects exceeding 20 square feet are considered oversized and will need prior approval from the Extension office. **Call the Extension office by July 10**. Oversized exhibits must be in place by 2:00 p.m. on entry day and may be required to be displayed outdoors..
9. Opinions expressed through exhibits and presentations are those of the 4-H member and not necessarily those of MN 4-H, U of MN, or the county fair/agricultural society
10. 4-H members who incorporate AI tools or technologies into their projects should clearly cite the use of these resources. This includes, but is not limited to, AI-generated content, AI-driven data analysis, and AI-based project enhancements. Citation Suggestions: provide the name of the AI tool or technology used; explain how the AI was used in the project; include any relevant references or sources as appropriate.
11. **Copyright Law and infringement:**
  - a. Copyright is a form of protection given to authors and creators of "original work". Original work includes a person's ideas captured in writing or as an image, photograph, song, audio recording, or visual recording.

- b. All original work – including information found on the web – is subject to copyright protection. The author/creator has exclusive rights to reproduce, distribute, display, perform or make derivative works.
- c. Before using another person's work as a part of your 4-H exhibit, be sure that the work is subject to fair use, has a creative commons license or that you have requested and received permission (in writing) to use the original work. If an exhibit infringes on copyright law, a decision may need to be made to remove the exhibit from display at the county or state fair.

#### 12. Community Impact Recognition

- a) Minnesota 4-H wants to recognize youth who are making a difference in their community and are sharing their story through their project(s) and exhibit(s).
- b) Judges at local and state showcases will place a recognition sticker on each exhibit where the 4-H'er clearly articulates how their efforts made a positive community impact.
- c) Exhibits and presentations may demonstrate the youth's community impact efforts through:
  - i) Direct Service: Involves face-to-face interactions with the people, animals, or environment being served - such as distributing meals or cleaning up a park
  - ii) Indirect Service: Involves benefiting a cause or group, but there isn't direct contact with those that benefit - such as fundraising or knitting blankets
  - iii) Advocacy: Involves researching issues of public interest and then encouraging action or promoting awareness - such as promoting mindfulness practices to a school curriculum committee, collecting water quality data for a community organization.
- d) Note: to qualify as "community impact", the project should primarily benefit someone or something more than you individually, or your family
- e) If you are showing an animal/livestock project and would like to participate - you can submit an additional exhibit in the related General Projects category (i.e. Leadership, Citizenship, Self-Determined, Horseless Horse, etc)
  - i) Ex: A 4-H member raises chickens for eggs and supports a local food pantry
  - ii) Ex: A 4-H member trains and certifies their dog for therapy work, and visits local hospitals, nursing homes, or schools to provide comfort and companionship to patients, residents, or students
- f) Recipients will be recognized with a sticker and will be invited to apply for additional leadership awards and recognitions

## Animal Science

1. All beef, dairy, dairy goat, dog, horse, llama-alpaca, meat goat, poultry (doves/pigeons only), rabbit, sheep, and swine shown in 4-H livestock shows must have the required state 4-H ID system, ear tag and/or tattoo. **Animals ID data must be submitted online, arrive in the Extension office, or be postmarked no later than May 15, 2025 (with the exception of market beef due February 18, 2025).**
2. All livestock ear tags will be verified on entry day. Exhibitors for each animal will be declared at verification. Animals without required identification will be sent home immediately. All IDs must be received by the deadline stated for each animal project area. If they are not received by the deadline, the participant can still exhibit at the county fair and receive a premium but will receive no ribbon placing higher than a blue and will not be eligible for state trips.
3. All animals exhibited must be owned solely by the member, member's family or leased by agreement. The family includes the 4-H'er's parents or guardians and siblings living together as a family unit. The definition of family includes an extended family where the animals may be owned by grandparents as long as the 4-H'er's parents are actively involved with and working on the farm. **Animals owned in partnership with non-family members (as defined above) must be leased and follow guidelines within the lease information.**
4. **4-H'ers exhibiting livestock at the county fair are responsible for the care and feeding of animals they exhibit for the entire fair.**
5. **Note - Cloverbud exhibits, including livestock posters, will not be judged blue, red, and white. Instead, all will receive participation recognition.**

6. **All livestock exhibits, excluding showmanship, must be pre-registered.** Members in animal projects may exhibit one animal per class, unless stated otherwise.
7. 4-H'ers must show their own animal in the class. If the 4-H'er has multiple animals in one class, another 4-H member(s) from the same county can show the other animals.
8. All 4-H'ers exhibiting livestock at the county fair are eligible to participate in showmanship **and must show their own animal.**
9. **State Grooming & Fitting Rules:** All grooming of livestock at the fair, including clipping, trimming, and manipulation of the hair/wool (such as blocking on sheep, pulling up hair on beef, and working up top lines on dairy) must be clearly done by the exhibitor, members of the immediate family (parents, step-parents, legal guardians, grandparents, brothers, or sisters), or any other enrolled Minnesota 4-H member.
10. **County Fair Fitting Rule:** All grooming of livestock, including clipping, trimming and manipulation of hair/wool (such as blocking on sheep, pulling up hair on beef and working up top lines on dairy) must be done by the exhibitor, members of the immediate family, or a livestock resource person chosen by the 4-H family. Immediate family members are defined as parents, step-parents, legal guardians, brothers or sisters. A livestock resource person is defined as someone who is working with the 4-H'er/4-H family to help them learn management and fitting and grooming skills in their project area. An identified livestock resource person would be allowed to work with the 4-Her and their family during the fitting and grooming process to guide and teach these skills. The 4-Her exhibiting the animal must be present and involved in the fitting process at the county fair.
11. Registered market animals must have registration papers solely in the exhibitor's name, the exhibitor's family name, or the family's farm name; registered breeding animals must have registration papers solely in exhibitor's name, the exhibitor's family name, or the family's farm name or be under lease from any other owners (including partnerships). Registered breeding animals that are leased may have registration papers in the animal owners name or farm name.
12. To show in the registered breed classes, animals must meet the registration requirements for that breed and registration papers must be available. Animals without proper registration papers (crossbreeds and grades) must be shown as commercial.
13. All animal health regulations will be in effect as stipulated by the Minnesota Board of Animal Health and the Carlton County Agricultural Society.
14. 4-H members may bring only one exhibit per livestock class. The only exception is Cloverbuds, who may exhibit one animal per species and up to five additional static exhibit projects.
15. Feed, halters, and other equipment are to be furnished by the exhibitor and kept free of fairgoer walkways when not in use.
16. 4-H exhibitors are responsible for feeding and caring for their exhibits for the entire fair. Pens and stalls must be kept neat and clean at all times. Exhibits that are not properly cared for or unsightly may be removed, and ribbon placing and premiums forfeited.
17. The Carlton County Agricultural Society (fair board) is not responsible for death, loss or accidental injury to animals.
18. **Only** 4-H horse members can ride in the horse arena during the county fair. All 4-H rules apply. **No riding beyond the south end of the horse barn.**
19. State fair trip animals must be the same one shown at the county show where the state fair trip was won. Only exceptions are poultry, rabbit fryers, and swine. No other substitutions are allowed. Poultry and rabbit fryers shown at the state fair must be from the same flock or herd as those shown at the county fair. Swine for the state fair must be identified by the May 15 deadline and cannot be shown by another 4-H'er at the county fair.
20. No animals may be advertised for sale and no farm, ranch, or sale signs may be displayed or worn in the show ring. The only signs other than 4-H stall cards and champion/reserve champion signs that may be displayed are educationally-based signs with performance or pedigree information and signs with the animal's name.

## Ribbon Placing Explanation

The Danish System recognizes and rewards young people for their efforts and projects. This system is designed to maintain a proper balance of competition and recognition. The Danish System uses colors to signify different award levels. The 4-H project awards ribbons in these colors.



**Purple (Superior)** A purple is awarded to those entries that have met and far exceed the average standards established for that particular class. The exhibit or workmanship is outstanding with minimal flaws.



**Blue (Excellent)** A blue is awarded to those entries that exceed the average standard. The exhibit and workmanship meet the standards of the purple ribbon but has a few flaws.



**Red (Good)** A red is awarded to those entries that meet or are slightly below the average standard established for that class. The exhibit and workmanship meet expectations but has multiple flaws.

**White (Fair)** White is awarded to those entries that do not meet average standard. The level of accomplishment is less than expected. Extremely poor workmanship or little thought is given to the exhibit.

**Green (Cloverbud)** Receive "participation" ribbons

Project Area	Blue	Red	White	Participation
Club Banner	\$25.00	\$20.00	\$15.00	
Club Community Pride	\$25.00	\$20.00	\$15.00	
Cloverbud (animal & general exhibits)				\$3.00
Demonstrations	\$3.00	\$2.00	\$1.00	
General Projects	\$3.00	\$2.00	\$1.00	
Science of Animals Ed Displays	\$3.00	\$2.00	\$1.00	
Beef	\$10.00	\$8.00	\$6.00	
Dairy	\$10.00	\$8.00	\$6.00	
Horse	\$10.00	\$8.00	\$6.00	
Horse Achievement / Training	\$3.00	\$3.00	\$3.00	
Goats	\$8.00	\$6.00	\$4.00	
Sheep	\$8.00	\$6.00	\$4.00	
Swine	\$8.00	\$6.00	\$4.00	
Dog	\$8.00	\$6.00	\$4.00	
Poultry	\$4.00	\$3.00	\$2.00	
Rabbits	\$4.00	\$3.00	\$2.00	

\* Premiums paid for Top 6 ribbon placings in the horse show, plus Horse Advancement/Achievement Records

## Exhibit/Livestock Arrival & Release

### Livestock Exhibits

1. All livestock Exhibits must be in place by the following times:
  - a. Wednesday, August 13, 4 p.m. – 8 p.m. – ALL Goats, Rabbits, Poultry, Swine & Beef Cattle must be in place
  - b. Wednesday, August 13, 4 p.m. – 8 p.m. – Sheep Check in begins
  - c. Thursday, August 14, 8 a.m. – 12 Noon. – ALL Sheep must be in place
  - d. Thursday, August 14, 7:30 a.m. – 1 p.m.. – ALL Dairy Cattle must be in place
  - e. Thursday, August 14, 12 Noon– 5:30 p.m. – ALL Horses must be in place
2. Trucks and Trailers will enter and exit from the north gate on Fair Street.
3. All livestock will be released on **Sunday, August 17 at 8 p.m.**

### General Exhibits

1. All general exhibits must be in place by 6:00 p.m. on Tuesday, August 12, 2025. The exhibit building will close to 4-H families at 6 p.m. and will not re-open until 1:00 p.m. on Wednesday, August 13, 2025 . This is done to accommodate our judges.
2. No exhibits may be removed from the fair prior to designated release times on **Sunday, August 17th, 2025 at 8:00 pm.** This includes all general exhibits and animals.

***These are decisions made by the Fair Board, which need to be respected. Those not complying with this rule will forfeit premium and state fair trip awards.***

## Insurance

All registered 4-H members are covered under group insurance through American Income Life while participating at a 4-H event. Any claims must be written and submitted to the county Extension office within 20 days of the incident. Contact the Extension office with questions regarding coverage and claims.

The fair board & 4-H will not be responsible for any loss or damage to personal property that may occur.

## Procedure for Entering Club Exhibits

1. All clubs will automatically be registered for all eligible club exhibits and may choose which project to exhibit.
2. Projects will be judged during General Project Judging on Tuesday, August 12th of the county fair from 2:30 to 6 p.m.
  - a. Banners must be brought to the 4-H building and ready for judging by 6:00 p.m.
  - b. Scrapbooks and community pride must be brought to the general project judging area and ready for judging/judged between 2:30 to 6 p.m..
3. Each club is required to have youth representatives from your club present for conference judging for community pride and club scrapbook projects.

## Conference Judging Expectations

Judges' placings always stand. 4-H members and parents are not allowed to confront a judge regarding a class placing. 4-H members may ask questions of the judge in a calm, respectful manner. Parents may observe the conference judging at a distance. Any questions asked by the judge must be answered by the 4-H member. Please reference the 4-H Code of Conduct for more specific information for 4-H expectations at <http://z.umn.edu/4hconduct>.

## Livestock Health Requirements

Minnesota Board of Animal Health (MBAH) Phone: 651-296-2942 – Fax: 651-296-7417

**General requirements** – All animals must be examined by the official veterinarian on the day they are admitted to the exhibition and at least once daily during the exhibition. All out-of-state animals must meet Minnesota importation requirements. No animal may enter or be at a public exhibition that is showing clinical signs of any infectious, contagious or communicable disease, including ringworm and warts.

Always check with exhibition management for additional requirements.

The Minnesota Board of Animal Health reminds exhibitors of livestock that animals entering all classes of exhibition need to be officially identified.

The Board of Animal Health rules require official identification of all exhibition animals, except for swine entering slaughter classes and water fowl. Exhibitors are responsible for officially identifying their animals before bringing them to the fair. Additionally, anyone placing an official ID in livestock must keep records. These rules provide better protection of animals and people at the fair by enabling the MBAH to more quickly locate potentially affected animals during a disease event.

Birds and poultry entering the exhibition must be identified with a wing or leg band.

**Cattle** – Cattle must be officially identified.

**Sheep and goats** – Sheep and goats must have an official Scrapie ID and have a tag or registered tattoo along with a breed registry number. No sheep or goat that is within 30 days of giving birth may be exhibited without prior approval from the board.

**Poultry** – Chickens, turkeys, and game birds, except baby poultry, must be individually identified with a leg or wing band. Chickens, turkeys, game birds, and hatching eggs from these birds must be accompanied by a certificate or test chart to show that they originated from a hatchery or breeding flock that is classified pullorum-typhoid clean or negative to a pullorum-typhoid test within 90 days prior to the opening date of exhibition. Turkeys and turkey hatching eggs must be accompanied by a certificate or test chart to show that they originate from a hatchery or breeding flock that is classified Mycoplasma gallisepticum clean and Mycoplasma synoviae clean or are negative to a Mycoplasma gallisepticum and a Mycoplasma synoviae test within 90 days prior to the opening date of the exhibition. Pigeons and Doves must be identified by a seamless leg band.

**Swine** – Breeding and market swine must be officially identified.

**Horses** – Horses, except suckling foals accompanying a negative dam, must be negative to an official equine infectious anemia (Coggins) test conducted within 12 months prior to the opening date of an exhibition.

**Dogs** – Dogs four months of age or older must be accompanied by a certificate of rabies and DHLPP vaccination documenting that the dog is currently vaccinated for rabies.

## State Fair and State Events Schedules - [4-H at the Minnesota State Fair](#)

Carlton County 4-H will participate in **Group 2 Livestock Encampment** from **Wednesday, August 20 to Sunday, August 24, 2025**. The **State Fair General Encampment** is scheduled for **Thursday, August 28, 2025 to Saturday, August 30, 2025**.

The **State Shooting Sport Invitational** will be held in Alexandria, MN on **September 5 to 7th, 2025**.

The **State Horse Show** will be broken into two different shows this year: **September 5th to 9th, 2025** will be at Simmons Arena in Cannon Falls and include the following exhibits: all games, pleasure, equitation, horsemanship, trail, training, etc.

**September 13 to 14th, 2025** will be at Stearns County Fairgrounds in Sauk Centre and include the following exhibits: hippology, horse judging, speech and demo, miniature horse, and drill team.

The **Northeast Livestock Show (NELS)** will be held at the Morrison County Fairgrounds on **September 27 & 28th, 2025**.

The **State Dog Show** will be held at the MN State Fairgrounds on **September 20 - 21, 2025**.

Scholarships are available for youth participating in state competitive events. The amount of the scholarship will be based upon available funding. Youth may only receive one scholarship to a competitive event per year.

Travel arrangements for all State events is the responsibility of the 4-Her and their family. 4-Hers winning State Fair trips: we will try to organize ride sharing for both encampments at the registration/orientation meetings.

Adult chaperones are needed to accompany 4-H youth to State Fair Events and must be a screened 4-H volunteers. All expenses for chaperones (registration, lodging at 4-H dorms, and meals at 4-H facilities) are paid for by the 4-H Federation. There must be at least one adult chaperone for every 10 youth.

**Any general state fair trip winner needs to declare by 3:00 p.m. Thursday, August 14th and livestock state fair trip winner by 7:30 p.m. on Friday August 15 and will be required to attend the mandatory State Livestock Registration. This is a strict deadline. Those who do not declare by 7:30 p.m. will be scratched and the next person in the line-up will be awarded the trip.** If a 4-Her wins a trip in more than one project area they must pick one and sign up at the 4-H building by the deadline.

Registration packets for State trips (Livestock, General, and Horse) are available at the information desk in the 4-H building. Registration for General and Livestock encampments must be complete by 3:00 p.m. on Saturday; Horse show registration must be completed by 8:00 p.m.

Registration/orientation meetings for state events are required for all participants. All 4-Hers must have a parent/guardian in attendance. All meetings will take place in the 4-H building as follows:

- **State Fair General Encampment and Livestock Registration - 9 a.m. to 1 p.m. on Saturday, August 16**
  - Youth or parents must come during this registration time to complete State Fair Paperwork.
  - If you are unable to attend you must pick up your State Fair Registration Prior to Saturday August 17th.
- **State Horse Show Meeting at 5 p.m. on Saturday, August 16.**

4-Hers with State Fair Livestock exhibits are responsible for feeding and caring for their animals for the entire encampment.

Exhibits going on to the State Fair are to be left at the County Fairgrounds. 4-H program staff will transport exhibits to and from the State Fairgrounds. Exhibits will need to be labeled with 4-Hers name, county and phone number. Exhibits can be picked up at the Extension Office after September 8.

State Fair exhibits too large to fit in the trunk of a car have to be transported to and from the State Fairgrounds in St. Paul by the 4-H member's family.

Check out all of the latest information, forms and schedules on the Carlton County website under [Carlton County 4-H at the State Fair](#).

## State Fair Eligibility

1. Trips for state fair, state horse show, and state dog show will be selected from the state fair line-up which includes blue ribbon exhibits only as designated by the official project judge. (See the state dog show rules for exceptions). **Exhibit classes eligible for the state fair are marked with an asterisk \*.**
2. Members selected to represent the county at the state fair and state horse show must have completed sixth grade. Members selected to represent the county at the state dog show need only have completed 3rd grade.
3. To be eligible for a livestock trip to the state fair, 4-Hers must have completed Livestock Quality Assurance & Ethics (LQA&E) Training

**State LQA&E policy:** All youth participating as a state fair 4-H livestock exhibitor in beef, dairy, sheep, swine, poultry, rabbits, meat goat, dairy goat, and llama-alpaca must have completed a livestock quality assurance training. There are two training options

1) a 3 hour in-person workshop (LQA&E), or

2) a 1 hour on-line training (YQCA). Youth completing either quality assurance training option will receive a certificate of completion.

**4. Exhibitor must complete LQA training by August 8th**

5. Along with their qualifying state fair exhibit trip(s), 4-H members may participate in additional state fair activities such as Share-the-Fun, demonstrations, Arts-In, cooking events, animal science educational exhibits, or judging teams.
6. **Competitive events, deadlines, consequences, and exemption options:** Every Minnesota 4-H member is eligible for a "one-time" member exemption. This exemption provides the ability (one-time in a 4-H member's career) for the 4-H member to acknowledge they missed a 4-H deadline related to enrollment or competitive event participation and waive the consequences for the named deadline. **Exemptions may be used for county fair pre-entry registration requirements, but may not be used for State Fair trip sign-up deadlines.**
7. 4-H youth who have been awarded a 4-H state fair livestock trip through the local 4-H qualifying show must keep their designated trip animal on the county fairgrounds until the official release time to remain eligible for the 4-H State Fair trip. In the event that a youth/family requests an early release to travel/attend a national junior livestock show and education event, prior arrangements for early release must be made with and approved by the local 4-H staff, in partnership with the county fair board. Proof of national junior show participation (program with youth's name, printed class placing information) must be presented to local 4-H staff upon return to the county to maintain eligibility for the Minnesota State Fair 4-H livestock shows.
8. 4-H youth that have been awarded a 4-H state fair general project trip through the local 4-H qualifying show must keep their designated trip project on the county fairgrounds until the official release time to remain eligible for the 4-H state fair trip

## Claiming State Fair Trips

All youth that wish to claim a trip to the Minnesota State Fair, must follow the below policy:

- All 4-H members who received a State Fair Trip will be listed on the state fair line-up for that project area/species, posted in the 4-H fair office. Each project area will have a pre-assigned quota from Minnesota 4-H of how many trips in each project area/species that can go to the Minnesota State Fair for each county. Youth younger than 6th grade are not eligible to earn a State Fair trip and will be indicated with a pink highlighter. This recognizes the youth and their achievements.
- Participants wishing to claim a trip that are within the quota limit, **MUST highlight their name in green** on the state fair line-up in the 4-H fair office AND notify 4-H staff or volunteers working the 4-H desk that they are claiming the trip. **This MUST be completed no later than Friday, August 15th at 7:30 p.m. for general and livestock trips.**
- If a participant is not within the quota limit but would be interested in a state fair trip, if given the opportunity following the deadline or by eliminating other names higher on the list due to lack of interest or claiming of a trip in another project area, they **MUST highlight their name in yellow** on the state fair line-up in the 4-H fair office. **This MUST be completed no later than Friday, August 15th at 7:30 p.m..** Please check back following the deadline to see if you will have the option to officially claim the trip.
- If there are still unclaimed state fair trips following the deadline AND no one has indicated their interest in claiming the trip if given the opportunity, anyone still listed on the state fair line-up may claim the available trip(s).
- For unused livestock trips following the deadline that have not been claimed or marked by a 4-H member as being interested in claiming the trip, will follow the above policy on distribution of unused livestock trips.

## State 4-H Policies

The Minnesota 4-H State policies can be found by going to <https://extension.umn.edu/about-4-h/understanding-4-h-policies>.



## 4-H Blue Ribbon Auction

**Sunday, August 17, 2025 - 4:30 p.m.**

*Carlton County Swine Barn Arena*

### Rules & Regulations

*Participation by 4-H members in this Blue Ribbon Auction is strictly voluntary.*

**4-H members in grades 3+ are eligible to participate as long as the following criteria are met.**

### Participant Criteria

Participants must complete all five of the following requirements to be eligible for the Blue Ribbon Auction.

1. Animal ID complete in 4-H online by May 15th deadline
  2. Earn a **BLUE** ribbon in the 4-H Livestock Show.
  3. Participate in the showmanship contest.
  4. [Complete and submit a Blue Ribbon auction bidder contract by Thursday, August 14](#)
  5. Complete a bidder 'Thank You' at the livestock exhibitor meeting on **Saturday, August 16th at 9:30a.m.**
- The auction will be conducted as "premium only". According to University of Minnesota Extension guidelines, a fee of 25% of the premium value will be deducted from each exhibitor to be used for Carlton County 4-H programs.
  - All terms of the sale are check or cash. The Carlton County Fair Board will not be held responsible for errors in the clerking or settlement of sale.
  - It is a privilege to participate in the Blue Ribbon auction. Any violation of the above rules can result in loss of auction premium and/or future participation.

## Science of Animals Educational Exhibits



It is important for 4-H youth showing animals to interact with and educate visitors at the fair so the public will gain a positive image of animal agriculture. To assist with this task, all 4-H youth showing animals are encouraged to have an education display in their barn on the assigned day:

- **Saturday, August 16th from 12 Noon to 2 p.m.** exhibits in beef, dairy, sheep and swine
- **Sunday, August 17th from 12 Noon to 2 p.m.** exhibits in goats, poultry, rabbits and horse

If you show more than one species, just do one exhibit for your favorite species! Your exhibit can include:

1. Personal information about the exhibitor, family farm, and showing experience.
2. The animals are raised for food or fiber (or fun)!
3. The food produced is safe and nutritious.
4. The animals are cared for using best management practices and current technology.
5. Animals may be raised using different approved methods but the result is healthy animals.

Items constructed (such as feeding systems or show equipment) or science exhibits may be enhanced with 3-dimensional displays, posters or notebooks

State Fair trips will be available. Exhibits will be judged during Livestock Encampment and 4-H'ers may exhibit both an animal (if awarded a trip from the county show) and a Science of Animal Educational Exhibit. NOTE: Llama-Alpaca,

Poultry, and Rabbit promotional and educational posters are an exhibit item at the state level and may be entered as a poster in each respective area.

### Health/Breeding/Production

Choose species (Beef, Dairy Cattle, Meat Goat, Dairy Goat, Poultry, Sheep, Swine, Rabbit, Horse)  
Individual or Team

### Zoonotics Exhibits

Choose species (Beef, Dairy Cattle, Meat Goat, Dairy Goat, Poultry, Sheep, Swine, Rabbit, Horse)

### Other/Promotional Poster

Choose species (Beef, Dairy Cattle, Meat Goat, Dairy Goat, Poultry, Sheep, Swine, Rabbit, Horse)  
Individual or Team

## Animal Science Exhibits



### Beef

**Barn Superintendent:** Jessica Ketchum

The 4-H Beef Show will be held at **12:30 p.m. on Thursday, August 14** followed by Open Class. Beef must be stalled by 8 p.m. on Wednesday, August 13

**All grooming of livestock, including clipping, trimming and blocking (all species) must be clearly done by the 4-H exhibitor, members of the immediate family or any other enrolled 4-H member (see pg. 11).**

### Beef Showmanship

**Grades 9+ (Senior Beef Showmanship)**

**Grades 6-8 (Intermediate Beef Showmanship)**

**Grades 3-5 (Junior Beef Showmanship)**

### Cloverbud Beef

**Cloverbud Showmanship** Grades K - 2 (A responsible person must be in control of the animal at all times)

**Cloverbud Beef Poster** - Posters are due at the 4-H office by 6 p.m. on Tuesday, Aug 12, 2025 (General Judging day)

**Birth Dates:**

Breeding Heifer - Spring Calf	January 1 - May 15, 2025
Breeding Heifer - Fall Calf	September 1 - December 31, 2024
Breeding Heifer - Summer Yearling	May 1 - August 31, 2024
Breeding Heifer - Junior Yearling	January 1 - April 30, 2024
Breeding Heifer - Senior Yearling	September 1-December 31, 2023
Cow/Calf	Calves must be born between January 1- May 15, 2025
Prospect Market Calves	January 1 – May 15, 2025
Market Beef	January 1 to August 31, 2024
Dairy Steer	January 1 to August 31, 2024

## Breeding Heifer

Pick Commercial or Registered  
Spring Calf  
Summer Yearling  
Senior Yearling

Fall Calf  
Junior Yearling  
2 year old

### Requirements

Beef heifer ownership ID forms and/or lease agreements must be on file in the Extension office by the May 15 animal ID deadline of the current year.

## Cow & Calf

Combined Commercial & Registered  
Cow and Calf pair

Animals that were identified as a 2024 4-H Beef Heifer project (with a 4-H ear tag and recorded on a 4-H ID) can be identified for a 2025 4-H cow/calf project using the same ear tag. Calves in commercial cow/calf pairs must be tagged by county fair. All cow/calf pairs must be broke to halter. Both cow and calf must be exhibited in the show ring.

## Prospect Calf

Combined Commercial & Registered  
Heifer Calf

Steer Calf

## Market Beef

Market Steer

Market Heifer

### Requirements

Recommended minimum weight for the state fair is 1,000 pounds; recommended maximum weight is 1,500 pounds. Feeder calf exhibits must have a 4-H ear tag. All feeder calves must be broke to halter.

## Dairy Steer

Purebred Dairy Steer  
Prospect Dairy Steer

Crossbred Dairy Steer

### Requirements

- Must be weighed, identified and ear tagged by February 18th to be State Fair eligible.
- Minimum weight for the state fair is 1,000 pounds; recommended maximum weight is 1,600 pounds.
- Purebred dairy steers must be 100% dairy breed. The following breeds will be accepted without registration papers: Ayrshire, Brown Swiss, Guernsey, Holstein, and Jersey. Milking Shorthorn dairy steers must be registered with the American Milking Shorthorn Society and not carry the "S" suffix.
- Dairy steers showing permanent teeth may be shown, but they can place no higher than a red ribbon and they will not be eligible for the state fair.
- **Crossbred dairy steers must be at least 50% from the acceptable breeds listed for the purebred dairy steer division, with the balance being from any other beef or dairy breed; however, the steers must show adequate dairy steer characteristics, as determined by the screening committee. Exhibitors should be prepared to identify the breeds of their crossbred dairy steer.**



## Dairy

**Barn Superintendent:** Samantha Laveau

The 4-H Dairy Show will be held at **8 a.m. on Friday, August. 15** followed by Open Class. Dairy animals must be stalled by 1 p.m. on Thursday, August 14.

**All grooming of livestock, including clipping, trimming and blocking (all species) must be clearly done by the 4-H exhibitor, members of the immediate family or any other enrolled 4-H member (see pg. 11).**

### Dairy Showmanship

All dairy exhibitors are encouraged to register for Showmanship. Clothing traditions are white tops, white pants, no tennis shoes.

**Grades 9 and over (Senior Showmanship)**

**Grades 6-8 (Intermediate Showmanship)**

**Grades 3-5 (Junior Showmanship)**

### Cloverbuds

**Cloverbud Dairy Showmanship** (K - Grade 2) - a responsible person must be in control of the animal at all times)

**Cloverbud Dairy Poster** - *Posters are due at the 4-H office by 6 p.m. on Tuesday, Aug 12, 2025 (General Judging day)*

#### Birth Dates:

Spring (Junior) Calf	March 1, 2025 to May 31, 2025
Winter Calf	December 1, 2024 to February 28, 2025
Fall Calf	September 1 to November 30, 2024
Summer Junior Yearling	June 1 to August 31, 2024
Spring Junior Yearling	March 1 to May 31, 2024
Winter Senior Yearling	December 1, 2023 to February 29, 2024
Fall Senior Yearling	September 1 to November 30, 2023
Milking Yearling	Born September 1, 2023 or later that has freshened & in milking form
Junior 2 Year Old	March 1 to August 31, 2023
Senior 2 Year Old	September 1, 2022 to February 28, 2023
Three Year Old cows	September 1, 2021 to August 31, 2022
Four Year Old cows	September 1, 2020 to August 31, 2021
Cow, Five Years & Older	Born before September 1, 2020
Dry Cow	Dry cow of any age

**Holstein Registered & Grade**  
**Jersey Registered & Grade**

## Mixed Color Registered & Grade

Dairy - Spring (Junior) Calf  
Dairy - Winter Calf  
Dairy - Fall Calf  
Dairy - Summer Jr. Yearling  
Dairy - Spring Jr. Yearling  
Dairy - Winter Sr. Yearling  
Dairy - Fall Sr. Yearling

Milking Yearling  
Dairy - Jr. Two-Year-Old Cow  
Dairy - Sr. Two-Year-Old Cow  
Dairy - Three-Year-Old Cow  
Dairy - Four-Year-Old Cow  
Dairy - Five-Year-Old and Older Cow  
Dairy - Dry Cow

### Requirements

- Senior Yearlings that have calved must compete in the two-year-old cow class.
- Advanced classes must show a complete butterfat record for 305 day

## Dairy Interviews

### Dairy Herd

Group of 3 shown and owned by 1 member (each breed shown separately)

### Dairy Performance

This class is limited to 4-Hers showing animals less than 3 years old that have not completed a 305 day lactation record. The animal must be sired by a bull with a published sire summary or by a young A.I. bull with a pedigree index available on the sire summary tape. The dam must be identified by register or ear tag number, herd code computer number, and farm name. The PTA protein \$'s of the sire plus the PTA protein \$'s of the dam divided by two will be used to determine ribbon placings.

Present records for 305 days to judge at the Dairy Show.

### Dairy Production

Any animal that has completed a 305 day lactation record. The ribbon award will be based on the value of product of the last completed lactation 305 day M.E. Only official DHIA test records are eligible for first or second place recognition. DHIA clip books are awarded to participants with DHIA records.

Present records for 305 to judge at the Dairy Show.



## Dog

Carlton County 4-H Dog Show will not be held this year. Reach out to Katie if your child would like to participate in the Pine County Dog Project this year.

### Requirements

- 4-Hers – 3<sup>rd</sup> grade and up are eligible for county and state dog show.
- 4-Hers shall exhibit in the classes corresponding to the level of training they and their dog have received. Additional information, class requirements, and rules/regulations can be found in the

Minnesota 4-H agility, obedience, rally, and showmanship rules and guidelines (four separate publications) available on the MN 4-H dog project website [extension.umn.edu/projects-and-more/4-h-dog-project](https://extension.umn.edu/projects-and-more/4-h-dog-project)

- All dogs must be vaccinated according to the requirements listed on the MN 4-H Dog Project ID Affidavit and Vaccination Form.
- In order to be state agility show eligible, members must have attended at least six county or private trainings.
- In order to begin taking 4-H agility classes, a dog/handler team must have achieved a minimum obedience score of 170 or higher at a county or state 4-H dog show OR lost fewer than 30 points in a sub-novice class at a kennel club show OR must have completed 2 years of obedience training before beginning 4-H agility instruction. A verifiable dog show/match score may be substituted for a county or state show score provided

that score was earned by the same dog/handler team. This is to ensure that a working relationship has been established between this handler and dog.

- All dog participants need to provide a photo, along with a brief summary of what you participated in for the dog this year. These will be hung in the 4-H Exhibit Building, instead of doing a public demonstration during the fair.

## Dog Obedience

Dog - Obedience Foundation Class  
Dog - Obedience Beginner  
Dog - Obedience Graduate Beginner  
Dog - Obedience Novice  
Dog - Obedience Graduate Novice  
Dog - Obedience Pre-Open  
Dog - Obedience Open  
Dog - Obedience Graduate Open

Dog - Obedience Pre-Utility  
Dog - Obedience Utility  
Dog - Obedience Veterans  
Dog - Obedience Brace  
Dog - Obedience 4 Dog Team

## Dog Rally

Dog - Rally Foundation  
Dog - Rally Beginner  
Dog - Rally Novice  
Dog - Rally Graduate Novice  
Dog - Rally Intermediate  
Dog - Rally Veterans

Dog - Rally Advanced  
Dog - Rally Pre-Excellent  
Dog - Rally Excellent  
Dog - Rally Pre-Master  
Dog - Rally Master

## Dog Showmanship

Dog - Showmanship Novice  
Dog - Showmanship Open  
Dog - Showmanship Excellent

## Dog Agility

Dog - Pre-Jumpers (County Only)  
Dog - Limited Agility  
Dog - Pre-agility  
Dog - Agility Beginner  
Dog - Agility Elementary  
Dog - Agility Intermediate

Dog - Agility Senior  
Dog - Agility Advanced  
Dog - Jumpers 1A  
Dog - Jumpers 1B  
Dog - Jumpers 2  
Dog - Jumpers 3

### Requirements

- A dog may be shown in the dog show or the pet show, not both!
- 4-H'ers - 3rd grade and up are eligible for county and state dog show.

4-H'ers shall exhibit in the classes corresponding to the level of training they and their dog have received. Additional information, class requirements, and rules/regulations can be found in the Minnesota 4-H Agility, Obedience, Rally and Showmanship rules and guidelines (four separate publications) available on the [MN 4-H dog project website](http://z.umn.edu/mn4hdogproject) (z.umn.edu/mn4hdogproject).

## Goat



### Barn Superintendent: Melanie Nelson

The 4-H Dairy Goat show will be held at **8 a.m. on Thursday, August 14th** followed by open class. All dairy goats must be entered and stalled by 8 p.m. on Wednesday, August 13th.

For safety reasons, all goats must be disbudded/dehorned; regrowth of less than one inch is allowed. Goats must be fitted and trimmed for the show. All grooming of livestock, including clipping, trimming and blocking (all species) must be clearly done by the 4-H exhibitor, members of the immediate family or any other enrolled 4-H member (see pg. 11). All goats must have an approved scrapie program ID (including Cloverbud goats).

## Dairy Goat Showmanship

Grades 9+ (Senior Showmanship)

Grades 6-8 (Intermediate Showmanship)

Grades 3-5 (Junior Showmanship)

## Cloverbud Dairy Goat

**Cloverbud Dairy Goat** (K - Grade 2, a responsible person must be in control of the animal at all times)

**Cloverbud Dairy Goat Poster** - Posters are due at the 4-H office by 6 p.m. on Tuesday, Aug 12, 2025 (General Judging day)

### Birth Dates:

Junior Doe Kid	April 1 – June 30, 2025
Senior Doe Kid	January 1 – March 31, 2025
Dry Yearling Doe (never kidded)	January 1 – December 31, 2024
Milking Yearling Doe	January 1 – December 31, 2024
Milking Two-Year Old Doe	January 1 – December 31, 2023
Milking ~ 3 Years and under 5 years	Born in 2021 or 2022
Milking ~ 5 Years and Older	Born before 2021

## Dairy Goat

Non-breeding

Combined

Registered

Recorded Grade

Unrecorded Grade

Junior Doe Kid\*

Senior Doe Kid\*

Dry Yearling Doe\*

Milking Yearling Doe\*

Milking Doe - Two Year Old\*

Milking Doe - Three - Four Years Old\*

Milking Doe - Five Years and Older

NOTE: Pygmy goats (all breeds) are classed as meat goats

For safety reasons all dairy goats must be dehorned/dis-budded. Regrowth of less than ONE INCH allowed.

## Meat Goat

The 4-H Meat Goat show will be held at **10:30 a.m. on Friday, August 15th** followed by open class. All dairy goats must be entered and stalled by 8 p.m. on Wednesday, August 13th. For safety reasons, all goats must be disbudded/dehorned; regrowth of less than one inch is allowed. Goats must be fitted and trimmed for the show.

All grooming of livestock, including clipping, trimming and blocking (all species) must be clearly done by the 4-H exhibitor, members of the immediate family or any other enrolled 4-H member (see pg. 11). All goats must have an approved scrapie program ID (including Cloverbud goats).

## Meat Goat Showmanship

Grades 9+ (Senior Showmanship)

Grades 6-8 (Intermediate Showmanship)

Grades 3-5 (Junior Showmanship)

## Cloverbud Meat Goat

**Cloverbud Market Goat** - K - Grade 2 (A responsible person must be in control of the animal at all times)

**Cloverbud Meat Goat Poster** - Posters are due at the 4-H office by 6 p.m. on Tuesday, Aug 12, 2025 (General Judging day)

### Birth Dates:

Meat Market Goat (wether or doe)	November 1, 2024 – April 30, 2025
Dairy Market Goat (wether)	November 1, 2024 – April 30, 2025
Wether Dam Yearling (never kidded)	September 1, 2023 - August 31, 2024
Wether Dam Kid	September 1, 2024 - April 30, 2025
Senior Yearling Meat Goat Breeding Doe (registered or grade) (never kidded)	September 1, 2023 – February 29, 2024
Junior Yearling Meat Goat Breeding Doe (registered or grade) (never kidded)	March 1, 2024 – May 31, 2024
Fall Yearling Meat Breeding Doe (never kidded)	June 1, 2024 – November 30, 2024
Senior Meat Breeding Doe Kid	December 1, 2024 – February 28, 2025
Junior Meat Breeding Doe Kid	March 1, 2025 – May 31, 2025

**Note:** Pygmy goats (all breeds) are classed as meat goats

## Market Goat (*males must be neutered*)

Meat Market Goat, wether

Meat Market Goat, doe

Dairy Market Goat, wether

## Wether Dam

Wether Dam Yearling (never kidded)

Wether Dam Kid

## Meat Breeding Doe

Senior Yearling Breeding Doe, registered or grade (never kidded)

Junior Yearling Breeding Doe, registered or grade (never kidded)

Fall Yearling Breeding Doe

Senior Meat Breeding Doe Kid

Junior Meat Breeding Doe Kid

## Requirements

- Market animals must be a minimum of 40 pounds, but not to exceed a maximum of 110 pounds by the State Fair.
- Market wethers must be disbudded/de-horned. Re-growth must not exceed one inch. Cut (sawed) off horns are not permitted
- Meat breeding does and market does may have horns and they do not need to be capped or blunted.



## Horse and Pony

**Barn Superintendent:** Lisa Robinson

### 4-H County & State Qualifying Show

Saturday, August 16

All Training Levels  
(Event held prior to County Fair)

7:00 a.m.

---

Saturday, August 16

Pleasure Classes – Including Cloverbud  
(Event held prior to County Fair)

7:30 a.m.

---

Saturday, August 16

Games – Including Cloverbud  
(Event held prior to County Fair)

Following lunch, not before 11:00  
a.m.

---

## Requirements

The 4-H Horse and Pony Show will be held on Saturday, August 16th in the arena starting at 7:30 a.m. Horse Training Judging will be held on Saturday, August 16th at 7:00 a.m.

**RULES GOVERNING THE CARLTON COUNTY 4-H SHOW ARE FOUND IN THE CURRENT EDITION OF THE MINNESOTA 4-H HORSE PROGRAM RULE BOOK (revised Nov. 2017, with corrections made 4/4/2018) located at:**

<https://extension.umn.edu/projects-and-more/4-h-horse-project>. Carlton County Horse and Pony Guidelines will be updated as needed to reflect State Rule Book changes. When the State Rule Book presents more than one option for procedures, all youth in the Carlton County Horse Project will vote on options using a paper ballot mailed out by the 4-H Program Coordinator.

### Attire:

- Clothing traditions for western classes are boots and hat or helmet in Showmanship, helmet for all other classes, shirt, dress or western pants, and belt. Chaps optional.
- For hunter/English classes riders must wear coats, boots, breeches and ASTM/SEI approved headgear.
- For saddle seats see MN 4-H Horse Program Rule Book.
- For game classes must wear western boots, ASTM/SEI approved headgear properly worn and fastened, western pants or jeans; belt is optional. Dress or western shirt with long sleeves (with sleeves rolled down and fastened) and collar. Chaps optional.

### I. GENERAL INSTRUCTIONS

- A. Walk/trot classes are meant for the Walk/trot rider of any age. Walk/trot will allow riders to compete at the fair without the requirement to lope/canter their horse in a group. This brings the 4-H philosophy back into focus. Riders who can ride at all three gaits are encouraged to compete in their age group for blue, red and white ribbons. If riders exhibit in walk/trot classes they must ride only in walk/trot classes in the morning (including Trail) they can ride in their age group classes for games.
- B. Points earned in Walk/Trot classes are not counted towards the State Horse Show or the Jenny Maki Memorial Award.
- C. Each member is encouraged to present the yearly completed requirement in their achievement book. These can be signed off by an adult leader anytime they are completed with the deadline being the fair barn meeting. The

horse project youth secretary will document each member's completed and signed off requirements in his/her records.

- D. Each member **MUST** exhibit in showmanship or groomsmanship class. If you do not sign up for one of these classes you will be disqualified to show at the fair. **Groomsmanship does not count for high points award.**
- E. Horses exhibited in 4-H classes and contests at the county fair shall be (and have been) owned or leased alone or in partnership by the members and carried in a 4-H project since before May 15 of this year.
- F. Prior to May 15 each member must have on file at the Extension Office his/her 4-H horse identification form. If substitution for any reason occurs on or after May 15, the horse is ineligible for the State Horse Show but can still be shown at the county fair.
- G. Each member may exhibit two horses at the show: one in pleasure and one in games, but only one State Horse Show trip can be taken. **Unless one horse is a training horse, then you are allowed to take two if the training quota has not been met.**
- H. For the safety of participants, only mares and geldings will be allowed at the county fair.
- I. Profanity will not be allowed and may be cause for disqualification from the county fair.
- J. General conduct including behavior, drugs, alcohol and cigarettes will be followed according to the **Minnesota 4-H Code of Conduct (2013, revised 2017).**
- K. Riders are asked to scratch events by Thursday night (in the horse barn) to avoid last minute confusion during the show on Saturday. Members are asked to get their show number Friday night. Any classes added will not receive premiums.
- L. All horses must be tied securely, and 4-H members are responsible for their care.

Ponies are defined as 56 inches and under, mature height. All ponies must be measured by a HPDC member prior to Thursday at 6:00 p.m. to ride in a "pony" class or they will be placed in their age group class.

## **II. PREMIUMS AND RIBBONS**

4-H horse project members will be paid premiums for their top 6 ribbon placings in the horse show. For example: If someone receives 3 blues, 2 reds and 3 whites, they will be paid for 3 blues, 2 reds, and 1 white. If someone received 4 blues, 3 reds, and 1 white, they will be paid for 4 blues and 2 reds. The other classes will be ribbon only - no premiums. No premium paid on key hole, barrel racing, jumping figure eight, or pole weaving or speed dash for a broken pattern.

**SPECIAL AWARDS - Participation points will be required to earn a high point trophy at the county fair.** Awards will be presented following verification of total points by the horse project committee after the judging has been completed. High point pleasure and game awards are for exhibitors who have completed grade 5 and younger (Jr.), completed grades 6-9 (Int.), and completed grade 10 and older (Sr.) The system for the high point awards will be the total of the all around accumulated points on ribbon placings in the show with the same horse and rider combination in the pleasure classes and the game classes. Points are determined as follows: in each class the judge will rate the top 6 blue ribbons; first blue gets 8 points, second blue gets 7 points, third blue gets 6 points, fourth blue gets 5 points, fifth blue gets 4 points, sixth blue gets 3 points. All remaining blues get 2 points and all red ribbons get 1 point. There are no points for white ribbons. The Jenny Maki Memorial Over-all High Points Award is given to the exhibitor accumulating the highest number of all around points with the same horse and rider combination. Walk/Trot classes do not count towards the Jenny Maki Award. A Walk/Trot high point award is given to the high point Walk/Trot in pleasure. First place for each class will receive their award at the time the class results are announced. The system for the high point awards will be the total of the all around accumulated points on ribbon placings in the show with the same horse and rider combination. When a member brings two horses to the county fair they are eligible to earn the high point trophy in both pleasure and games.

## **III. ADVANCEMENT/ACHIEVEMENT RECORD**

- A. It is strongly encouraged that members complete these records and have them signed off by the project leader or committee member.
- B. Members who complete their record (and have it signed) by the barn meeting during the county fair will receive a \$2.00 premium award.
- C. Show the horse project youth secretary your signed achievement book at the barn meeting so it can be documented as completed for the 4-H Office to include in figuring premium checks.

**Take care of your book. Put it in a safe place because you will use this same book in future years.**

#### **IV. HORSE TRAINING**

- A. Advancement/Achievement Record must be completed at the same level as the training step you are completing. Example: If you are showing your training horse at Step 3 you must also have completed Step 3 of your Achievement book.
- B. To show at the fair, members must have a pink training book verified prior to the Training Evaluation at the fair. This must be done by August 1.
- C. Exhibitors should be present at the Horse Barn and prepared to demonstrate skills at time designated for horse training evaluation. **Make sure to bring a verified, pink training book.**
- D. The Horse Training trip(s) and alternates will be selected by the judge after horse training is completed Friday evening.

#### **V. COUNTY FAIR PARTICIPATION**

- A. Stall sign up sheets will come in the county fair packet.
  - 1. A box stall will be assigned at the August meeting with the barn supervisor.
  - 2. Stalls will be assigned **by the barn supervisor.**
- B. Every 4-H member who will be showing at the fair must sign up for working in the barn **with parent supervision.**
- C. Each 4-H horse exhibitor or a representative **MUST ATTEND** the barn meeting at **5:30 p.m. on Thursday, August 14th.** This is a **mandatory meeting**; if the 4-H exhibitor is unable to attend they must have a representative there, e.g. a parent. They need to let an adult or youth 4-H horse project leader know before the meeting that they are unable to attend. At this time house rules, answering questions, clarifying any show changes, etc. will be discussed.
- D. A COPY OF THE COGGINS TEST MUST BE TURNED IN TO THE 4-H LEADER BY THE FIRST HORSE RIDING EVENT OR THE EXTENSION OFFICE BY AUGUST 1 OR YOUR HORSE WILL NOT BE ADMITTED INTO THE BARN. Coggins tests must be current within twelve (12) months of the fair.

#### **VI. GENERAL HORSE RULES**

- A. Members are not to mount up in the barn at any time.
- B. No horses may be ridden from the barn across the pavement to the arena. Horses are to be led to and from arena and then mounted in the arena or the fenced area adjacent to the arena.
- C. Absolutely no horses beyond the livestock barns (unless there is a designated riding area)
- D. Absolutely no horses on the race track.

If the above rules are not abided by, the following consequences will take effect:

**1st offense** – premiums will be withheld

**2nd offense** – will be asked to leave the grounds for the remainder of the fair.

- E. Horses may be ridden in the arena during designated riding times. Spirit Riding Arena is available for practice on Thursday and Friday. You must walk your horse to the Spirit Riding Arena.
- F. Grooming, care, and training of the horse is the 4-H member's responsibility. Parents can be helpful but cannot "do" these chores for a 4-H exhibitor.
- G. Boots and ASTM/SEI approved helmets, properly fastened, must be worn at all times when mounted (including 4-H volunteers).
- H. No bareback riding, no riding without a proper bridle, no riding double.
- I. You may only tie your horse to a secure fence of a stall.

All rules pertaining to practice arena areas will be discussed when you sign in at the fairgrounds.

#### **VII. BARN RULES**

- A. No smoking in the barn.
- B. No bikes allowed in the barn.
- C. No riding in the barn.
- D. The aisle-way must be kept clean and clear.
- E. No horseplay in the barn - running, pushing or water fights.
- F. Manure must be put in designated areas - these will be marked. Be sure to always "scoop up" after your horse.

- G. Stalls must be kept clean. Stalls should be kept in "show condition" at all times. It is up to you to clean your stall. You must check in and out of the barn with the barn manager. If you do not clean your stall you will not be eligible to get a stall next year.
- H. Wash areas must be kept clean and clear.
- I. You must bring your own equipment for cleaning.

#### **VIII. STATE HORSE SHOW TRIPS**

A State Horse Show trip no longer takes the place of a State Fair Trip. A rider may earn both.

Trips are awarded for Performance and Games using the Percentage Based Split method. This is based on the number of **horses showing this year** in our county show in games and pleasure for youth in grades 6-12+.

For example, if we receive 4 state trips and at this year's county show 10 horses showed in pleasure and 22 horses showed in games (total 32 horses) this is how the percentage based split would be calculated: Formula  $10/32 = .31$  or 31% is the number of trips that would go to pleasure. If there were 4 trips awarded to our county,  $.31 \times 4 = 1.25$  trips in pleasure. For games, calculate the percentage by  $22/32 = .69$  or 69%. Multiply that by 4 (the total number of trips) and the answer is 2.75 trips for games. So in this example, after rounding off the numbers, there would be 1 pleasure trip and 3 games trips. There will always be at least 1 pleasure trip if gaming is the higher percentage or 1 game trip if pleasure is the higher percentage.

If the percentage comes out to a .5, it will be rounded up. So if games or pleasure came out to 1.5 we would round up to 2 (based on conversation with Renee Kostick, 4-H Horse Liaison).

#### **Performance Points:**

Performance points will be earned in the following classes: Western Showmanship, Western Pleasure, Western Horsemanship, Hunt Seat Pleasure, Hunt Seat Equitation, English Showmanship, and Trail.

#### **Game Points:**

1. Game points will be earned in Barrels, Poles, Jumping Figure 8 and Key Hole. Speed Dash does not count toward state trips.
2. Trips will be awarded according to the highest total points earned by each rider in grades 6-12. Points are awarded on fastest times of state horse show eligible riders.
3. There will be a five second penalty for the first knockdown in each class. Two or more knockdowns will be a white ribbon.

#### **Performance/Game General Rules:**

1. In each class, the judge will rate the top 6 blue ribbons (1st place gets 6 points, 2nd place gets 5 points, down to 1 point).
2. Game trips are not determined by ribbon placings but by the fastest times of state horse show eligible horse/riders in the intermediate and senior class.
3. A participant in the State Horse Show may only enter the classes she/he received a blue ribbon in at county fair (except Western Trail).
4. In case of a tie, see the Minnesota 4-H Horse Program Rule Book.
5. If there are more State Horse Show eligible riders receiving blue ribbons in Trail then our county's Trail Class quota, the highest placed blue ribbons at county fair will participate in Trail at the State Horse Show.
6. State Horse Show trip recipients must notify 4-H fair chairperson by 4:00 p.m. Sat., Aug. 17 if they are accepting or declining their state trip. There is a mandatory meeting at 5:00 p.m. Saturday, Aug. 17 in the 4-H building to complete State Horse Show paperwork.

#### **IX. HORSE PROJECT HIGH POINT REQUIREMENTS**

In an effort to promote learning and leadership in horse project members, the **Carlton County Horse project requires earning ten participation points to earn a high point trophy**. The points will be documented in the youth horse project secretary's records.

Points will be acquired according to the following:

- ❖ County horse project meeting/activity – 2 points

- ❖ 4-H horse clinic\* – 1 point per day, maximum of 6 points per year
  - ❖ Plan and teach a county-wide horse related clinic/demonstration – 6 points
  - ❖ Plan and teach a horse related clinic/demonstration for your club – 4 points
  - ❖ Help to organize and work at a county wide horse project activity (i.e. a playday) – 6 points
  - ❖ Help at a Federation fundraiser (must have documentation from ext. office or adult leader at fundraiser) – 2 points
  - ❖ Horse related community service, (i.e. North Country Ride) – 1 point/day, maximum 6 points per year
  - ❖ Participation in horse bowl; attend practices or help coach – 1 point each practice; enter competition – 2 points, with a maximum of 6 points per year.
  - ❖ Attend a state wide 4-H horse project clinic or seminar (i.e. Winter Round-up) – 2 points per each day attended.
  - ❖ Volunteer your time for the MN State 4-H Horse Project (i.e. the horse expo, 4-H tack sale, or 4-H booth) – 6 points per day or 1 point per hour.
  - ❖ Attend a horse project committee meeting – 2 points.
  - ❖ Write a horse related essay to share at a horse project meeting that another member can read for you if you are unable to attend. This is available for members who may not be in the county during most of the horse project year, i.e. at college or living with another family member. It needs to be approved by a horse project leader before the meeting – 6 points.
  - ❖ Complete the application process for the state wide Dan Patch award or the 6-9th Grade Bonus Trip – 6 points.
  - ❖ Participate in 4-H Horse Project scheduled Adopt-a-Highway road cleanup – 2 points.
  - ❖ Volunteer at a Fun Show with 4-H leader supervision – 4 points per day
- \*This does not include non-4-H clinics at regional or state expos.

Points must be documented with a signature from one of the following: horse project leader at clinic/demonstration/activity, person responsible for clinic, the volunteer director at the facility where you are volunteering, adult leader at meeting, or official attendance records from Horse Project meetings. Participation point verification will take place at the August horse project meeting. Required participation points must be completed before the barn meeting (points are not given for attending the barn meeting). will take place at the **August** horse project meeting. Required participation points must be completed before the barn meeting (points are not given for attending the barn meeting).

#### **Horseless and Horse-Related Exhibits:**

These horse project exhibits (where the horse is not present) **will be judged during the General Exhibit judging on Tuesday, August 12th**. Exhibits may be a tri-fold display, model, poster, scrapbook, essay or article. These exhibits will be entered under GENERAL exhibits in FairEntry.. General exhibit premiums will be awarded.

### **Horseless Horse Exhibit \***

#### **Horse - Horseless Horse, Grades 3-5**

#### **Horse - Horseless Horse, Grades 6+**

#### **Exhibit Suggestions:**

- An educational exhibit to show or explain something the 4-Her made, did or learned or may explore consumer issues, breeds, careers, etc.
- Winning exhibits can be displayed at the State Horse Show.

#### **Requirements:**

- Exhibits may be a model, poster, scrapbook, essay, and/or article. The exhibit should show or explain something the 4-H member has made, done, or learned in the project.
- Exhibits are conference judged with the exhibitor present
- This exhibit area is for youth who don't own or lease a horse. Youth should exhibit in this category if they participate in the horseless horse program with a mentor horse. If they do own or lease their own horse, they may exhibit the same style exhibit in the Horse Related area.

### **Horseless Horse Skills Class \***

#### **Horse - Horseless Horse Level 1, Grades 3-5**

#### **Horse - Horseless Horse Level 2, Grades 6+**

## Horse - Horseless Horse Level 1, Grades 6+

## Horse - Horseless Horse Level 2, Grades 3-5

## Horse - Horseless Horse Level 3, Grades 3-5

## Horse - Horseless Horse Level 3, Grades 6+

### Requirements:

- Youth will complete a level in the [horseless horse booklet](#) prior to the show. The booklet will include answering knowledge questions and learning hands-on skills. An example of a knowledge question would be to list 4 breeds of horses and describe their uses. An example of a skill to demonstrate would describe and demonstrate how to properly back a horse on the halter 4 steps.
- The booklet must be signed prior to the show by a Horseless Horse Volunteer, Mentor, or 4-H Extension Staff attesting to that the youth has completed the booklet, can complete the skills, and is prepared for the judging experience.
- Youth can only test and exhibit one level per year.
- They will use a mentor's horse in the ring. The horse will be used to aid in answering the judges questions and demonstrating skills.
- Youth will demonstrate and interview one-on-one with the judge, one exhibit at a time.
- The judging will be a combination of demonstrating these skills and answering interview questions from the judge. The judge will select a number of skills and knowledge based questions related to the booklet (not all of them).

## Horse Related \*

### Horse - Horse Related, Grades 3-5

### Horse - Horse Related, Grades 6+

### Exhibit Suggestions:

- An educational exhibit to show or explain something the 4-H'er made, did or learned or may explore consumer issues, breeds, careers, etc.
- Winning exhibits can be displayed at the State Horse Show. State trips will go to horse project members who did not receive a riding state horse show trip. If the Horse Related trips are not taken by non-riders then the trips can be taken by a member who is taking a state horse show trip.

### Requirements:

- Must be enrolled in the Horse Project to exhibit in this division
- Exhibits may be a model, poster, scrapbook, essay, and/or article. The exhibit should show or explain something the 4-H member has made, done, or learned in the project.
- Exhibits are conference judged with the exhibitor present.

## Halter and Performance Classes

(some classes no premium - no premium paid on key hole, barrels, jumping figure eight, or poles or speed dash for a broken pattern)

For ALL horse show classes that are separated into categories, the following groups will be used to determine a 4-H member's category:

Walk/Trot—Any age rider, must be in only walk/trot classes in the morning may compete in regular age group classes for games.

- **Junior (Jr.)** - Youth who have completed grades 3-5.
- **Intermediate (Int.)** - Youth who have completed grades 6-9.
- **Senior (Sr.)** - Youth who have completed grades 10 and up.

**In Carlton County all horse exhibitors must sign up for either a showmanship or groomsmanship class.**

Groomsmanship is intended for horses that are not trained for showmanship. The exhibitor will be judged using the scorecard for halter showmanship in the 4-H Horse Program Rule Book including only: Attire- #1, Equipment- #1, Horse- #1 and #5, Leading- #1, #2, #3, #5, and #8.

Please see the Minnesota 4-H Horse Program Rule Book, page 34, #1 for information on the same horse being ridden by different family members.

\*\* after Class signifies No points for State Horse Show

## Horse Training

Horse training classes will be judged at **7 a.m. on Saturday, August 17**. It is highly recommended by the HPDC that foals be weaned to safely be shown in horse training. To show your training horse in a performance class you must have completed training step 4 and achievement level 4.

Horse training - Step 1

Horse training - Step 2

Horse training - Step 3

Horse training - Step 4

Horse training - Step 5

Horse training - Step 6

## Showmanship

### Weanling or yearling showmanship

\*\* horse up to 1 year old; horse must be weaned to safely show in this class; this class will be judged at the same time as horse training.

Walk/Trot Halter Showmanship \*\*

Jr. Halter Showmanship \*\*

Intermediate. Halter Showmanship

Senior Halter Showmanship

Groomsmanship (\$1.50 premium)

## Performance/pleasure

Walk/Trot English pleasure (grade 3-13) \*\*

Junior English pleasure (grade 3-5)\*\*

Intermediate English pleasure (grade 6 -9)

Senior English pleasure (grade 10+)

Intermediate Ranch Pleasure (grade 6-9)

Senior Ranch Pleasure (Grades 10-11)

Senior Ranch Pleasure (Grades 12-13)

Walk/Trot English equitation (grade 3-13) \*\*

Junior English equitation (grade 3-5) \*\*

Intermediate English equitation (grade 6 - 9)

Senior English equitation (grade 10+)

Walk/Trot Western Pleasure and Walk/Trot Pony Pleasure (grade 3-13) \*\*

Pony Western pleasure (grade 3-13)

Junior Western pleasure (grade 3-5) \*\*

Intermediate. Western pleasure (grade 6-9)

Senior Western pleasure (grade 10+)

Walk/Trot Horsemanship-Walk/Trot Pony (grade 3-13) \*\*

Pony Horsemanship (grade 3-13)

Junior Horsemanship (grade 3-5) \*\*

Intermediate Horsemanship (grade 6-9)

Senior Horsemanship (grade 10+)

Bridle Path Pleasure (grade 3-13)

Walk/Trot Trail (grade 3-13) \*\*

Western Trail (grade 3-13)

Junior Ranch Pleasure (grade 3-5) \*\*

## Games

Junior Jumping figure 8 (grade 3-5) \*\*

Intermediate Jumping figure 8 (grade 6-9)

Senior Jumping figure 8 (grade 10+)

Junior Keyhole race (grade 3-5) \*\*

Intermediate Keyhole race (grade 6-9)

Senior Keyhole race (grade 10+)

Junior Barrel racing (grade 3-5) \*

Intermediate Barrel racing (grade 6-9)

Senior Senior Barrel racing (grade 10+)

Junior Speed Dash (grade 3-5) \*\*

Intermediate Speed Dash (grade 6-9)

Senior Speed Dash (grade 10+)

Junior Pole weaving (grade 3-5) \*\*

Intermediate Pole weaving (grade 6-9)

## Senior Pole weaving (grade 10+)

### Records

#### Advancement/Achievement Record

- Completion of achievement record for current year (\$2.00 premium)

### Cloverbuds

Cloverbuds will have the opportunity to participate in one of three lead line events at the Cloverbud Horse Show in the front arena at **6:30 p.m. on Friday, August 15th**. A responsible person (not the Cloverbud) must be in control of the horse at all times.

#### Cloverbud Horse Lead Line Barrel \*\*

#### Cloverbud Horse Lead Line Western Pleasure \*\*

#### Cloverbud Horse Lead Line Showmanship \*\*

#### Cloverbud Horse Poster \*\*

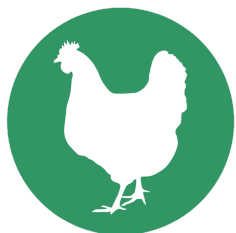
MN 4-H Cloverbud rule: Cloverbuds may participate with a horse in three classes: *Cloverbud halter/showmanship*, *Cloverbud western pleasure*, and *Cloverbud barrels*. If the horse is used in a riding setting, the Cloverbud may sit on the back of the horse with a responsible person (grades 6+) in control of the horse at all times. Helmets are required for the Cloverbud in any riding setting.

#### General Carlton County & Qualifying Show Rules

For complete rules see the Minnesota 4-H Horse Program Rule Book at: [z.umn.edu/mn4-hhorsehandbook](http://z.umn.edu/mn4-hhorsehandbook)

The Rule Book will include information regarding show attire, behavior, discipline, trainer policies, etc. (Copies are available either online or at the Extension Office).

Blue, red and white ribbons will be awarded at the judge's discretion for all disciplines and classes.



## Poultry

### Barn Superintendent: Sam Webster

The 4-H Poultry Show will be held at **2:30 p.m. on Friday, August 15** followed by Open Class. All poultry must be entered on Wednesday, August 13 from 4 to 8 p.m.

All exhibited birds, except pigeons, must be of this year's hatch. Poultry originating in Minnesota (except waterfowl and pigeons) need to be identified by a leg band and have a negative test for Pullorum-typhoid conducted within 90 days prior to entry. **Pullorum testing/leg banding will be available at the county fair from 4 to 8 p.m. on Wednesday, August 13.** If you have a record of origin (this includes a letter or certificate dated 2022 from the hatchery stating the hatchery is pullorum free) please bring this with you. Turkeys must be tested for *S.typhimurium* and mycoplasmas (this must be done prior to county fair) or have a statement of origin if less than 5 months old.

**All birds must be fed and watered by OWNERS twice a day. All grooming of livestock must be clearly done by the 4-H exhibitor, members of the immediate family or any other enrolled 4-H member (see pg. 11).**

#### Hatch Dates

All exhibited birds (except pigeons) must be of this year's hatch.

Suggested hatch dates are:

- Breeding Poultry and Waterfowl – January 1 or after
- Egg Production Chickens – March 1 or after
- Market Chickens – March 1 or after (should be 8-10 weeks old at fair) \*\*You may need two hatches of market chickens to accommodate an early county fair and (a late August) state fair.
- Market Domestic Turkey & Waterfowl – March 1 or after
- Pigeons - Must have previous year's seamless band or older on and be ID'd by May 16.
- Doves - Breeding pair must have previous years seamless band or older on.

- Guinea - January 1 or after.

### Weight Guidelines

To avoid over-finished market chickens, it is recommended that they be as near 8-10 weeks of age at show time as possible. Market ducks, geese and turkeys should be well filled out in the breast and leg.

### Requirements

- Egg production pen of two pullets will have two separate lots (one for white egg layers, and one for brown egg layers). Brown egg layers must be commercial purebred or hybrid, a hybrid is preferred. White egg layers must be hybrid.
- Poultry exhibited must be of this year's hatch and same breed when making your market or breeding pens.
- All poultry, except waterfowl, pigeons, and doves must have a Statement of Origin indicating birds are from a Pullorum-Typhoid free flock within 12 months prior to entry day, or have tested negative for Pullorum-Typhoid within 90 days prior to exhibition (test results must be included) in order to exhibit. A copy needs to be turned into the 4-H staff immediately when arriving at the fair.
- Breeding classes will be judged on breed characteristics using the American Standard of Perfection as a guide.
- 4-H exhibitors may show two pens in each breeding pen (all species, both standard and bantams). Only one pen may be shown in market and egg production lots. Exhibitors may enter one pen in each egg production category.
- Judges need not judge dirty or unsightly exhibits. Feed and water must be furnished by the exhibitor.
- Please remember that July and August are hot and that it is YOUR responsibility to keep your birds watered.

## Poultry Showmanship

Poultry exhibitors are encouraged to register for showmanship. Clothing traditions are light colored, long-sleeved tops.

**Sr. Poultry Showmanship (completed grade 9+)**

**Intermediate. Poultry Showmanship (completed grade 6-8)**

**Junior Poultry Showmanship (completed grade 3-5)**

## Cloverbud Poultry

**Cloverbud Poultry Showmanship** (completed K-grade 2; a responsible person must be in control of the animal at all times)

**Cloverbud Poultry Poster** - Posters are due at the 4-H office by 6 p.m. on Tuesday, Aug 12, 2025 (General Judging day)

## Chickens

**Market pen of two males or two females \***

**Breeding pen of one male & two females \***

**Bantam Breeding pen of one male & two females \***

**Egg production pen of two pullets, White egg layers \***

**Egg production pen of two pullets, Brown egg layers \***

**Egg production pen of 2 pullets; non commercial layers (Not Eligible for State Fair)**

## Doves

**Purebred breeding pair \***

## Ducks

**Market pen of two males or two females \***

**Bantam Breeding pen of one male & two females \***

**Breeding pen of one male & two females \***

## Geese

**Market pen of two males or two females \***

**Breeding pen of one male & two females \***

**Guinea** Note: ONLY Pearls, Whites, and Lavender breeds can be shown at State Fair

**Market pen of two males or two females, same breed \***

**Breeding pen of one male & two females, same breed \***

## Pigeons

**Utility, 1 Breeding Pair \***

**Utility, 1 Young bird Male or Female, 1 young bird, this year band \***

**Fancy, 1 Breeding Pair \***

**Fancy, Young bird Male or Female, 1 young bird, this year band \***

Flying, 1 Breeding Pair \*

Flying, Young bird Male or Female, 1 young bird, this year band \*

### Turkeys (Domestic only)

Market pen of two males or two females \*

Breeding pen of one male & two females \*

### Other Poultry Classes

**Show and Hobby one bird (Not State Fair Eligible)** Show & Hobby is a class designed for birds not reserved for market, production, or breeding. The birds should be of a rare or fancy variety and show unusual characteristics, not particularly desired in the other classes.

### Chicken Costume Contest (Not State Fair Eligible)

### Poultry Poster

Posters are due at the 4-H office on general project judging day by 6 p.m.

- Educational poster to educate the public visiting the barns about an aspect related to poultry.
- Size 14"x22" (state fair requirement)
- Educational or promotional posters may be selected to advance to the state fair. See poultry poster contest section of [state fair premium book](#) for more information.



## Rabbit

**Barn Superintendent:** Desirae Garza

The 4-H Rabbit Show will be held at **4:30 p.m. on Thursday, August 14th** followed by Open Class. All rabbits must be entered on Wednesday, August 13th between 4 & 8 p.m.

### General Instructions

- All rabbits must have permanent left ear tattoos to be eligible for the State Fair (May 15 ID deadline).
- Entries must be disease-free and mite-free.
- Only purebreds may be entered in Breeding Class.
- All breeds recognized by the American Rabbit Breeders Association are eligible. Rabbits will be judged according to ARBA Standards.

**All grooming of livestock must be clearly done by the 4-H exhibitor, members of the immediate family, or any other enrolled 4-H member (see pg. 11)**

**Rabbit Showmanship** All rabbit exhibitors are encouraged to register for showmanship. Clothing traditions are white long-sleeved tops or lab coats.

**Senior Rabbit Showmanship (completed grade 9+)**

**Intermediate Rabbit Showmanship (completed grade 6-8)**

**Junior Rabbit Showmanship (completed grade 3-5)**

### Cloverbud Rabbits

**Cloverbud Rabbit** completed K-gr. 2; a responsible person must be in control of the animal at all times)

**Cloverbud Rabbit Poster** - Posters are due at the 4-H office by 6 p.m. on Tuesday, Aug 12, 2025 (General Judging day)

### 4 Class - Small Breeds

**Senior Buck over 6 months of age**

**Junior Buck under 6 months of age\***

**Senior Doe over 6 months of age\***

**Junior Doe under 6 months of age\***

**4 Class (small) rabbit breeds include Dutch, Florida White, Holland Lop, Jersey Woolly, Mini Lop, Mini Rex, Netherland Dwarf, Polish, Rex, American Fuzzy Lop, American Sable, Dwarf Hotot, English Angora, French Angora, Satin Angora, Belgian Hare, Britannia Petite, Standard Chinchilla, English Spot, Harlequin, Havana, Himalayan, Lilac, Lion Head, Rhinelander, Silver, Silver Marten, Thrianta and Tan.**

### 6 Class - Large Breeds

Senior Buck over 8 months of age\*  
Intermediate Buck 6-8 months of age\*  
Junior Buck under 6 months of age\*

Senior Doe over 8 months of age\*  
Intermediate Doe 6-8 months of age\*  
Junior Doe under 6 months of age\*

*6 Class (large) rabbit breeds include New Zealand, Satin, American Giant Angora, Bevern, Californian, Champagne d'Argent, Checkered Giant, American Chinchilla, Giant Chinchilla, Cinnamon, Crème d'Argent, Flemish Giant, French Lop, Hotot, English Lop, Palomino and Silver Fox.*

## Market Rabbit

Single fryer, 3.5 to 5.5 lbs., not over 70 days old\*  
Pen of 3 fryers, 3.5 to 5.5 lbs., not over 70 days old\*

### Rules

- **1 rabbit max per class**
- Each cage can only contain one rabbit apart from a pen of three market rabbits.
- Attire: Long sleeved shirts are required for judging.
- Each rabbit must be permanently tattooed in the animal's left ear for identification purposes. Each animal is required to have a unique tattoo. Families can NOT use the same tattoo for multiple rabbits of a different breed or gender. A legible tattoo is "a tattoo that shows ink below the skin and must be readable." Permanent marker or ink is not agreeable.
- Lease paperwork needs to be submitted by the identification deadline (May 15th), if leased.
- Classes may be combined, if low class numbers warrant this.

### Requirements

- Purebred rabbits are those which have a three-generation pedigree showing the ancestral background being of all the same breed or coming from purebreds of the same breed, making it eligible for registration. Rabbit pedigree papers are not required for showing rabbits.
- All breeds recognized by the American Rabbit Breeders Association (ARBA) are eligible. Rabbits will be judged according to ARBA standards & Judge's discretion of ARBA standards. Crossbreds are not eligible to be shown.
- Each rabbit must be permanently tattooed in the left ear for identification purposes.
- No pre-junior rabbits accepted.
- All animals must meet weight requirements. If they do not meet weight requirements (as outlined in the ARBA Standard of Perfection – copies are available upon request from the Extension Office), by Judge's discretion, members will receive a lower placing. (i.e. Purple would drop to a blue, blue would drop to a red, red would drop to a white).



## Sheep

**Barn Superintendent:** Jon and Nathan Finifrock

The 4-H Sheep Show starts at **12:30 p.m. on Friday, August 15**, beginning with the Lamb Lead; Open Class show follows. All sheep must be stalled by 12 Noon on Thursday, August 14.

***All grooming of livestock, including clipping, trimming and blocking (all species) must be clearly done by the 4-H exhibitor, members of the immediate family or any other enrolled 4-H member (see pg. 11). All sheep must have an approved scrapie program ID (including Cloverbud sheep).***

## Sheep Showmanship

*Clothing traditions are western-style blue jeans and boots. All sheep exhibitors are encouraged to register for showmanship.*

Senior Sheep Showmanship (completed grade 9+)  
Intermediate Sheep Showmanship (completed grade 6-8)  
Junior Sheep Showmanship (completed grade 3-5)

## Cloverbud Sheep

**Cloverbud Sheep** (completed K to Gr. 2) - A responsible person must be in control of the animal at all times)

**Cloverbud Lamb Lead** (completed K to Gr. 2) - A responsible person must be in control of the animal at all times)

**Cloverbud Sheep Poster** - Posters are due at the 4-H office by 6 p.m. on Tuesday, Aug 12, 2025 (General Judging day)

**Breeding Ewe** All CLASSES are Combined for registered and commercial

**Fall Ewe Lamb**

**January Ewe Lamb**

**February Ewe Lamb**

**Aged Ewe\*** not eligible for state fair

**March Ewe Lamb**

**Yearling Ewe Lamb**

**Wether Dam Ewe Lamb**

**Wether Dam Yearling Ewe**

### Birth Dates:

Fall Ewe Lamb	Born between September 1 - December 31 of previous year (2024)
January Ewe Lamb	Born in January of current year (2025)
February Ewe Lamb	Born in February. of current year (2025)
March Ewe Lamb	Born in March of current year (2025)
Yearling Ewe	Over 1 year and under 2 years of age & not show evidence of 4 permanent incisors
Wether Dam Ewe Lamb	Born on or after December 1 of previous year (2024)
Wether Dam Yearling Ewe	Over 1 year and under 2 years of age & not show evidence of 4 permanent incisors
Market Lamb	Born on or after December 1 of previous year (2024)

## Market Lamb

**Market lamb - Speckle Face**

**Market lamb - Black Face**

**Market Lamb - White Face**

**Market Lamb - Hair Breeds**

### Requirements

- Final determination of light or heavy weight class to be made by the judge just before show time.
- Recommended minimum weight for State Fair is 105 pounds; recommended maximum weight is 170 pounds. Market animals exceeding the maximum weight will not be eligible for State Fair Champion.
- Lambs shown in the hair breeds division must be of straight hair sheep breeding. Crossbred hair sheep and wool breeding is not acceptable. See [2025 Animal Science Updates \(z.umn.edu/4-HAnSciUpdates\)](https://z.umn.edu/4-HAnSciUpdates) for more information

## Lamb Lead

The Lamb Lead Show and interviews will be held at **12:30 p.m. on Friday, August 15th**

### Requirements

- Exhibitors must groom and train a sheep and must wear a garment made from at least 60% wool. Garment is defined as a piece of clothing covering a main part of your body (not socks or accessories).
- Exhibitors will be judged based on project knowledge, poise, their outfit, and their lamb.
  - Classes may be combined depending on the number of entrants. Exhibitors must submit a 4-H "Lamb Lead Information Sheet" with entry (obtain one from the County Extension Office).

## Fleece

### Requirements

- All 4-Hers receiving a blue ribbon on their fleece may exhibit at the State Fair; no housing will be provided!



## Swine

**Barn Superintendent:** Matt & Hailie Hacker

The 4-H Swine Show is at **4 p.m. on Thursday, August 14th** with open class to follow. All swine must be stalled by 8 p.m. on Wednesday, August 13th (weighing will take place at that time).

**All grooming of livestock, including clipping, trimming and blocking (all species) must be clearly done by the 4-H exhibitor, members of the immediate family or any other enrolled 4-H member (see pg. 11).**

### Swine Showmanship

All swine exhibitors are encouraged to register for Showmanship.

**Senior Swine Showmanship (completed grade 9+)**

**Intermediate. Swine Showmanship (completed grade 6-8)**

**Junior Swine Showmanship (completed grade 3-5)**

### Cloverbud Swine

**Cloverbud Swine Showmanship** (completed K-gr. 2; a responsible person must be in control of the animal at all times)

**Cloverbud Swine Poster** - Posters are due at the 4-H office by 6 p.m. on Tuesday, Aug 12, 2025 (General Judging day)

### Breeding Gilt

**Registered or Commercial**

**January Gilt**

**March Gilt**

**February Gilt**

**Combined registered and commercial gilt born on or after January 1 of current year \***

**Birth Dates:**

January Gilt	Born in January of current year (2025)
February Gilt	Born in February of current year (2025)
March Gilt	Born in March of current year (2025)
Market Barrow	Born on or after Jan. 1 of the current year (2025). Recommended farrow date in January or February
Market Gilt	Born on or after Jan 1 of the current year (2025). Recommended farrow date in January or February

### Market Barrow/Market Gilt

**Heavy or Light weight**

**Market Barrow \***

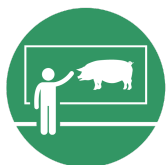
**Market Gilt \***

*Market gilts will again be shown at the state fair. (Note: Champion barrows and gilts will never compete against each other, and auction limitations will be in place.)*

#### Requirements

- All barrows and gilts must be tagged with a Minnesota 4-H ear tag by the May ID deadline in accordance with current identification procedures.
- All barrows and gilts must be ear notched using the universal ear notch system by the May ID deadline.
- Animals being shown at the state fair must carry the same identification from the May animal identification date to the State Fair. If an animal's ear tag is lost, contact the Extension Office.
- Recommended minimum weight for state fair is 220 pounds; maximum state fair weight is 300. Market barrows and market gilts weighing less than 220 pounds will show in their own class "Super Lightweights" and those 301

pounds and over will show in their own class "Super Heavyweights" and will be eligible for blue, red or white ribbons and are not eligible for champions at state fair.



## Livestock Demonstration

### Exhibit Suggestions

- Demonstrate how to care for an animal or prepare it for showing at the fair.
- Teaching others how to tie a halter.
- A talk on preventative or veterinary care for a species.
- Demonstrate how to tattoo an animal.

### Requirements

- Demonstrations must include beef, dairy, dairy goat, llama - alpaca, meat goat, poultry, rabbit, sheep or swine content and must use a live animal in the demonstration. Other demonstrations involving animals can be entered under the demonstration category.

## Cloverbud Exhibits

- **5 General Exhibits**
- **1 Exhibit Per Livestock Species**
- **1 Poster Per Livestock Species**
- **1 Pet Show Exhibit**
- **Pre-Fair Events Participation**

### Judging: Tuesday, August 12

Cloverbuds (Grades K-2): Judging 2:30 – 6:00 p.m.

### About The Project

4-H Cloverbuds do the same projects as older 4-H'ers, but in a way appropriate to their age (kindergarten through second grade). Cloverbuds explore and learn about the world in a non-competitive environment by doing fun activities of their own choice, like making cookies or doing a craft project, with the guidance of parents or other helpful adults.

The Cloverbuds project can help broaden the member's understanding of 4-H, get them excited about the possibilities of what they can do in 4-H, practice speaking skills while telling others about their projects, learn to evaluate their own work, celebrate accomplishments, and make a connection with other youth and families in 4-H.

### Parent Involvement

We love having parents involved! Parents can help youth do as much of the project themselves as possible. If a parent needs to do most of the work, then the project is too hard for the member. At the fair, you may be with your Cloverbud, but stand in the background letting the members answer all of the questions. Your job is to tell the member how proud you are of them after the experience and ask them to tell you what the judge said about their exhibit. Having them tell you about the experience will help them remember more about how to improve.

### Preparing For The Fair

Practice judging at home before you go to the fair. Some sample questions could be:

1. Tell me about what you did this year in 4-H.
2. What did you like best about your project?
3. What would you do differently next time?
4. What things would you do the same?
5. If you were going to teach someone else how to do this project, what would you tell them?
6. What was the hardest part?

### Cloverbud Requirements

All Cloverbud projects follow the same rules and procedures for registration and fair exhibition as regular projects with the exception of the following:

- All Cloverbuds classes are "participation-only", meaning that only participation ribbons will be awarded.
- Cloverbuds DO NOT need to be LQA&E certified, nor do they need to turn in animal ID forms for animal science projects.
- Families may choose one of two acceptable ways to guide and monitor involvement in non-mounted activities:
- The responsible person is in control of the animal with the cloverbud at their side.
- The cloverbud is in control of the animal with the responsible person at their side to assist or take control of the animal when needed or as directed by staff, volunteers or show managers.
- When a cloverbud is mounted on a horse, the horse must always have a lead line and be under the control of the responsible person.

Additional Cloverbud Policy information is available on page 13 of the Carlton County 4-H premium book or by visiting: [Cloverbud Informational Sheet](#)

Note - Cloverbud exhibits, including livestock posters, should not be judged blue, red and white. Instead, all should receive participation recognition.

### Exhibit Suggestions

- We encourage cloverbuds to review the project area requirements in the general project and animal science project areas to learn more about what would be required of their project when they reach 3rd grade. (e.g. Photography- pictures require a mat and cannot be framed, recipe card with food project)
  - General projects could include: 3 cut flowers in a vase, a potted plant, vegetable or fruit art, a nutritious food snack (include a recipe card), a simple item you made for your home like a pillow, placemat, decoration, etc., rock collection, paper bag puppet, 4 interesting objects of nature, tree leaf collection, display of insects, simple craft item, or anything else you can think of. (Think about how your project will be displayed at the fair, review the static project requirements within the specific project area for ideas for displaying or hanging your exhibits, poster or display sizes, etc.)
  - Animal Science posters could include how you care for your animal, animal breeds, fun things your animal can do, what your animal eats, etc.

### Requirement


- Cloverbuds are youth who have completed grades K-2. Cloverbud programs emphasize cooperative rather than competitive experiences—in accordance with our guidelines all cloverbuds will receive a participation ribbon, rather than the blue, red, white or champion ribbon.
- Cloverbud general exhibits can be made at home, at a 4-H or non 4-H meeting or event.
- Cloverbud animal science areas include live animals or posters in the following Beef, Dairy, Goat, Horse, Llama & Alpaca, Poultry, Rabbit, Sheep & Swine. Animal-related project areas must follow the [MN 4-H Cloverbud policy](#) that requires a responsible adult or older youth to handle the animal. This includes pet and livestock projects.
- Review the [Cloverbud Information Sheet](#) to ensure the project is developmentally appropriate and follows 4-H cloverbud policies.

## General Cloverbud Exhibits

Cloverbuds may bring up to five exhibits for this area.

*For exhibit suggestions, please refer to the general exhibits section of the premium book..*





## Cloverbud Fashion Revue

## Cloverbud Food Revue

## Cloverbud Performing Arts

## Cloverbud Public Presentation

## Cloverbud Pet Show

### Cloverbud Show Your Pet

- **An adult** must be present to hold the pet during the judging. Pet must be in a cage or under control of an **adult** at all times during the show.

### Cloverbud Livestock Exhibits

Cloverbuds may bring one exhibit for each species and one poster for each species. Posters are due at 4-H office **6 p.m. on Tuesday, August 12th** (general project judging day)

#### Cloverbud Beef

##### Cloverbud Beef Poster

*More information on page 19*

#### Cloverbud Dairy

##### Cloverbud Dairy Poster

*More information on page 21*

#### Cloverbud Dairy Goat

##### Cloverbud Dairy Goat Poster

*More information on page 23*

#### Cloverbud Meat Goat

##### Cloverbud Meat Goat Poster

*More information on page 24*

#### Cloverbud Lead Line Barrel

##### Cloverbud Western Pleasure

##### Cloverbud Lead Line Showmanship

##### Cloverbud Horse Poster

*More information on page 32*

#### Cloverbud Poultry

##### Cloverbud Poultry Poster

*More information on page 34*

#### Cloverbud Rabbit

##### Cloverbud Rabbit Poster

*More information on page 35*

#### Cloverbud Lamb Lead - Sheep

##### Cloverbud Sheep

##### Cloverbud Sheep Poster

*More information on page 36*

#### Cloverbud Swine

##### Cloverbud Swine Poster

*More information on page 38*

### Cloverbud Presentation Day Events

Cloverbuds can participate in any events held prior to the county fair to include: Fashion Revue, Food Revue, Performing Arts, and Public Presentations.

If you participated in any events held prior to the county fair, please remember to include the event on your county fair registration to receive premium dollars.

#### Cloverbud Fashion Revue - Purchased Clothing

## Cloverbud Fashion Revue - Constructed Clothing

## Cloverbud Fashion Revue - Upcycled Clothing

*More information on page 40*

### Requirement:

Cloverbuds are youth who have completed grades K-2. Cloverbud programs emphasize cooperative rather than competitive experiences—in accordance with our guidelines all cloverbuds will receive a participation ribbon, rather than the blue, red, white or champion ribbon.

Cloverbud general exhibits can be made at home, at a 4-H or non 4-H meeting or event.

Cloverbud animal science areas include live animals or posters in the following Beef, Dairy, Goat, Horse, Llama & Alpaca, Poultry, Rabbit, Sheep & Swine. Animal-related project areas must follow the MN 4-H Cloverbud policy that requires a responsible person be with the Cloverbud members at all time during Cloverbud activities when in the presence of an animal. This includes pet and livestock projects.

Review the Cloverbud Information Sheet to ensure the exhibit is developmentally appropriate and follows 4-H cloverbud policies.

There are no State Fair trips in this division.

## General Exhibits

**4-H Members (Grades 3+): 5 exhibits per class** *(unless noted in specific areas)*

**Judging: Tuesday, August 12**

- **Cloverbuds (Grades K-2): Judging 2:30 – 6:00 p.m.**
- **4-H Members (Grades 3 +): Judging 2:30 – 6:00 p.m.**

*4-H Members may register beginning at 12:45 p.m.*



## Aerospace

Share what you've learned about the latest in aerospace technology including airplanes, rockets, helicopters, drones, balloons, etc. Aerospace includes any objects that fly within the Earth's atmosphere and outer space.

### Exhibit Suggestions:

- Build a model (rocket, airplane, satellite) and identify the parts.
- Explain the science of how airplanes fly.
- Explain how the model rocket flies.
- Design or build your own rocket or airplane and explain how it works
- Identify parts of a hot air balloon and how they work.
- Discover and identify the basic parts of a helicopter and how they work.
- Make and demonstrate a hang glider.
- Demonstrate a drone and how it is used.
- Research UFOs and share your findings.
- Compare and contrast different types of kites (flat, box, parafoil, etc).
- Discuss the pros and cons of different types of flight (airplane vs helicopter vs jet, etc).
- Explore careers in this project area and explain why they interest you

### Requirements:

- Models or other project objects can be used during the judging process.
- Flyable models should be ready for flight (do not include fuel or engines); recovery systems should be in place and operative.
- Members should be familiar with safety codes in the 4-H curriculum or that accompany the kit.

## Agronomy (see Plant Science section)



### Bicycle

#### Exhibit Suggestions

- Exhibit showing built, restored, reconditioned or rebuilt bikes.
- Display showing types of bikes, parts of a bike, maintenance, traffic rules, bicycling hazards, city/county/regional bike or active transportation plans, how to wear a helmet, equipment used to teach others about bike repair or first aid, etc.
- Documentation (such as slideshow, notebook, picture book, poster or film) of a bike rodeo or other bike event you helped with, or research on some other aspect of bicycling that was presented to a class, committee or service club.

## Cats (see pets section)



### Child & Family Development

Share what you've learned about being self-reliant and responsible, how to handle emergencies and develop home-alone skills. Child & Family Development includes home safety, age-appropriate toys, nutritious snacks for children and how to create a poem, story or game.

#### Exhibit Suggestions:

- Toy, game, puzzle, puppets, art/craft materials, etc., made from new or recycled/throw-away material.
- Babysitting kit/travel kit/rainy day kit.
- Original book, story, poem, song, play, cookbook, audio or video tape and narrative, activity book, safety manual for children.
- Scrapbook, photographs, items, reports, video, etc., on family heritage with description of what was learned about self and family.
- A creatively developed program and/or item used for or with a person with differing abilities (i.e. learning difficulties, physically impaired, etc.).
- Display exploring different types of families (nuclear, blended, single parent, childless, foster, etc).
- An educational display explaining foster care/foster families in Minnesota
- Display exploring resources for children alone at home (i.e. activities, games, kits).
- An educational display about youth mental health. Explore strategies to help youth cope with stress, anxiety, etc. with busy bags, sensory bottles/activities, conversation tips, etc.
- Display sharing your experience job shadowing an early childhood education provider, child care provider or another youth worker.
- An educational display with resources available to lower income families (i.e. WIC, Food Shelf, etc).

#### Requirements:

- Exhibitors should be prepared to discuss, in conference judging, the age and other characteristics of the child for whom the exhibit is intended and how the exhibit contributes to the child's growth, development, and well-being.
- If the exhibit is designed to be interactive with children, the item should be used with children before exhibiting and a photograph of this activity should accompany the exhibit. Signs of use will not detract from the placing of the exhibit.



## Citizenship

### Exhibit Suggestions

- Highlight of community projects and/or citizenship activities which you or your club completed under your leadership. Include plans of action as well as the impact of each.
- An educational display illustrating the description of a service project, which may include: how you identified the need in your community, developed a project to address the need, carried out the project, and reflected on the results.
- An educational display illustrating how you've researched, reflected, and learned more about yourself, your family, and your friends.
- An educational display illustrating how you've researched, reflected on, and learned more about your community, its history, and how to be a good neighbor.
- An educational display illustrating how you've developed a tour of a local community, government or community agency; learned how government functions; and learned about police, fire protection, health, sanitation, safety, and tourism in your community.
- A display on different parts of the world, highlighting their cities, culture, history and more.
- A display explaining how you organized and led tours in your towns, communities, courthouse or historic places.
- An educational display on how the government works or the functions of various government agencies.
- A display on community organizations, agencies or service departments like fire departments, police departments, sanitation, tourism, etc.
- Complete a service project and create a display of what you did and why you did it.



## Clothing & Textiles

Clothing & Textiles exhibits should be finished, clean and pressed for exhibition. Exhibits can be used before showing, but should be cleaned before exhibiting. Garments and sewn non-garments should be appropriate for the skill level and experience of the exhibitor.

### Constructed Clothing

#### Exhibit Suggestions

- Include an information tag listing: pattern company name and number or inspirational photo for design, fiber content of fabric and care instructions.
- Constructed garments such as a blouse, shirt, top, skirt, pants, sweatshirt, jumper, dress, outerwear, etc.
- Constructed garments utilizing a fabric or technique new to the exhibitor, such as synthetic suede, active sportswear, micro-fibers, satin, etc.
- Using tailoring techniques to construct a garment
- Wearable art that can be included as part of the constructed garment.
- Educational poster or display on a clothing or textiles subject of your choice. Examples: career in industry, difference in fabric, how fabric is made, evolution of clothing, cost comparison, clothing selection, care of fabric, etc
- Garment mended, repaired or recycled, with color photo of original garment and explanation of steps used.

## Upcycled Clothing

### Exhibit Suggestions

- Significant alterations to a garment. Examples: oversized t-shirt made into a cinched t-shirt dress, alternating the style of the garment, updating an old prom dress to make it current, etc.
- Wearable art that can be added to purchased garments.

### Requirements

- An upcycled garment is one that is constructed from a previously worn garment that has been updated/alterd in a way to produce a new garment.
- Colored photo of original garment and colored photo of new garment

## Purchased Clothing

### Exhibit Suggestions

- Additional information that could be included in 8 ½" x 11" binder:
  - Cost per wear
  - Cost comparison (construction vs. purchased)
  - Inventory of wardrobe (not including undergarments)
  - Educational facts about fabric in garment(s)
  - Additional photos showing ways it can be used in existing wardrobe
  - Accessories/shoes worn
  - Any other educational information not listed above
- Purchased garment such as a blouse, shirt, top, skirt, pants, sweatshirt, jumper, dress, outerwear, etc.
- Pre-used garments not altered. Examples: thrift store, garage sale, hand-me-down, etc.

### Requirements

- The purchased garment or outfit must be accompanied by an 8-1/2" x 11" binder with the following information:
  - Colored photo of member wearing the garment. Label photo with name, county, and color of complexion, hair and eyes.
  - Cost of garment and explanation of why garment was purchased
  - Fabric content and care of garment
  - Examples of ways it will be used in existing wardrobe
  - Sale receipt and tags, if available

## Sewn Non-Garment

### Exhibit Suggestions

- Non-clothing article using a pattern or your own idea.
- Non-clothing sewn, constructed item. Examples: simple home or clothing accessory items such as a pillow, apron, book bag, belt, placemat, gym bag, sewing kit, etc.

### Requirements

- Include an information tag listing: pattern company/kit name or source, fiber content of fabric and care instructions

**Note:** At State Fair, clothing exhibitors can use the same garment to participate in both fashion revue and the corresponding clothing & textiles project in the same year. Example: Constructed fashion revue exhibits can be judged in the constructed clothing area (or vice versa).

## Computers (see technology section)



### Consumer Education & Money Management

#### Project Description

Share what you've learned about being a good consumer as you explore smart shopping, income and expenses, saving money, credit, and needs vs. wants.

#### Exhibit Suggestions

- A budget workbook, income/expenses graphs, impact of supply chains on consumers, savings plans, etc.
- Junior exhibitors: a basic comparison of similar products with different pricing.
- Intermediate exhibitors: include additional aspects of products other than just price
- Senior exhibitors: compare numerous components (nutritional value, cost per ounce, fabric content, longevity, etc).



### Crafts & Fine Arts

#### Crafts

##### Exhibit Suggestions

- For a beginner, choose a project that teaches new techniques. For advanced, choose a project requiring masterful craftsmanship.
- Work directly from a kit, diamond painting, social media influenced/inspired, LEGO kits, model replicas, no sew/tie blankets, ceramic casts, paint by number, etc.

#### Requirement

- Each exhibit will be evaluated on its individual merit as a craft/kit.
- Emphasis is on the creative process and the implementation of design elements and principles. The craft/kit exhibit develops from someone else's ideas and can be easily replicated, modified and repeated by others.
- All projects need to be presented in a finished manner.

#### Fine Arts

##### Exhibit Suggestions

- For a beginner, choose a project that teaches new techniques. For advanced, choose a project requiring mastery.
- Original work (no kits) in drawing, painting, sculpture, paint pouring, textiles, pottery, jewelry making, fiber art, quilling, etc

#### Requirement

- Each exhibit will be evaluated on its individual merit as an original fine art.
- Emphasis is on the creative process and the implementation of design elements and principles. The fine art exhibit should show proof that it is developed from the 4-H'er's own ideas and imagination.
- All art objects must be appropriately finished. For state fair eligible: exhibits must be ready for hanging, displaying, etc. (i.e. wire or hooks on paintings, bases for 3 dimensional work, etc.)



## Creative Writing

### Project Description

Exhibits could include written short stories, poems, essays, play scripts, speeches, memoirs, social media posts, articles, blog posts, graphic novels, etc.

### Exhibit Suggestions

- Series of original poems.
- An original short story.
- A children's story or a story written specifically for young children, typically includes illustrations
- Series of social media posts or an article educating the public on a topic you are passionate about.
- An original graphic novel including characters' dialogue, plot line and illustrations.
- A display on the different types of poems or your favorite author
- A display on "What is Creative Writing?"

### Requirement

- Creative Writing exhibits should be an original written piece; if the work of others are quoted or included, be sure to include proper citation.
- Display your work in a way that can be viewed by fairgoers (printed in a binder, written on a canvas, hung on a display, etc.)



## Engineering Design

### Engineering Design

#### Project Description

Engineering design projects are the creation, building, or tackling of solutions. Key to these projects is employing the engineering design process to effectively develop solutions.

### Exhibit Suggestions

- Using everyday items to build a simple machine to complete a simple task
- Using everyday items to create a product to solve a real life situation
- Explore Engineering Design by using LEGO bricks to build and test creative solutions to real-world challenges or buildings
- Engineering a bridge – using everyday items to create a bridge to sustain 5 pounds of weight
- Engineering an amusement park ride – Use KNEX or other materials to design and build an amusement park ride
- Engineering a catapult/trebuchet – use everyday items to create a machine to launch a marshmallow a minimum of 3 feet
- Engineer a wind turbine to solve a problem (for example: using the wind energy to lift a bucket)
- Explore careers in this project area and explain why they interest you

### Requirement

- Provide a drawing of your design, including a description of the idea, problem or challenge being solved and an explanation of how the design process was used to develop a solution

## Engineering Design Challenge Level 1 & 2

Engineering Design Challenge Team Member

Level 1 - grades 3 -8 (suggested)  
Level 2 grades 7 - 12 (suggested)  
All members of the team must register to participate

An Engineering Design Challenge machine is based on a Rube Goldberg-type machine, an overly complex contraption designed to accomplish a simple task. The best machines use a variety of everyday items to create a series of chain-reaction steps to accomplish a simple task. In the project, youth employ engineering, physics, humor, and storytelling to create their machine.

#### Exhibit Suggestions

- Machine (tabletop)
- Display, binder, poster, and video illustrating the process of the doing the activity/project

#### Requirements

- Please refer to the [Engineering Design Challenge Level 1 and 2 Handbooks](https://z.umn.edu/4hedc) (z.umn.edu/4hedc) for complete details.
- Teams size 2 to 9 members
- The machine must complete a minimum of 10 steps
- The machine must operate in 2 minutes or less
- Machine size is 36 inches by 36 inches (standard card table)
- Describe how an engineering design process was used to complete the project.
- Provide a journal record illustrating the process of completing the project.
- Teams advancing to the State Fair will need to submit a video prior to attending the State Fair

Note: The Engineering Design Challenge opportunity will take place at the Minnesota State Fair. Teams will participate in-person and present their machines for judging during their general encampment. Videos of machines running will be needed for the MN State Fair. Youth under 6th grade will receive participation ribbons only. Please refer to the [Engineering Design Challenge Level 1 and 2 Handbooks](https://z.umn.edu/4hedc) (z.umn.edu/4hedc) for complete details.



## Exploring Animals

#### Project Description

Intended as an introductory project area for youth who have limited experience with livestock/animal science. This area is a pathway to more in-depth study of the animal.

#### Exhibit Suggestions

- An educational exhibit to show or explain something 4-H'er made, did, learned, or may explore consumer issues, breeds or careers.
- Poster, journal, video, 3 ring binder of animal being explored.
- Explore basic care & handling, basic feeding, basic housing, animal welfare & ethics, etc.

#### Requirements

- This area is for 4-H'ers who wish to learn more about a given species. Animal ownership is not required.
- Exploring Animals include: Beef, Dairy, Dairy Goat, Meat Goat, Llama/Alpaca, Poultry, Rabbit, Sheep or Swine.
- Youth interested in cats, dogs, horses or other domesticated pets (guinea pigs, snakes, rats, etc) should see appropriate sections of the premium book.

## EXPLORING THE ENVIRONMENT/ENVIRONMENTAL SCIENCE (see Natural resource section)



### Fashion Revue

**Fashion Revue Constructed Clothing**

**Fashion Revue Purchased Clothing**

**Fashion Revue Upcycled Clothing**

#### Exhibit Suggestions

- Judging is on the overall completed look which includes the outfit, accessories and overall appearance

#### Requirements

- Participants may model any clothing they have constructed, purchased or upcycled as a part of their 4-H clothing project.
- Garments are required to be modeled during conference judging.

#### Fashion Revue Constructed or Purchased or Upcycled Exhibit Suggestions:

Judging is on the overall completed look which includes the outfit, accessories and overall appearance

#### Fashion Revue Constructed or Purchased or Upcycled Requirements:

Participants may model any clothing they have constructed, purchased or upcycled as a part of their 4-H clothing project. Garments are required to be modeled during conference judging and fashion show.

**Note: At State Fair, clothing exhibitors can use the same garment to participate in both fashion revue and the corresponding clothing & textiles project in the same year. Example: Constructed fashion revue exhibit can be judged in the constructed clothing area (or vice versa).**



### Fishing Sports

#### Exhibit Suggestions

- Fish identification. Describe the habitat and food needs of selected fish; develop a panel display explaining the life history of a fish; create a model or exhibit identifying the parts of a fish.
- Fishing Knots: Identify how and where each knot is used; fishing equipment which is made or repaired such as lures, fishing rods and reels, ice fishing rig, or other fishing equipment
- Safety practices and techniques that are related to fishing (& ice fishing) or boating
- Examples of how water quality affects the fish ecosystem
- Create a display or diagram of Aquatic habitats, invasive species
- Tactics to fish for various species of fish, techniques and equipment used
- Cultural aspects of fishing
- Regional differences across the US/world. (Types of fish, environments, ways to fish, considerations)
- Research commercial fishing for food industry
- Explore careers in this project area and explain why they interest you
- Local Department of Natural Resources fishing regulations

### Requirements

- If any lures or pieces are part of a display, ensure that pieces are secured and hooks are not going to be a safety concern (enclosed).
- Do not include live fish as part of the exhibit.



## Food & Nutrition

### Foods

#### Exhibit Suggestions

- Food items such as:
  - Bars & Cookies (no commercial mixes)
  - Breads (no commercial mixes)
  - Cakes (no commercial mixes)
  - Pastries (no commercial mixes)
  - Gluten Free Baked Goods
  - Homemade Meal
  - Other Homemade Food
  - Fun with Convenience Foods
  - Recipe Adaptation to Improve Nutrition
  - Cake/Cupcake & Cookie Decorating
- Food science experiment
- Exhibit showing food and/or kitchen safety.
- Investigate food allergen of your choice
- Display about careers in the food industry

### Requirements

- Exhibits may be food items and/or displays.
- Exhibitors should be prepared to discuss with the judge: recipes, references, information sources, methods, etc., as appropriate to that exhibit.
- Exhibits containing perishable foods, which may be discarded, must include a colored photograph of the food. Print the photo and recipe on an 8 ½" x 11" paper.

**Note:** If food safety is a concern, judges reserve the right not to taste and/or judge foods items.

## Nutrition

#### Exhibit Suggestions

- One serving of nutritious food (vegetable or fruit dish, snack, bread, dairy, etc.). Include 8½ x 11 poster showing nutritional value, recipe, and a photo of the food.
- Study of nutrients needed for yourself or someone else, using the dietary guidelines and MyPlate.
- Make a food or fitness plan for yourself or someone else and show how it relates to nutritional and energy needs. (Example: an athlete on a volleyball team, a teen who doesn't have a lot of time).
- Adapt a recipe(s) to show healthier ingredient choices.
- Study of how physical fitness and/or food choices are related to disease (such as: cancer, heart disease, osteoporosis, diabetes, etc.).
- Study of labels from similar food items, comparing important nutrient content like fat, fiber, and sugar.

- Explore nutrition-related careers

## Food Preservation

### Exhibit Suggestions

- Suggested exhibits include one (1) jar or one (1) bag of product:
  - Vegetables or fruits
  - Jams, jellies, preserves, low-sugar spreads (no frozen)
  - Pickled products (fermented or added acid, including pickles, sauerkraut, relishes, salsa).
  - Meats, poultry and/or fish. (Fish must be in pint jars.) Must be processed in a pressure canner.
    - Note: Preserved fish count toward the limit that can be in your possession.
  - Dried vegetables or dried fruits.
  - Dried herbs.
  - Beef or venison jerky.
- Learn about cottage food producer requirements in Minnesota
- Display about different methods of freezing foods
- Explore commercially available freezer bags to see which produces the best quality
- Display about preserving foods that you've hunted and/or caught
- Research different methods for harvesting and preserving butchered meat
- Make a poster about making freezer jams/jellies
- Research illnesses you can get from improper food preservation
- Teach others about safe canning methods
- Display about canning equipment and its purpose
- Learn about preserving foods in a pressure canner
- Compare current food preservation techniques with those used in the past

### Requirements

- Consult the authorities (University of Minnesota Extension/other state Extension publications, USDA, National Center for Home Food Preservation) and follow the recommendations for the year (or closest to) for all recipes, procedures, and processing times. Recipes from pectin packages, etc. are acceptable.
- All food preservation exhibits must be labeled or have a note card that includes county, name, grade, product, style of pack, processing method (boiling water bath or pressure canner), date, processing time, date processed and source of recipe. Pressure canned items indicate dial or weighted gauge and how many pounds of pressure are used.
- Jars must be heat-tempered clear glass canning jars, not commercial glass jars (i.e. glass mayonnaise jars).
- All jars must be sealed. Jellies and jams must be covered with lids.
- Use pint jars for fruit, vegetables, and fish; one-half pint jars for jams and jellies; 2- 1 pint jars or one quart jar for pickled products.
- No artificial food coloring should be added to entries.
- Dried foods may be stored in glass jars, self-sealing plastic bags or airtight plastic bags. The quantity of dried foods should be: fruits and vegetables 1/2 cup or more of each, herbs - 1/4 cup of each in whole leaf form, 3 strips of meat (i.e. venison or beef jerky).
- Foods must be preserved within the past year.

## Food Revue

### County fair display requirement

- Binder included in the requirements section No food items should be brought along for display at the fair.

### Exhibit suggestions

- Exhibitors may bring to the county showcase experience: one item of food from the menu; a place setting which includes dishes, silverware, linens and centerpiece for the course in which food is served.

#### Requirement

- The display must be no larger than 30" square.
- Food Revue will be judged on food and nutritional knowledge, menu design/theme, table setting design, and cost information.
- Must include binder, which includes: Cover page, menu, cost, nutritional information, picture of place setting, picture of food, and one or more pictures of you in action preparing your meal.
- Note: the judge may or may not taste the food

For more information on 4-H Food Revue, please reference the [Carlton County 4-H Food Revue Guide](#).



## Global Connections

### Project Description

Lessons on Global Citizenship are as close by as your local grocery store, library, highway or high school and can be as far away as places like Oslo, Nairobi or Hong Kong! Share what you've learned about exploring countries and learning about their government, history, people and popular cultures. It also allows you to further explore your own culture and traditions. This includes ways you have made a difference in your community and your world with a Global Connections project.

### Exhibit Suggestions

- Make a poster exploring your own culture. What are the important elements of your culture and how is it different from other cultures?
- Make a display of coins, stamps or postcards from other countries. How are they used? What is the meaning of the images on them?
- Record an oral history interview with someone from another culture living in your community.
- Service learning: Teach English to non-native English speaking people. What did you learn from doing this?
- Make a collection of foreign recipes and prepare them for others. Consider Hmong or Somali cuisine, or that of another Minnesota group.
- Prepare an exhibit of items, pictures, maps, charts, slides/tapes, drawings, illustrations, writings or displays that depict the heritage of the member's family or community or 4-H history.
- Prepare a display illustrating what you have learned about a country's or U.S. region's geography, economy, agriculture, people, language, housing, culture, music, crafts, clothing, holidays or other aspects.
- Pick a country to study, then look up which one of the fifty U.S. states has a similar population to that country. Create a presentation documenting the similarities and differences between the identified country and the state based on the following topics:
  - Climate and weather
  - Culture and traditions
  - Food and cuisine
  - Language



## Health & Wellness

## Exhibit Suggestions

- Research and report on a health issue of your choice.
- Report on a community service project that you conducted or volunteered with that relates to a health issue or addresses a community need.
  - Include objectives, audience, timetable, program description, materials, community support and evaluation. Examples might include food distribution centers, homeless shelters, vaccine clinics, blood drives, community run/walk events such as a 5K.
  - Share the results of a service project you conducted in your community to address a health-related need.
  - Make a personal connection with an organization or group working to address health disparities or health inequities in your community (for example, availability and access to safe and affordable housing)
- Conduct a community health assessment for your county, tribe, city or school. What are they doing well to support people's wellbeing? What challenges have arisen? What solutions are they offering to support the community? What will you do now that you have this information?
- Research resources that are available to you in your community. Does this provide information useful to you or your peer group? What did you learn and do with the information?
- Organize a peer support group, conference, a seminar, a workshop, or a chemical-free party. What is your goal in creating this group?
- Promote health through campaigns, activities, and events centered on specific health issues.
  - Create a health day/week at school or arrange a health topic at your 4-H club meeting.
  - In collaboration with others (school, peers, etc.) develop an "anti-bullying" campaign to address Social Media Health
- Create a Day in the Life Timeline to identify how you spend your day -
  - Where can you set goals to include more healthy practices such as mindfulness, fitness, movement, more fruits or vegetables, etc.?
  - Share some ways you incorporate self-care and/or mindfulness practices into your daily routines.
  - How do you manage schedules/Stress Management?
  - What steps do you take to ensure you are nourishing your body throughout the day?
- Create a video or musical production addressing a cause that's connected to health and wellness.
- Design a model of the human skeleton and label the bones or learn about other organs and systems of the human body
- How does fitness, motion, or athletics fit into a healthy lifestyle for you
- Careers in the health science industry



## Home Environment

### Exhibit Suggestions

- Finished or refinished item, or reupholstered furniture with before and after photos.
- Repaired, restored, remodeled or upcycled item for the home.
- An article remade or reclaimed for the home with a link to the past, including history of use.
- Description, diagrams/photos, samples and cost of a redecorating or remodeling plan showing before and after.
- Item creation for the home - for appeal or for practical use.
- Home organization and functionality (i.e. make a spice rack).
- Environmentally friendly home improvements; assess energy efficiency.

## Requirements

- Members exhibiting in this project should be prepared to discuss how their exhibit applies to the home, how and where it is used or displayed, and all details of how it was made or selected.
  - They should know about the subject matter of the specific exhibit, the materials used, how and why it was done, costs involved, and alternatives considered
- A photograph and details showing its place in the home environment must accompany exhibits that are items for the home.
- Pictures and wall hangings that are exhibited should be finished.
  - Purchased kits are allowed to be used.



## Horticulture

### Flower Gardening

#### Exhibit Suggestions

- When exhibiting cut flowers, we suggest:
  - three stems of one variety of annual flowers, or
  - one stem of a hardy perennial, or
  - one stem of summer flowering bulbs, or
  - one blossom of a tea rose, or
  - one stem of a hardy shrub rose.
- Flower bouquet or arrangement on any theme.
- Display of dried flowers with a card explaining the drying method.
- My Flower Garden - Exhibit on poster board, not to exceed 22 x 28". Include a plan of the garden drawn to scale, the correct variety name and pictures (or photographs) of the flowers grown. Be prepared to discuss the process from soil preparation to blooming.
- Educational Exhibit showing the principles of propagation or reproduction, nutrition, culture and physiology (how a plant lives and grows).
- A display using a 4-H project kit showing how plants or vegetables absorb color and change their leaf color.

## Requirements

- Label each container according to kind or variety.
- Outdoor living flowers and plants are to be exhibited in this area (including Outdoor Fairy Gardens)
- Live plant material will be accepted if it can be maintained in a fresh condition with ease.

### Indoor Gardening

#### Exhibit Suggestions

- Two or more varieties of house plants with common and botanical names.
- Terrarium or dish garden: consider terrarium material of general terrarium plant of native and woodland plants of Minnesota.
- Educational exhibit showing plant propagation, plant history, forcing bulbs, life cycle of a flowering plant, etc.

## Requirements

- Indoor living flowers and plants are to be exhibited in this area (including Indoor Fairy Gardens)

- Potted Plants:
  - Flowering plants should be in bloom.
  - Foliage plants should be in vigorous condition.
  - Plants should be grown in the exhibited container for at least one month prior to fair.
- Plants In Hanging Containers:
  - Container for the plant should not be more than 10" in depth or diameter.
  - Maximum total length of hanger and plant should not exceed 4'
  - Evaluation will include appropriateness of plant for a hanging container, condition, arrangement, hanger to container to plant relationship, and plants being well established.
- Terrariums:
  - The terrarium may not exceed 24" in any dimension.
  - Terrarium should be planted four to six weeks ahead of exhibiting.
  - Members must be able to identify all plant materials in their terrariums and know why they were selected for use (quality, container and design).
- Fairy Garden:
  - Must include at least two types of live plants
  - Gardens can be in an indoor container or outdoor display with clear labeling of plant species
  - Exhibits may include a brief written description (maximum 100 words) explaining the theme or story of the garden
  - Plants should be grown in the exhibit container for at least one month before the fair

## Landscape Design

### Exhibit Suggestions

- A 3D model of a landscaping design (24x36 inches)
- A binder detailing the exhibit with photos, design, budget, key explaining certain pieces in the design, etc..
- A colored design of the layout with colors. Adding explanation of why certain colored plants and what they add to the design.
- Using a computer and designing landscaping, garden area or new treeline development.
- A display about turf management of golf courses vs baseball fields and why certain types of grasses are used.
- Types of turf grasses for home use.
- Creating a landscape project for a nursing home, hospital or other places with people in care. Using plants or bird feeders for patient comfort.
- Discussion options of either annual or perennial plants used.
- Pollinator gardens

### Requirements

- Include a design (paper or 3D model)
- Itemization of supplies, plants, trees, grasses, rocks, bricks, pavers, gates/fences, structures, and other materials used in the design
- A budget
- If multi-year, describe the yearly benchmarks.
- Identify software or computer programs used.
- Mentions elements of landscape design such as: Balance, Focalization, Simplicity, Rhythm and Line, Proportion, and Unity.



## Industrial Technology

### Metal Work

#### Exhibit Suggestions

- Metal work is the creation of metal structures by cutting, bending and assembling processes. It is a value-added process involving the creation of machines, parts, and structures from various raw materials. Could also include a display on properties, uses, or processing of metals
- It is encouraged that youth provide a binder or supporting documentation about the work on the project - pictures of the process, statement of materials purchased or tools utilized etc.

#### Requirements

- Please contact 4-H staff if your project is an oversized exhibit.

### Woodworking

#### Exhibit Suggestions

- Woodworking is the skill of making items from wood (or wood substitute/alternative product), and could include cabinet making (cabinetry and furniture), wood carving, joinery, carpentry, woodturning or other wood manipulation techniques. Could also include a display on properties, uses, or processing of wood or wood alternatives.
- It is encouraged that youth provide a binder or supporting documentation about the work on the project - pictures of the process, statement of materials purchased or tools utilized etc.

#### Requirements

- Please contact 4-H staff if your project is an oversized exhibit.



## Mechanical Science

#### Project Description

Includes (but not limited to) automotive, implement, heavy equipment, recreation vehicle, small engine, tractor, electric, type of projects. Includes past projects of Electric, Small Engines and Tractor.

#### Exhibit Suggestions

An exhibit focusing on any mechanical science area such as (but not limited to) automotive, implement, heavy equipment, machine, recreation vehicle, small engine, tractor, electric:

- An educational display of some aspect of a machine or a piece of equipment use, operation, modification, repair, care, reconditioning, etc.
- An educational display on the history, purpose, technology or design of a machine or a piece of equipment.
- Engine that has been reconditioned or repaired.
- A device constructed by a member utilizing a powersource.
- Restoration of an engine, vehicle, tractor, machine or implement (body work and/or mechanical)
- Modification of an engine, vehicle, tractor, machine or implement
- If bringing an engine, vehicle, tractor, machine or implement as a project, consider including a binder or display outlining your project process from research to project completion.
- Diagram of wiring in your home/farm showing switch locations, fuse boxes, wire size, capacities, fuse sizes, total bulk wattage, appliance wattage, number of circuits, and type of wiring installation.
- Explore careers in this project area and explain why they interest you

## Requirements

- Motorized projects must adhere to safe building and operating design.
- Check space and transportation requirements for large exhibits with your local Extension Educator. Large exhibits may be displayed outdoors
- Fuel must be removed from exhibits for display (fuel can be added for judging purposes, but then removed after judging for safety purposes).
- A colored wiring diagram or schematic must accompany all electric and electronic exhibits. Safety must be reviewed when working with electricity.



## Natural Resources

## Entomology

### Exhibit Suggestions

- Projects can include but is not limited to life history displays (e.g. insect life cycle, honey production process, etc), scientific investigation (e.g. insect habitats or effects of environment factors on insects), insects in current events (e.g. pollinators, butterfly tagging, invasive species, protected or declining species), insects in our ecosystem (food source, roles in food production, behaviors, health or disease, etc)
- Live projects (e.g. bee or ant colony)
- Utilize the scientific method to learn about insects. Remember to introduce the subject, describing the process (materials and method), predicting an outcome, stating the results, and discussing any conclusions. Get involved and share what you learned through citizen science projects.
- Collections- cases can be purchased through a variety of vendors or homemade.
  - Specialty insect collection can include but is not limited to a collection of a single order (e.g. Coleoptera or Lepidoptera), a collection of immature insects, a collection of insects from a particular habitat (e.g. aquatic, forest, or prairie) or a collection of economic pests of a specific crop (e.g. insects attacking corn).
  - General collection- starter collection should have 10-20 insects, goal is to get to 50 species of adult insects representing at least 8 orders. Each year add or replace insects. A full 50 species case would be approximately 19" x 16.5" x 3" to 24" x 18" x 3".

### Requirement

- Emphasis of the project must relate to an aspect of entomology. Project must demonstrate specific knowledge of insects. Be prepared to discuss references and sources (e.g. books, magazines, internet, interviews with an expert etc.)
- Displays or booklets on entomology topics should include references and sources. Pictures, drawings, charts, tables, or other figures may be used to support understanding.
- Live projects (e.g. bee or ant colony) will be accepted if the project can be self-sustaining for up to 14 days without special care. A written report or journal should accompany the project. Pictures, drawings, charts, tables, or other figures may be used.
- Collection shall be contained in one see through enclosed case. Arrange so that the case may be displayed in a horizontal position. Place the project label on the lower right corner of the top.
  - Specimens must be collected by the exhibitor. Purchased insects are not acceptable.

- Specimens must be properly pinned with insect pins. Small insects may need to be placed on cardboard points.
- Specimens must be properly labeled.
  - The location, date, and collector must be included on the labels. County and state (and country, when applicable) are minimum location information that should be included. It is valuable to include the nearest town or township where the specimen was collected, the type of habitat it was collected from (e.g. on elm tree; on lake shore; indoors.), and the common name of the insect.
  - All labels should be visible so they can be read. Use a permanent ink marker, pencil or print labels from a computer.

## Exploring the Environment/Environmental Science

### Project Description

Share what you've learned about the relationships and interactions of plants, animals, humans, and their ecosystems through the specific challenges they face and/or solutions they offer.

### Exhibit Suggestions

- Display or create a video about environmental challenges, such as climate change, pollution, erosion, etc., describing the causes and their sources, its effect on people and other living things, and potential solutions. This could include news clippings and other media about an environmental issue that you care about.
- Phenology journals used to keep track of environmental changes throughout a season.
- Display showcasing your participation in an event such as a BioBlitz or naturalist program, or other citizen science project to collect data and/or raise awareness.
- Complete a community map or assessment, to observe environmental needs and community assets.
- Vlog detailing hiking, camping, paddling, backyard, and other explorations/adventures
- A display or journal of Minnesota plants, insects, animals, birds or fish. Include pictures or drawings and information on habits, foods, and shelter needs.
- Collection of wildflowers growing near where you live or a place you visit.
- Experiments related to local environmental engineering and/or technology applications: such as urban design, pocket prairies, roadside management, eco-friendly buildings, etc.
- Pros and cons regarding a specific piece of environmental policy and/or management.
- Choose one living thing in the forest, field or stream and make a display to describe its ecosystem and/or the flow of energy throughout the ecosystem.
- Investigate an invasive, threatened, or extinct species in your area. Where do invasive species come from and is it considered invasive in its native area? What threatens them and what can be done about it? Why do species go extinct and as that happened in the area where you live?

### Requirement

- Follow local or state policies for collecting, removing and/or transporting plants and other organisms

## Forest Resources

### Exhibit Suggestions

- Identify the parts of a tree and what they do with a poster or collection of leaves, seeds, needles, etc.
- Display showing tree growth; annual ring cross-sections; make a seed collection.
- Prepare a report with drawings about your favorite tree--include name of tree, drawings or pictures of tree, facts and uses of the tree, and other appropriate information.
- Display showing layers of the forest; renewable versus non-renewable resources; forestry careers; leaf and twig identification; taxonomic keys; nutrient road maps.

- Display on forest ecosystem health such as succession; tree and forest measurements; fire's effect on the forest; how trees grow; forest types; harvesting methods; pathology of the forest, invasive species, human impacts on the forest.
- Photographic display or report on forest products or industries, including maple syrup production; wood products; Christmas trees or others (recreation, wildlife, etc.).
- Display on woodland management such as policies created by the U.S. Forest Service or specialized design including shelterbelts/windbreaks and urban forestry.
- A video or display about the human health benefits from trees, and what role trees play in global ecology.
- Organize or take part in a mass tree planting and calculate the amount of carbon that will be offset
- Explore the history of forestry through the lens of indigenous practices or the effects of treaties. How have these relationships impacted people and landscapes?

#### **Requirement**

- Please follow local or state policies for collecting, removing and/or transporting plants and other organisms
- Specimens should be mounted on cardboard or other sturdy material.

## **Geology**

#### **Exhibit Suggestions**

- Display of rocks, minerals, gemstones, a rock plate; can be displayed in an egg carton for younger youth, or in a display case as youth progresses in the project; include in the display, labels of specimen name and location collected.
- Rocks, minerals, or fossils from within Minnesota or on a definite theme such as metamorphism, weathering, quartz minerals, ores, or a theme of your own choosing.
- Polished rock specimen; include an unpolished specimen of each rock type for comparison.
- Educational exhibit showing the "science how's and why's" dealing with the principles of geology and natural earth sciences.
- Exhibits explaining the three main rock types (Igneous, Metamorphic, Sedimentary) include examples of each.
- Model of a geologic earth structure or feature such as volcano, mountain range, plate tectonics, earthquake, cave, glacier.
- Timeline of geological time scale.

## **Water Resources**

#### **Exhibit Suggestions**

- Demonstrate water's unique chemical/physical properties, such as how heat and salt affect water density or how a wetland ecosystem changes throughout the seasons
- Project showing how water is necessary for life, such as a display on water/wetland ecosystem services like filtration or nutrient cycles from plants
- Share how water connects earth systems like a poster displaying your local water cycle or watershed
- Research your local water body's thermoclines or nutrient cycles
- Display on how water is used by people, such as:
  - A record tracking your family's water footprint at home, or
  - A model showing stormwater runoff, or
  - A map showcasing water accessibility or insecurity in a specific region of the world
- Exhibit detailing water/wetland resource management measures like erosion control practices, and terraces, or a map of local, regional, state, or global water bodies and water quality.

#### **Requirement**

- Follow local or state policies for collecting, removing and/or transporting plants and other organisms



## Needle Arts

### Exhibit Suggestions

- Any item made by the member using the techniques of knitting, crocheting, embroidery and crewel, counted cross stitch, needlepoint, hardanger, weaving, appliqué, latch hook, tatting, hand embellishments, felting, hand embroidery.
- Consumer Product Analysis: Comparison and evaluation of materials, supplies, or accessories used for a needle arts technique.
- Poster or display showing how needlework product is or could be priced, advertised and marketed.
- Poster or display comparing different techniques of a particular needle art (ex. different felting techniques, different stitches).
- Poster or display showing how to care for your project supplies (ex. storing, organizing, cleaning).
- Historical/Cultural Study: Story, poster, or display about a needle arts heirloom from your family or local history museum. Exhibits must include information about how items should be preserved.

### Requirements

- This project area is for projects created using a hand needle, hook, shuttle or loom.
- Each exhibit must include a consumer information tag, if appropriate, with the following information: pattern name and source, fiber content, and care instructions.
- Exhibitors should be prepared to discuss techniques, fiber content, care instructions, and cost. Exhibitors are encouraged to bring instructions, patterns, or other educational sources used.
- Projects must be finished and ready to display. If an item is framed, a wall hanging, or to be displayed on a wall, it should be finished and ready to hang.
- Project kits are acceptable in this project area. The project must meet all other requirements.



## Performing Arts

### Exhibit Suggestions

- An educational display on some aspect of music, drama, dance, or performing.
- A journal or scrapbook (with written statements) of current performing arts experiences.
- A written piece such as poetry, sheet music, or other physical artifact intended for performance created by members.

### Requirements

- Exhibit can be either a performance or an exhibit that shows a member's involvement or interest in the performing arts.
- Performing Arts entries will be judged based on the criteria identified below and on an individual basis, even in group performances.
- An exhibitor may submit entries in both performance and non-performance based classes (e.g. a member may perform a puppet show that they wrote as a performance based exhibit and submit the script as a non-performance based exhibit)

## Performance Based

### Exhibit Suggestions

- Perform a short story, show scene, music selection, dance, monologue, poetry, etc.

### Requirements

- A performance in music, dance, drama, etc.
- A performance cannot last longer than 5 minutes.
- Performances may be given as a solo, duet, or a small group.
- Performances may include a non-judged accompanist
- Acts must be appropriate for any age audience
- To be eligible for State Fair, the member must be able to discuss the process of selecting, planning, performing and reflecting on their project work.
- The technique and artistry of the performance will be considered.

## Non-performance Based

### Exhibit Suggestions

- An educational display on some aspect of music, drama, dance, or performing.
- A journal or scrapbook (with written statements) of current performing arts experiences.
- A written piece such as poetry, sheet music, or other physical artifact intended for performance created by members.

### Requirements

- An exhibit such as a poster or display that shows a member's involvement or interest in the performing arts.
- To be eligible for State Fair, the member must be able to discuss the process of selecting, planning, creating and reflecting on their project work.
- The workmanship, general appearance and technique used to develop the exhibit will be considered.



## Pets

### Cats

#### Exhibit Suggestions

- Educational display explaining cat care, health, nutritional needs, etc.

### Dogs

#### Exhibit Suggestions

- Educational display explaining dog diseases, breeding, training, caring for dogs at humane society, information about therapy dogs, etc.

## Show Your Pet

- Pets must be under the exhibitor's control at all times (on a leash, in a crate/cage/aquarium, etc.). Cats included here and dogs may be entered in Show your Pet if not in the Dog Show.



## Photography

### Requirements for BOTH Elements of Photography and Photo Manipulation:

- All photos exhibited must have been taken/produced/enhanced by the exhibitor during the current year
- The exhibitor's name, club, county and exhibit class should be clearly printed on the back of the exhibit.
- Unaltered 4"x6" photos must be attached to the back of any exhibit
- For safety, picture frames or glass are not allowed
- Exhibits with multiple photos should use 4"x6" prints -multiple photos should be displayed on a board (see below for board information)
- Enlarged photos should be 5"x7" or 8"x10"
- Photos should be mounted on a mat board, foam board, or poster board using neutral colors (white, tan, gray or black). Do not use construction paper, cardstock, colored paper or wrapping paper. Photos should not be mounted on any type of flexible/bendable paper.
- Use a 14" x 22" board for 5 or more photos in an exhibit. Cut smaller boards for enlargements
- Exhibits should reflect the appropriate size for the item designed, e.g. the photos used for an ornament, a calendar, a poster, or brochure would require different sized photographs.
- Learn how to prepare your photos for the fair
  - Video Tutorial [z.umn.edu/4HPhotoPrepVideo](https://www.umn.edu/4HPhotoPrepVideo)
  - Slideshow Tutorial [z.umn.edu/4HPhotoPrepSlideshow](https://www.umn.edu/4HPhotoPrepSlideshow)

## Equipment

Use any device capable of capturing a photographic image to be printed: digital or film camera, cell phone, tablet or drone. A computer, phone or tablet is required for photo manipulation.

Please note: Supervision of the drone operator is important until they understand not only how to use a drone but also understand the etiquette and rules for using the drone. For information see: <https://www.faa.gov/uas> (unmanned aircraft systems)

Photo/Video Release Form - Use this form when including any person in your video that is NOT in 4-H. This verifies that the subject has agreed to have their photograph taken. Keep this signed form in a file. Here is a link to the [Photo & Video Release](#) form in [English](#), [Spanish](#), [Hmong](#) and [Somali](#).

This [presentation](#) explains what the difference is between elements and manipulation, software options and information on how to talk to a judge.

[State Fair photos, examples of Photo Manipulation](#)

## Elements Of Photography

This exhibit will focus on what makes a good photograph (composition, light, shutter speed, color, depth of field, leading lines, etc). Only select whole image edits or modifications are allowed in post-production. Post-production is any adjustment made after the photo is taken using editing software. Allowed whole image edits must be applied to the entire image and not specific areas of the photo. Allowed whole image edits include:

- cropping
- exposure correction
- color saturation
- contrast
- sharpening
- conversion to black & white

On-camera filters: a physical filter that attaches to the camera lens (neutral density, polarizer, various colors, etc) are allowed.

### Exhibit Suggestions

1. Photo Story:
  - a. Show a town's history or a family history. This could include photos of historic buildings, old photos copied from the historical society or library, family or individual portraits, etc.
  - b. Develop a documentary of another of yours or a friend's 4-H project or of your 4-H club's community service project
  - c. Document environmental issues such as the plight of pollinators, pollution, soil erosion, or the steps taken to improve the environment
  - d. Present a day in the life of – farm or city youth, a local professional person such as a school nurse or a firefighter, law enforcement office, or other interesting personality
  - e. Exhibit a series of photos on how to make or do something
2. Common Theme or subject:
  - a. Display a series of 3 to 7 photos of a common subject such as people, buildings, landscapes, animals, seasons, action, nature, weather, close-ups, etc.
3. Showcase a Photographic Elements:
  - a. Display a series of 5 to 7 photos that illustrate some photographic element such as composition, lighting, shutter speeds, depth of field, color, contrast, cropping, etc.
4. Panorama:
  - a. Show a single image created in camera or a triptych (set of 3 photos intended to be used together) of several images created by moving the camera. A triptych may consist of separate images that are variants on a theme, or may be one larger image split into three.

## Photo Manipulation

This exhibit will focus on using photography to show creatively edited photos and how photography is used in everyday life. Software editing is required for this category and may include:

- layering
- all digital filters (except black and white)
- creative coloring
- removing or adding objects
- text additions
- etc.

Entries in this category must involve editing with software such as Photoshop, Lightroom, IPhoto, Picasa, Gimp, Picmonkey, Pixi, Microsoft Publisher, etc.

Suggested softwares (all can be used on Android, iPhone, and iPad): Snapseed (easy to use and does a nice job), Adobe Photoshop Express (good option for those wanting to grow into Photoshop), Pixir (2nd to 6th grades only), PicsArt Photo Studio (powerful photo and video editing app)

Please view the "[Introduction to Photo Manipulation](#)" slideshow for specific examples and explanations.

Stock photos are not allowed. A stock photo is a photo taken by another person (not yourself) who has licensed their photo for specific uses by others. All images used in photo manipulation exhibits must have been taken by the exhibitor. Examples of images not allowed include: an image of space (taken by NASA) as the background of your photo or if you want a shark inserted into your composite image, you must take a photo of a shark.

#### **Exhibit Suggestions:**

1. Composite Photo: Multiple images combined into one image
  - a. Panoramas (overlapping areas of several photos and stitching them together in post-production)
  - b. the same person in multiple places within the photo
  - c. replacing the sky
2. Single Source Image Manipulation
  - a. acne removal, eye enhancement, teeth whitening, etc.
  - b. selective color manipulations (i.e. converting everything to black and white except items that are the same color red)
  - c. apply digital filters (other than black and white)
  - d. removing distractions in the background, etc.
3. Photo Series:
  - a. Make a series of 5 to 7 digitally edited photos that illustrate a common theme such as environmental issues, plight of pollinators, how to do something, etc.
4. Enlarged Photo:
  - a. Show a 5"x 7" or 8" x 10" print that has been digitally enhanced and illustrates software skills. An unaltered 4 x 6" print must be attached to the back of the exhibit.
5. Publications:
  - a. Show calendars, brochures, posters that are created using computer software
6. Photo Novelties:
  - a. Display mugs, puzzles, blankets, or other media on which photos have been printed
7. Slide Show:
  - a. Make a compilation of photos with titles, voice-over or background music. For judging, exhibitors can show their exhibit on a 14" x 22" poster board, computer or tablet.



## **Plant Science**

### **AGRICULTURAL TECHNOLOGY**

#### **Exhibit Suggestions:**

- A display or presentation highlighting the technology used in agriculture such as GPS tools, drone use, implement technology, yield mapping, genetic engineering, seed traits, agricultural chemistry, precision agriculture, on-farm research, side-by-side trials, etc.
- A drone showcase explaining precision agriculture

- A display demonstrating automated tractors

## **CORN**

### **Exhibit Suggestions:**

- A jar or clear container (equalling 8 cups) of shelled corn.
- A display of ears of dent corn, consisting of 6-10 ears of corn of the same variety.
- A bundle of corn stalks, consisting of stalks of the same variety.
- An educational display illustrating corn's plant reproduction, different types of corn, plant growth factors, plant characteristics, plant part identification, growing and using plants, plant growth and food production, examples of a plant disease, etc.
- A display using a 4-H project kit (a corn stalk growing out of a five-gallon pail).
- Tallest Stalk of Field Corn

### **Requirements:**

- Crop must be grown on a farm with which you have a relationship with the producer and have interviewed the producer about the growing process. Crops must have been grown in the current or previous growing season.
- Include an information card listing the variety, soil, and agronomy information of the crop if the exhibit is a crop sample.
- Be familiar with crop input costs and the growing process.

## **FORAGES**

### **Exhibit Suggestions:**

- A dried sample, in a 3-5 inch tied, dried bundle, clear container of ensiled forages or in a sample 4-6 inch slab of a bale of forage. Forages include alfalfa, warm-season grasses, cool-season grasses, sorghum, native grasses, silage, etc. It is recommended that a sample analysis of your forage accompanies the sample.
- An educational display illustrating one of the following ideas: nutritional analysis of feedstuff, plant reproduction, plant growth factors, plant characteristics, growing and using plants, plant growth and food production, examples of a plant disease, etc. of forages.
- A display using a 4-H project kit (grass grown in a container showing how forages are grown).

### **Requirements:**

- Crop must be grown on a farm with which you have a relationship with the producer and have interviewed the producer about the growing process. Crops must have been grown in the current or previous growing season.
- Include an information card listing the variety if the exhibit is a crop sample.
- The sample could be in a clear plastic container or a large clear plastic bag.
- Be familiar with crop input costs and the growing process.

## **PLANT AND SOIL SCIENCE**

### **Exhibit Suggestions:**

- Take soil samples and compare soil analysis (soil analysis can be done by obtaining kits at your local Extension Office).
- An exhibit showing different varieties of cover crops, etc. (seed or plant)
- A plant life cycle exhibit highlighting the growth of a plant from seed to a mature plant.
- A display using a 4-H project kit

## **SMALL GRAIN**

### **Exhibit Suggestions:**

- A jar or clear container (equalling 8 cups) of any small grain variety. This could include wheat, oats, rye, barley, etc.
- A dried sample, in a 3-5 inch tied, dried bundle of the same variety.

- An educational display illustrating one of the following ideas: plant reproduction, plant growth factors, plant characteristics, usage of plants, plant growth, food production, examples of a plant disease, etc. of small grain.

**Requirements:**

- Crop must be grown on a farm with which you have a relationship with the producer and have interviewed the producer about the growing process. Crops must have been grown in the current or previous growing season.
- Include an information card listing the variety if the exhibit is a crop sample.
- Be familiar with crop input costs and the growing process.

## **SOYBEANS**

**Exhibit Suggestions:**

- A jar or clear container (equalling 8 cups) of soybeans.
- A dried sample, in a 3-5 inch tied, dried bundle of the same variety.
- An educational display illustrating plant reproduction, plant growth factors, plant characteristics, usage of plants or seeds, plant growth and food production, and examples of a plant disease, etc. of a soybean.
- A display using a 4-H project kit

**Requirements:**

- Crop must be grown on a farm with which you have a relationship with the producer and have interviewed the producer about the growing process. The crop must have been grown in the current or previous growing season.
- Include an information card listing the variety if the exhibit is a crop sample.
- Be familiar with crop input costs and the growing process.

## **SPECIALTY CROPS**

**Exhibit Suggestions:**

- An adequate sample of a specialty crop such as sugar beets, edible beans, black beans, kidney beans, field-produced sweet corn, peas, carrots, potatoes, popcorn, etc. Dried products should be in a jar or clear container (equalling 8 cups); fresh products on a plate or flat box.
- A dried sample, in a 3-5 inch tied, dried bundle of the same variety.
- An educational display illustrating one of the following ideas: plant reproduction, plant growth factors, plant characteristics, usage of plants, plant growth, food production, examples of a plant disease, etc. of a specialty crop.
- Tallest sunflower (bring an exhibit of your tallest sunflower stalk with a sunflower head on it).

**Requirements:**

- Crop must be grown on a farm with which you have a relationship with the producer and have interviewed the producer about the growing process. Crops must have been grown in the current or previous growing season.
- Include an information card listing the variety if the exhibit is a crop sample.
- Be familiar with crop input costs and the growing process.

## **WEEDS AND PEST**

**Exhibit Suggestions:**

- A display or presentation highlighting any current pests in agriculture or horticulture. Could include their life cycle, prevention or treatment, their impact on the plant, etc.
- A weed display or book identifying different weeds in agriculture or horticulture. Highlight one weed in-depth, a class of weeds (such as grasses or broad leaves) or a collection of different weeds. Could include identification details, life cycle, weed control, the impact on crop production, etc.

- A display, book or poster identifying insects that are harmful to crops or other plants.

\*Note: Do not include live or dried noxious weed samples in your display (check the current listing at <https://www.mda.state.mn.us/plants/pestmanagement/weedcontrol/noxiouslist.aspx>). If you are bringing in a sample of weed seeds, put it in a sealed container.



## Plastic Sculpture Challenge

This project was created to build awareness and knowledge of both the positive and negative impacts of single use plastics and ways to recycle or repurpose plastic. It is also meant to empower 4-H youth to be actively involved as change agents in reducing use of single-use plastics and increasing recycling/repurposing, for their family, their club, their community, their country and their world.

### Exhibit Suggestions:

- Suggested materials to attach items together: zip ties, string, rubber bands, art materials, colorful duct tape, or electrical tape. Strong adhesives (such as E6000 and Gorilla Glue) need to be used in a well-ventilated area with adult supervision. Safety note: melting plastic gives off toxic fumes. If using a glue gun, it is recommended to use a cool, "low temp" glue gun.
- Depending on the size and weight of your sculpture, you might consider adding wheels that lock in place or handles to your sculpture so it is easy to move.

### Requirements:

- Exhibits can be created by individual or teams.
- 4-H'ers of all ages are invited to explore the plastics issue and create an art sculpture with found plastics.
- If a base is needed, it should be made out of thin wood, plywood, fiberboard, or similar material.
- Sculptures can be any size with a maximum size of: 3 ft. wide x 3 ft. long x 6 ft. tall.
- Must be made of clean (washed) plastics
- Must be multidimensional. Sculptures can be free-standing or should be ready for hanging for display (e.g. wires or hooks for hanging, on a sturdy, movable base, etc.).
- If you are unsure about any of these Guidelines, please consult your 4-H Extension Educator.
- Sculptures must include an Artist Statement (50 words or less) with:
  - Name(s) of Artists
  - Title of your sculpture
  - A statement about what you created and why
  - What materials you used.
  - What you learned and how will it change your use of single-use plastics
  - How others can reduce their use of single-use plastics

Two exhibits will be selected for the State Fair. Note: State Fair Plastic Sculptures will be on display only. No judging will occur at the State Fair.

## POTATOES (See Vegetable, Fruit and Herb Gardening section)



## Quilting

### Project Description:

Quilting is the term given to the process of joining a minimum of three layers of fabric together either through stitching manually by hand using a needle and thread, or mechanically with a sewing machine or specialized longarm quilting system. (Wikipedia)

### Exhibit Suggestions:

- A quilted item, any finishing technique acceptable. Examples: potholder, table runner, doll quilt, bed-sized quilt
- Repair, repurposing, or re-design of a previously finished quilt. Example: an heirloom quilt with significant repairs or turned into another quilted item.
- A display on a quilting topic of your choice. Examples: the history of quilting/quilting patterns, a comparison of different fabrics or threads, different types of quilting notions and tools, piecing techniques.

### Requirements:

- Attach an index card which includes: pattern name and source, fiber content of fabric & batting, and care instructions.
- Finishing techniques may be machine quilted, hand quilted or hand tied. If not quilted or tied by the 4-H'er, the exhibitor must state who tied or hand/machine quilted the final project.
- Techniques used, size, and difficulty of the project should be based on the exhibitor's sewing/quilting experience level.



## Safety

### Exhibit Suggestions:

- A First Aid or Childcare Kit with explanations for the items you included.
- A Public Service Announcement and/or social media toolkit to promote a safety topic of your choice.
  - List tips for being safe when home alone, such as emergency numbers to call, safety while preparing snacks, keeping doors locked, etc.
  - Attend and report on a safety program such as farm/livestock/animal, fire, food, firearms, ATV, watercraft, wilderness/outdoor, traffic, bike, personal, online, sun/skincare or others.
  - Interview a safety professional and showcase their advice.

### Requirements:

- Abide by local, state and federal laws regarding your safety topic
- Please contact 4-H staff if your project is an oversized exhibit



## Science Inquiry

### Project Description

In this project area, 4-H youth build confidence in doing science by exploring questions and finding answers. They follow a step-by-step process (called Science Inquiry) to satisfy their curiosity, learning more about something they can observe or experience.

### Exhibit Suggestions:

- An exhibit you presented at a local science fair
- Video of you exploring the physical properties of slime using different materials/recipes to make slime
- Display different types of bird feeders you used to determine if there is a preferred bird feeder type in your backyard
- Powerpoint showing the different types of frogs you found in a pond as you investigated the difference in the frog species in the spring and the frog species in the summer
- Display showing the different types of treats and the data you collected as you explored how your dog responds to different treats during training
- Tri Fold display board showing the results of your investigation of different types of sunscreen to see their effects on UV beads
- Slide show illustrating different water filtration systems you tested and the results you analyzed to identify which one resulted in the cleanest water
- Display the rock candy created as a result of investigating how the concentration of sugar affects crystal growth

### Requirements:

- Include the question, issue, or happening being investigated
- Include description of how a science inquiry process was used to help understand the phenomenon being investigated or studied
- Explain each step followed during the science inquiry process.



## Self-Determined

### Project Description:

The Self-Determined project area is intended for those projects that might not fit within other categories and for those learning experiences that members select, plan, and manage on their own. It is distinct from learning experiences determined or guided by others (e.g. school work, club-determined projects). This is not a "catch-all" category but rather is focused on intentional self-directed learning. Members should be able to describe what they did, how they reflected on it, and how they applied what they learned.

### Exhibit Suggestions:

- A portfolio describing the selection, planning, and management of a service learning project and what the member learned during the experience.
- A trifold display made as part of a school assignment with the addition of an accompanying journal describing the process of developing the display and capturing reflection on learning during completion of the assignment
- A photo collage capturing the experiences and stages of development of an event planned and facilitated by the member either individually or as part of a team
- A video or digital blog capturing the "behind the scenes" work, reflection, and application of concepts done by an individual member while working as part of a team on a project or assignment
- A lego creation (not a kit) intended to include some deeper thinking and learning that is not encapsulated in any other project, requiring the exhibitor to create their own learning path.

### Requirements:

- A self-determined project will be judged primarily on the self-guided learning experience. While the artistry and craftsmanship of the exhibit itself will be considered, emphasis will be placed on the selection and identification of the self-guided learning experience and the ability of the member to convey the experience and what was

learned from it. If the member wishes to be judged on the exhibit's craftsmanship or artistry, the exhibit should be entered within the appropriate project area (e.g. a project in seed art should be submitted within Crafts and Fine Arts project area if looking to be judged on the quality of the final product and the process and learning associated with its assembly).

- Exhibits consisting of projects or assignments done for school or other organized learning environments must indicate how the member went above and beyond the requirements of the assignment/project and individualized the learning to meet their own goals and desired outcomes.
- Exhibits may be submitted by individuals or teams. A team may consist of not more than three (3) individuals. Team members will be judged collectively.
- To be eligible for State Fair, the member(s) must be able to discuss the process of selection, planning and management of a self-determined learning experience.



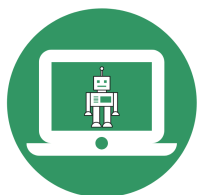
## Shooting Sports

### Exhibit Suggestions:

- Safety techniques applied to shooting activities (e.g., range commands and range safety, eye and ear protection, cleaning a firearm, dressing for safety-first aid, survival skills, etc.).
- Shooting Skills (e.g., basic safety rules, basic parts and functions of each piece of equipment, care and maintenance, accessories, position, etc.).
- Design and create shooting sports equipment (e.g., pellet stand, kneeling role, target stand, quiver, etc.)
- History and nomenclature of firearms.
- Sportsmanship: Ethical behavior and responsibility.

### Requirements:

- No explosive materials are allowed. Arrow tips or broadheads should be removed for display but may be included as part of the judging experience if secured for safety.
- Exhibits including firearms & bows must be sporting varieties only. Exhibitors must include a color photo of the item to be left on display - bows and firearms will not be left on display. The photograph should be taken prior to the county fair and attached to the display.
- MN and 4-H regulations for handling and storing firearms must be followed.



## Technology- Includes Aquatic Robotics, Computer, & Robotics exhibits

### Project Description:

Share what you've learned about computers, technology, using Aquatic Robotics and/or programming, and/or another type of robot or a robotics class or program..

### Exhibit Suggestions:

- Robot, ( Examples: Edison, EV3, WeDo, Osmos, VEX (or other types of robotics));( Have a photo of the robot if you do not intend to leave the robot on display)
- Display the robot using diagrams of programming, photos, booklets, etc
- Video of robot in action
- Exhibit an ROV (Remote Operated Vehicle); show the use in identifying Aquatic Invasive Species (AIS), and providing education

- Explain the foundations of computers and explore how computers work for various projects.
- Build a robot with labels describing how it works and/or accompanied with a binder of how it works
- Share software you created and how it works
- Learn about cyberbullying and explain prevention techniques
- Share about a robotics class you participated in and what you learned
- Create an educational app
- Explore careers in this project area and explain why they interest you
- Design computer hardware/software

**Requirements:**

- Include description, images/photos needed to assist with verbal or written description
- Description(s) can be verbal or written
- Computers, smartphones, tablets, ect. can be used during the judging process



## Vegetable, Fruit & Herb Gardening

### Fruit

**Exhibit Suggestions:**

- Fruit should be brought in an appropriate size clear container for displaying fruit.
- Display showing a comparison of several varieties of the same fruit (labeled); display using a branch to illustrate proper pruning of fruit trees and explaining the process; illustrate the many uses of fruits (fresh, jams, juices, cooking, baking, salads and recipes); illustrate the use of fruits as natural dyes.
- Educational display illustrating diseases (actual specimens) or insects (actual specimens) and methods of control.

**Requirements:**

- If displaying a fruit sample, the exhibitor should bring 4-6 items of one variety of fruit and include an information card listing the varieties of fruit.
- The exhibit must be produced at home or by a close relative. CANNOT BE STORE PURCHASED.

### Herb Gardening

**Exhibit Suggestions:**

- Educational display showing some aspect of raising or using herbs.
- A herb container garden planted in a tub, pot, or planter.
- A dried sample of herbs you have raised, harvested and dried (in an airtight container).
- A display using a 4-H project kit (growing a variety of herbs in a container).

### Potatoes

**Exhibit Suggestions:**

- Display a box (fruit crate size) or clear Rubbermaid container of potatoes that contains all the potatoes in that hill (all the potatoes one plant produced)
- Display a box (fruit crate size) or clear Rubbermaid container of 6-10 potatoes
- Educational display illustrating diseases and control, methods of mulching and reasons, causes and effects of sun-scald.

**Requirements:**

- If displaying a potato box (fruit crate size) or clear Rubbermaid container, you need 6-10 potatoes of the same variety or 2-3 varieties (this year's crop) similar in size to the variety identified on an information card.
- Be familiar with crop input costs and the growing process.
- The exhibit must be produced at home or by a close relative. CANNOT BE STORE PURCHASED.

## Vegetable Gardening Box

**Clarification:**

Vegetable Variety is either Large, Medium or Small

**Exhibit Suggestions:**

- A box (fruit crate size) or clear Rubbermaid container used to display vegetables.

**Requirements:**

- Label vegetables with proper variety names on an information card.
- When exhibiting a collection of vegetables, the collection should include six different kinds of vegetables (For example: 1 large variety + 3 medium varieties + 2 small varieties)
- 6 different vegetable specimens for this exhibit choosing any combination of the following:
  - One large vegetable specimen (cabbage, squash, melon, pumpkin, cauliflower, etc.)
  - Three different medium-sized vegetable specimens and 3 of each specimen (tomatoes, onions, peppers, cucumbers, kohlrabi, carrots, beets, turnips, etc.)
  - Two small vegetable specimens and 6-12 of each specimen (green beans, peas, lima beans, etc.)
- Potatoes may not be included (enter under the Potato project).
- The exhibit must be produced at home or by a close relative. CANNOT BE STORE PURCHASED.

## Vegetable Plate

**Clarification:**

Vegetable Variety is either Large, Medium or Small

**Exhibit Suggestions:**

- On a disposable plate, display an example of ONE vegetable variety.
- Examples of individual variety on a plate include:
  - Large-sized vegetable specimen: 1 sample (cabbage, squash, melon, pumpkin, cauliflower, etc.)
  - Medium-sized vegetable specimen: 3 of each specimen (tomatoes, potatoes, onions, peppers, cucumbers, kohlrabi, carrots, beets, turnips, asparagus, etc.)
  - Small-sized vegetable specimen: 6- 12 of each specimen (green beans, peas, cherry tomatoes, jalapenos, lima beans, etc.)

**Requirements:**

- Label vegetables with proper variety names on an information card.
- Only have one vegetable variety (Large, Medium or Small) on the plate. (For example: Variety is Medium sized - three onions).
- The exhibit must be produced at home or by a close relative. CANNOT BE STORE PURCHASED.

## Vegetable Container Garden exhibit

### Exhibit Suggestions:

- Showcase your gardening skills by growing a thriving vegetable container garden. This exhibit challenges 4-H'ers to design and maintain a productive garden in a container, perfect for small spaces.

### Requirements:

- Must include one type of vegetable grown in a container
- The container should be portable and have proper drainage
- Judges will assess plant health, variety selection, creativity in design, and overall presentation
- Exhibits may include a brief written description (maximum 100 words) detailing the plant choices, care methods, and any unique features of the garden
- Plants should be grown in the exhibit container for at least one month prior to the fair
- A themed herb garden with multiple plants would be accepted in this category

## Largest Vegetable

**Note:** This exhibit is not an optimal example of an edible vegetable. This is done for fun-growing purposes.

### Exhibit Suggestions:

- Squash
- Cabbage
- Pumpkin
- Melons

### Requirements:

- Include an information card with name, plant variety and date planted.
- The exhibit must be produced at home or by a close relative. CANNOT BE STORE PURCHASED.



## Veterinary Science

### Project Description:

Share what you've learned during an in-depth exploration around veterinary science topics.

### Exhibit Suggestions:

- An exhibit focused on technology or industry advancements in veterinary science
- An exhibit on diseases of animals focusing on the history, management, prevention, etc.
- An exhibit on use of different medications in veterinary science focusing on dosage, records, implications of use, impact on the industry
- An exhibit focused on surgical and nonsurgical procedures used in veterinary medicine (spaying/neutering pets, embryo transfer, wellness visit, etc.).
- An exhibit focused on careers in veterinary science exploration (such as job shadowing, interviews and opportunities)
- Create a 3-D model of the skeletal system of the animal of your choice



## Video/Filmmaking

### Video/Filmmaking

#### Video/Filmmaking – Production Team (2-3 members per team)

##### Requirements

- It is encouraged that when developing a 4-H video/filmmaking exhibit, members will develop skills beyond the classroom.
- It is recommended that the video/filmmaking exhibit be 3-5 minutes and no longer than 10 minutes.
- All video/filmmaking exhibits must be made by the exhibitor OR by a production team of which the exhibitor must be a member
- The exhibitor's name, grade, and club must be clearly printed on all exhibit pieces.
- All video/film footage exhibited must have been made/created DURING THE CURRENT 4-H YEAR. When appropriate, (i.e. historical sequences) older video clips can be used.
- The member should provide the video file even if sending it electronically.
- Video/film must be presented on DVD, flash drive, or CD. Participants are also allowed to upload their video to YouTube.
- Videos can also be delivered via Youtube, Vimeo, Frame.io or similar online based presentation sites.
- Video/film needs to be in presentation form, including a title and credits
- The video/film must be original material. Any video/film exhibit, which appears to contain copyrighted material, including music, will not be publicly displayed unless the exhibitor has written permission from the producer to use the material in the video/film. Portions and music from other sources must be documented and have a copyright release. Learn more about copyrighted material and finding material that is public domain or released under the Creative Commons license at [z.umn.edu.free4u](http://z.umn.edu/free4u).
- A computer must be brought for viewing the video/film during the conference judging, other arrangements need to be made in advance with the 4-H staff
- Video/film must be playable on Windows, use file format including .WMV, .FLV and .MPEG, .AVI, .MOV, .AVCHD, .MPEG-1, .MEG-4, as well as a playable DVD.
- 4-H videos must adhere to G or PG (parental guidance) standards. The 4-H Code of Conduct requires respectful behavior, so you may not depict: violence, obscene language (or naughty words) including swearing, rude interactions or insults, or use or visibility of guns or fighting, etc. Remember not only teens and pre-teens view the videos but young children and their parents. Keep this in mind when creating your video.

**Note:** This is not a slideshow (see Manipulated Photography for slideshow)

**Video Release form** -Use this form when including any person in your video that is NOT in 4-H This verifies that the subject has agreed to be in your video. Keep this signed form in a file. Here is a link to the [Photo & Video Release](#) form in [English](#), [Spanish](#), [Hmong](#) and [Somali](#).

**Equipment:** Any electronic device capable of capturing a video image video camera, digital camera, DSLR, time lapse camera or trail camera, cellphone, tablet, GoPro or drone with attached camera (operator must meet age requirements to use a drone).

**Note:** Supervision of the drone operator is important until they understand not only how to use a drone but also understand the etiquette and rules for using the drone. For information see: <https://www.faa.gov/uas> (unmanned aircraft systems)

**Exhibit Suggestions:**

- Showcase various video/film techniques
- A selected subject. Include a short storyboard or outline
- A poster that illustrates how a video/film camera works, or how to care for video/film equipment, illustration of computer video/film creation, etc.
- A video/film made by blending computer technology and traditional camera created video/film.
- A video/film using data from trail camera or time lapse camera (stop action video) or drone with attached camera (see note related to drone use).
- A video/film using Claymation, dolls, Lego for stop action
- Document environmental issues such as the plight of pollinators, pollution, soil erosion, or the steps taken to improve the environment
- A short documentary on a family member or interesting member of your community
- A trailer for a movie or event (can be fictional)
- A story that you tell using your friends and family
- A commercial, real or fictional



## Wildlife Biology & Management

**Project Description:**

Wildlife biology and management is about taking care of and protecting animals in their natural habitats to ensure their well-being and the balance of nature. Wildlife management is like being a guardian for animals and their homes. It's about making sure they have enough food, clean water, and safe places to live. Wildlife managers also help sick or injured animals and make sure there is a good balance in nature so all animals can thrive..

**Exhibit Suggestions;**

- Develop a wildlife management plan--show practices related to land use and forest management for wildlife such as controlled burns, logging, planting, etc.
- Explore basic concepts of Wildlife Management (waterfowl wingboards, birdhouse trails, carrying capacity, game animal habitat requirements, history of game management, etc).
- Explain some factors that threaten or endanger animal species such as urbanization, climate change, or habitat loss. Or explore a species that went extinct and why it happened.
- Build a bird or bat house, nesting structure, hibernaculum, animal shelter or feeder and explain the history of artificial shelter structures how it can benefit a species.
- Display a collection of identified wildlife scat (droppings), skulls or skins. How do they differ? Why?
- Show how wildlife can be classified into herbivores, carnivores or omnivores using skull diagrams
- Write a wildlife landscape habitat plan

- Report on animal adaptations, such as animal camouflage. How do adaptations of plants and animals match the environment they live in?
- Make a display that details a food chain/web of a particular habitat.
- Explain the life cycle of your favorite wild animal in a video, poster or display.
- Shadow or volunteer at a nature center or park and share your experience using a journal, video, or display. Learn about rules and policies in place to protect or manage certain species of wildlife.
- Identify, mount, and label a book of plants native to a certain region
- Make a display of animal signs, animal tracks, homes, or foods
- Do a bird study, including beak type, wings, feet, song, feeding patterns, etc.
- Make a collection of wildflowers growing near where you live or a place you visit

#### Requirements:

- All wild game used in exhibits must be tagged appropriately according to state laws.



## Youth Leadership

#### Project Description:

Youth Leadership is a project area that requires the member to discover their skills and then develop those skills and share them with others. This might happen individually or with a group.

Members exhibiting in this project should be prepared to discuss and/or have written information about what they learned about their ability to lead a project. Members should share how they've built an understanding of self, developed skills, learned how to work with others, overcome obstacles or adjusted goals, developed understanding of making decisions, and/or managed and or worked in groups.

#### Exhibit Suggestions:

- Share your youth leadership experience. This could include your 4-H youth leadership journey, or your leadership in an organization within your school or community.
- Share what you gained and shared from a conference or retreat you attended.
- Share a personal development plan you have implemented
- Develop a (career and/or college prep) portfolio
- Develop a presentation that illustrates how you've built understanding of self, developed communication skills, learned how to work with others, developed understanding of making decisions, and/or managing and/or working in groups.
- Lesson plan you've developed
- Meeting outline or agenda developed by youth
- Scrapbook outlining participation in leadership programs. Includes personal reflection on leadership growth and development.
- Share how you have taken the lead on a service project, and what leadership skills you gained through the project.
- Share how you have served as a mentor and/or teacher to younger youth (could be with a project area, a club activity or officer role, etc)



## Club Exhibits

**Club exhibits will be judged during General Judging on Tuesday, August 12th from 2:30 to 6pm.**

*Be sure to have all exhibits identified with your club name.*

## Banner

The club promotional banner serves as a tool to promote the local 4-H club and the county 4-H program and give 4-H'ers an opportunity for artistic expression through advertisement.

One banner is allowed per club to be displayed in the 4-H Building. It is the club's responsibility to pick up the exhibit tag, attach the exhibit tag, and hang the banner in the 4-H Building on entry day.

Two banners will be selected for the State Fair.

### Exhibit Suggestions

- Banners should have a theme and reflect/represent opportunities in the 4-H program. It should carry the message quickly and simply to the viewer.
- Banners can be 2-D or 3-D

### Requirement

- Banner must be 3' x 5' and designed to hang vertically.
- It must be completed and equipped with a dowel (minimum size 3' 8") and ready to hang.
- Banner must be of fabric (no paper) and can be one or two-sided.
- Club name on 3 x 5 card pinned to back. (Any assembly technique can be used.)

## Booth

### Requirements

- The booth should depict an area of work or program of current emphasis

## Community Pride

This is a project where a club displays ways in which they make their community better by being active citizens and act on the things they believe in.

Two exhibits will be selected for the State Fair.

### Exhibit Suggestions

- Organize an environmental cleanup
- Make or collect and distribute items where needed
- Read to younger kids at the library or school
- Service to nursing home or homeless populations
- Deliver safety education programs such as a bike rodeo or fire safety training

### Requirements

- The exhibit may include a three-sided display (not to exceed 12" deep x 24" wide x 36" high), video or other visual method which visually highlights the entire project or certain parts in a manner which tells the public what positive effects the project has on the community.
- Two club youth who participated in the project must represent the club in conference judging. Youth will explain the purpose of the project, steps in the planning, how the project meets the community needs and the impact it has.
- For State Fair, two club members, grades 6+ must be present for conference judging.

*Community Pride participants at the State Fair may exhibit another individual project.*

## Scrapbook

### Requirements

- Show and explain your club activities and participation in community and county events since last year's county fair
- Scrapbook should cover the current 4-H year, starting with October 1 up to the start of current year's fair entry day.
- Each 4-H club may enter one (1) scrapbook exhibit.
- Scrapbooks from previous years are not eligible.
- Scrapbooks may be a traditional scrapbook or a printed digital photo book.

## Plastic Sculpture Challenge (see Plastic Sculpture Challenge under General Projects)

Note: Plastic Sculptures can be created by individuals or teams



## Public Presentations

### Demonstrations (Individual or team)

### Presentations & Speeches (Individual or team)

### Livestock Demonstrations (Individual or team)

### Interactive Demonstrations (Individual or team)

#### Exhibit Suggestions

- **Demonstrations**
  - Teaching others a project or activity such as taekwondo, making lemonade, slime, macrame, etc.
- **Livestock Demonstrations**
  - See Animal Science section - pg. 38
- **Presentations & Speeches**
  - A report on leadership lessons learned through a trip to Washington DC
  - An educational presentation that explores sustainable energy options
  - A persuasive speech exploring Social Media effects on youth mental health.
- **Interactive Demonstrations**
  - An interactive presentation that teaches the public how to do something. For example, teaching the audience an origami project where they follow along with your demonstration step-by-step and create the project with you.

- An interactive yoga demonstration where you teach the audience various poses.

## Requirements

- Public Presentations may be related to any project that the member is enrolled in or to any area of interest or expertise the 4-H'er has. Presentations may be an individual or a two-person team.
- **Demonstrations** are an oral presentation that includes actually demonstrating the hands-on steps required to accomplish a task or process. This most often includes the use of physical objects and actual doing or showing. At the end of the demonstration, there should be something of a "finished product". Demonstrations may also include the use of supporting visuals like posters, charts or technology-based options like presentation software (i.e. MS PowerPoint, KeyNote, Google Slides). However, the focus of the Demonstration should be on the "doing", not the supporting visuals. Presentations may be an individual or team. Individual presentations shall not exceed 15 minutes in length and team presentations should not exceed 25 minutes in length.
- **Livestock Demonstrations** - See Animal Science section - pg. 44
- **Presentations & Speeches** are oral presentations that present an idea, concept, viewpoint or experience in an educational or informative format (not for entertainment or performative purposes). Presentations & Speeches often consist of interaction with supporting visual aids like posters, charts or technology-based options like presentation software (i.e. MS PowerPoint, KeyNote, Google Slides). Supporting visuals may include tangible items, but generally little or no activity takes place with the item. Presentations & Speeches may be an individual or team. Individual presentations shall not exceed 15 minutes in length and team presentations should not exceed 25 minutes in length.
- **Interactive Demonstrations** are oral presentations that are continuous and include hands-on audience interaction/participation. Adequate supplies should be provided by the presenters so that all present can participate in the activity. Interactive Demonstrations may be an individual or team. Interactive Demonstrations are approximately 25-30 minutes in length but for both individual or team. Involving the audience in the process is the primary focus of Interactive Demonstrations and constitutes a major portion of the evaluation results.
- NOTE: 4-H'ers who complete a Public Presentation at the State Fair will receive a \$30 cash award. These payments are made in October. 4-H'ers must be grade eligible to participate at the State Fair.

For more information on 4-H Demonstrations, please reference the [Carlton County 4-H Public Presentation Guide](#).

**Special Note:** If presentation software is utilized in either a demonstration or presentation & speech, the 4-H'er is responsible for securing any equipment necessary for judging. Extension staff may be able to assist in this process, but it is the responsibility of the exhibitor to contact Extension staff WELL BEFORE the scheduled judging.