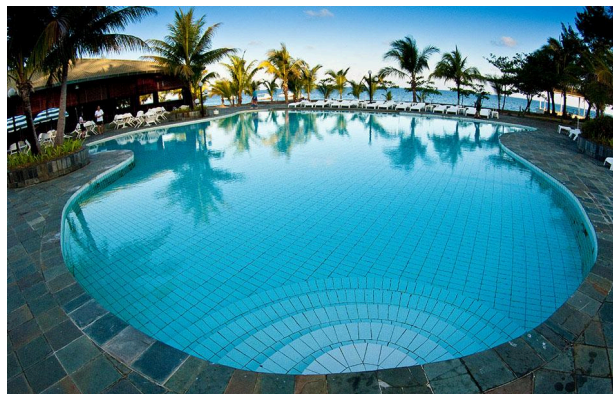
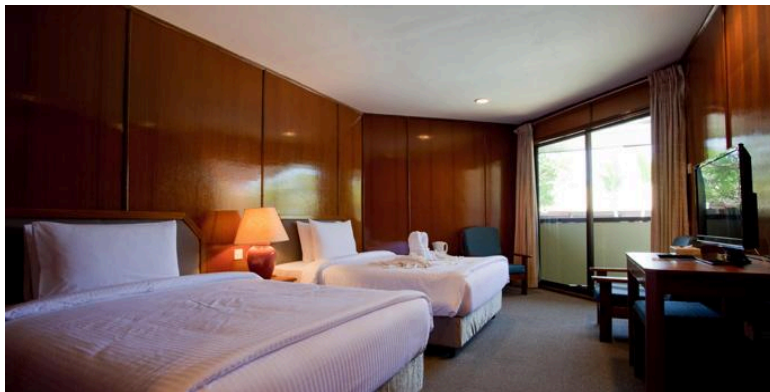


**Layang Layang Island - Avillion Resort - 6D5N (1N in KK) - 2019**





## **RECOMMENDATION :**

Minimum Level of Dive Certification:

SSI Advanced Adventurer or Deep Diving Speciality Equivalent

Dive Equipment Recommended:

Soft Gear

## **ITINERARY:**

### Day 1

- Arrive at Kota Kinabalu Airport and transfer to hotel by hotel representative
- Check in hotel. Free and easy for rest of the day
- Contact Layang Layang Island Resort staff on day of arrival in Kota Kinabalu to reconfirm flight timing to Layang Layang Island Resort

### Day 2

0420 Check out and transfer to Kota Kinabalu Airport

0445 Meet Layang Layang Island Resort representative at Airport Terminal 1

0530 Air transfer to Layang Layang Island Resort

0630 Arrive at Layang Layang Island Resort for orientation

- Up to 2 guided boat dives
- Breakfast, lunch and dinner at resort

### Day 3 - 4

- Up to 3 guided boat dives daily
- Breakfast, lunch and dinner at resort

### Day 5

- Up to 1 guided boat dive
- Free and easy for rest of the day,
- Breakfast, lunch and dinner at resort

### Day 6

0640 Breakfast

0710 Air transfer to Kota Kinabalu Airport

0810 Arrive Kota Kinabalu Airport

**\* Itinerary is subject to changes due to unforeseen circumstances**

## **PROPOSED FLIGHTS:**

### **1) Direct flight from Singapore to Kota Kinabalu via AirAsia**

*\* On your own expenses*

*\* All return connecting flights from Kota Kinabalu should be at least 5 hours upon arrival from Layang Layang.*

**AK 1792** Singapore (SIN) to Kota Kinabalu (BKI)

Depart: 1740 Arrive: 2005

**AK 1791** Kota Kinabalu (BKI) to Singapore (SIN)

Depart: 1445 Arrive: 1710

### **2) Domestic Flight from Kota Kinabalu to Layang Layang**

*\* Provided by Layang Layang Avillion Resort (Rates below)*

MH8900 Kota Kinabalu (BKI) to Layang Layang (LAC)

Depart: 0530 Arrive: 0630

MH 8901 Layang Layang (LAC) to Kota Kinabalu (BKI)

Depart: 0530 Arrive: 0630

**RATES :**

Deluxe AC Room	Travel Period	Leisure Diver (SGD)
Twin Sharing	<b>Non-Peak</b> (01 Feb - 31 Mar 2018, 08 May - 31 Aug 2018)	1579
Single Occupancy		2050
Twin Sharing	<b>Peak</b> (01 Apr - 07 May 2018)	1729
Single Occupancy		2230

**Resort & Room Details:**

Resort Facilities	Swimming Pool Snorkelling & Migratory Bird Sanctuary Asian & Continental Restaurant Bar - serving exotic cocktails and refreshing soft drinks Souvenir Shop Conference Room Dive Center Free WiFi
Room Amenities	Private Verandah Ensuite Bathroom with Rain Shower TV with ASTRO channels Air-conditioning Coffee & Tea Making Facilities Writing Desk IDD Telephone Guest Amenities (Towels, Soap)

**DIVE PACKAGE DETAILS**

INCLUDES	EXCLUDES
2 Way Land transfer between Kota Kinabalu Airport & Cititel Express Kota Kinabalu	Two way domestic flight transfer between Kota Kinabalu & Layang Layang (SGD640 per pax)
4N Full Board Accommodation at LYLY Avillion Resort	Return Airfare (Singapore & Kota Kinabalu)
1N Stay at Cititel Express Kota Kinabalu or equivalent	Dive Gear Rental
Up to 9 guided boat dives	Dive Travel Insurance
Unlimited jetty day dives	Transfer between airport and hotel in Kota Kinabalu
Weights and tanks	Meals at Kota Kinabalu during 1N stay

**PAYMENT TERMS:**

Amount	Timeline
50% Deposit	Upon confirmation of booking
Full Payment	Two months before trip

**CANCELLATION POLICY:**

Duration	Term
Less than three months before the trip	Full Payment will be non-refundable

Three months or more before the trip	50% deposit will be forfeited
--------------------------------------	-------------------------------

### **DIVE TRAVEL INSURANCE:**

DiveAssure have comprehensive insurance plans for diving and travel activities to cover you for a piece of mind.

For more details on insurance coverage & benefits, please check out the link or let us know if you have any questions.

- Dive Safe T&C  
<https://diveassure.com/wp-content/uploads/2016/07/DiveSafe-ROW-DOC-English.pdf>
- Dive&Travel T&C  
<https://diveassure.com/wp-content/uploads/2017/02/Standrd-Deluxe-Elite-LAR-DOC-2017.pdf>
- Other FAQs  
[https://diveassure.com/en-intl/forms\\_frequently-asked-questions/](https://diveassure.com/en-intl/forms_frequently-asked-questions/)

Duration	Policy Plans (SGD)		
	Dive & Travel	Dive & Travel PLUS*	Dive Safe
3 Days	57	72	42
7 Days	173	245	72
Annual	289	439	189

\*Liveaboard Coverage

### **Coverage Locations:**

Dive Safe - Local Diving

Dive & Travel - Worldwide Coverage except for Cuba

Dive & Travel PLUS - Worldwide Coverage except for Cuba

### **GEAR RENTAL RATE:**

*(To be paid directly to the dive operator)*

Item	Rates (MYR/Day)
BCD	50
Regulator	50
High Pressure Gauge Only	30
Low Pressure Gauge Only	20
Wetsuit (Shorty)	40
Mask, Snorkel, Fins Set	40
Mask & Snorkel Set	20
Fins Only	20
Dive Torch	50
Dive Computer	50