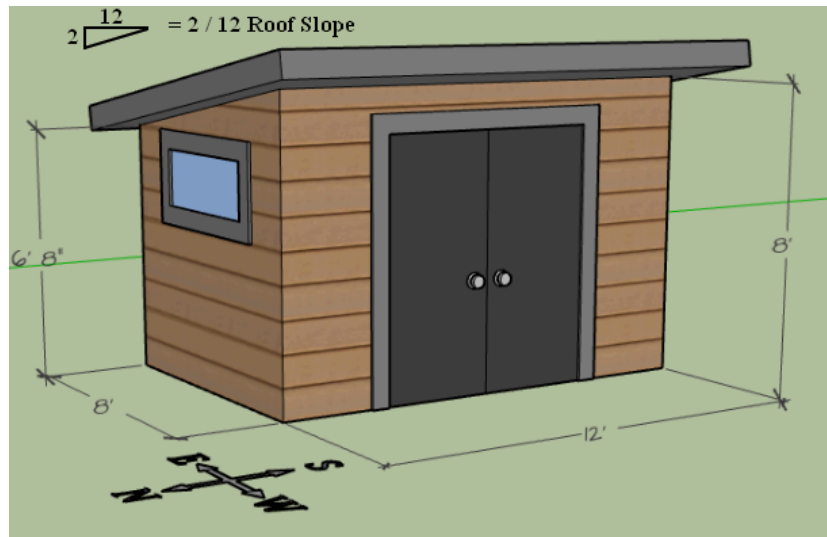
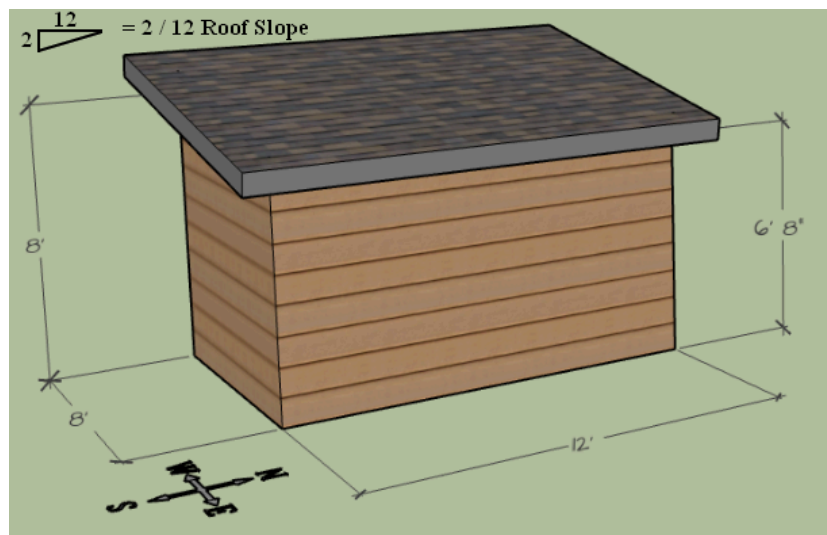


GARDEN SHED [12' x 8'] [RedXApps Web Based Framing Tool](#): How To Frame and Layout Exterior Walls + Materials List

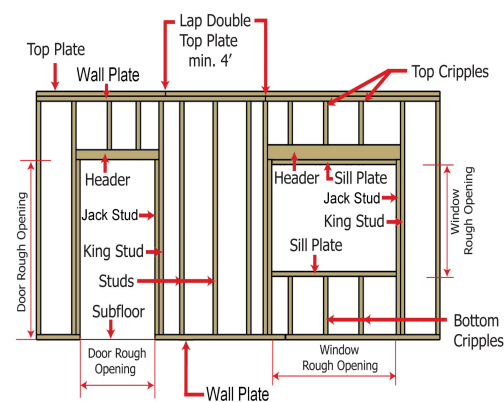
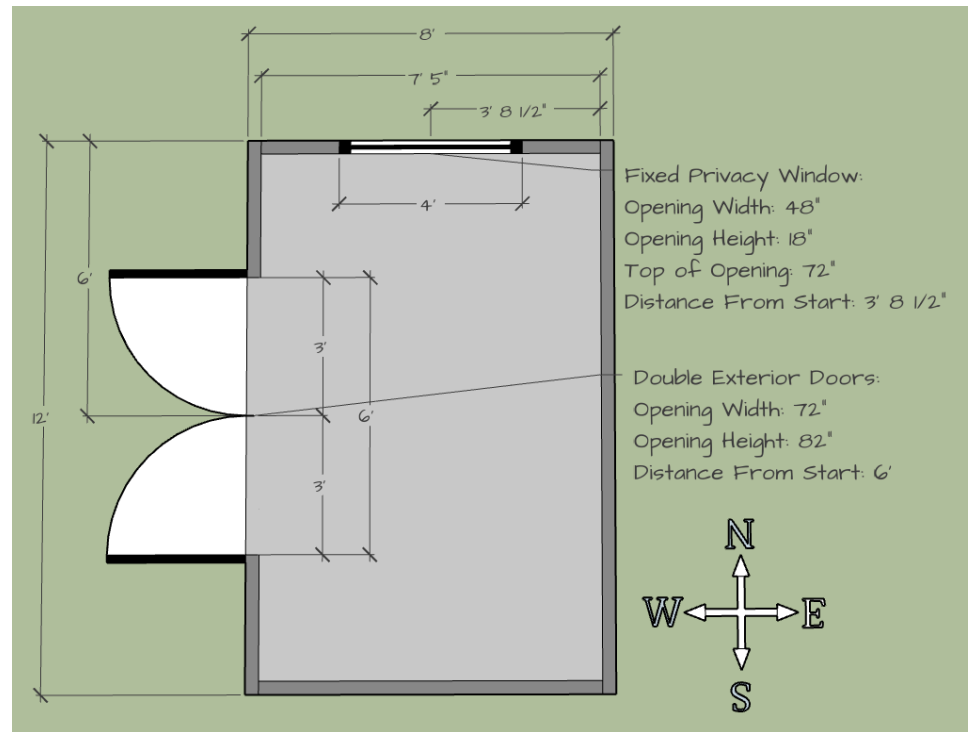
Front View



Back View



Floor Plan



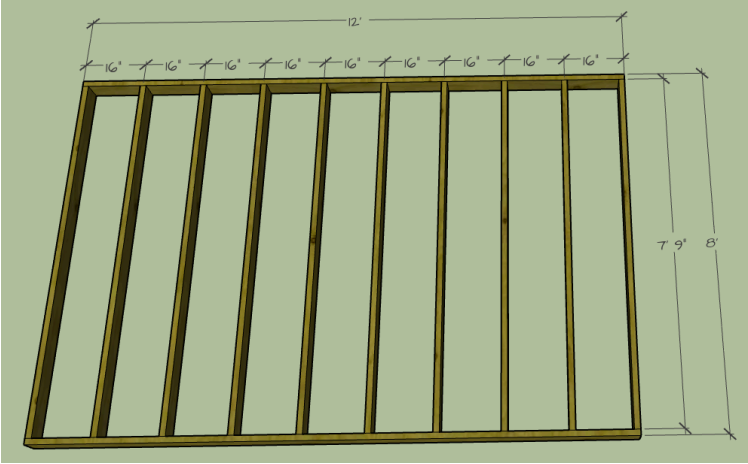
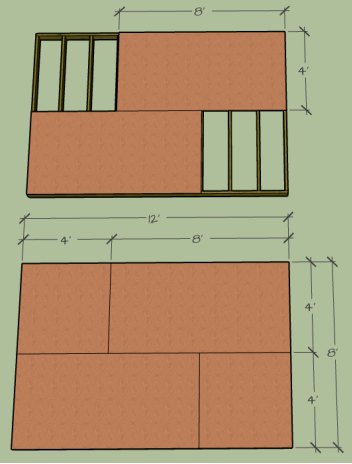
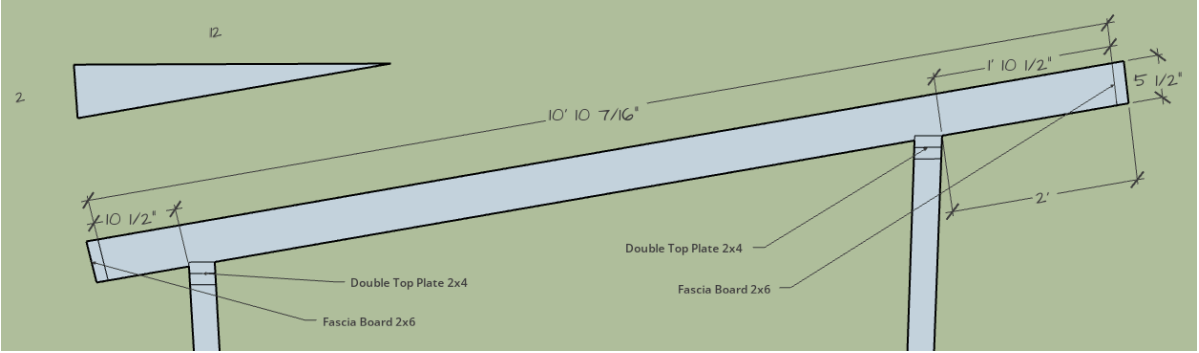
Framing Terms

Wall Plate = Top and Bottom of Wall
Top Plate = Laminated to Top Wall Plate

Studs = Common Full Height of Wall

Window And Door Framing

Jack Stud = Supports Header
King Stud = Laminated To Jack
Sill Plate = Top and Bottom
Header = Beam Above Door or Window
Cripples = Studs Above and Below Doors and Windows

Floor Framing: 16" O/C	Staggered Subfloor:	Material and Cutlist→ Insert Screen Shot
		
Roof Rafters 16" O/C with 2/12 Slope	Staggered	
		
		<p>Insert Screen Shot Here:</p> <p>Feet → Inches [Estimating Material Needed] Remember to round up to the nearest 2' increment</p> <p>8' = 96" 10' = 120" 12' = 144" 14' = 168" 16' = 192"</p>

	Size	Uses [Grouped]	Feet	Qty
	2x4	All Studs: Stud, Jack, King		
	2x4	All Cripple Stud: Calculate total inch → ft		
	2x4	All Plate: Wall, Upper Top Plate		
	2x4	All Sill Plate: Calculate total inch → ft		
	2x10	All Header: Calculate total inch → ft		
	4'x8'	Sheathing: Estimate Amount Needed		

Floor System:		
Top View:	Bottom View:	

Roof Rafters

HOW TO TAKE A SCREENSHOT WITH: CHROMEBOOK & DESKTOP: Window Key + Shift + S and then use Ctrl V → Paste

- Click and drag out a rectangular area on screen that you would like to use and click capture

[Example Of Framing / Sheathing / Material List / Cutlist](#)

East Standard Wall [Plain Wall] → Insert Screen Shot - Studs that are all the same height and matching flat top and bottom plates. It is rectangular in shape.		Material and Cutlist→ Insert Screen Shot	
Insert Screen Shot Here:		Insert Screen Shot Here:	
		Feet → Inches [Estimating Material Needed]	
		Remember to round up to the nearest 2' increment	
		8' = 96" 10' = 120" 12' = 144" 14' = 168" 16' = 192"	
		Size	Uses [Grouped]
		2x4	All Studs: Stud, Jack, King
		2x4	All Cripple Stud: Calculate total inch → ft
		2x4	All Plate: Wall, Upper Top Plate
		2x4	All Sill Plate: Calculate total inch → ft
		2x10	All Header: Calculate total inch → ft
		4'x8'	Sheathing: Estimate Amount Needed

--	--

West Standard Wall [Exterior Double Doors] → Insert Screen Shot <ul style="list-style-type: none"> - Studs that are all the same height and matching flat top and bottom plates. It is rectangular in shape. 	Cutlist and Sheathing → Insert Screen Shot

North Rake Wall [Fixed High Window] → Insert Screen Shot <ul style="list-style-type: none"> - Follows the slope of a roof, rather than being straight up and down like a standard wall. 	Material and Cutlist→ Insert Screen Shot

South Rake Wall [Plain Wall] → Insert Screen Shot - Follows the slope of a roof, rather than being straight up and down like a standard wall.	Material and Cutlist→ Insert Screen Shot

<i>Exterior — Doors, Windows & Garage Doors → Framing Rough Openings</i>				
Opening Type	Rough Opening Width	Rough Opening Height	Jack/Trimmer Studs	<i>Nominal “rule-of-thumb” values — always verify with manufacturer specs & local building code.</i>
Entry Door (36")	+1"	+2"	1 per side	
Window Under 48"	+1"	+1"	1 per side	
Window Over 49"	+2"	+2"	2 per side	
8' Garage Door	-2"	-2"	2 per side	

