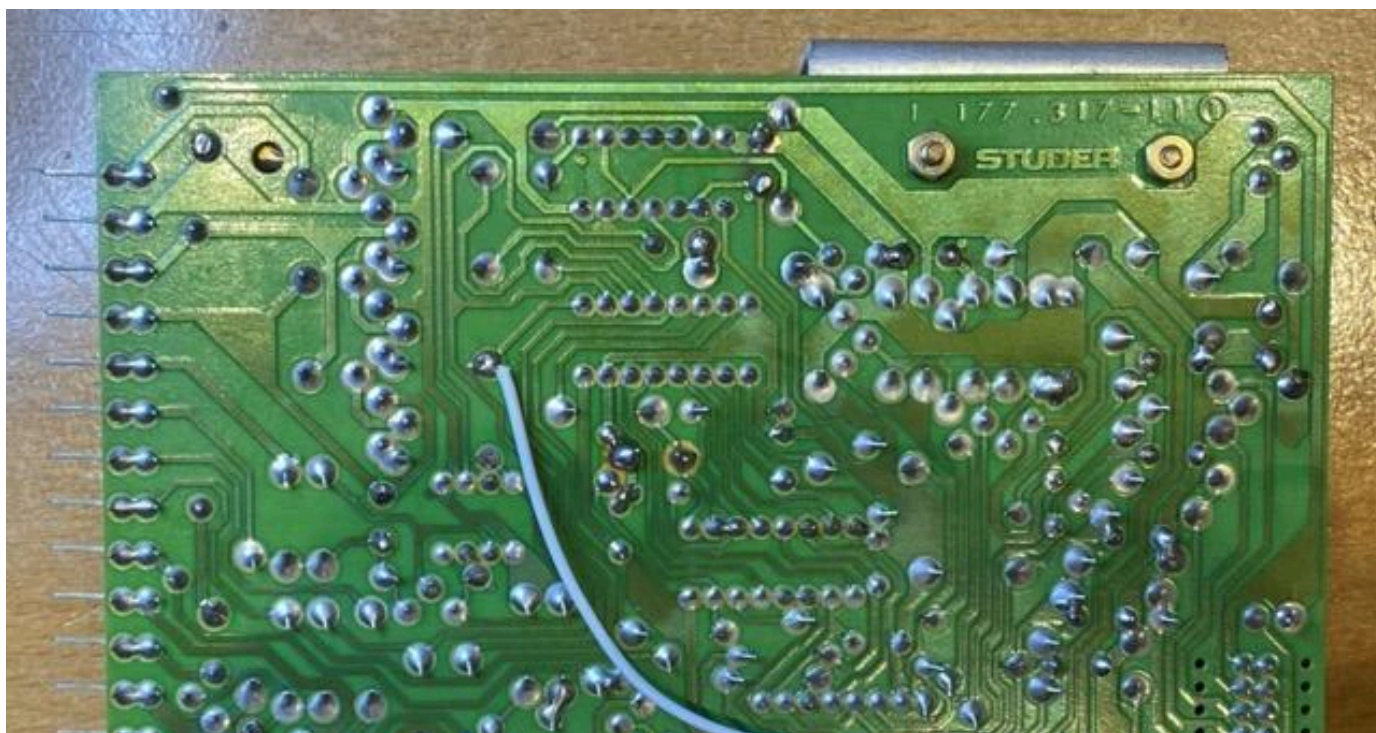


# Revox Counter Installation Instructions (B77 MkII)



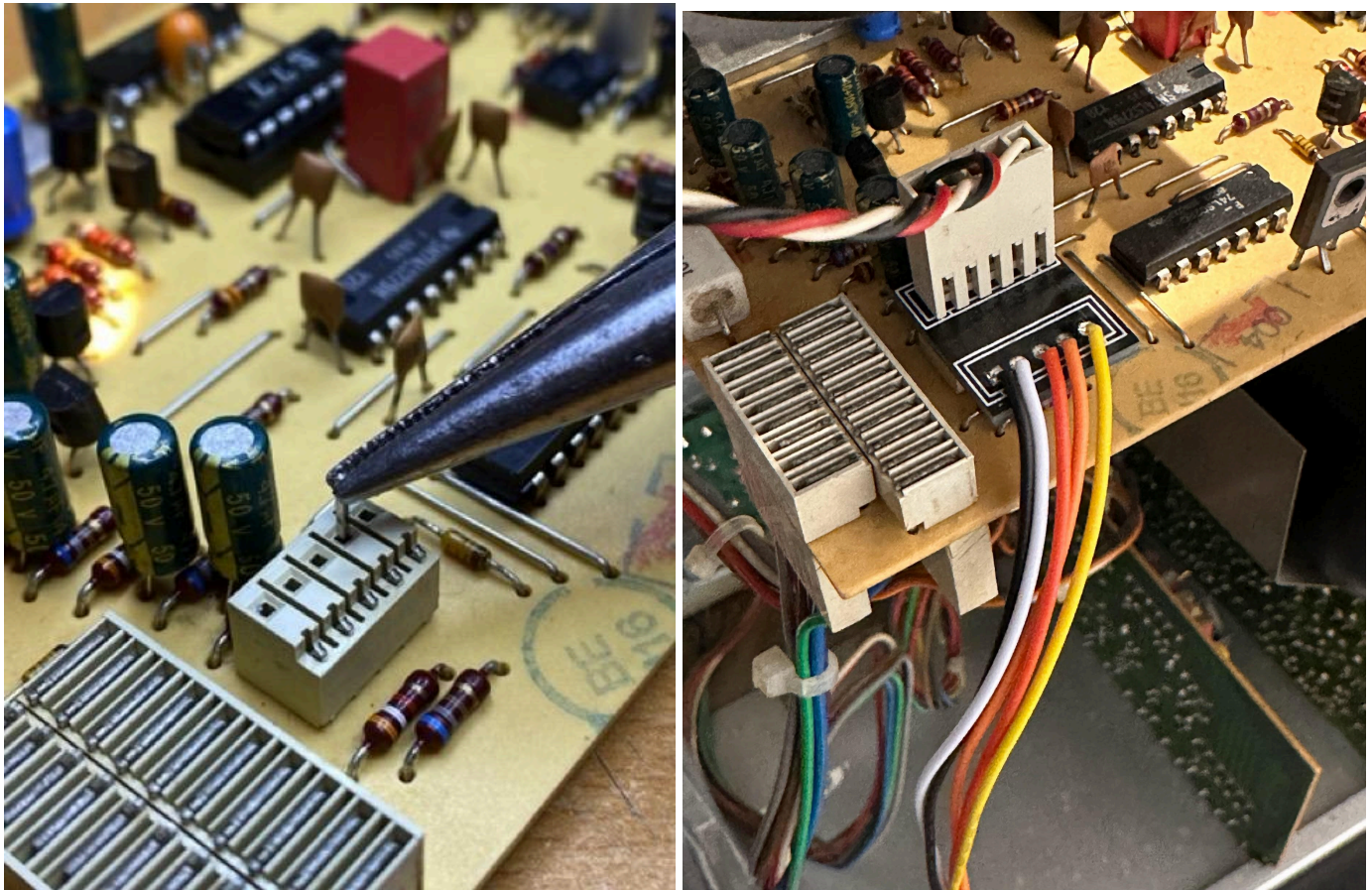
To install the counter tape drive, front and back covers need to be removed first. Then you need to remove the tape control board. Loosen the screw holding the board to the chassis a few turns to the left, but do not remove it completely. The heatsink and the hole board should be able to slide to the left now.

Disconnect two connectors on top, disconnect two connectors below, and then pull the board out. Solder the jumper wire like in the picture. This is the connection to the direction pin.

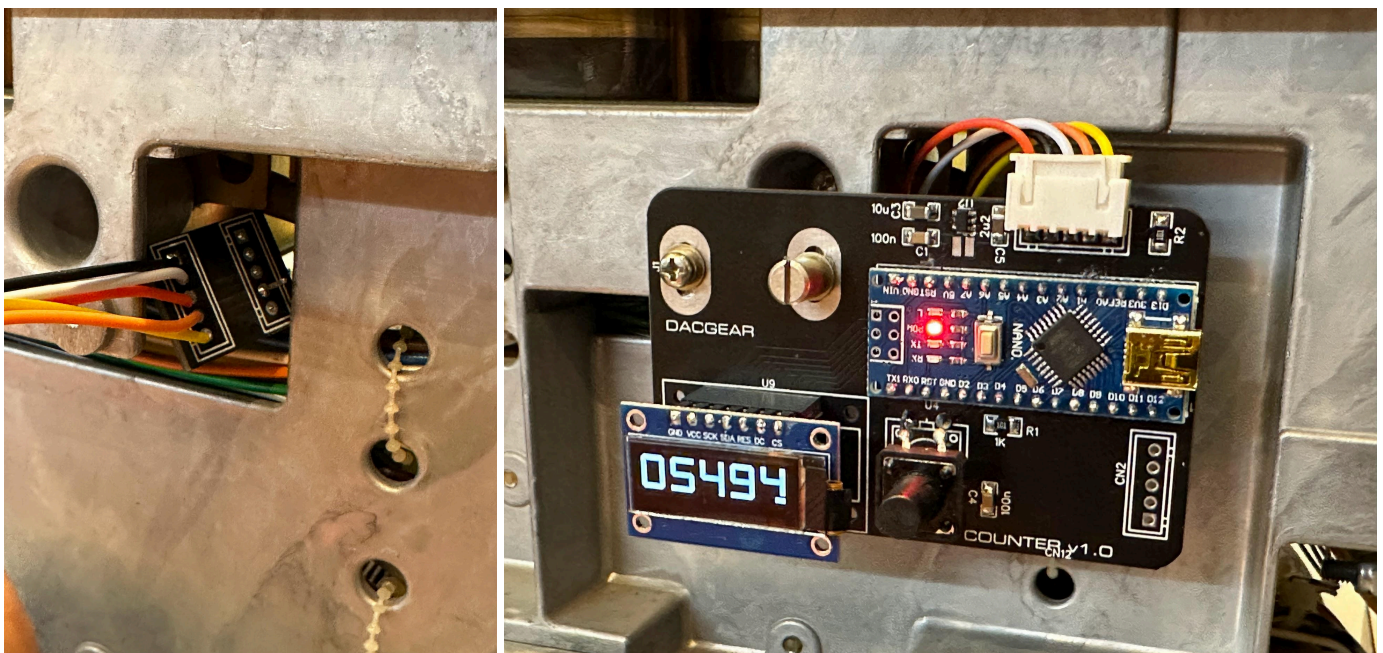




Pull out the pin that sticks out of the connector. This is the pin that is not connected but will be used for direction sensing, and this where the jumper wire connects to underneath. Assemble the connector like in the photo below, making sure that connector pin enters the same position as the original pin that was removed.

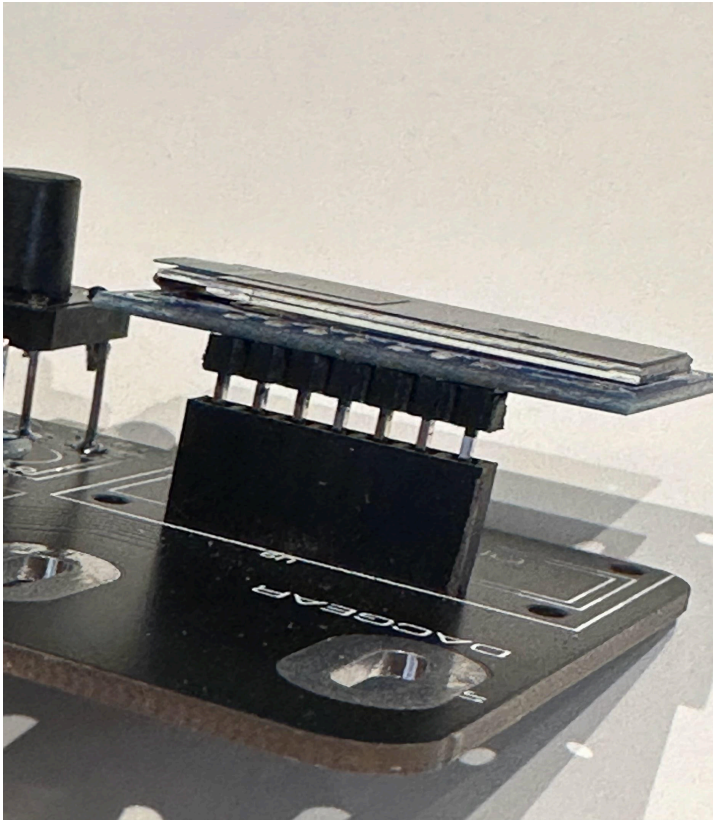


Remove the old counter and all the belts. Install the new counter in its place using the same screws. Route cables through the hole behind the counter and all the way back to the tape drive control board. Make sure it's aligned well so that the reset button doesn't jam. Test it with a plastic cover on and at least two screws screwed in. It might take several attempts to get it right. You might need to move the button in the correct position gently by bending its pins to align it with the hole. Button should not jam and must click easily.





If the display is a bit away from the front panel hole, you can simply pull it out of the socket a few millimetres until it's touching the panel:



That should be it, enjoy your new counter!

To change modes, press and hold the button. Default mode is 4+1 digits with direction animation.