

## Sunset4All

DATA from SWITERS Jan 2012 to Dec 2021 (10 years)

Fountain / Sunset to Sunset / Echo Park

### Total Crashes

801

### Total Victims 1051

9 Killed & 1,042 Injured

### State Highway

3 (0.4%)

### Ped Crashes

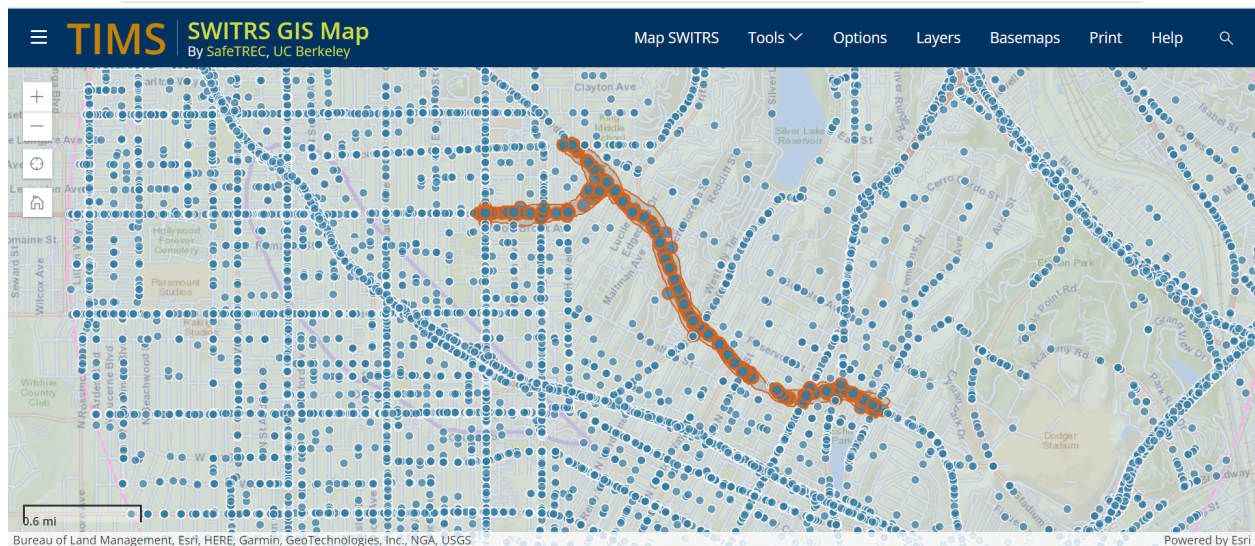
154 (19.2%)

### Bike Crashes

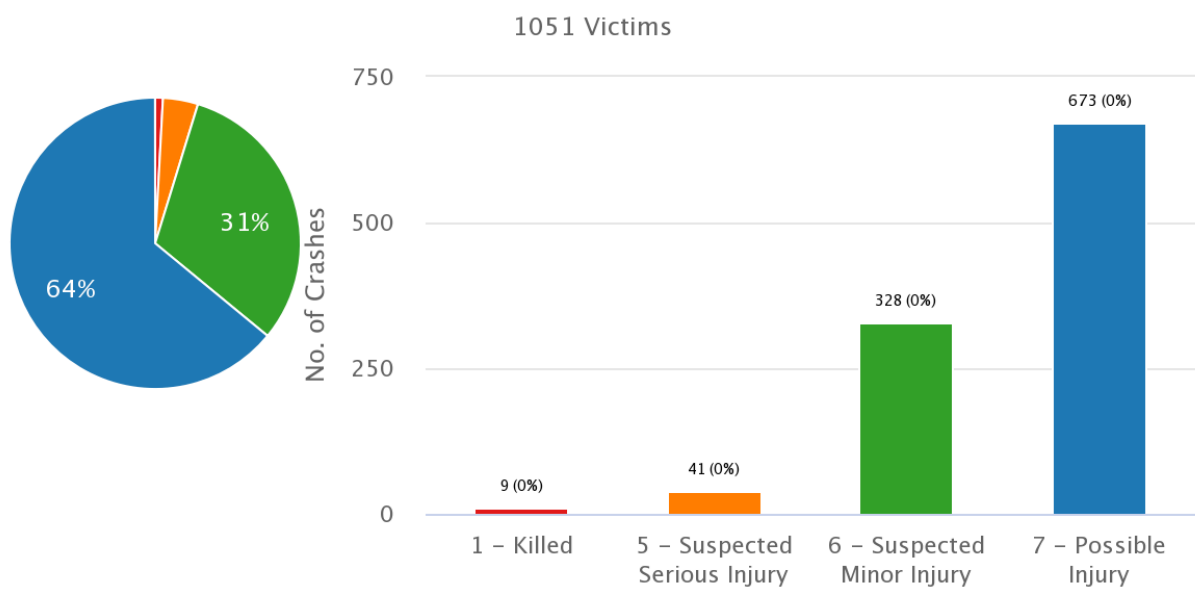
159 (19.9%)

### Motorcycle Crashes

75 (9.4%)



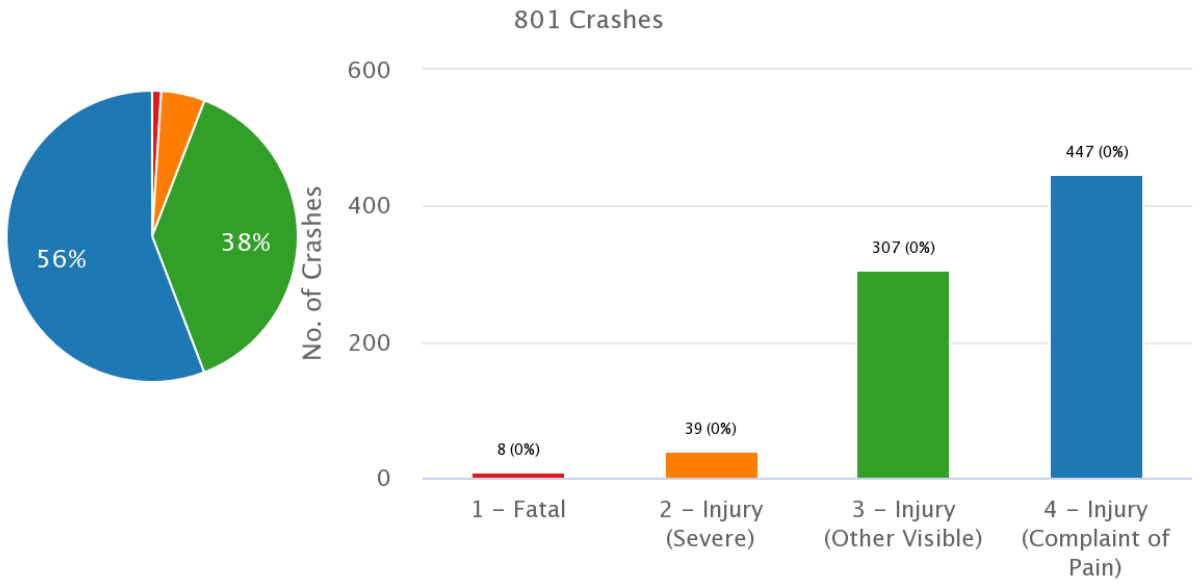
# Number of Victims by Victim Degree of Injury



## Victim Degree of Injury

- 1 - Killed
- 5 - Suspected Serious Injury
- 6 - Suspected Minor Injury
- 7 - Possible Injury

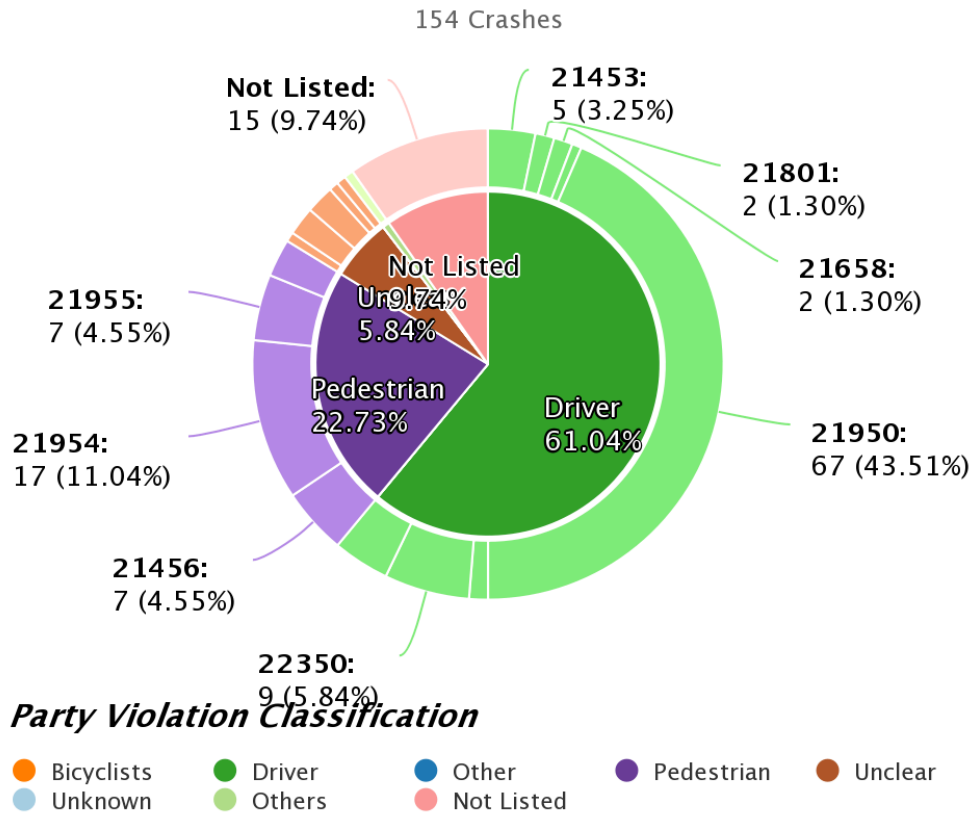
## Number of Crashes by Crash Severity



### ***Crash Severity***

- 1 - Fatal
- 2 - Injury (Severe)
- 3 - Injury (Other Visible)
- 4 - Injury (Complaint of Pain)

## Number of Crashes by Type of Violation



## Sunset Blvd / Echo Park to Union Station

### Total Crashes

482

### Total Victims 707

6 Killed & 701 Injured

### State Highway

15 (3.1%)

### Ped Crashes

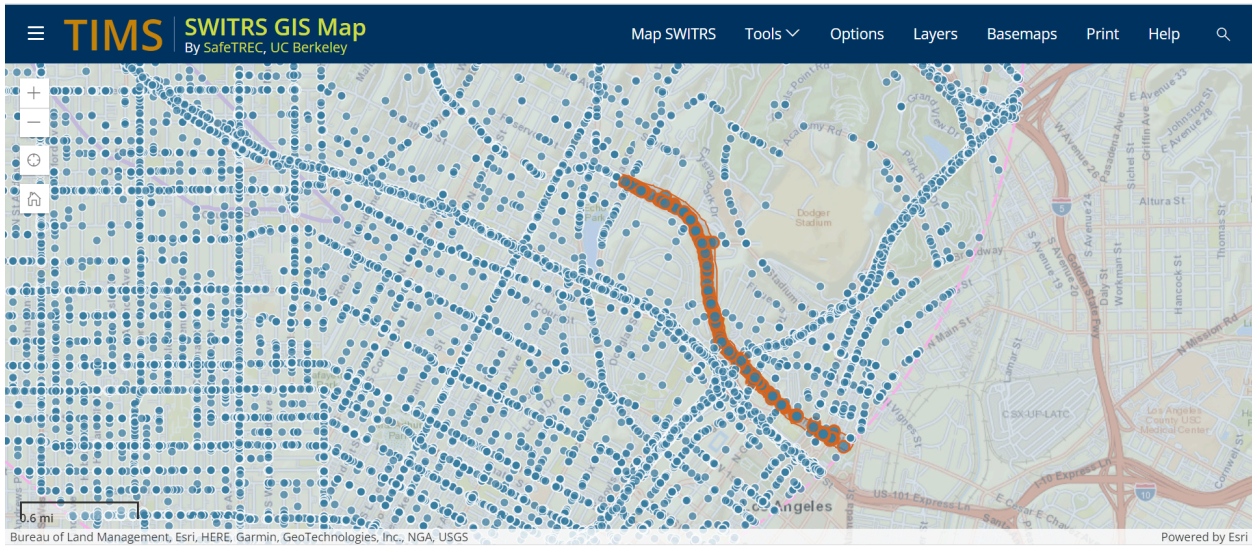
72 (14.9%)

### Bike Crashes

73 (15.1%)

### Motorcycle Crashes

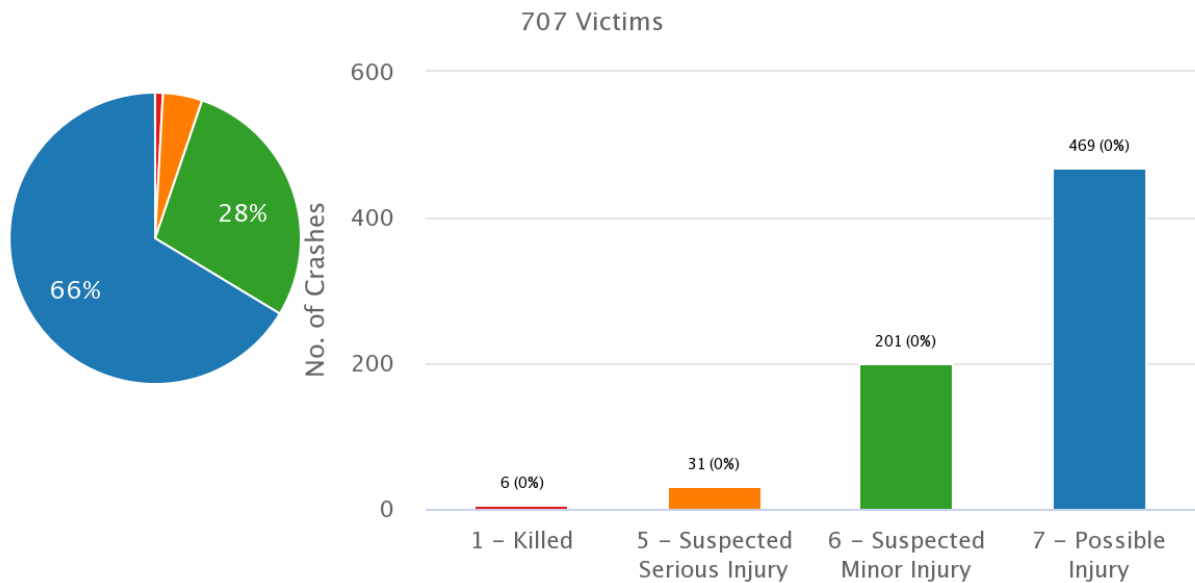
40 (8.3%)



Bureau of Land Management, Esri, HERE, Garmin, GeoTechnologies, Inc., NGA, USGS

Powered by Esri

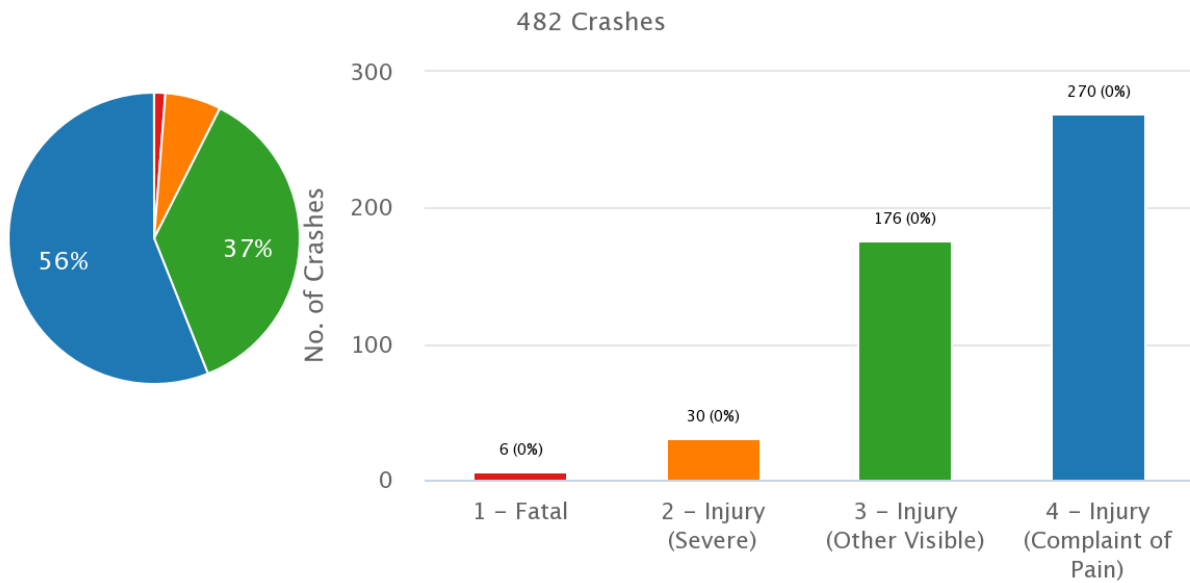
Number of Victims by Victim Degree of Injury



*Victim Degree of Injury*

- 1 - Killed
- 5 - Suspected Serious Injury
- 6 - Suspected Minor Injury
- 7 - Possible Injury

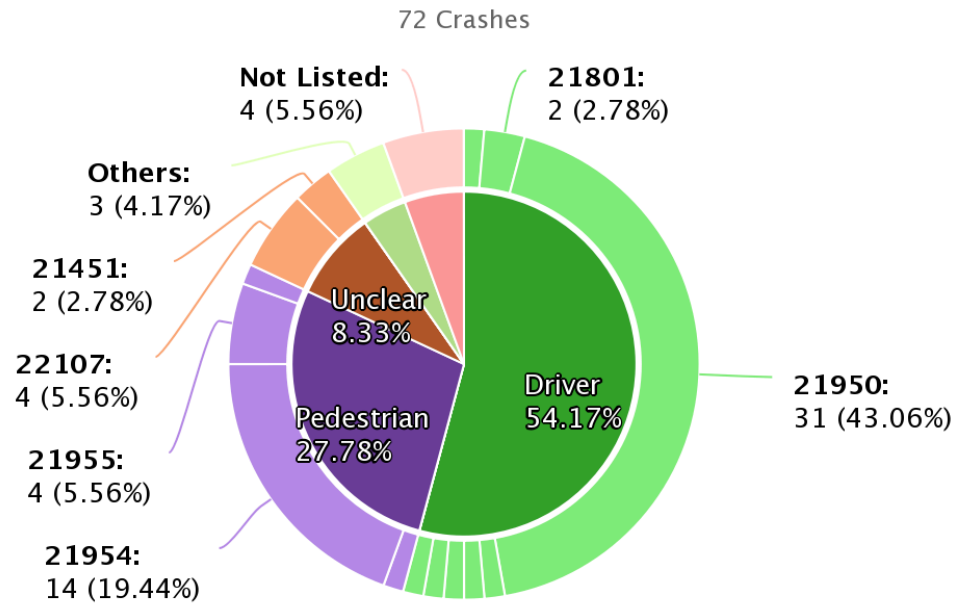
## Number of Crashes by Crash Severity



### ***Crash Severity***

- 1 - Fatal
- 2 - Injury (Severe)
- 3 - Injury (Other Visible)
- 4 - Injury (Complaint of Pain)

## Number of Crashes by Type of Violation



### Party Violation Classification

