

# Setup Trello cards as Eclipse Mylyn Task Repository

---

Trello is a very useful tool used for task collaboration and organization. It groups tasks into boards and each board can have groups.

Tasks can be assigned, shared and commented on.

However, as a developer, it would be nice to be able to integrate Trello tasks into Eclipse so that the Mylyn Task List can be leveraged for task focused development.

Mylyn supports connectors to various task management and project tracking tools. However, there is no tool that connects directly to Trello.

There is a solution to this.

By using Web Template Connector along with the Trello API, Trello can be integrated seamlessly into Mylyn and thus into your Eclipse workflow.

To set this up, you must follow these instructions.

## Create a Trello account

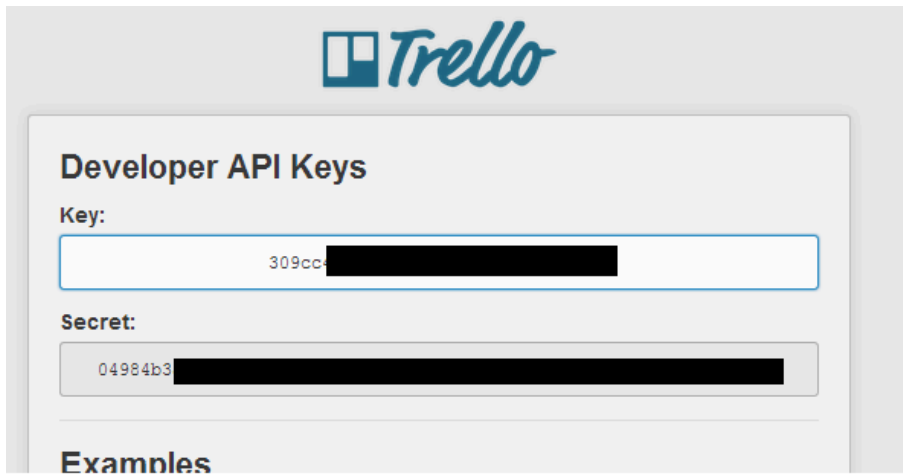
If you have not already done so, please setup a Trello account. This will be needed to keep track of your projects and tasks.

## Setup Trello direct API access

The api access will be necessary in order to give Mylyn visibility into your Trello cards.

1. Log into [trello.com](https://trello.com).

2. Go to <https://trello.com/1/appKey/generate> and copy the developer key.



3. Copy the developer key for later reference.
4. Build the following url using the developer key

```
https://trello.com/1/authorize?key=
{developer key}
&name=Mylyn%20Tasks&expiration=never&response_type=token
```

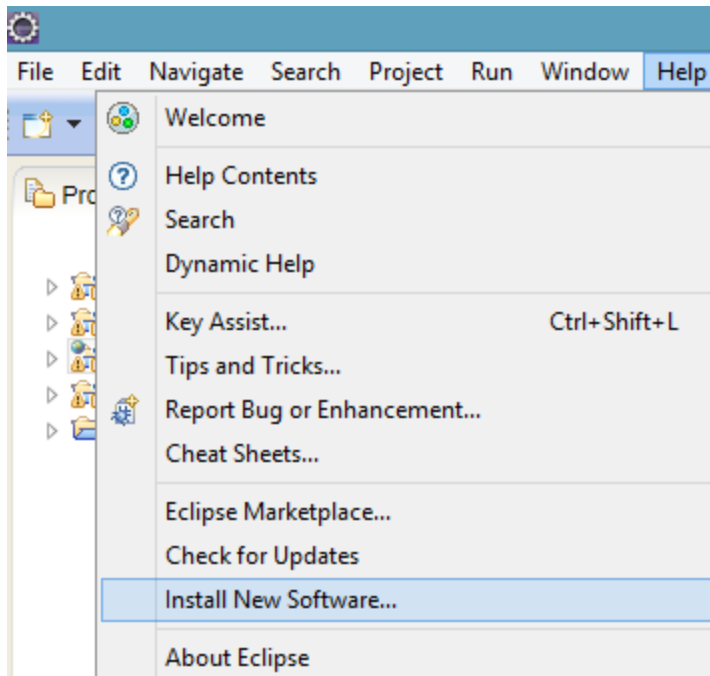
5. Navigate to the new url in order to get your user token.
6. Save the user token for later reference
7. Build the following url using the developer key and the user token

```
https://trello.com/1/members/my/cards?key=
{developer key}
&token=
{usertoken}
```

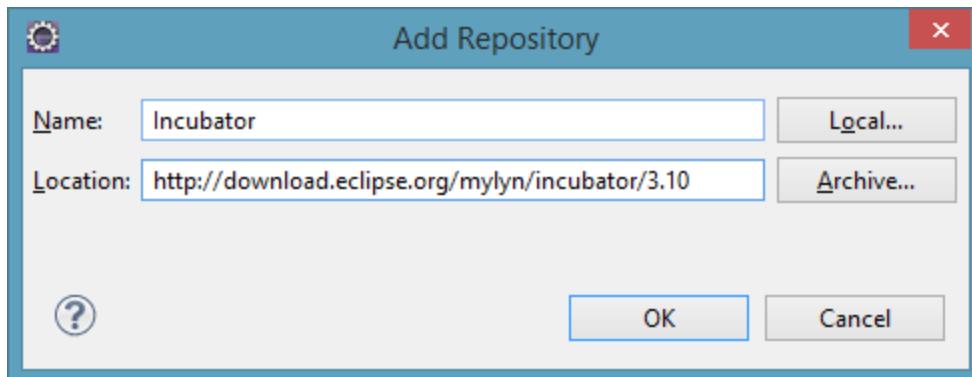
8. Navigate to the url and confirm that you see either '[]' or a large json string.

## Setup Eclipse Mylyn Repository

1. Assuming you have installed Eclipse, you must select **Help > Install New Software...** from the main menu.



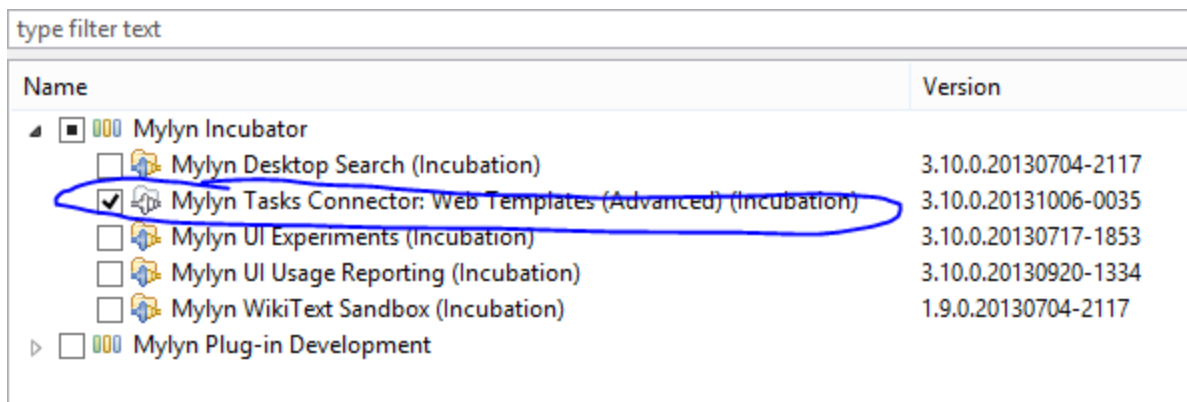
2. In the Install dialog box, click the **Add..** button.
3. Enter the following new site



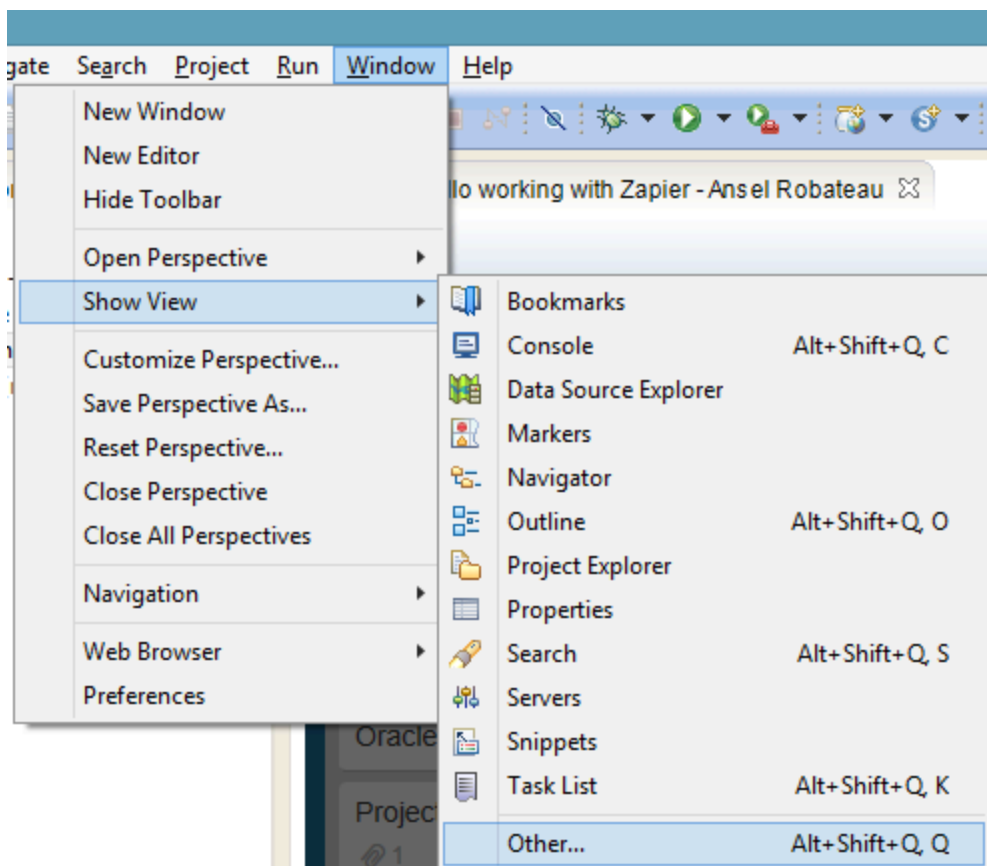
**Note:** You must select the url that matches the version of the Mylyn plugin that you have already installed.

4. Press **OK**.

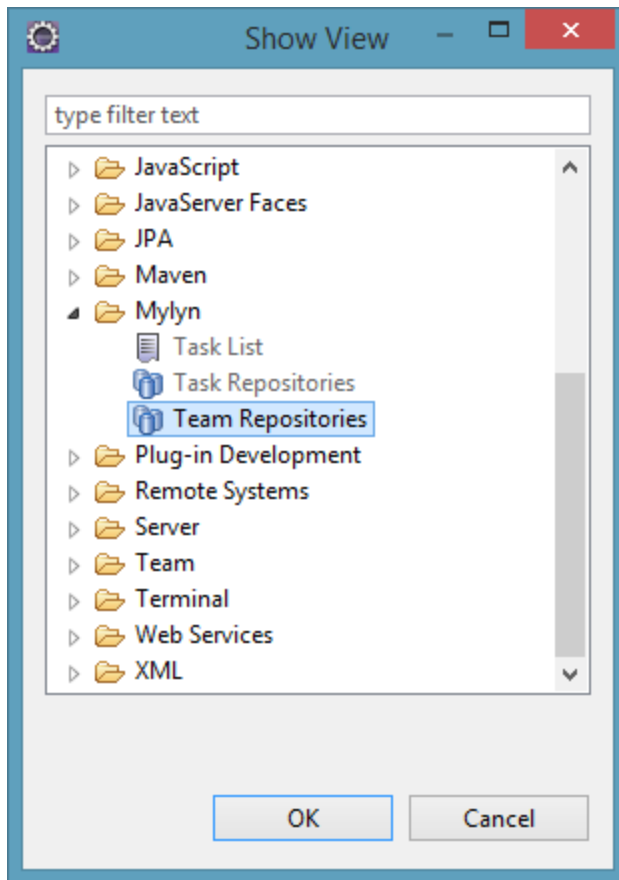
5. Select the **Mylyn Tasks Connector: Web Templates (Advanced)** application.



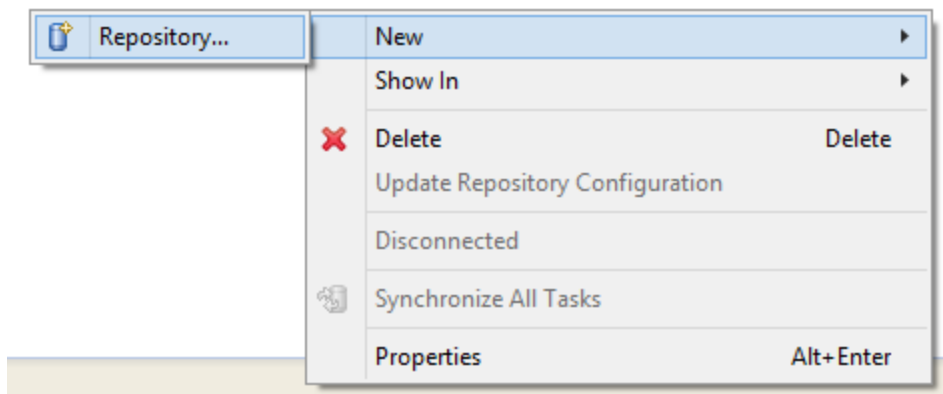
6. Press **Next** to begin the installation.
7. Accept the agreement and finish the installation by pressing appropriate buttons in the installation wizard.
8. Once installed, Eclipse may ask for you to restart. Go ahead and restart.
9. Open the Mylyn Task Repositories view by selecting **Window > Show View > Other...** from the main menu



10. Then select **Team Repositories**.



11. Right click the Team Repositories window to create a New Repository...



12. In the **New Repository** dialog box select **Task Repository** and press **Next**.

13. Select the **Web Template (Advanced)** repository type then press **Next**.

14. In the Properties for Task Repository dialog box, enter "<https://trello.com>" in the Server field and give the repository a label. For example: "Trello API".

15. In the Additional Settings section enter the following parameters:

- a. applicationkey = developer key
- b. userkey = user token

16. In the Advanced Configuration set the Task URL URL to "https://trello.com/c/"

17. Set New Task URL to "https://trello.com"..
18. Set the Query Request URL to  
"https://trello.com/1/members/my/cards?key=\${applicationkey}&token=\${userkey}"
19. For the Query Pattern enter

```
\ "id\" [\x00-\x7F]+?\"idShort\" : ({Type} [0-9]+) [\x00-\x7F]+?\"name\" : \" ({Description} [\x00-\x7F]+?) \" [\x00-\x7F]+?\"shortLink\" : \" ({Id} [\x00-\x7F]+?) \" [\x00-\x7F]+?\"url\"
```

**Properties for Task Repository**

**Web Repository Settings**  
Select a server template example and modify to match the settings for your project, usually found in the query URL. For more connectors see <http://eclipse.org/mylyn>

Server:

Label:  ☐ Disconnected

User ID:  ☒ Anonymous

Password:  ☐ Save Password

**Additional Settings**

Parameter	Value
applicationkey	309cc44335c160136532aa0ae1
userkey	0b61fa56e4588752cbc7b3739c

**Advanced Configuration**

Task URL:

New Task URL:

Query Request URL:  GET

Query Pattern:

Login Request URL:  GET

Login Form URL:

Login Token Pattern:

Character encoding: ☒ Default (UTF-8) ☐ Other:

**Http Authentication**

**Proxy Server Configuration**

**Task Editor Settings**

20. Press **Finish**.
21. The new Trello repository will appear.
22. Create a query by opening the Mylyn Task List.
23. Right click the pane and select New Query.
24. Select Trello API as the repository.
25. Press Next.
26. Enter the name of your query.
27. Expand the Advanced Configuration and make sure the Query Pattern is filled in.

**Note:** Queries can be filtered by board so that they can be grouped in Mylyn by Board

Name (Project Name). To do so you can enter the board id by specifying the “idBoard” parameter in the Query.

If your board id is “1234” then the Query Pattern would be

```
[{} [^]]+ [{"idBoard":["1234"] [^]]+ [{"name":[""] ({"Description"} [^"]+) ["] [^]]+ [{"shortLink":[""] ({"Id"} [a-zA-Z0-9]+) ["] [^]]+ [{}]
```

You can find the idBoard parameter value by examining the json response.

28. Press Preview to confirm that there are no errors.

29. Press Finish.

30. Trello tasks assigned to you will now appear in the Mylyn Task List.

