

# README

See also: [inject fine scale aliquots into database and use vector tile service · Issue #14 · MarineSensitivity/workflows](#)

Google Drive: [msens/data/raw/boem.gov/blocks/](#)

## Hourly Wind Speed

[Renewable Energy GIS Data | Bureau of Ocean Energy Management](#)

Modeled wind speed developed by the National Renewable Energy Laboratory (NREL). The geospatial data are represented as points. Hourly wind speed values are stored in centroids of BOEM Aliquots in the Pacific and Atlantic Regions and BOEM Lease Blocks in the Gulf of Mexico Region.


Each download contains a geodatabase, metadata, and ArcGIS toolbox. The ArcGIS toolbox can be used to develop polygons from the points for cartographic purposes.

- [Atlantic](#)
- [Gulf of Mexico](#)
- [Pacific](#)
- [Hawai'i](#)

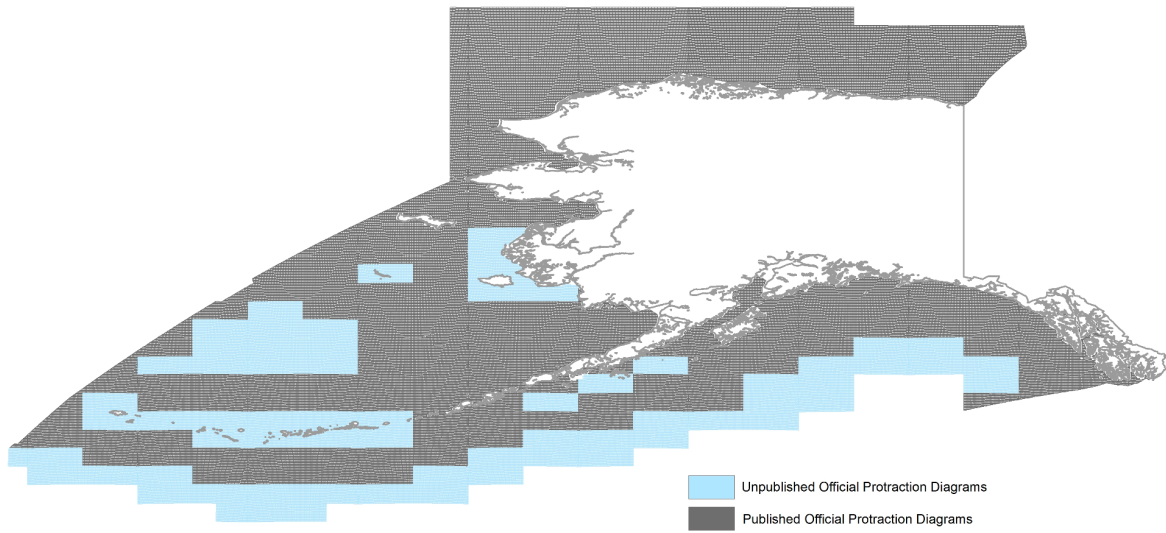
[Deliverable 3.2 NREL Geodatabase Memo.pdf](#)

## Alaska

[Alaska Cadastral Data | Bureau of Ocean Energy Management](#)

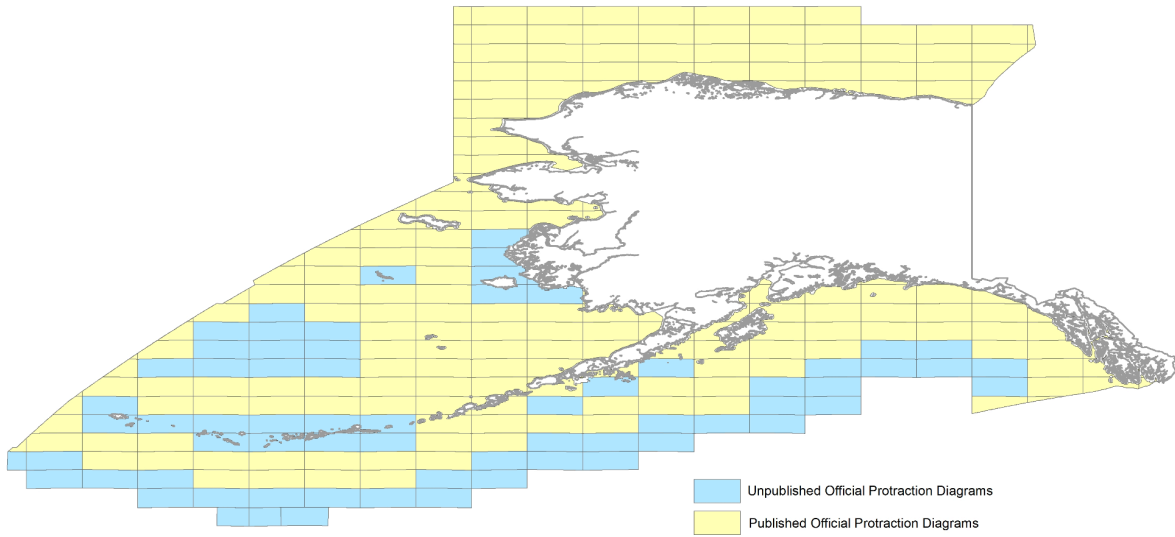
Standard OCS Blocks are 2304 hectares	<a href="#">AK_BLKCLIP.zip</a>	<a href="#">metadata</a>	
---------------------------------------	--------------------------------	--------------------------	---

Out: [blocks/](#)



Q: Also do OPDiagrams (Region > OPDiagram > Block)?


<p>Official Protraction Diagram (OPD) outlines clipped to the Submerged Lands Act Boundary.</p>	<p><a href="#">AK_PROT_CLIP.zip</a></p>	<p><a href="#">metadata</a></p>	
---	---	---------------------------------	---



Out: [protclip/](#)

## Atlantic

In: [Atlantic Cadastral Data | Bureau of Ocean Energy Management](#)

<p>OCS Block 1/16 Aliquot Parts (144 hectares per standard block)</p>	<p><a href="#">ATL_ALIQUOTS.zip</a> Updated (11/2/2012)</p>	<p><a href="#">metadata</a></p>	
---	---	---------------------------------	---

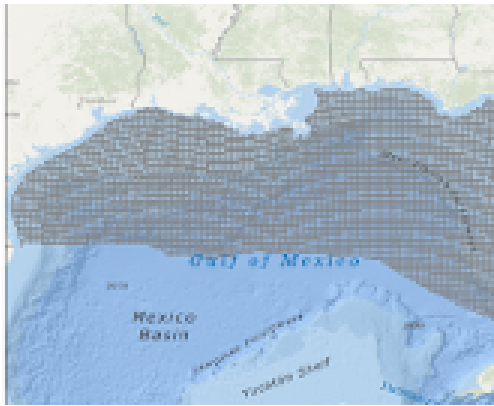
Direct: [boem.gov/Oil-and-Gas-Energy-Program/Mapping-and-Data/ATL\\_ALIQUOTS.aspx](http://boem.gov/Oil-and-Gas-Energy-Program/Mapping-and-Data/ATL_ALIQUOTS.aspx)

Out: [ATL\\_ALIQUOTS/](#)

## Gulf of Mexico

In: [Geographic Mapping Data in Digital Format](#)

### Block Polygons - Clipped



shap  
efile  
+

geodat  
abase  
+

11/14/2  
019  
9:20:27  
AM

Contains information that defines the Federal lease blocks and defines the Federal lease blocks clipped along the Fed/State boundary for the GOM OCS Region. Blocks or portion of blocks of the state side of the Fed/State boundary are not included.

[metadata](#)

Out: [BlockPolygonsClipped.gdb/](#)

## ?Hawaii

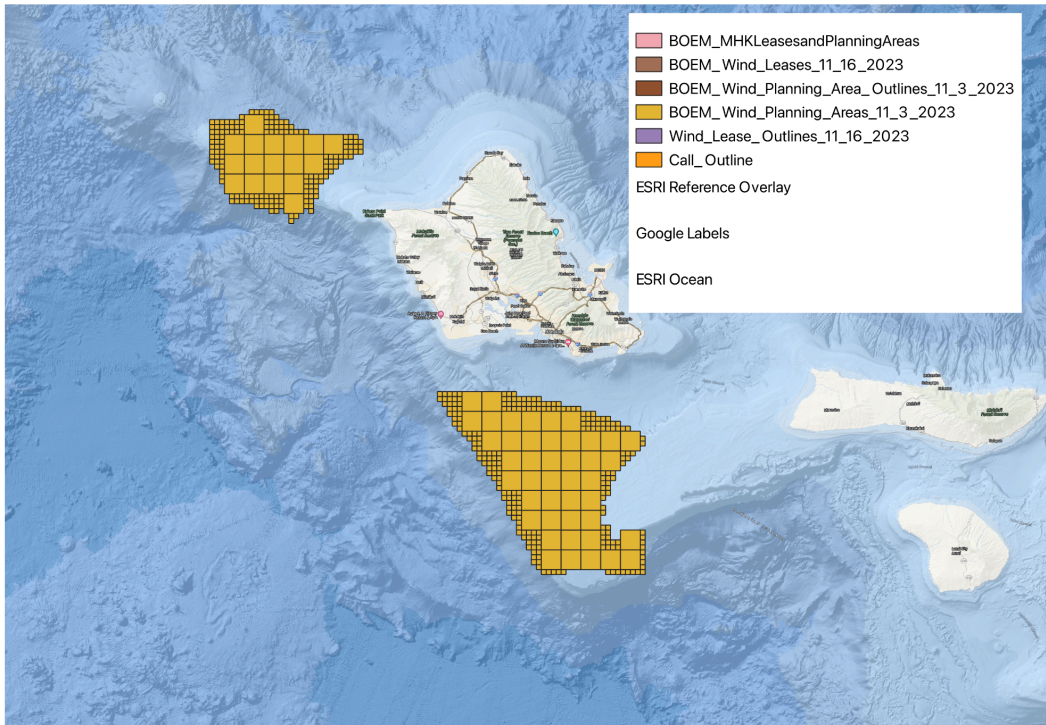
[Renewable Energy GIS Data | Bureau of Ocean Energy Management](#)

Renewable Energy Leases and Planning Areas

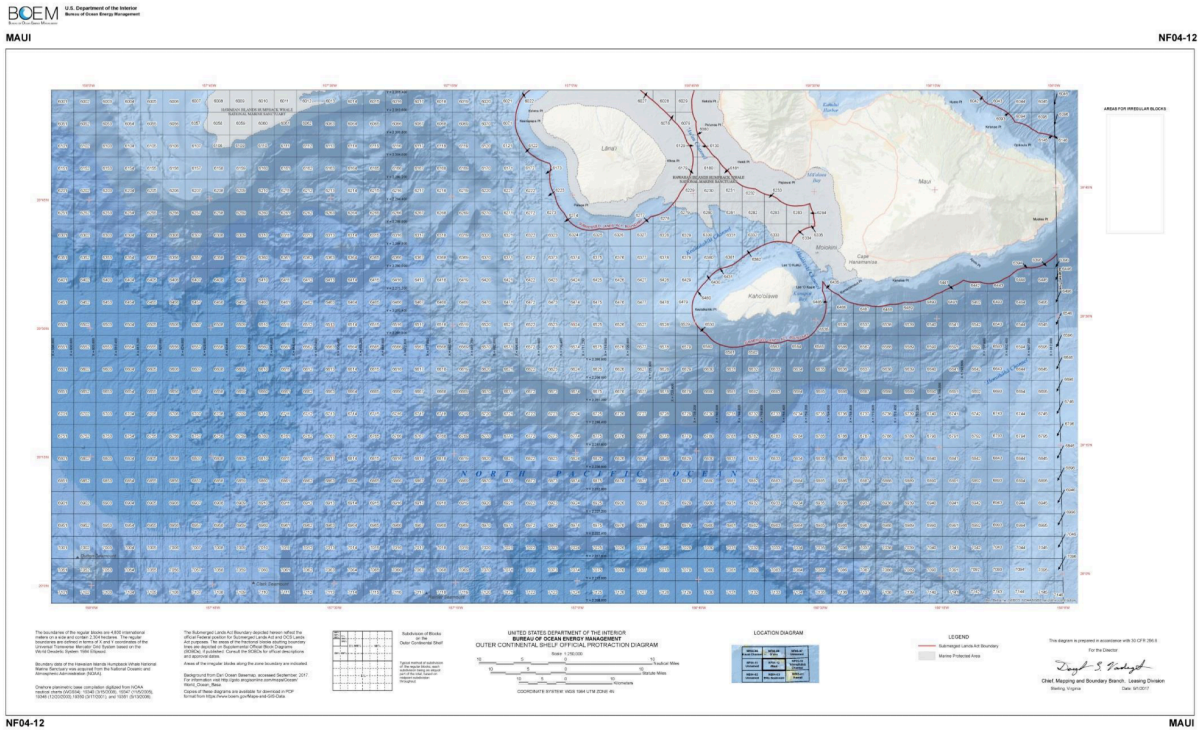
Boundaries of renewable energy lease areas, wind planning areas, and marine hydrokinetic planning areas.

[Geodatabase](#)

Out: [BOEMWindLayers\\_4Download.gdb](#)/BOEM\_Wind\_Planning\_Areas\_11\_3\_2023



BUT  
Vandegraft 2018 - slides BDS\_for\_NOAA\_Open\_House\_2018.pdf




## First Official Protraction Diagram for Hawaii: Maui

Vandegraft 2017 - A Boundary Delineation System for the Bureau of Ocean Energy Management  
Managementa proc-1-118-2018.pdf

## Pacific

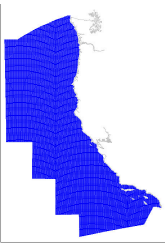
### [Pacific Cadastral Data | Bureau of Ocean Energy Management](#)

- [metadata.boem.gov/geospatial/Hawaii Official Protraction Diagram Images - NAD84.xml](https://metadata.boem.gov/geospatial/Hawaii%20Official%20Protraction%20Diagram%20Images%20-%20NAD84.xml)
- Official Protraction Diagrams (OPDs) (2 degrees wide by one degree high)
  - Blocks (2304 hectares; 4800 x 4800 meters on a UTM).
    - Aliquot (144 hectares)

OCS Block 1/16 Aliquot Parts (144 hectares per standard block)	<a href="#">PC_ALIQUOTS.ZIP</a> Updated 04/02/13	metadata	
--	---	----------	---

Out: [PC\\_ALIQUOTS/](#)

Q: Use Blocks (vs Aliquots), incl. Pacific?

Standard OCS Blocks clipped to the Submerged Lands Act (SLA) boundary on the shoreward side (2304 hectares per standard block).	<a href="#">PC_BLK_CLIP.zip</a> Updated 02/10/06	<a href="#">metadata</a>	
---	---	--------------------------	---

Out: [PC\\_BLK\\_CLIP/](#)