

Karad Railway Station

The **Amrit Bharat Station Scheme** has been launched for development of Railway stations on Indian Railways. The scheme envisages development of stations on a continuous basis with a long-term approach.

It involves preparation of Master Plans and their implementation in phases to improve the amenities at the stations like improvement of station access, circulating areas, waiting halls, toilets, lift/escalators as necessary, cleanliness, free Wi-Fi, kiosks for local products through schemes like 'One Station One Product', better passenger information systems, Executive lounges, nominated spaces for business meeting, landscaping, etc keeping in view the necessity at each station. The scheme also envisages improvement of building, integrating the station with both sides of the city, multi-modal integration, amenities for Divyangjans, sustainable and environment friendly solutions, provision of Ballast less tracks, phasing and feasibility and creation of city centers at the station in the long term.

Under the scheme, **1337 stations** have been identified for upgradation/modernization over Indian Railways.

History of Karad Station:

Karad Railway Station, located in the Satara district of Maharashtra, has a history that dates back to the British colonial era when the Pune–Miraj–Londa railway line was established in the late 19th century. Originally part of the metre-gauge network operated by the Southern Maratha Railway, the station played an important role in connecting the western region of Maharashtra with other parts of the country. Over time, the railway line was converted to broad gauge to accommodate increased traffic and faster trains, helping Karad grow as a regional transportation hub.

The station's strategic location near the confluence of the Krishna and Koyna rivers has made it an important point for passenger and freight movement, especially given the area's agricultural and sugar industry prominence. Over the decades, Karad Station evolved to meet growing passenger demands and today serves as a significant stop in the Pune railway division. Its development reflects the broader modernization efforts of Indian Railways to improve connectivity and passenger amenities in the region.

Revitalizing Karad Station under the Amrit Bharat Station Scheme

Karad Railway Station, strategically located in southwestern Maharashtra, serves as a vital transportation hub linking the region with neighboring areas. Known as the sugar bowl of Maharashtra due to the presence of many sugar factories, Karad is also an important educational center in Western Maharashtra. The station is situated at an elevation of approximately 596 meters above sea level and consists of three platforms. Under the Amrit Bharat Station Scheme, Karad Station is set to undergo major redevelopment with an investment of around ₹12.50 crore, aimed at enhancing its infrastructure and passenger amenities through modern facilities, improved accessibility, and sustainable design.



Before Development





Proposed View

Facility planned at Station:

In Phase-I, following improvement works costing Rs. 12.50 Cr. are planned –

- **Enhanced Station Approaches and Circulating Area:** Improvement of station approaches with entry & exit, drop off zone, Porch, signages and landscaping for beautification of circulating area.
- **Inclusive Accessibility and Facilities for Divyangjan:** Divyangjan-friendly design with accessible signage, dedicated toilet facilities, and separate parking areas for two-wheelers, four-wheelers, and Divyangjan passengers.
- **Façade Enhancement:** Major improvement of the façade of the existing building with local art work on walls for improved aesthetics.
- **New Passenger Amenities and Improved:** Provision of new booking office, Concourse, AC & non-AC waiting hall, modern toilet block and improvement of retiring rooms, old station building etc.
- **Platform Improvements:** Improvement of Platform surface & new shed and covering of platform surfaces upto FOB
- **Upgraded Passenger Information Systems:** Improvement to passenger information system by providing Coach Guidance display board, Multiline Display Boards, Single Line Display Boards, Public Addressing System, Large LED screens and GPS based Digital Clock.

Design Philosophy

The local design philosophy for Karad Railway Station blends modern amenities with a functional and aesthetically pleasing environment. The design will focus on the following principles:

- **Reflecting Modern Architecture:** Incorporating architectural features such as Sloping roofs with Greek architecture constructing of cornices with Greek columns.
- **Use of Regional Materials:** Utilizing local materials like brick work, glass GRC and Mangalore tiles to maintain harmony with the surrounding landscape.
- **Sustainability and Climate Sensitivity:** Focusing on energy-efficient cooling, shade structures, and green spaces to address the semi-arid climate while promoting sustainability by incorporating provision for solar panels on roofing sheets of parking.
- **Modern Amenities:** Modern infrastructure is been proposed by providing passenger amenities like digital signages, roof plazas, lift and escalators, divyangjan friendly toilets, ramps, etc. with universal design.
- **Warm Color Palette:** Using earthy tones inspired by Maharashtra's landscape.

These principles will transform Karad Railway Station into a modern, sustainable, and enhancing the passenger experience and creating a landmark for region.

Challenges overcome:

The old station building lacked the aesthetics and the lack of proper space utilization, which have been improved by the revamping of the complete station building. Now the station building is more spacious and passenger friendly. The existing circulating area was not having the proper movement of the vehicle with single entry & exit and the same has been improved through the planned development of circulating area, separate entry/exit and increased parking space. This will give an ease of movement of vehicles and proper vehicle navigation in the circulating area. The station platform's surfacing was improved with tactile marking for Divyangjan, and additional platform shelters were provided for the passengers waiting at platform, which will further help them during hot and rainy weather. New spacious waiting rooms/ halls were constructed, which will provide a comfortable waiting space to the passengers. New booking offices with latest facilities giving restriction free access to passengers. Modern toilets are constructed providing hygienic & comfortable experience to users as well as facilities for divyangjan are proposed.

Current Status of Work:

The redevelopment work at Karad Railway Station is progressing steadily, with a tentative completion during 2025. Once completed, the station will transform into a symbol of modernity and efficiency, setting new benchmarks in railway infrastructure and passenger amenities, while preserving the region's cultural heritage. This revitalization will enhance connectivity, comfort, and convenience for travelers, making Karad a key hub in the region.

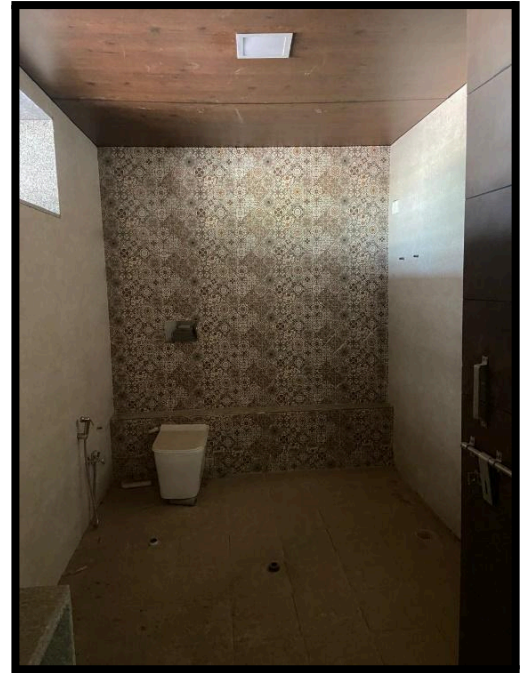
Portico (work in progress)



Entrance Lobby (work in progress)



Upper Class Waiting Room Toilet & Bathroom (Work in progress)



Platform Improvement (Work in Progress)



Proposed Entrance Lobby View

