

## Attendees:

- Georg Ferdinand Schneider (Individual CLA but affiliated with Schaeffler)
- Joel Bender (Cornell University)
- Pouya Zangeneh (University of Toronto)
- María Poveda-Villalón (Universidad Politécnica de Madrid) (regrets: only 30-40 minutes)
- Maria Husmann (Siemens AG)
- Serge Chávez (Universidad Politécnica de Madrid)
- Gonçal Costa (LaSalle University)
- Edison Chung (MINES Saint-Etienne)
- Madhumitha Senthilvel (RWTH Aachen University)
- Mads Holten Rasmussen (NIRAS)
- Francisco Regateiro (Tecnico / Lisbon University)
- Herve Pruvost (Fraunhofer IIS EAS)
- Kris McGlinn
- Marjo Smit
- Alberto Giretti
- Calin Boje

## Date and time

- 08/09/2020
- 17:00 - 18:30 CEST

## Agenda (tentative)

1. Introduction
2. Organisational
  - Resume after summer break
  - W3C LBD CG meets ... - Selected Topics on Linked Data, Semantic Web and Graph Technologies in the Built Environment

08.09.2020	Exchange with the " <a href="#">W3C Web of Things (WoT) Working Group</a> " with <a href="#">Sebastian Käbisch</a> and <a href="#">Maria Husmann</a> from Siemens AG
22.09.2020	n.n.
06.10.2020	" <a href="#">Building automation system - BIM integration using a linked data structure</a> " by <a href="#">Jenn J. McArthur</a> from Ryerson University ( <a href="#">GoogleScholar</a> )
20.10.2020	" <a href="#">Building A Knowledge Graph Of Commercial Real Estate At Cherre</a> " by <a href="#">John Maiden</a> from <a href="#">Cherre</a>
03.11.2020	n.n.

17.11.2020	" <a href="#">Towards the adoption of automated regulatory compliance checking in the built environment</a> " by <a href="#">Thomas Beach</a> from Cardiff University ( <a href="#">GoogleScholar</a> )
01.12.2020	" <a href="#">Scan-to-graph: Semantic enrichment of existing building geometry</a> " by <a href="#">Jeroen Werbrouck</a> from Ghent University

### 3. WoT

- Exchange with the "W3C Web of Things (WoT) Working Group" with Sebastian Käbisch and Maria Husmann from Siemens AG
- Discussion Alignments between WoT and W3C LBD CG (30 min)

### 4. Open space for discussions and group topics

## Minutes

### 1. Introduction

### 2. Organisational

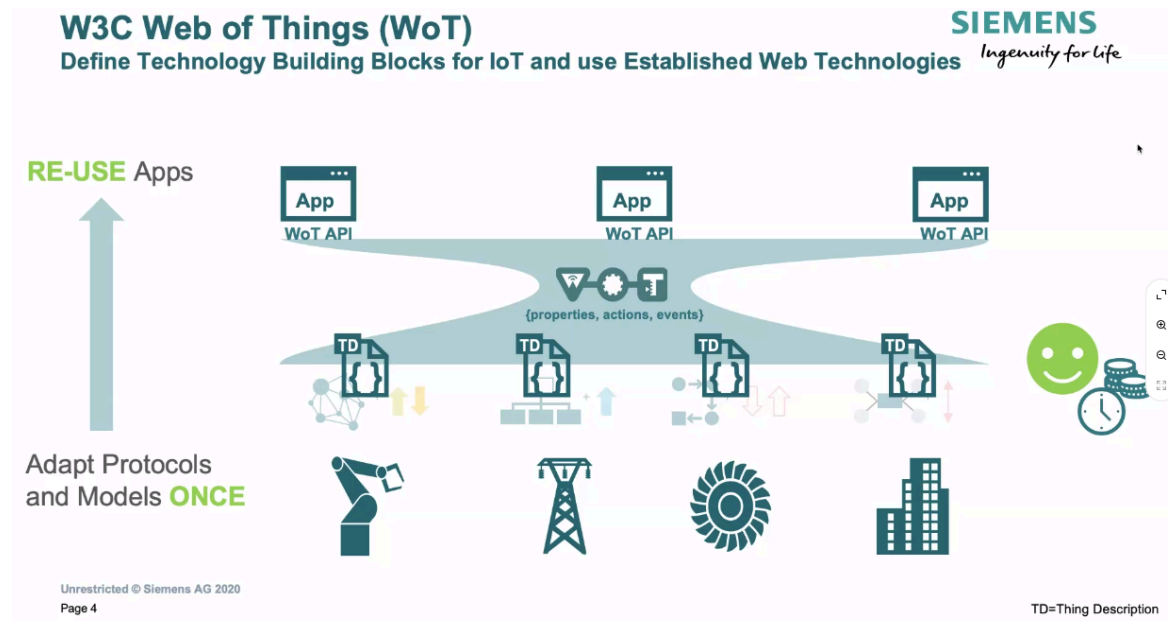
- Resume after summer break
- W3C LBD CG meets ... - Selected Topics on Linked Data, Semantic Web and Graph Technologies in the Built Environment

08.09.2020	Exchange with the " <a href="#">W3C Web of Things (WoT) Working Group</a> " with <a href="#">Sebastian Käbisch</a> and <a href="#">Maria Husmann</a> from Siemens AG
22.09.2020	n.n.
06.10.2020	" <a href="#">Building automation system - BIM integration using a linked data structure</a> " by <a href="#">Jenn J. McArthur</a> from Ryerson University ( <a href="#">GoogleScholar</a> )
20.10.2020	" <a href="#">Building A Knowledge Graph Of Commercial Real Estate At Cherre</a> " by <a href="#">John Maiden</a> from <a href="#">Cherre</a>
03.11.2020	n.n.
17.11.2020	" <a href="#">Towards the adoption of automated regulatory compliance checking in the built environment</a> " by <a href="#">Thomas Beach</a> from Cardiff University ( <a href="#">GoogleScholar</a> )
01.12.2020	" <a href="#">Scan-to-graph: Semantic enrichment of existing building geometry</a> " by <a href="#">Jeroen Werbrouck</a> from Ghent University

### 3. WoT

- Description of the "W3C Web of Things (WoT) Working Group" with Sebastian Käbisch and Maria Husmann from Siemens AG
  - Main problem in IoT applications: Integration of heterogeneous protocols, security, data model, domains

- Web technology as an enabler to reduce integration costs through open royalty-free standards
- Service orchestration in the web works fine. example holiday booking site, which integrates many different data sources
- Web of things:



- The Thing Description:



- Discussion Alignments between WoT and W3C LBD CG (30 min)

- Q [Georg]: WoT WG came from an interest group? How is the interplay of the WG and IG
  - Q [Georg]: How do existing W3C standards help in WoT?
    - JSON LD
    - LD relation to other things
    - Contact point:
      - a. <https://github.com/TechnicalBuildingSystems/OpenSmartHomeData>
      - b. Building descriptions from IFC
  - Q [Georg]: Meaning of Celsius vs. iot:Celsius ?
  - Q [Georg]: Relate to other things e.g. Buildings -> Possible to relate from things, but still a point for open discussion
  - Q [Georg]: How does WoT TD relate to other existing standards?
    - Q [Georg]: Thing Description vs. [Asset Administration Shell from I4.0 Platform](#)
      - a. Thing descriptions is not comparable
      - b. AAS is more a manual
      - c. Runtime data is not involved
    - Q [Joel]: Is there a protocol mapping to BACnet like there is to MQTT?
      - a. BACnet binding available as a prototype (unclear if freely available)
    - Q [Joel]: Is there a semantic mapping between these things and similar concepts in the CHIP (Connected Home over IP) effort in the Zigbee Alliance?
  - Q [Marjo] How does the conversion happen from paper/ file-based descriptions of things to a TD?
    - Currently this is a manual process but if done in future at the same time with the manual description this can be done
    - Auto generate thing descriptions from BACnet (Maria Husmann)
- ACTIONS: Present W3C CG LBD calls work on building modelling to W3C WoT IG/WG
- TPAC should be a good choice, allows to show CG also to broader audience, underline need for industry
4. Open space for discussions and group topics

## **Next Call**

- 22/09/2020, Tue, 16:00-17:30@CEST/ 7:00-8:30@PDT/ 14:00-15:30@UTC

We are interested in getting suggestions from the community about potential agenda items for the following calls. Please send your suggestions to [public-lbd@w3.org](mailto:public-lbd@w3.org), whether you have a short presentation to bootstrap the discussion, and an approximate duration you think the discussion will last.

## **Previous minutes**

<https://docs.google.com/document/d/1vGWEwbvVk0wa9JaBJtUMqWqckfa2IASVcr1swsBIR-I/edit>