

GO/Static IP Address

Video of this can be found at: <https://youtu.be/XIZ4v9y6oWE>

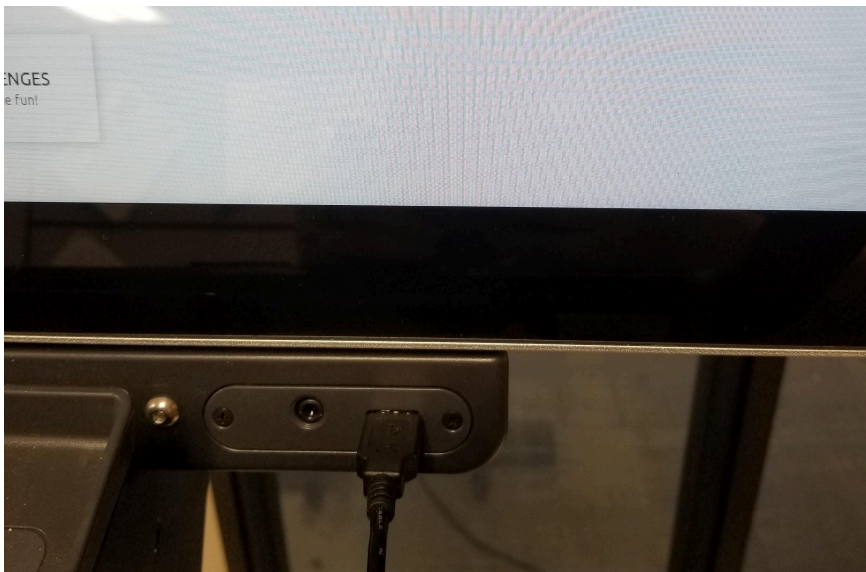
Before Starting:

Customer will need a

- USB connector keyboard with a mouse if possible

Getting started

Plug the USB connection into the front of the touch screen

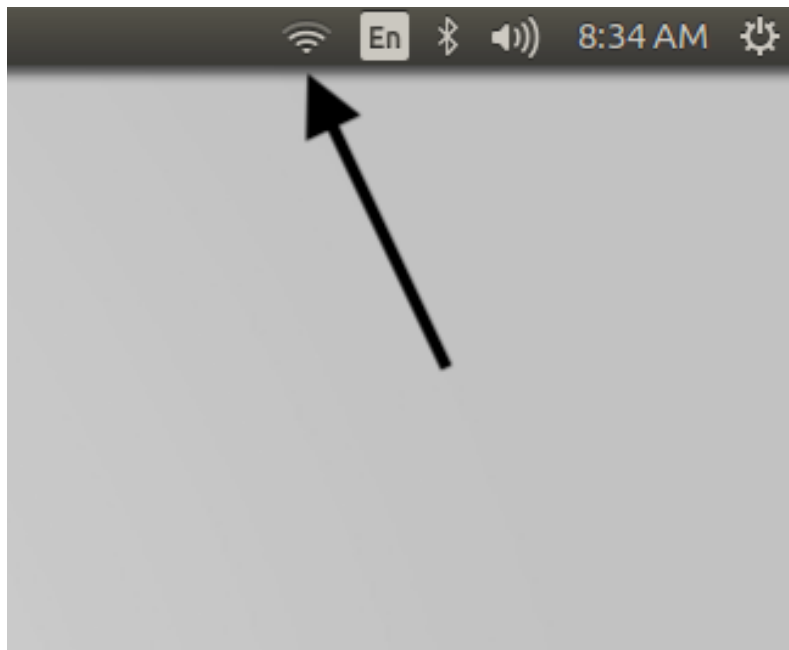


1. Select Alt Tab on the keyboard
 - a. Hold Alt key until Purple Desktop is highlighted
 - i. Let go of Alt key when highlighted



b.

2. Select the WiFi connection in the upper right hand corner of screen



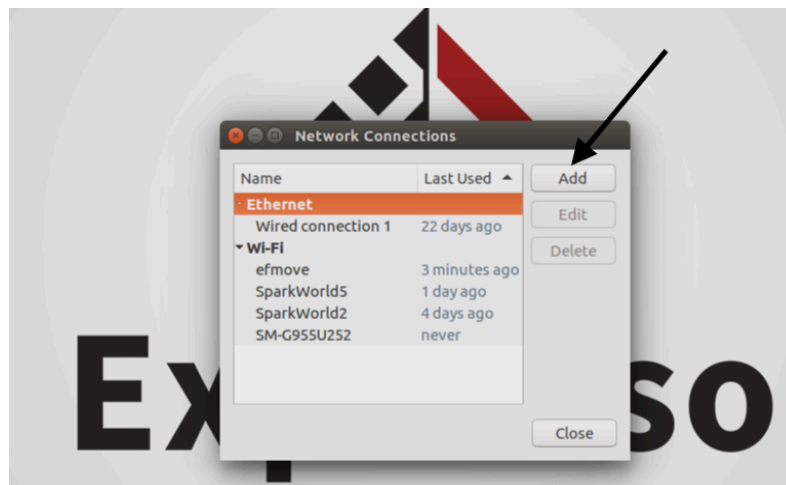
a.

3. Select Edit Connections



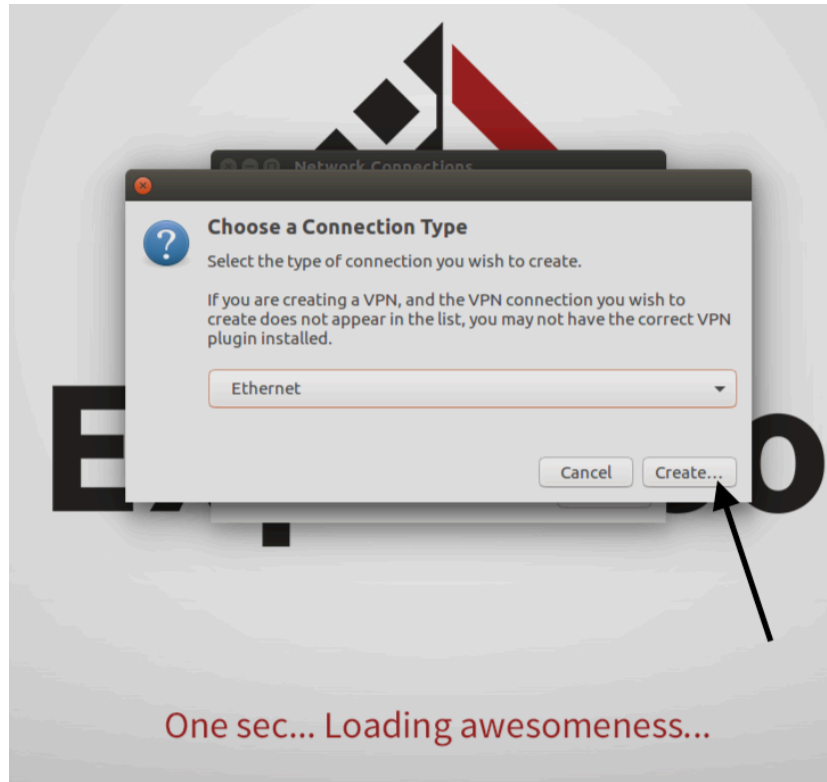
a.

4. Select Add

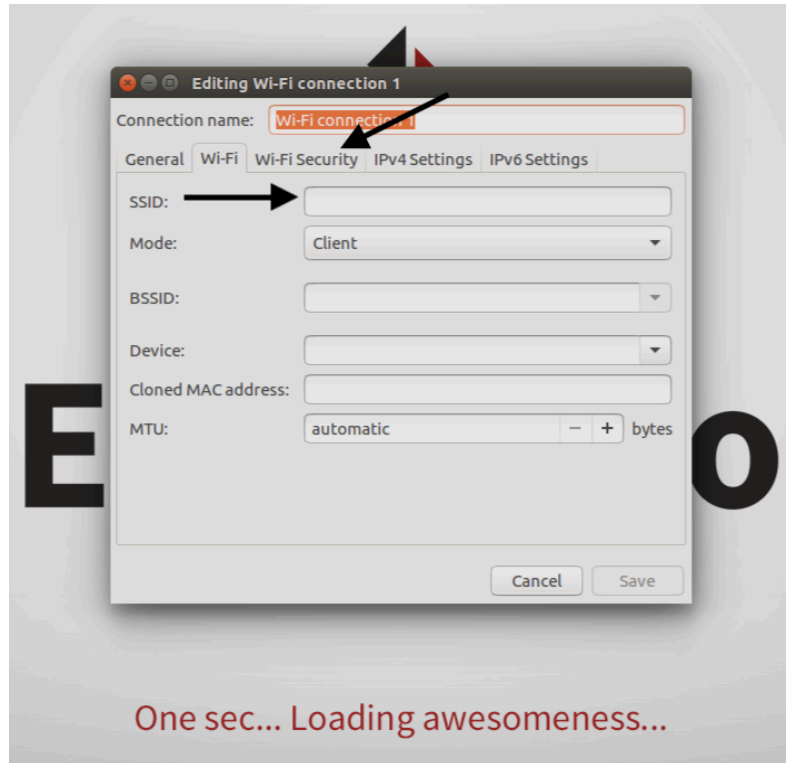


a.

5. Select connection type by touching the down arrow key
 - a. Ethernet or WiFi
 - b. Select Create

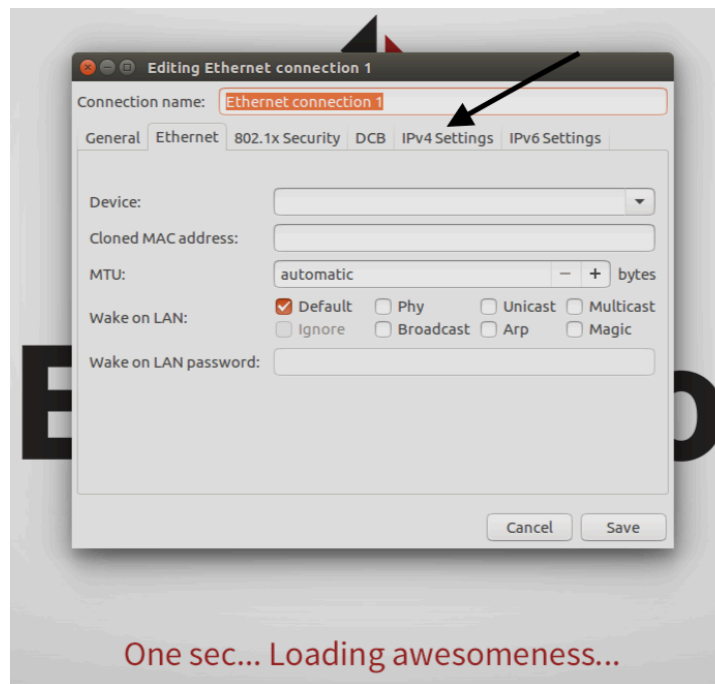


- c.
- 6. An Editing Ethernet or WiFi Connection 1 box will open
 - a. Rename the Connection (optional)
 - i. WiFi only:
 - 1. Type in the network or SSID name to connect to
 - 2. Set the security of the network, if any



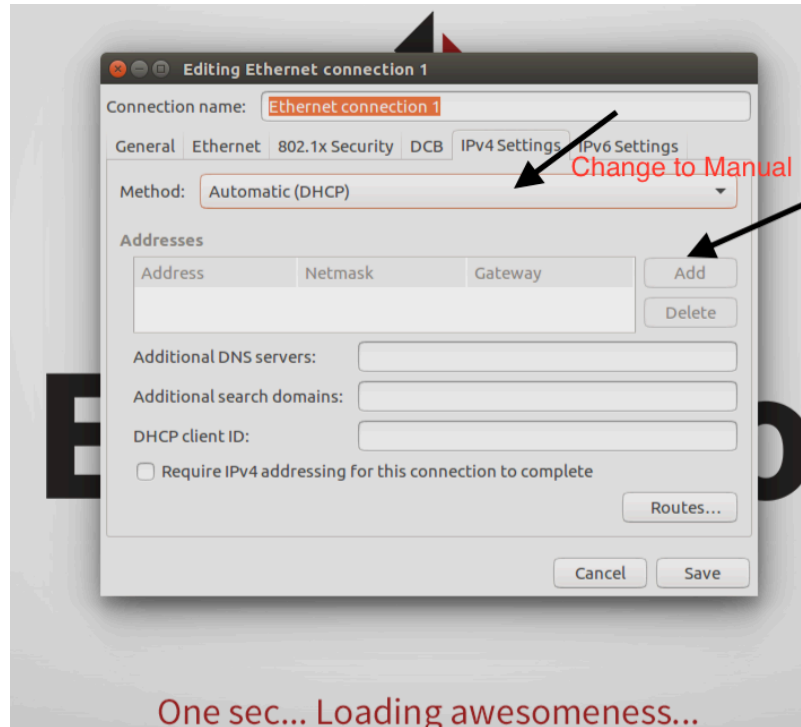
a.

b. Select IPv4Settings



i.

c. Change the Method to Manual then select Add



- i.
- d. Type in the IP address
- e. Tab to enter the Netmask
- f. Tab to enter the Gateway
- g. Enter the DNS server into Additional DNS Servers
 - i. If you don't have one use 8.8.8.8, 8.8.4.4.
- h. Save
7. Unplug the Keyboard from the USB connection
8. Screen will refresh
9. Restart bike
10. Test connection by signing into bike as a rider