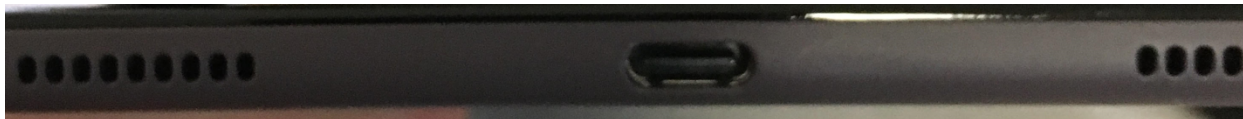


# Using your Galaxy Tab A

## Charging and protecting your Galaxy Tab A from damage

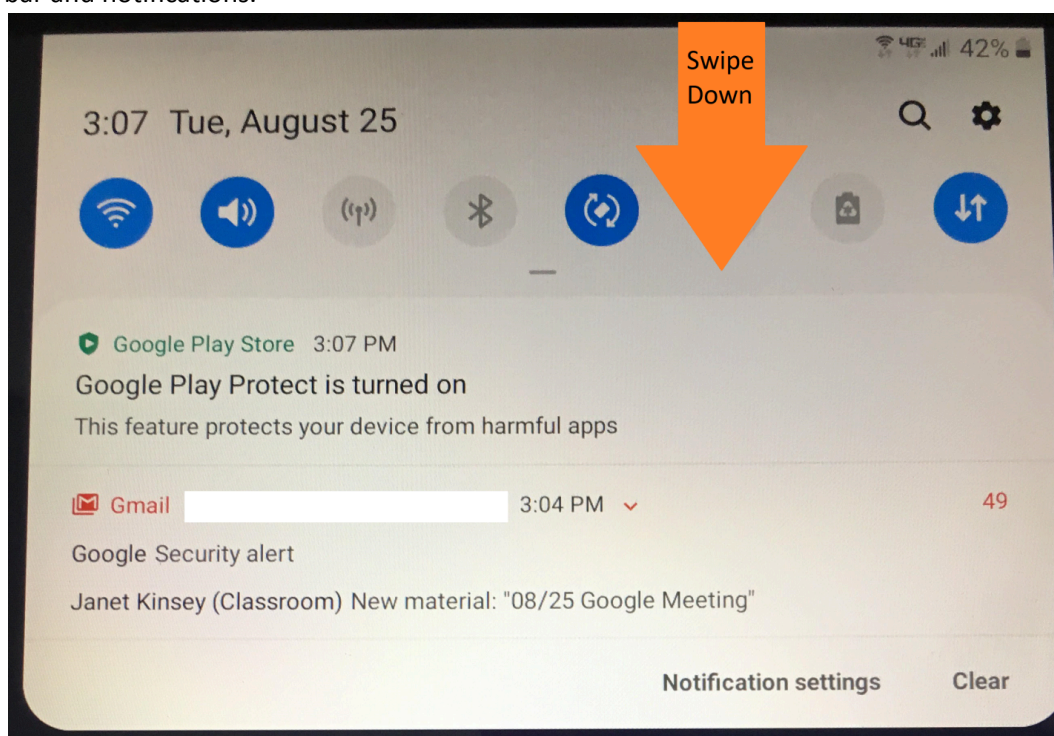
When you receive your Galaxy Tab A make sure you charge it before use as the battery maybe very low., be sure to plug it in and charge it for at least an hour.

The charging cord is a USB type C, this is compatible with other USB Type C cords/chargers. Be aware not using the factory charger can increase charging times.



## Using the Hot Spot function

Once the device is unlocked using the provided code, you will then be able to swipe down from the top to show a button bar and notifications.



**Contacting us:** Technology 520-719-1212, **Email:** [technicalsupport@busd40.org](mailto:technicalsupport@busd40.org)

District office: 719-1200

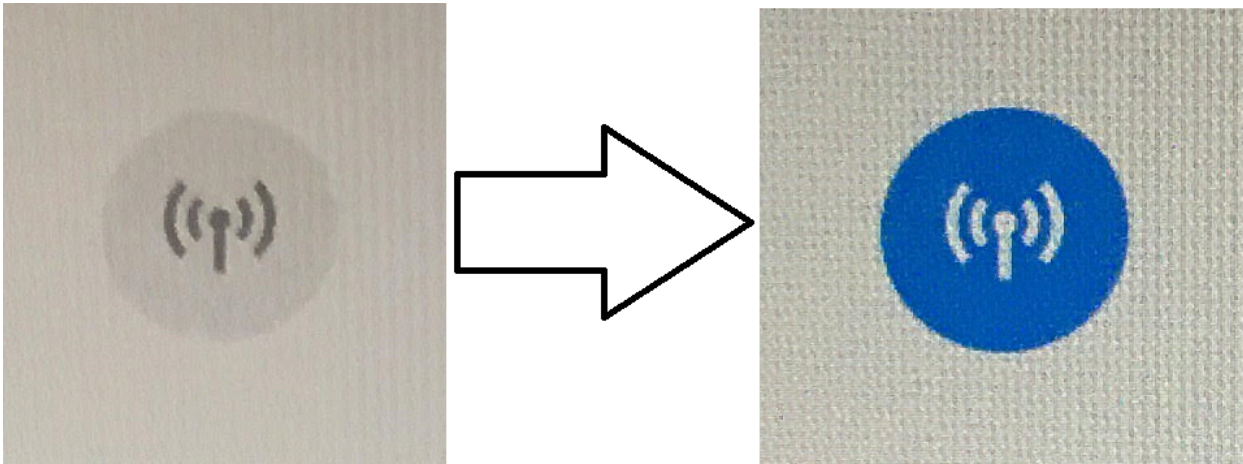
Intermediate: 719-1240

IOMS/IOHS:719-1260

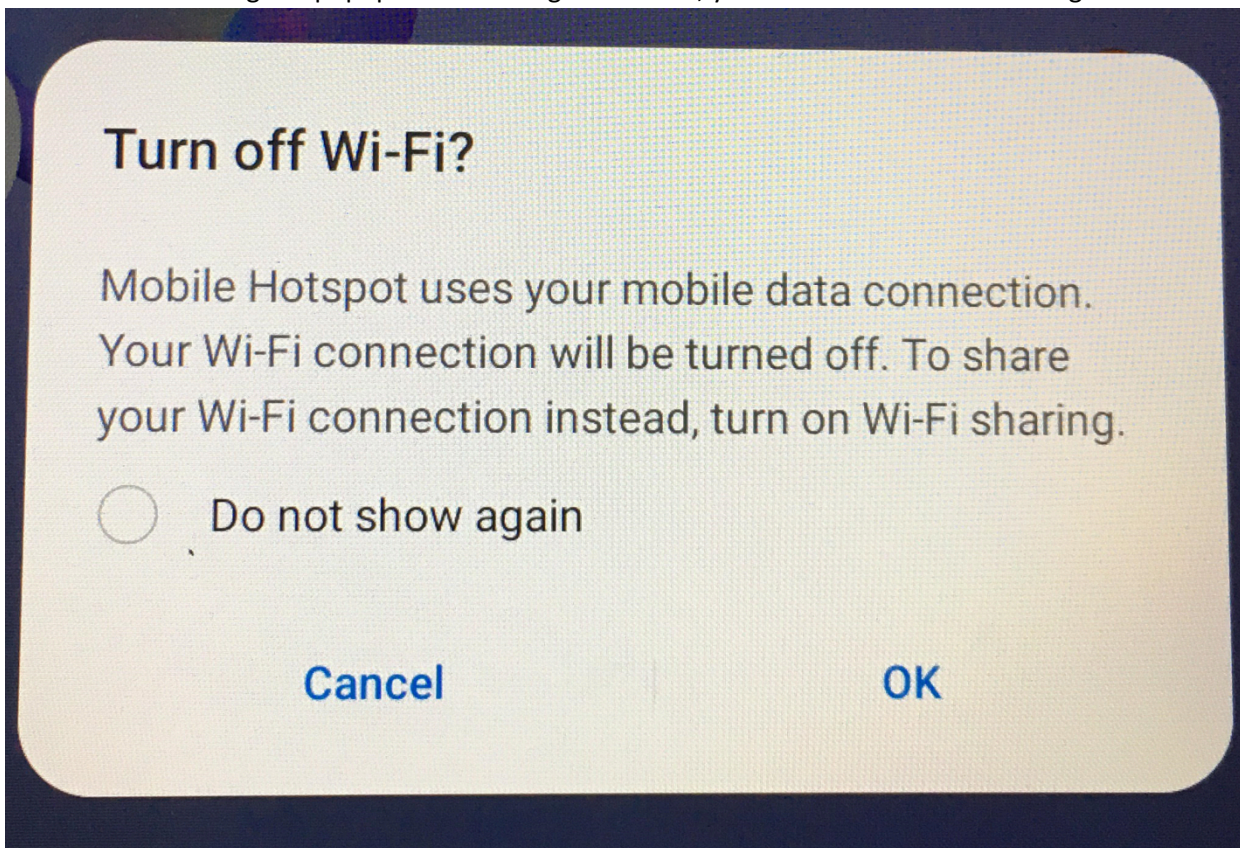
Primary: 719-1230

Secondary: 719-1250

From here you should be able to click on the Antenna icon to activate your Hot Spot feature.



Sometimes A warning will popup about turning off the wifi, you can click the don't show again and then OK.



From here you can log into your chromebook and connect to your tablets hotspot. You will need to look for the wireless network busd406XXX. The last three numbers will change based on the device. The password for the network will be the name but all lowercase.

For example, the network is busd406001 the password would be busd406001.

Apps included in your Galaxy Tab A include:

- Google meet
- Google Classroom
- Google Calendar

**Contacting us:** Technology 520-719-1212, **Email:** [technicalsupport@busd40.org](mailto:technicalsupport@busd40.org)

District office: 719-1200

Intermediate: 719-1240

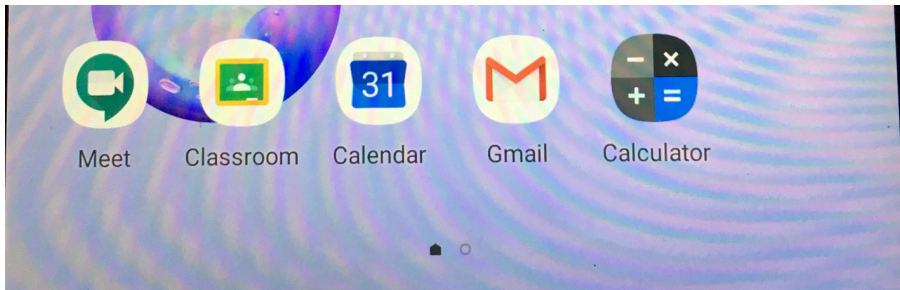
IOMS/IOHS:719-1260

Primary: 719-1230

Secondary: 719-1250



- Gmail
- Calculator
- Google Drive
- Google Slides, Docs, Sheets



They can be accessed from the home page or by sliding up to show all installed apps.

**Contacting us:** Technology 520-719-1212, **Email:** [technicalsupport@busd40.org](mailto:technicalsupport@busd40.org)

District office: 719-1200

Intermediate: 719-1240

IOMS/IOHS:719-1260

Primary: 719-1230

Secondary: 719-1250