



ROADS Advisory Panel Meeting 18<sup>th</sup> January 2022  
15-16 CET / 9-10 am EST / 14-15 UTC  
Teleconference

### 1. Introductions and adoption of agenda

The new co-chairs of the ROADS Advisory Panel, Sandy Starkweather (NOAA, USA) and Lauren Divine (Aleut International Association (AIA)), opened the meeting and welcomed participants to this second meeting of the Panel. There are three new participants on the Panel and they are: Heidi Sevestre who works in the AMAP Secretariat and will provide assistance to Jan Rene Larsen as needed; Helen Joseph who will provide assistance as required; and Christina Goethel who is the new (and first) IASC-SAON Fellow and will contribute to the ROADS process as part of this fellowship appointment. The agenda was adopted (Appendix 1). The list of participants is found in Appendix 2.

### 2. Icebreaker

Jan Rene Larsen led a short icebreaker exercise that served to engage the Panel members. It was a fun opportunity to learn more about each of the members in an informal context.

### 3. SAON ROADS Guiding Principles

Sandy Starkweather outlined the following four guiding principles for the SAON ROADS process. She noted that the Advisory Panel should be considered as the steward of these principles.

1. Indigenous Peoples' equitable partnership and funding for their active participation is critical to ROADS;
2. All aspects of the ROADS process should support broadly shared benefit from the observing and data systems;
3. The ROADS process should complement and integrate, without duplication, the current planning approaches used by existing networks (regional to global), activities and projects; and
4. ROADS should support stepwise development through a flexible and evolving structure that allows grassroots identification of themes, infrastructures and regional foci.

The first two guiding principles were discussed at today's meeting via breakout sessions; and the remaining two principles will be discussed at the February Panel meeting. The breakout sessions focussed on the questions: How do you envision the Advisory Panel implementing or upholding these guiding principles? How can we support the Expert Panels in the application of these guiding principles?

A rapporteur was appointed in each breakout group and presented highlights of discussions. A few of these highlights included the following points.

**Guiding Principle 1.** Indigenous Peoples' equitable partnership and funding for their active participation is critical to ROADS

- Funding for active participation must be included and it should be considered early in the process; the Advisory Panel can play a role in advocating for funding structures that support equity
- Indigenous engagement is not a homogenous concept; there are many layers to Indigenous governance, organizations across scales, and many types of expertise. The Advisory Panel will need to educate itself on this complexity in order to best support the Expert Panels
- There needs to be early conversations about the expectations (e.g. of funding) as well as on mutual expectations; exploring the mutual benefits; exploring what is coming back to communities
- Communication is very important; there are ways where we can adapt our communication to more effectively reach Indigenous groups
- Language is important in this communication; it is difficult across borders but also across groups of people (e.g. backgrounds and interpretation must be considered)
- Two worlds often exist, with misunderstandings between Indigenous Peoples and scientists/researchers even when they appear to be working well together
- There needs to be consideration of both Arctic and non-Arctic country perspectives. Some non-Arctic countries do not have a full understanding of the importance of Indigenous engagement; the Panel needs to convey both the need and the benefits of engagement and partnerships
- Value proposition of participating in the Expert Panels needs to be made very clear; ROADS specifically needs to further develop and refine the value and need for this process (Western colonial scientific process that must be morphed into a more equitable process)
- Education is needed - scientists must be willing to engage in learning about Indigenous Peoples
- There is no "one size fits all" approach or solutions for Arctic Indigenous peoples; context around needs, interests, and governance varies across the Arctic; moving forward will be a learning process that builds on dialogue and engagement

**Guiding Principle 2.** All aspects of the ROADS process should support broadly shared benefit from the observing and data systems

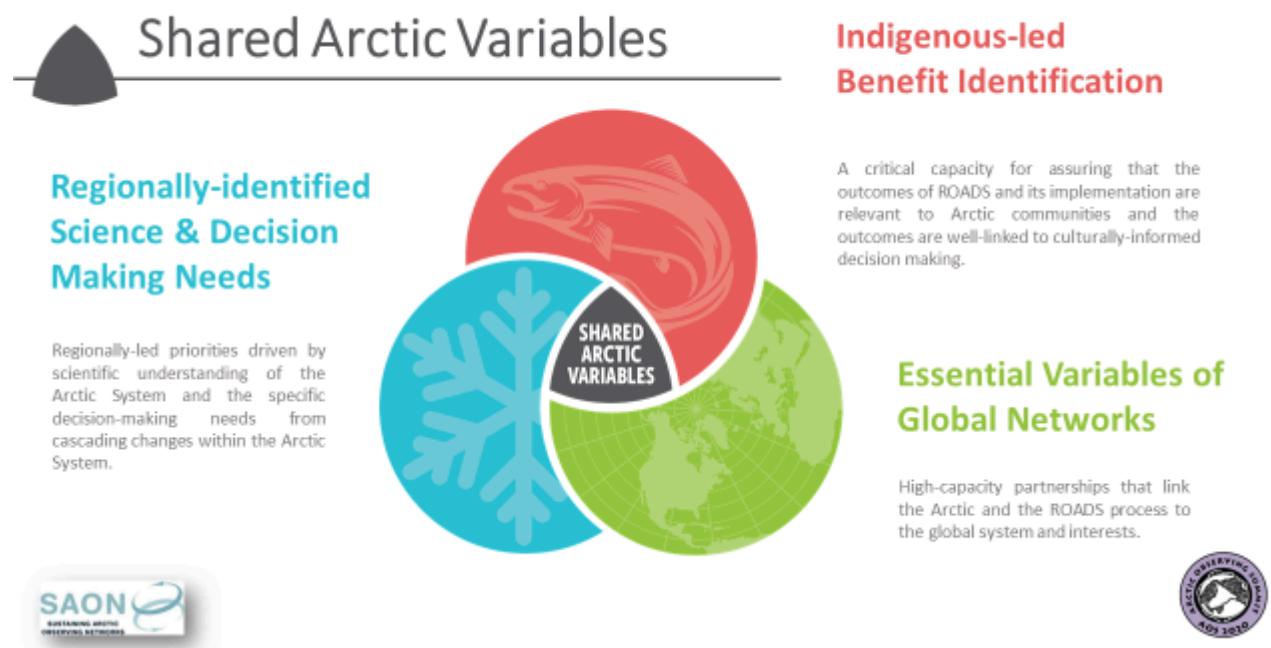
- "Shared benefit" wording should be defined in a manner that is shared amongst the three circles (see Figure 1 below showing Indigenous, Regional and Global circles). Shared benefits implies that benefits come to all three circles of Figure 1; possible examples of observing and data systems of shared benefit might be weather forecasts, permafrost, or sea ice
- Communication around the concept of societal benefits is key
- Advisory Panel's support to the Expert Panels will be important and documentation should be developed to assist with this. Perhaps a template could be designed (modelling on the three circles of Figure 1) to visually guide the Expert Panels on what is expected/desired as a starting point to build upon; useful to develop since everyone is learning together
- Data and observing responsibilities should not be decoupled; need to ensure that observing efforts are translated into useable data; the value chain depends on the end-to-end whole system
- This is clearly a learning process and the Advisory Panel will need to pursue and support necessary dialogues

#### 4. Arctic Observing Summit (AOS) 2022

Jan Rene Larsen encouraged the Panel members to participate in the upcoming Arctic Observing Summit 2022. Registration is now open at <https://arcticobservingsummit.org/summits/aos-2022/>

**5. Next Call** – The next meeting of the ROADS Advisory Panel is scheduled to be held 15<sup>th</sup> February 15-16 CET / 9-10 am EST / 14-15 UTC.

Figure 1: Shared Arctic Variables – this figure of the three bubbles is useful to understand the concept of “shared benefits” of Guiding Principle 2.



## ROADS Advisory Panel Agenda

Teleconference 18th January 2022 15-16 CET / 9-10 am EST / 14-15 UTC

Zoom connection link: <https://cuboulder.zoom.us/j/4105560408> (see also below)

1. Welcome and introductions (*Sandy Starkweather*)

New participants:

- Heidi Sevestre
- Helen C. Joseph
- Christina Goethel

2. Icebreaker: What I like about... (*Jan Rene Larsen*).

3. SAON ROADS guiding principles (*Sandy Starkweather*, 20 min).

The Advisory Panel should be the steward of the guiding principles. The January and the February meetings will discuss the guiding principles. The two first principles will be discussed in break-out groups at the meeting.

Questions to break-out groups:

- How do you envision the Advisory Panel implementing or upholding these guiding principles?
- How can we support the Expert Panels in the application of these guiding principles?

Guiding principles:

5. Indigenous Peoples' equitable partnership and funding for their active participation is critical to ROADS;
6. All aspects of the ROADS process should support broadly shared benefit from the observing and data systems;
7. The ROADS process should complement and integrate, without duplication, the current planning approaches used by existing networks (regional to global), activities and projects;
8. ROADS should support stepwise development through a flexible and evolving structure that allows grassroots identification of themes, infrastructures and regional foci.

The meeting will organise four break-out sessions. Each session will have a rapporteur and report back to the meeting.

Questions to the 20 min]

4. Reporting from break-out groups (*Sandy Starkweather*, 20 min, 5 min from each group)

5. Arctic Observing Summit 2022 (*Jan Rene Larsen*, 10min)

URL: <https://arcticobservingsummit.org/summits/aos-2022/>

Announcement. Participants are encouraged to participate

6. Next call: The next call is planned to be held 15<sup>th</sup> February 15-16 CET / 9-10 am EST / 14-15 UTC.  
May be moved to one week earlier or later.

**Appendix 2**

**Participants ROADS Advisory Panel Meeting**

**January 18th, 2022**

**Advisory Panel Member - Participants**

Amber Budden, University of California, USA (nominated by ADC)  
Victoria Buschman, RNA CoObs  
Joao Canario, University of Lisbon, Portugal & IASC  
Lauren Divine, Aleut International Association (AIA) – ROADS AP Co-Chair  
Ola Grabak, European Space Agency  
Hanna K Lappalainen, PEXX  
Heikki Lihavainen, Arctic PASSION & SIOS  
Sten Lund, Government of Greenland  
Volker Rachold, AWI Germany  
Hanne Sagen, NERSC, Norway/ INTAROS  
Andrea Spolaor, CNR, Italy  
Mikko Strahlendorff, FMI, Finland  
Sandy Starkweather, NOAA, USA – ROADS AP Co-Chair  
Tetsuo Sueyoshi, JAMSTEC/NIPR, Japan  
Maxim Tatarkin, Arctic and Antarctic Research Institute, Russia

**Advisory Panel Member - Regrets**

Christine Barnard, ArcticNet  
Cathy Coon, CBMP/CAFF  
Finn Danielsen, Nordic Foundation for Development and Ecology (NORDECO)

**Advisory Panel Ex-Officio members**

SAON Board Chair – Sandy Starkweather, NOAA, USA  
SAON Secretariat – Jan Rene Larsen, Heidi Sevestre, Helen Joseph (consultant support)  
SAON – IASC Fellow – Christina Goethel  
SAON ADC Chair – Peter Pulsifer