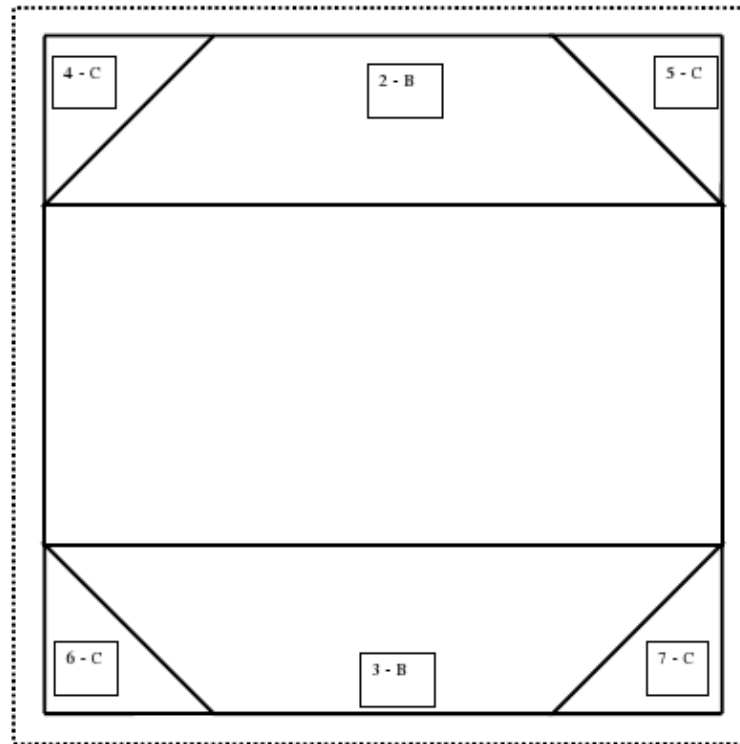


A – 1st Fabric
 B – 2nd Fabric
 C – 3rd Fabric

1-7 is the order in
 which you add your
 fabric to the block



©BitterSweet Baby Quilt Designs, 2011

A – 1st Fabric

B – 2nd Fabric

C – 3

rd

Fabric

1-7 is the order in which you add your fabric to the block

5 4 - C

2 - B

- C

1 - A

6 - C 3 - B

7 - C

©BitterSweet Baby Quilt Designs, 2011