

5th Grade FAQs

Please let us know if you have any other questions!

Absence/Appointments

Please call the attendance office, email Trish Rudquist, and/or the classroom teacher if you know your student will be absent, coming late, or leaving early. Please connect with the classroom teacher and the office for vacations and planned absences.

(970) 488-7600

prundqui@psdschools.org

Drop off/Pick up

The students can be dropped off at 7:15 am. Please don't drop off any earlier! The students will come into the room at 7:40 when they arrive. In the afternoon we will start calling names for pick up at 2:20. The students will stay with their classroom teachers either inside or outside their classroom.

Lunch/Snacks/Water

PSD is offering FREE breakfast and lunch for students.

[Breakfast and Lunch Menu](#)

Your child will need to bring a snack everyday when they are at school. If you are able to provide extra snacks for the classroom we will always take donations! Prepackaged items are best! (Cheez-Its, goldfish crackers, granola bars, ect.)

Your child will also need to have a refillable water bottle.

Specials

We will have specials everyday 8:30-9:15

Campbell Specials

Monday- P.E. or Art

Tuesday- PE

Wednesday- Art

Thursday- Library

Friday- Music

Pfeiffer Specials

Monday-

Tuesday-

Wednesday-

Thursday-

Friday-

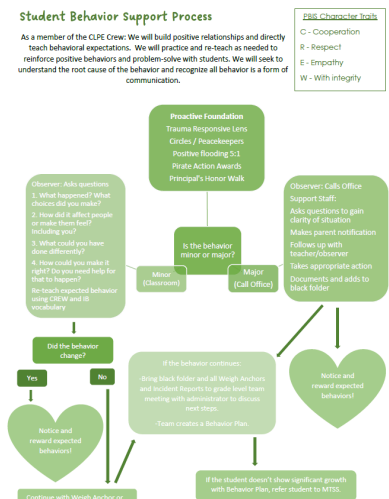
Friday Letter/E-Mail Communication

There will be a weekly letter that will be sent to the e-mail addresses you have provided for us through synergy. Please let us know if you are not receiving these emails. This will be a chance for us to inform you what's happening in 5th Grade.

How will you address social and emotional needs and behavior mistakes?

We strive to provide a safe, caring environment at CLPE. If your child is not thriving, please reach out. We can discuss ways to better meet their unique needs. We also have a fabulous counseling team here at CLPE and we can get you connected.

We will be using the Sources of Strength program to help support students with conflict resolution and showing appreciation. We will also be supporting students with Restorative Justice techniques. We understand students are learning! We will work as a team (Parents, School, Students) to solve problems!



How can I reach you?

Please feel free to reach out and contact us anytime at:

apfeiffer@psdschools.org

970-488-7615

mcampbell@psdschools.org

970-672-1486 (Call or Text)

Principal: Melissa Cripe

mcripe@psdschools.org

Vice-Principal: Colleen Worman

cworman@psdschools.org