

Job Config GUI - Interface Guide

Introduction:

JobConfig is a program made to simplify the job creation and modification process by giving it a GUI (Graphical User Interface). This GUI will allow you to modify the job steps found within the JMD through an easy to use visual interface as opposed to modifying the file directly.

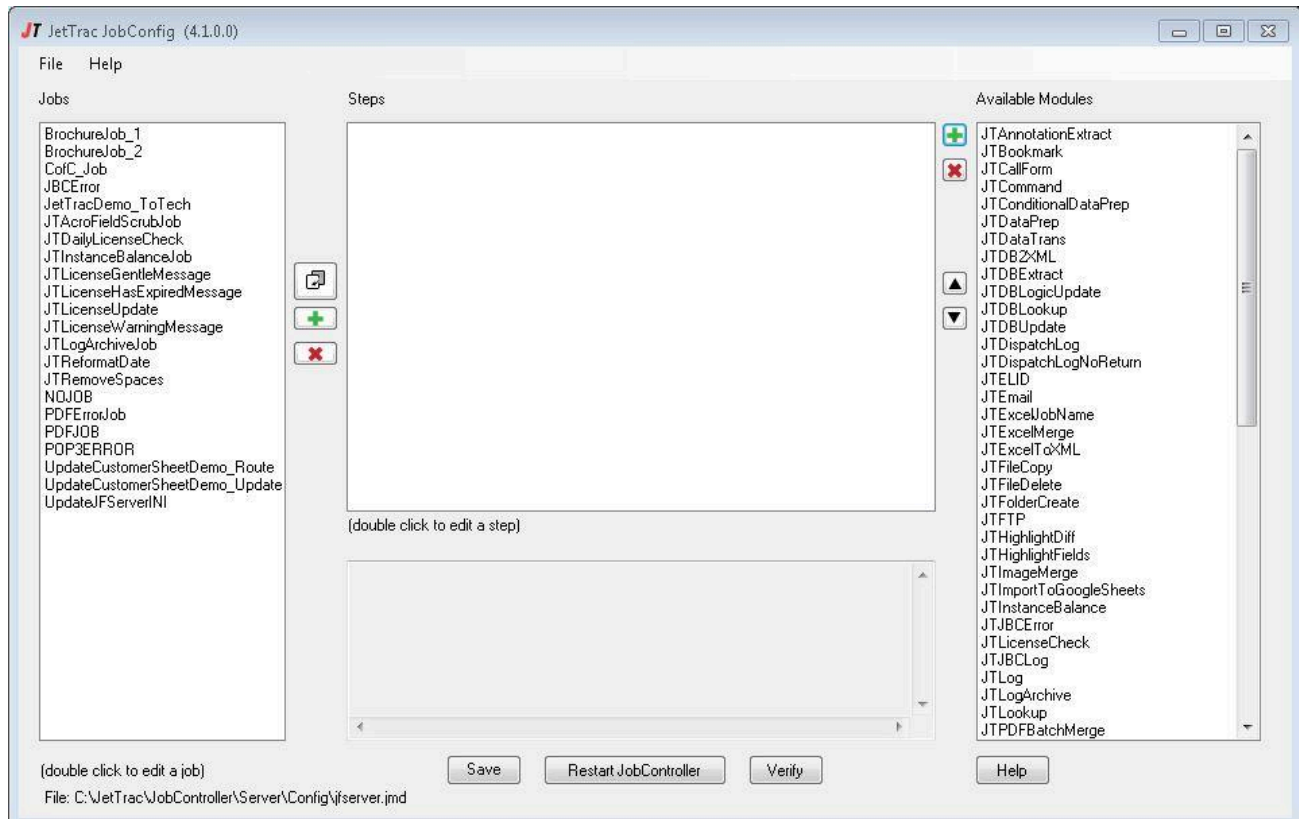
Please note that any files edited while setting up JetTrac JobConfig should be edited using Notepad or Notepad++. Do not use Microsoft Word or Wordpad as these text editors will add formatting that will interfere with the program reading the files.

How to run JetTrac JobConfig:

To run the program, you will need to have the following files located in the same folder:

- JobConfig.exe
- ExitHandler.dll
- IniFileGui.dll
- GuiGrid.dll
- JobConfig.ini
- Run JetTrac JobConfig.bat

The .bat file is used to run the executable. Simply double-click this file (or right-click > Run as Administrator depending on your computer's security settings) to open the JetTrac JobConfig GUI.



JobConfig GUI Interface:

The JetTrac JobConfig GUI contains three columns, two tabs along the top of the window, and four buttons. By default when JetTrac JobConfig opens it will use the data from the JMD located at C:\JetTrac\JobController\Server\Config\jfservice.jmd. The two tabs across the top of the window are File and Help.

- File:
 - New – This option is used to create a new JMD to be edited using the JobConfig GUI.
 - Open – Use this option to browse for and use a preexisting JMD.
 - Save – This saves any changes made to the current JMD. Please also note that you must restart the JobController service to publish the changes.
 - Save As – This option allows you to save the JMD somewhere other than the default location. This can be used to save changes you don't want to overwrite in the default JMD.
 - Exit – This closes JetTrac JobConfig.
- Help: This tab contains the About link which displays the copyright information for JetTrac JobConfig.

In addition to the tabs across the top of the GUI, there are three columns. These columns are used to add new jobs and edit the steps for each job. The left column is the list of jobs already saved into the JMD, by default there should already be JBCError, NOJOB, and PDFJOB. These three jobs should not be deleted or edited in any way. The center column will display a list of job steps when a job from the left column is selected. Finally, the right column is list of JetTrac modules available to you to add to your jobs as job steps.

Within the first column, to add a new job, click on the green plus icon then enter a job name (this name must be unique as no two jobs can have the same name). In addition, you can click on the white paper icon to copy the steps from a highlighted job and rename it to a different job name. This is useful if you wish to have a second job that is similar to the first but with minor differences. Lastly, there is the red "X" icon that will delete a selected job.

Once you have a job created and selected you can begin adding modules to the job to set up the job steps. To do this, select the module from the right column that you wish to add and click on the green plus icon next to the right column. Alternatively, you can double-click on the module to add it to the job steps column in the middle of the GUI. Once you have multiple job steps added to the middle column from the right column, you can use the up and down arrow buttons to move a selected job step up or down the list or the red "X" button to remove a selected job step from the center column.

In addition to the center column containing the list of modules added as job steps in a specific job, there is also a read-only text window at the bottom which displays any comments for the job step that is currently selected. The intent of this is so that you can add a user friendly description of what the job steps does and see it as you are looking at the list of steps in the job. You add these comments in the Job Step Configuration window which we will go over next.

Finally, the last items in the main window's interface are the four buttons on the bottom.

- Save - This button when clicked will save any changes you made to jobs through the GUI interface. Please note that in order for these changes to take effect on your server you will also need to Restart JobController.
- Restart JobController - This button will reload the jfserver.jmd and jfserver.ini files so that any changes made to either will take effect.
- Verify - When clicked, this button will check the input and output files from the currently selected job and make sure that each input has been created as an output in a previous job step. If a file has not been created by the job previous to it being used as an input file, you will see an alert. This is useful when troubleshooting if your input and output files line up correctly throughout a job. Please note however, that there are times where you may wish to input a file that was not created directly by the job and in this case, while your input may be correct for what you are attempting to set up, this button will give you a false positive alert.

- Help - When you have a module selected in the right column of Available Modules you can click on this button to bring up the help article online. To change the location of the help articles, you will need to adjust the jobconfig.ini configuration file. To do this, please refer to our guide on Job Config GUI - Adding/Adjusting Modules.

Job Step Configuration:

When the job steps you wish to run in a job are added to the center column in the order you wish to run them, you can then work on setting up each job step. You can double-click the job step in the center column to bring up the Job Step Configuration window.

Job Step Configuration

Job Name: BrochureJob_2

Module: JTDDataPrep

Printer: * Stop On Error: Yes

Config file: C:\JetTrac\Foms\BrochureJob\Config\JTDDataPrep_Config.ini [Edit]

n/a: * [Edit]

n/a: * [Edit]

n/a: * [Edit]

Input XML: * [View]

Output XML: C:\JetTrac\Foms\BrochureJob\Output\OutputFromDataPrep.xml [View]

(double click on fields above to browse for file)

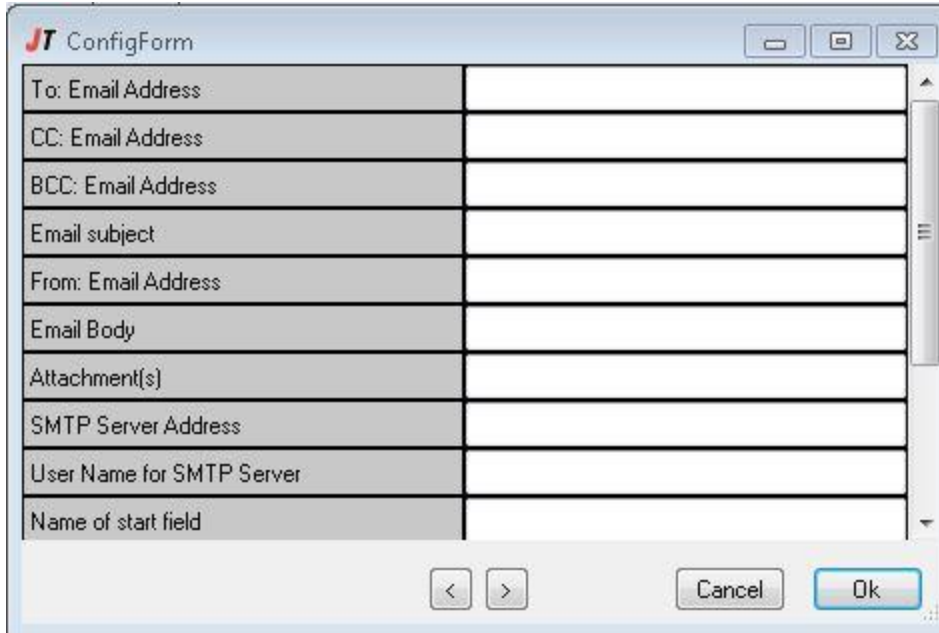
Comment: [Text Area]

(required fields in red)

[Cancel] [Ok]

In this window you will be able to specify the path to the files necessary to run the JetTrac module used in the job step you are configuring. In each field you can simply enter in a fully qualified file path to the file that you wish to use or double-click within the field to browse for the file on your local machine. Each JetTrac module has a different set of variables it needs to have defined in order to run. Any fields with labels highlighted in red are required and any fields with the label “n/a” should not have any value as they are not used for this module. There is also a Yes/No dropdown titled Stop On Error. This dropdown sets this specific job step to either stop processing the job when an error is encountered on this step, or to continue on with the next job

step. At the bottom of the window you will see a Comment field. This field is used to add a description to the job step or a reminder of what exactly the job step is doing (ex: Email the dispatch package to the technician.). In addition, you can click the edit button once you have entered in a path to that file to edit the file itself in your default text editor (or PDF reader if the file is a PDF), or in the case of an edit button next to a configuration file, if you have a meta data file set up for the module you will see another window to edit the configuration file.



The screenshot shows a window titled "JT ConfigForm" with a standard Windows-style title bar (minimize, maximize, close buttons). The window contains a table with 10 rows and 2 columns. The first column contains labels for various email-related fields, and the second column contains empty text boxes for user input. At the bottom of the window, there are three buttons: a left arrow, a right arrow, and a "Cancel" button, followed by an "Ok" button.

Field Label	Input Field
To: Email Address	
CC: Email Address	
BCC: Email Address	
Email subject	
From: Email Address	
Email Body	
Attachment(s)	
SMTP Server Address	
User Name for SMTP Server	
Name of start field	

Once you have the required information filled out in the Job Step Configuration window, you can click on Ok to set the changes.

Additional Notes:

- In order to change/add modules within the JobConfig GUI please refer to our training guide on Job Config GUI - Adding/Adjusting Modules.
- Any changes made to JobConfig.ini must be saved and JobConfig must be closed and reopened to see the changes. Also, when setting up jobs using the JetTrac JobConfig GUI make sure that the JMD is not currently open.
- Within the Job Step Configuration window of the GUI, you will notice that while some lines have Edit buttons, others have a button labeled View. The View buttons are on lines that the input and output files are typically entered in, and as these files are typically created on the fly, you should not edit them this way. You can, however, view the files (if they exist already) as the button states.

- In addition to being able to browse for an existing file, if you are setting up a module that meets the following criteria you can actually create a configuration file for the module through the GUI:
 - The module must have a meta data file associated with it to allow you to edit the configuration file through the GUI.
 - The file path you wish to put the configuration file must exist and a file with the same name as the one you wish to create cannot exist at that file path.
 - You have to know the fully qualified file path to the folder in which you wish to place the configuration file.

To create this configuration file (assuming the above criteria are met) simply type in the fully qualified file path you wish to create the file at as well as the name of the file and extension. You can then click on the Ok button to create the file. Once you have done this, you can use the Edit button to edit the file.

- The ConfigForm pop-up which is used to edit a job step configuration file (only for modules that have a meta data file set up) can be resized to allow for more space to enter data.