

Gorham School Department
Artificial Intelligence Principles and Beliefs

Introduction and Connection to the [District's Mission, Vision, and Core Beliefs](#):

The Gorham Schools embrace AI as a collaborative tool to better support and enhance the effectiveness of our educators, not replace them. AI mimics human cognitive functions like learning and problem-solving, introducing innovative tools in education. We envision AI empowering both teachers and students, acting as a supportive guide while respecting individual control. It will foster diverse exploration, personalize learning journeys, and spark innovation in the safe learning environments that we create.

Continued Commitment:

Recognizing the potential pitfalls of AI in education, Gorham Schools pledges responsible use. Equity, fairness, and transparency will guide our approach as we embrace AI as a tool that complements, not replaces, human connection. New AI tools hold promise but will be evaluated critically and used alongside the irreplaceable wisdom of educators. Protecting data is a top priority, with staff serving as champions for student information protection. We believe the greatest potential of AI lies in amplifying human connection. While AI can personalize learning, human relationships fostered by educators truly ignite the spark of learning and ensure every student thrives.

Intended Use:

AI use will adhere to our student and staff technology policies, ensuring alignment with educational purposes and curriculum. Standard behavior and communication rules apply both digitally and in person, with students required to follow staff instructions. The intended use will evolve alongside AI in education, incorporating stakeholder feedback through regular reviews of its use via our school's leadership teams.

AI Implementation Framework for Gorham Schools:

The Gorham Schools understand that "one-size-fits-all" doesn't apply to AI in education. We'll utilize a vetting framework based on best practices to ensure AI aligns with our core values. This framework outlines a structured approach to implementing AI solutions within Gorham Schools.

Phase 1: Identifying Needs and Alignment

- **Challenge Definition:** Clearly define the specific educational challenge or problem AI intends to address within Gorham Schools.
- **Alignment Assessment:** Evaluate if the proposed AI initiative aligns with the established goals, values, and educational philosophies of Gorham Schools.

Phase 2: Needs Assessment

- Students: How can AI personalize the learning experience and cater to individual needs?
- Educators: How can AI tools assist teachers with administrative tasks, content delivery, and progress monitoring?
- Administrators: How can AI facilitate data-driven decision-making and improve school operations?

Phase 3: Safety and Privacy

- **Data Protection:** Ensure the AI application safeguards user data through robust security measures.
- **Data Privacy Compliance:** Verify that the application adheres to data privacy best practices and offers users control over how their data is used.
- **Child Safety:** Guarantee that the AI application prioritizes the well-being and safety of children and teenagers, regardless of its intended audience.

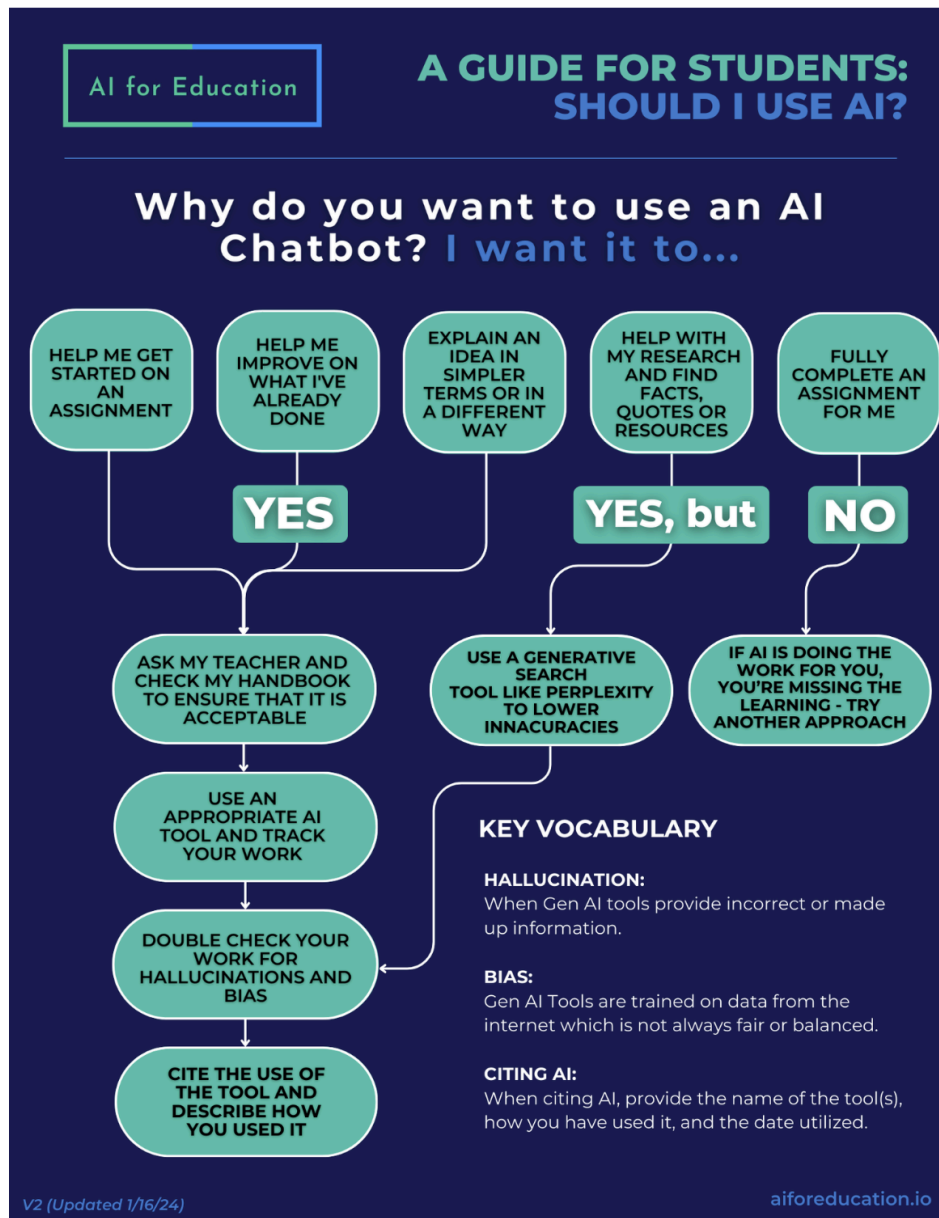
Phase 4: Monitoring and Maintenance

- **Performance and Accuracy:** Continuously monitor the effectiveness and accuracy of AI solutions.

- **Fairness and Bias:** Develop clear procedures for identifying and addressing potential biases or errors within the AI systems.
- **User Training:** Provide ongoing training and support to educators, administrators, and students to ensure responsible and ethical use of AI tools.

By following this framework, Gorham Schools can ensure that AI implementation addresses educational needs and prioritizes responsible use and the well-being of its entire school community.

The flowchart provided by *AI for Education* (2023): [Student Guide for AI Use](#) empowers students to use AI wisely and responsibly. Gorham School staff and students will ensure responsible, effective, and ethical integration of AI to enhance teaching, learning, and decision-making by following these guidelines and carefully considering the unique needs of educational settings.



Resources:

[Common Sense Media AI Framework](#)

[Common Sense Media - Understanding the Impact of AI on Our Kids](#)

[AI for Education](#)

Draft #1 12/2023

Draft #2 2/2024

Draft #3 3/2024

Draft #4 4/2/2024

Working Draft #1 7/2/24