

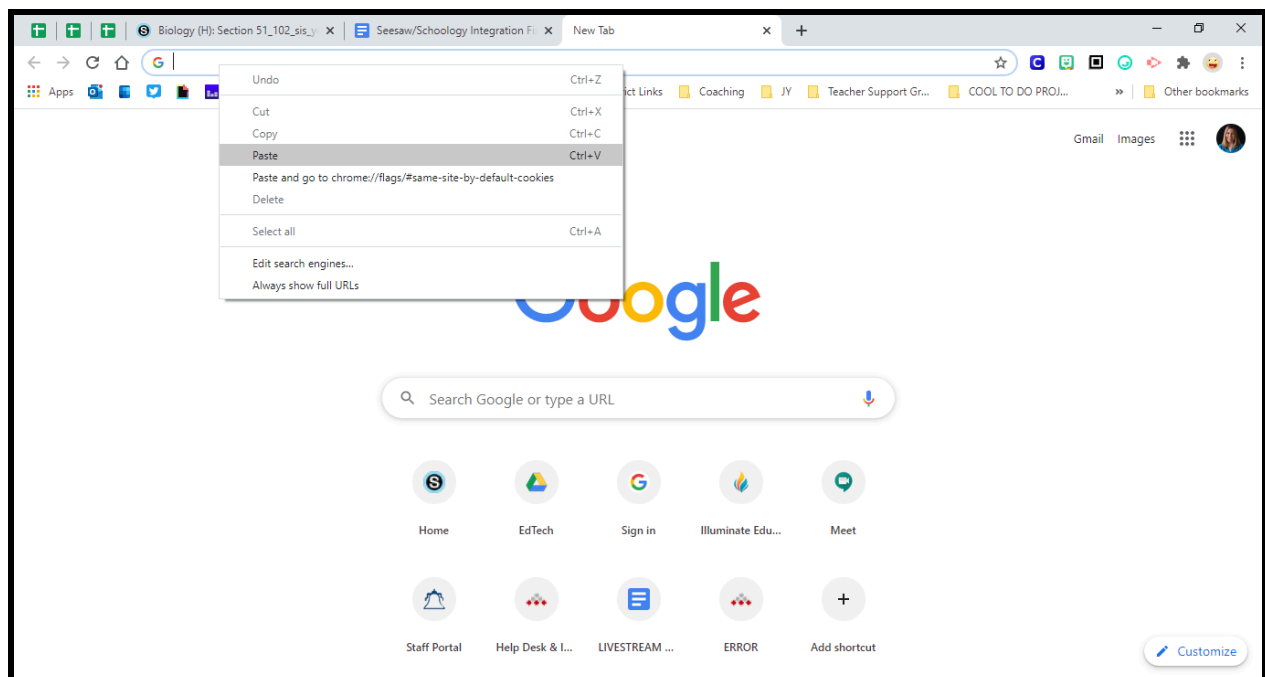
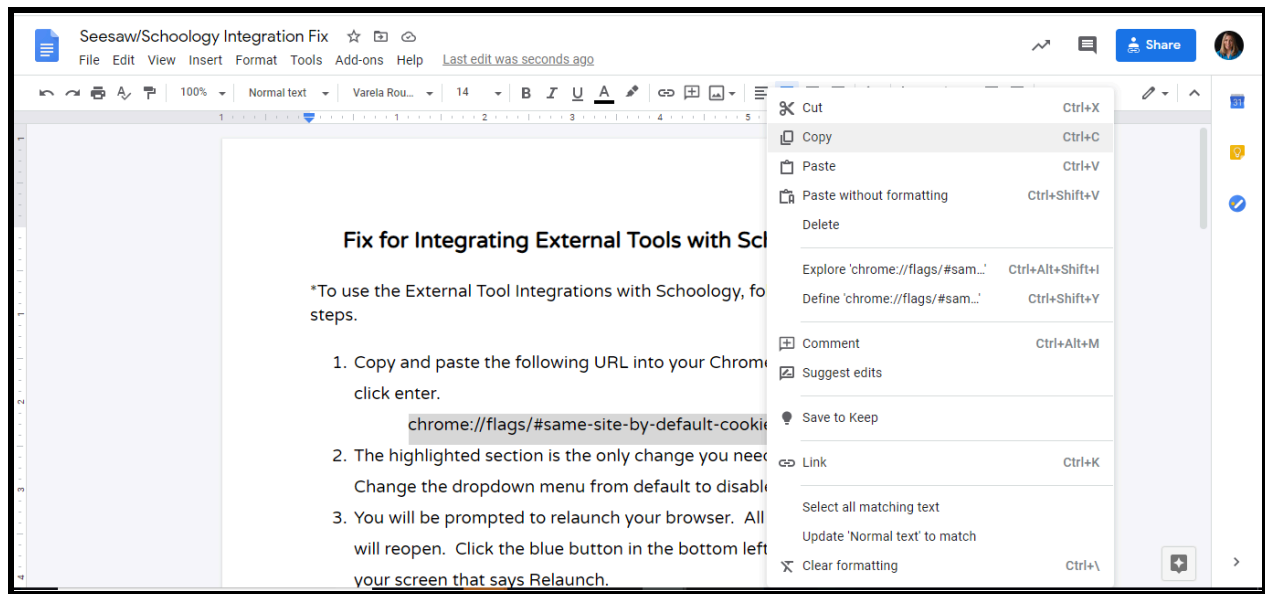
Fix for Integrating External Tools with Schoology

VIDEO DIRECTIONS

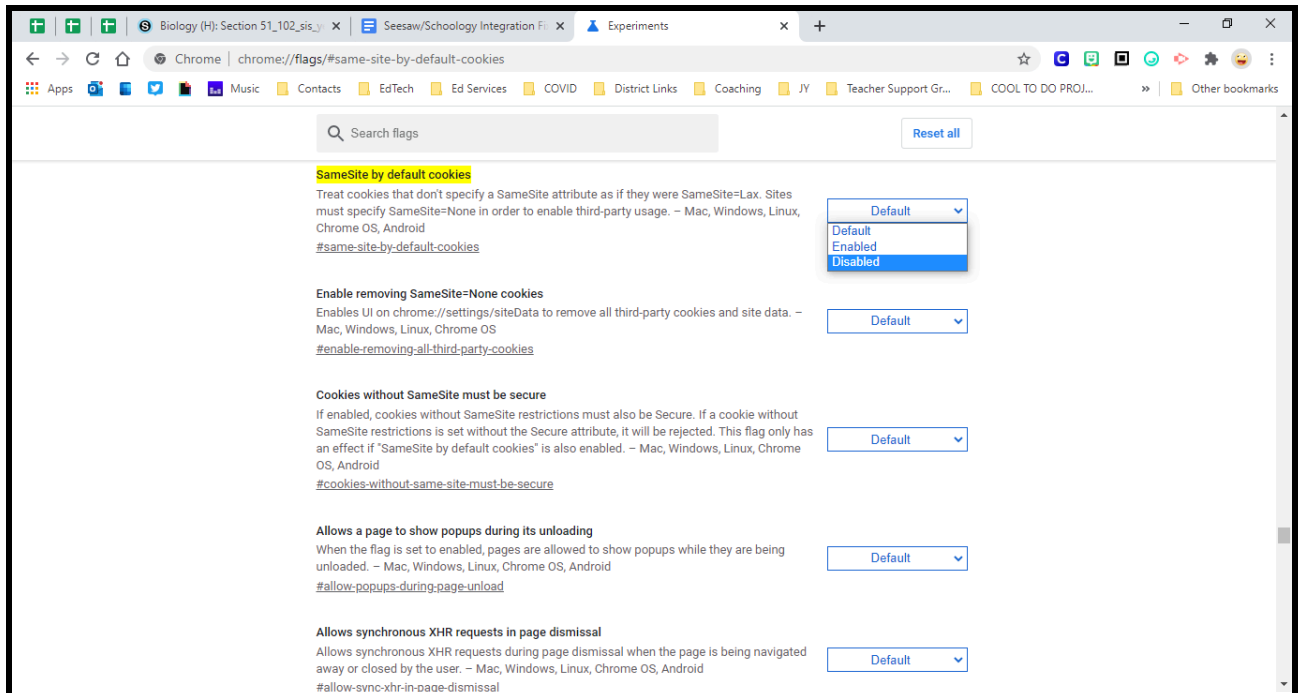
*To use the External Tool Integrations with Schoology, follow these steps.

1. Highlight the URL. Right click and select Copy and then open a Chrome browser and paste the URL into the omnibox. Click enter.

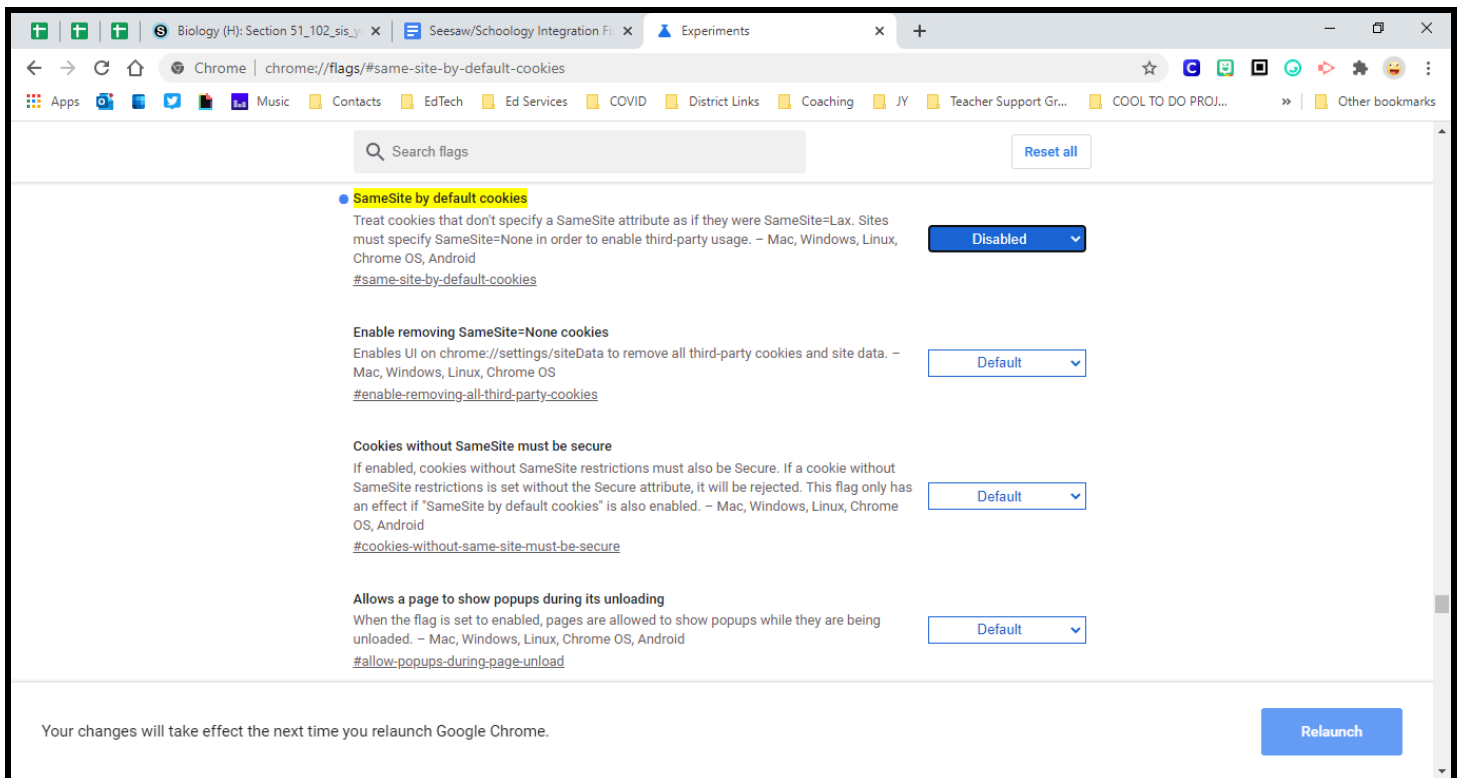
`chrome://flags/#same-site-by-default-cookies`



- The highlighted section is the only change you need to make. Change the dropdown menu from default to disable.

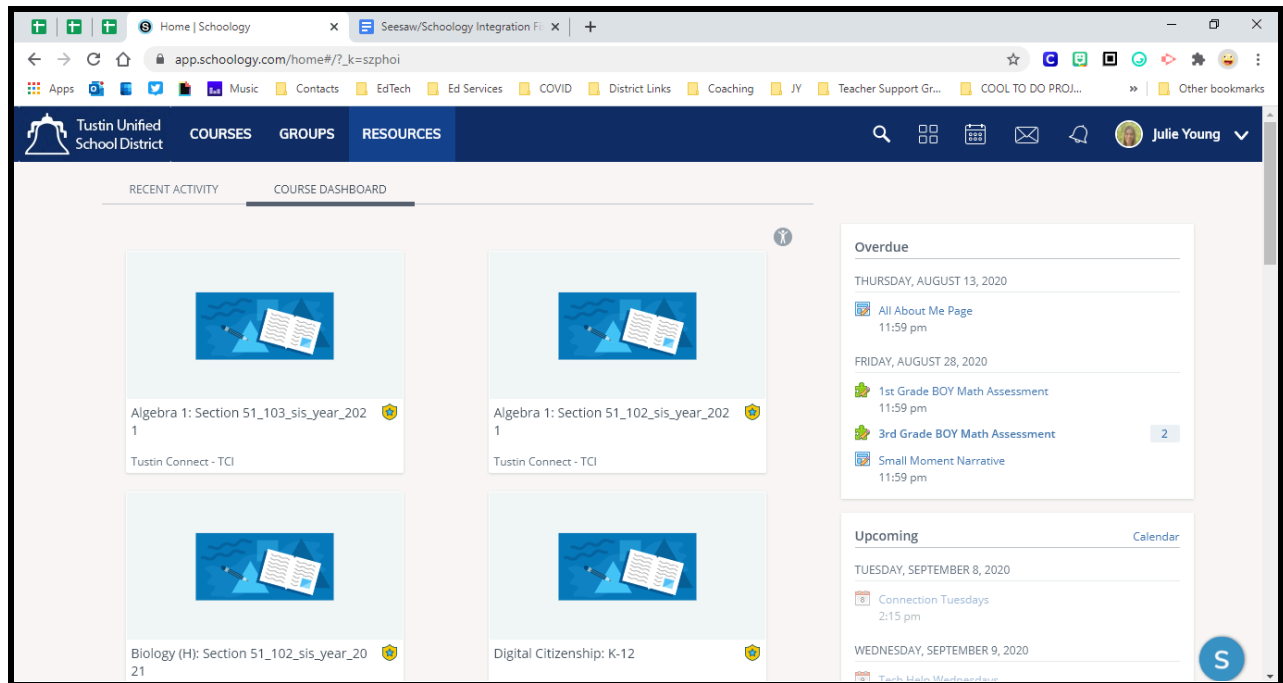


- You will be prompted to relaunch your browser. All open tabs will reopen. Click the blue button in the bottom right corner of your screen that says Relaunch.



*You are now able to successfully integrate the External Tools into Schoology.

1. Log into tustin.schoology.com with your mytusd information and click on the course in Schoology that you would like to integrate with and external tool.



2. Click add assignment > add file/link/external tool > choose the tool you'd like to add from the dropdown menu > Title your link so your students will recognize which tool it is > click to enable grading, if you wish, and choose the category you would like it to sync with > click submit

Browser tabs: Biology (H): Section 51_102_sis_y... Seesaw/Schoology Integration Fi...
Address bar: app.schoology.com/course/2630314750/materials#folderexpanded=
Breadcrumbs: Tustin Unified School District COURSES GROUPS RESOURCES
Course Title: Biology (H): Section 51_102_sis_year_2021
User: Julie Young

Left sidebar (Course Options):

- Materials
- Updates
- Gradebook
- Grade Setup
- Mastery
- Badges
- Attendance
- Members
- Analytics
- Workload Planning
- Aeries SIS
- Conferences

Main Content Area:

- Buttons: Add Materials, Options
- Dropdown menu (Add Materials):
 - Add Folder
 - Add Assignment
 - Add Test/Quiz
 - Add Assessment
 - Add File/Link/External Tool
 - Add Discussion
 - Add Page
 - Add Media Album
 - Add Package
 - Import from Resources
- Google Assignments
- All Materials
- Upcoming - Add Event
- No upcoming assignments or events

Footer: https://app.schoology.com/course/2630314750/materials/documents/add/docum...

Browser tabs: Biology (H): Section 51_102_sis_y... Seesaw/Schoology Integration Fi...
Address bar: app.schoology.com/course/2630314750/materials#folderexpanded=
Breadcrumbs: Tustin Unified School District COURSES GROUPS RESOURCES
Course Title: Biology (H): Section 51_102_sis_year_2021
User: Julie Young

Left sidebar (Course Options):

- Materials
- Updates
- Gradebook
- Grade Setup
- Mastery
- Badges
- Attendance
- Members
- Analytics
- Workload Planning
- Aeries SIS
- Conferences

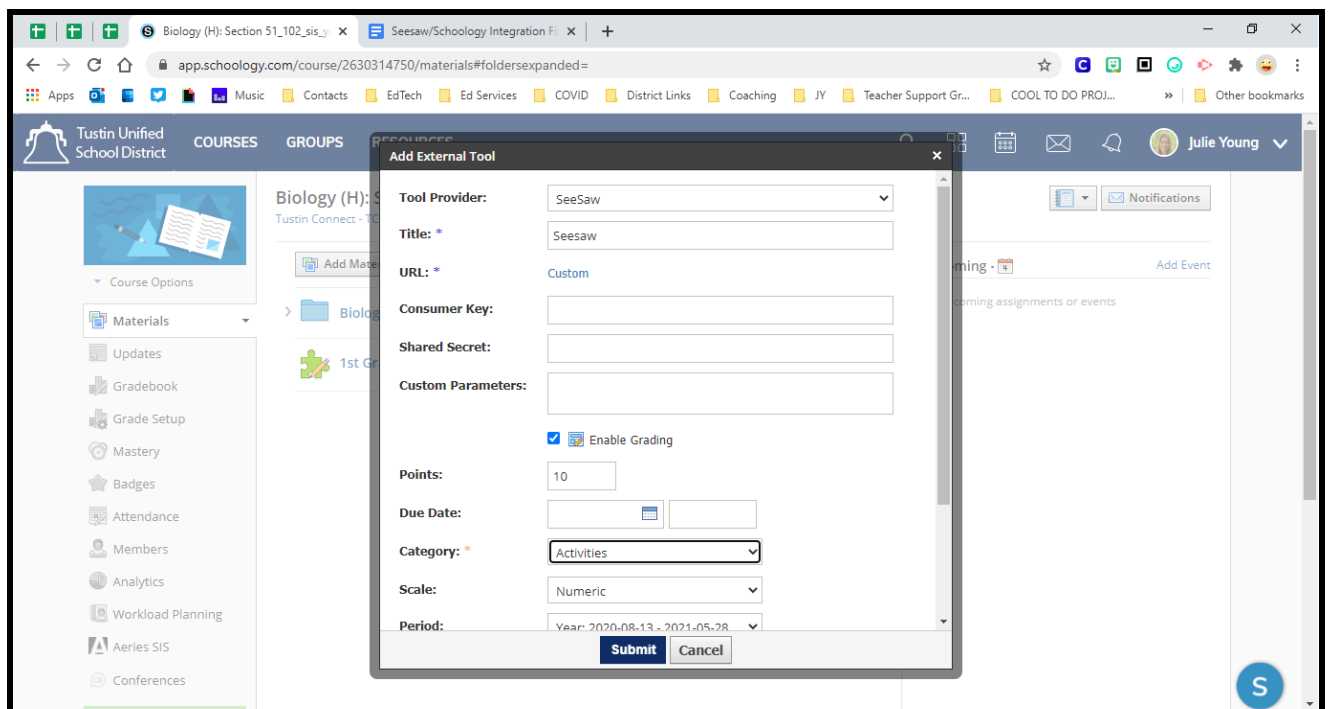
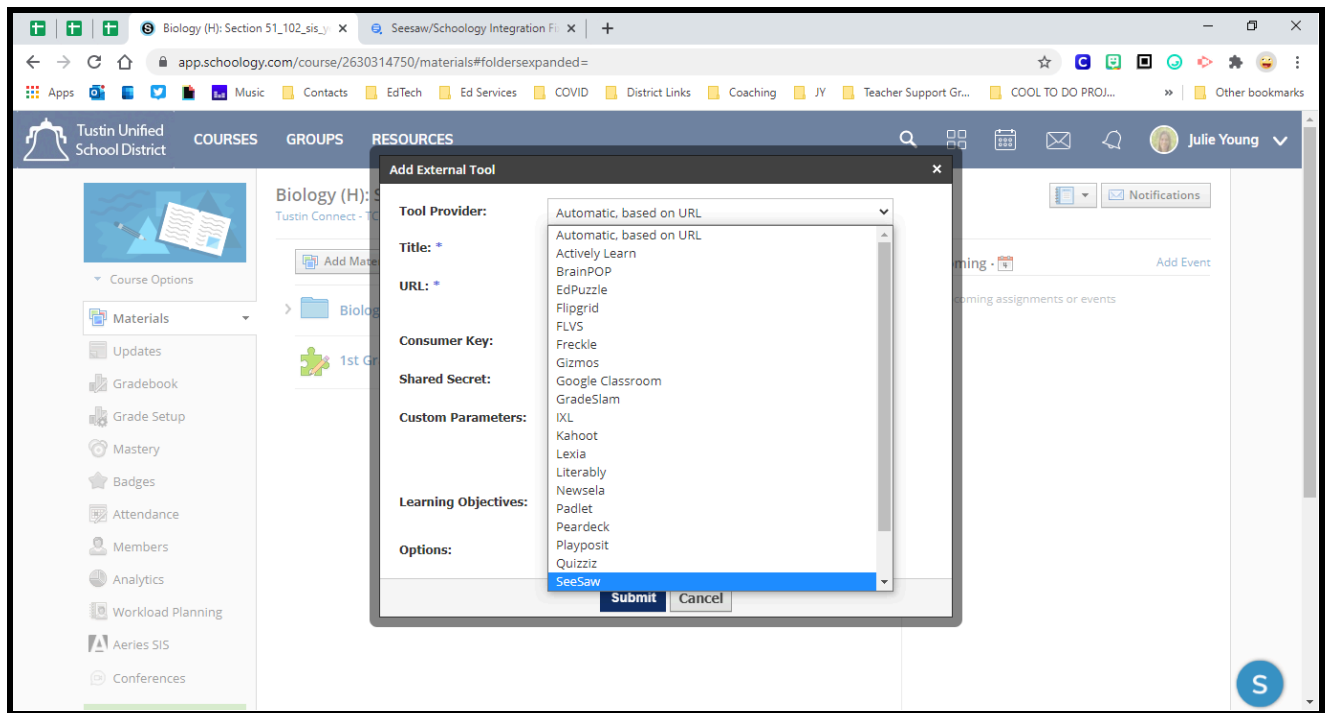
Main Content Area:

- Buttons: Add Materials, Options
- Dropdown menu (Add Materials):
 - Add Folder
 - Add Assignment
 - Add Test/Quiz
 - Add Assessment
 - Add File/Link/External Tool
 - Add Discussion
 - Add Page
 - Add Media Album
 - Add Package
 - Import from Resources
- Google Assignments
- All Materials
- Upcoming - Add Event
- No upcoming assignments or events

Modal Window: Add File/Link

- File
- Link
- External Tool

Footer: https://app.schoology.com/external_tool/course/2630314750/link/add



3. Click on the link that you titled. The external tool will open inside of Schoology. You will be prompted to sign in once, and so will your students. After signing in once, the connection is made and they should not have to sign in again.

Browser tabs: Biology (H): Section 51_102_sis_y... Seesaw/Schoology Integration Fi...
Address bar: app.schoology.com/course/2630314750/materials#folderexpanded=
Breadcrumbs: Apps | Music | Contacts | EdTech | Ed Services | COVID | District Links | Coaching | JY | Teacher Support Gr... | COOL TO DO PROJ... | Other bookmarks

Tustin Unified School District COURSES GROUPS RESOURCES Julie Young

Biology (H): Section 51_102_sis_year_2021

Tustin Connect - TCI

Course Options

Materials

- Updates
- Gradebook
- Grade Setup
- Mastery
- Badges
- Attendance
- Members
- Analytics
- Workload Planning
- Aeries SIS
- Conferences

Add Materials Options

All Materials

- Biology v20 (GS)
- 1st Grade BOY Math Assessment
- Seesaw

Upcoming

No upcoming assignments or events

Add Event

https://app.schoology.com/external_tool/1407558665/launch

Browser tabs: Seesaw | Schoology Seesaw/Schoology Integration Fi...
Address bar: app.schoology.com/external_tool/1407558665/launch

Tustin Unified School District COURSES GROUPS RESOURCES Julie Young


Biology (H): Section 51_102_sis_year_2021

Seesaw

Course Options

Materials

- Updates
- Gradebook
- Grade Setup
- Mastery
- Badges
- Attendance
- Members
- Analytics
- Workload Planning
- Aeries SIS
- Conferences

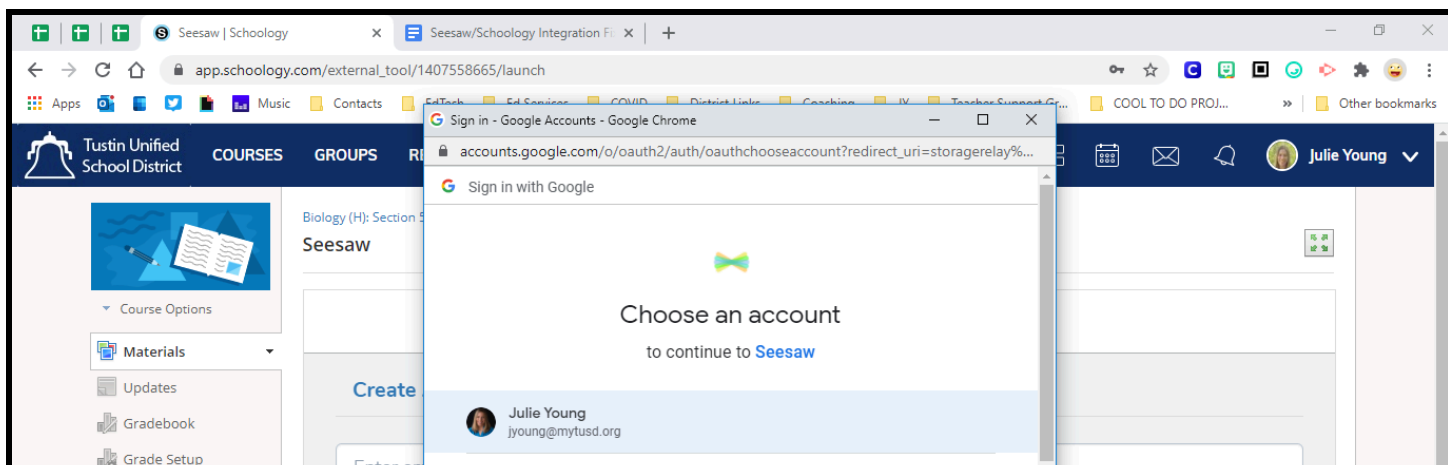
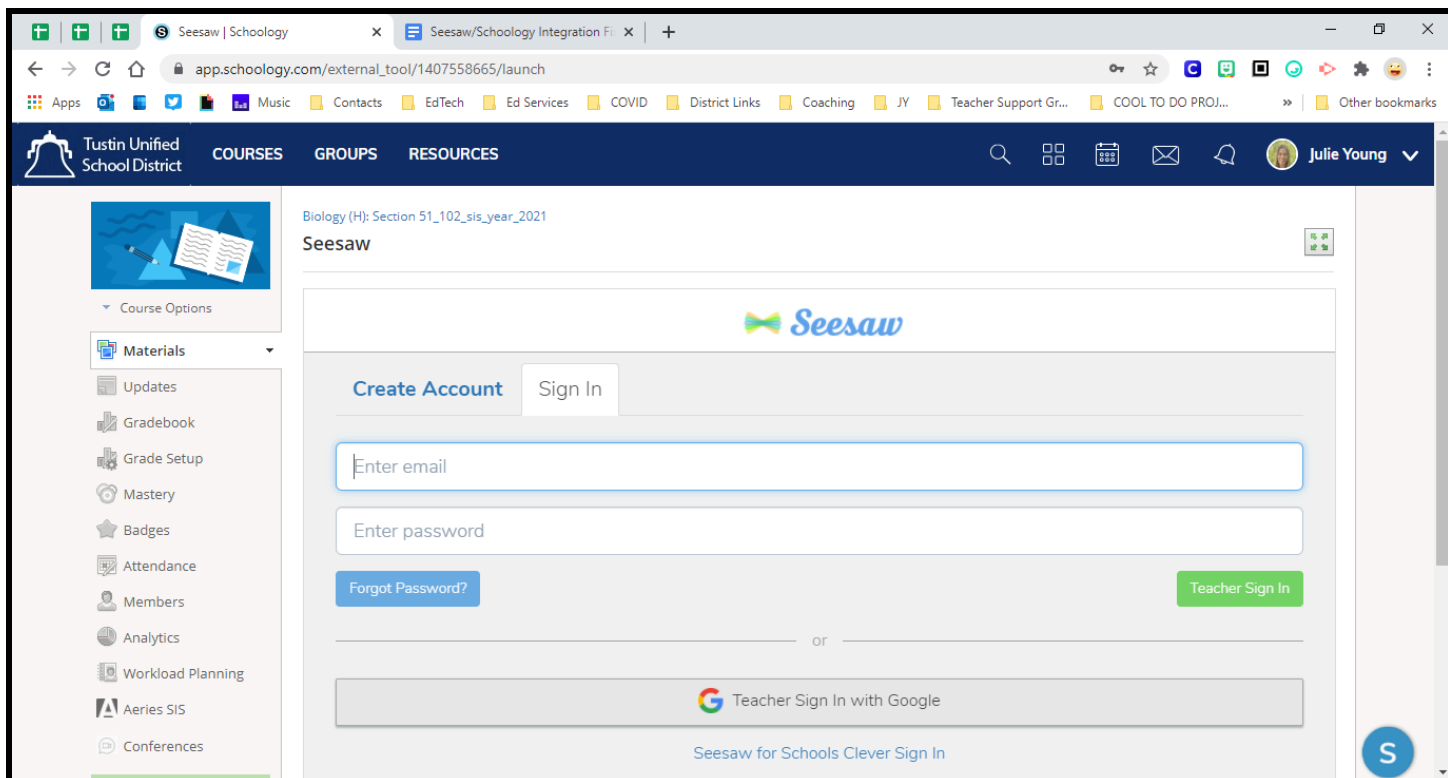


I'm a Teacher

I'm a Student

I'm a Family Member

I'm a Seesaw for Schools Administrator



Seesaw | Schoology

Seesaw/Schoology Integration F...

app.schoology.com/external_tool/1407558665/launch

Apps

Music

Contacts

EdTech

Ed Services

COVID

District Links

Coaching

JY

Teacher Support Gr...

COOL TO DO PROJ...

Other bookmarks

Tustin Unified School District

COURSES

GROUPS

RESOURCES

Julie Young

Course Options

Materials

Updates

Gradebook

Grade Setup

Mastery

Badges

Attendance

Members

Analytics

Workload Planning

Aeries SIS

Conferences

Access Code

4CMW-JPN4-CSVBR

Reset

Information

Grading period

Year: 2020-08-13 - 2021-05-

Biology (H): Section 51_102_sis_year_2021

Seesaw

Mrs. Young

Teacher - 1 Class

Journal

Using Seesaw For Home Learning?

Get Home Learning Codes

Explore Seesaw's Tools

Discover how Seesaw unlocks creative thinking across subjects.

See How Seesaw Em

Demonstrate

Journal

Activities

Inbox

Skills