

Easy Scallop Edge Knitting Pattern  
By ratcha from [to-knit-knitting-stitches.com](http://to-knit-knitting-stitches.com)



## Directions

Cast on multiple of 11 sts plus 1

Row 1: k1, \*yo, k3, k2tog, skp, k3, yo, k1; repeat from \* to the end of the row.

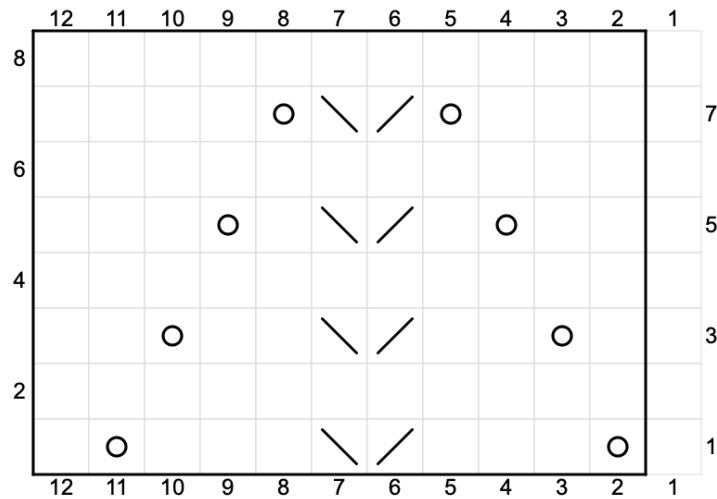
Rows 2, 4, 6 and 8: Purl.

Row 3: k1, \*k1, yo, k2, k2tog, skp, k2, yo, k2; repeat from \* to the end of the row.

Row 5: k1, \*k2, yo, k1, k2tog, skp, k1, yo, k3; repeat from \* to the end of the row.

Row 7: k1, k3, yo, k2tog, skp, yo, k4; repeat from \* to the end of the row.

Repeat rows 1 - 8 one more time to complete the scallop edging.



A Chart for Scallop Edging

## Knitting symbols

Blank square = knit on the right side and purl on the wrong side

/ = knit 2 together

\ = SKP (slip, knit, pass over or slip1, knit1, pass a slipped stitch over)

O = yarn over

A dark outline area is the area where you repeat.

Watch me knit on Youtube here;

<https://youtu.be/QYcQpvlkECw>