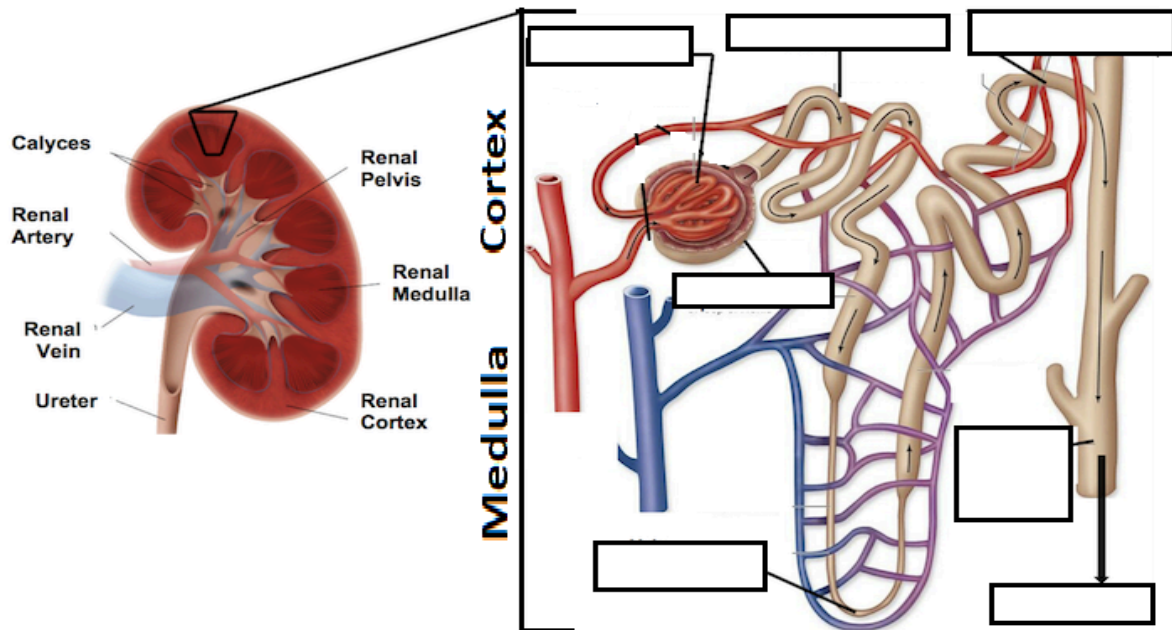


Names: \_\_\_\_\_

## Part B: The Nephron

- Let's take a closer look at a nephron. Watch these short videos on "[how a nephron works](#)" and this one on "[how your kidneys work](#)" Label the parts of the nephron below. (video hint: the first 3 minutes show what you need, then it just repeats the same information)



### Questions to Answer

- On the small diagram below, label the **afferent** and **efferent** blood vessels.
- In what portion of the kidney is the bowman's capsule found?
- What is the importance of removing material from the blood?
- What materials, after they have been removed from the blood, are then returned to the blood, and why is this important?
- Excess water and urea ultimately end up being sent where when it leaves the kidney?
- What type of gland, exocrine or endocrine, do kidneys function as when they produce urine? Explain.
- What type of epithelial tissue lines the tubules of the nephron?

