

SMART Ink 5 Information

SMART Ink is a part of the SMART Technologies Software Suite that is installed on your school desktop computer and works with your SMARTboard.

- ★ Note: SMART Ink does not work with a Qomo board. SMART Ink only works when the computer is **connected or plugged into a SMARTboard**.

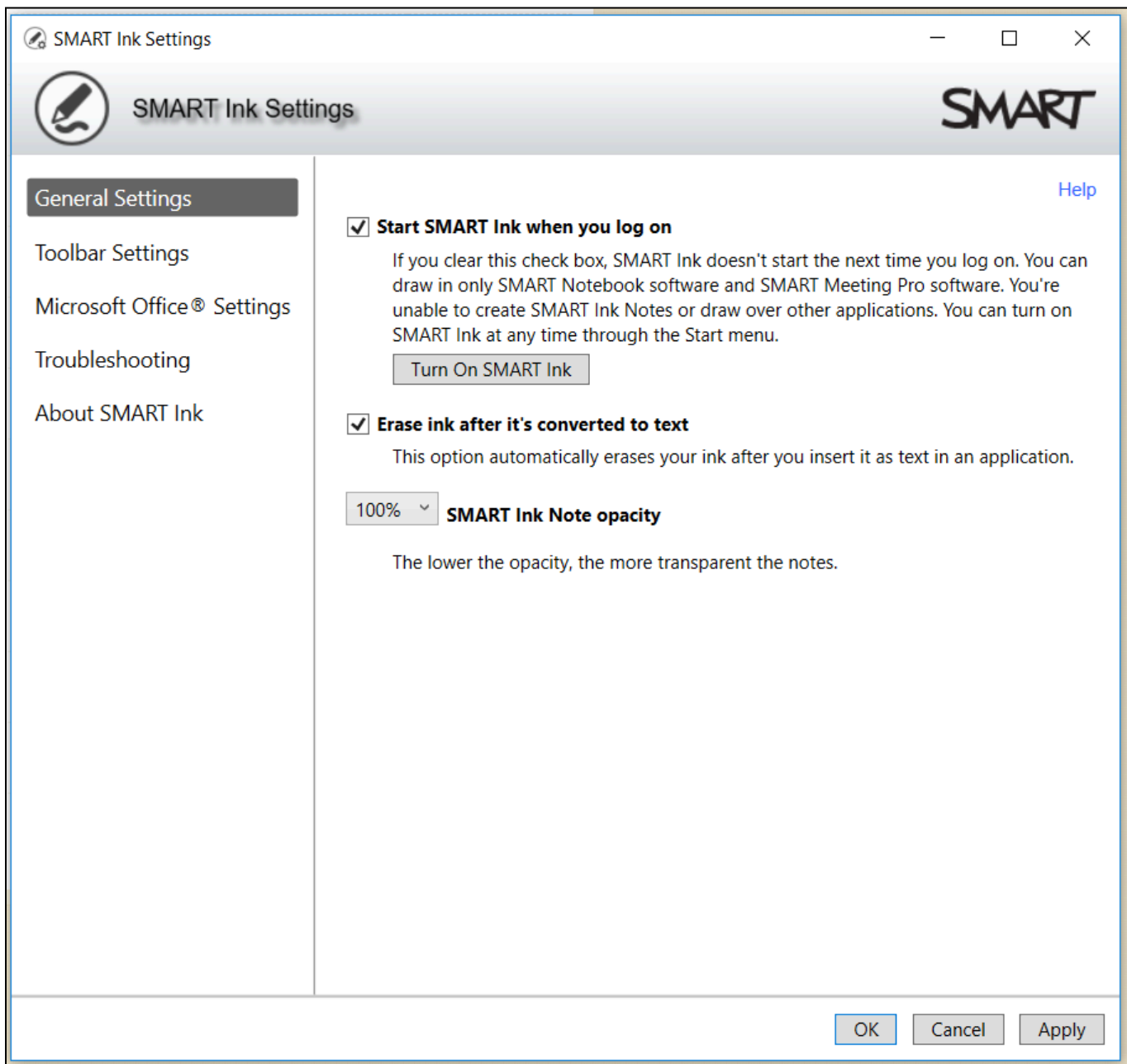


SMART Ink

Teachers can use SMART Ink to write and draw in digital ink over open applications, files, folders, websites, and any other open window on your computer.

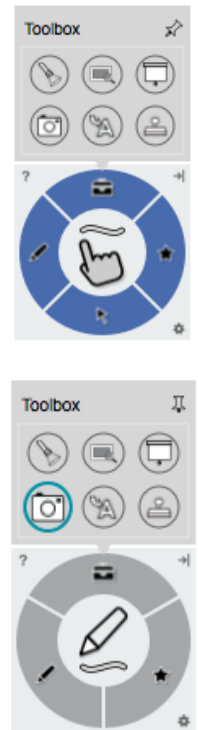
- When you write outside an open window, a SMART Ink Note appears, and you can write inside the note.
- When you minimize the application window, your SMART Ink will minimize along with the window.

To check your SMART Ink Settings, click the **Windows menu** and open the **SMART Technologies Folder**. Click the **SMART Ink Settings**. Check that your settings appear as the image below and press OK.



Notice that once SMART Ink is installed, you will see a small, floating circle that has a hand in it, or a pen in it (when a pen is picked up). You can click on this floating circle to quickly access SMART tools.

- Click the floating tool to expand it. Then rotate to the the tool you'd like to use.
 - Rotate to the **cursor** to use the touching capabilities of your board.
 - Rotate to the **pen** to change the color and thickness of the pen.
 - Rotate to the **star** to add your favorite tools. Add pen colors, stamps, and other smart tools like the magic pen or a shape that you use often.
 - Rotate to the **toolbox** to access the presenting tools, which include the spotlight, magnifier, screen shade, the screen capture tool, convert ink-to-text tool, and the stamp pad.
- Touch and slide the moving toolbars to different locations on the screen based on your preferences for easy access.



Use the **screen capture tool** to save the content that you've written on the SMARTboard.

- Rotate to the **toolbox**, then click the **screen capture tool**.
- Choose how you'd like to capture the content.

- | | |
|--|-----------------------------|
| | Capture a rectangular area. |
| | Capture a window. |
| | Capture an entire screen. |
| | Capture a freehand area. |

- ★ Most users chose the first option and then diagonally drag a box around the selected area.
- Upon capturing the area, you can decide to save the image to a SMART Notebook page or save it to the computer.

- To learn more about how to use SMART Ink, and the SMART Ink Document Viewer for writing on PDFs, [click here to view additional information.](#)
- Email Courtney.Kalbach@redclay.k12.de.us or Karen.Ammann@redclay.k12.de.us for help.