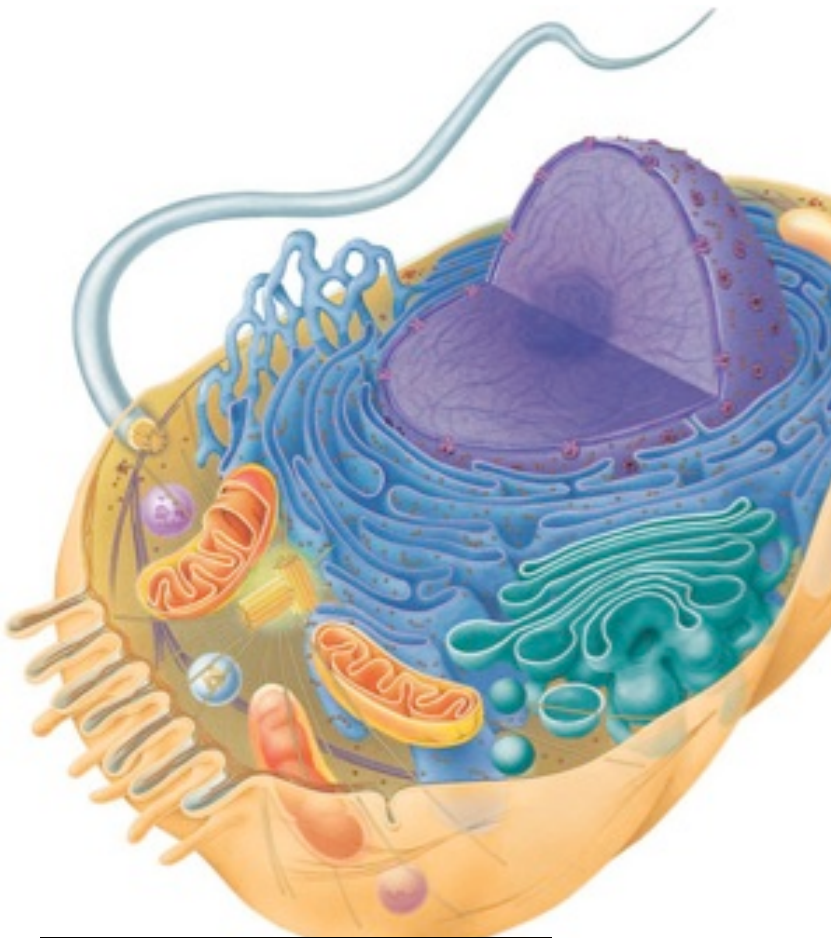


Biology: Unit IV- Cells
Animal Vs Plant Cell Coloring

Name: _____

Date: _____ Per: _____

_____ - whip-like structure used for movement



_____ - control center; contains DNA in the form of chromatin or chromosomes

_____ - makes ribosomes

_____ - made of phospholipids and proteins; controls what enters and leaves the cell

_____ - transports materials within the cell

_____ - packages and secretes materials

_____ - makes cellular energy (ATP) from sugar

_____ - stores food and water; larger in plant cells

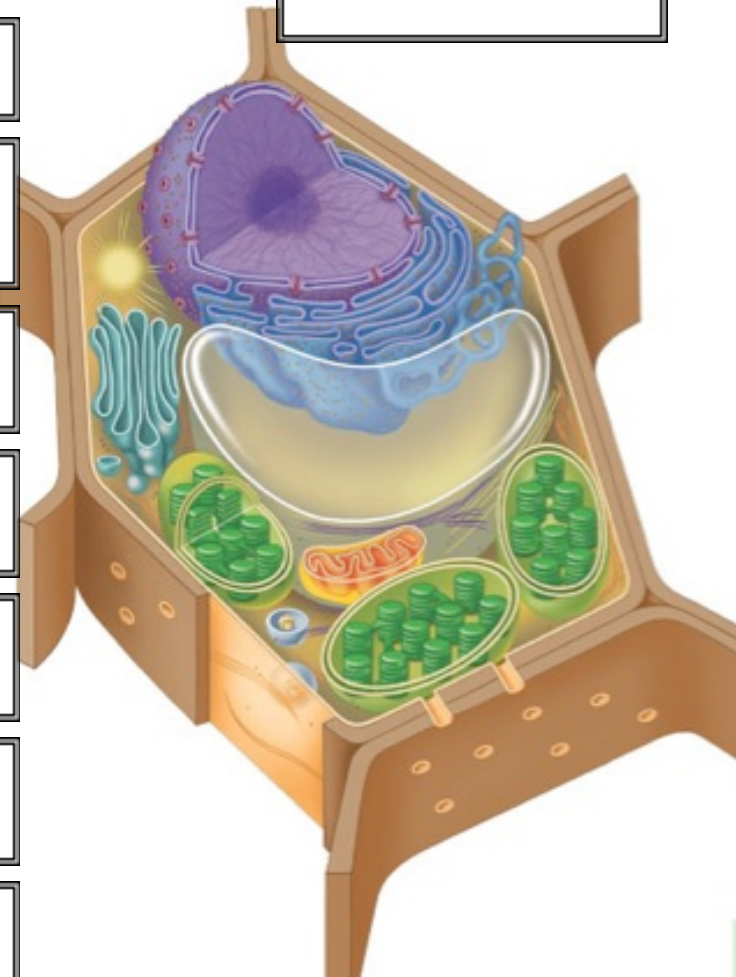
_____ - makes proteins (dots)

_____ - contains enzymes that digests or breaks down cellular wastes

_____ - short hair-like structures used for movement

_____ - only in animal cells; helps in cell division

_____ - only in plant cells; support and protection



_____ - only in plant cells; does photosynthesis which makes sugar from light energy